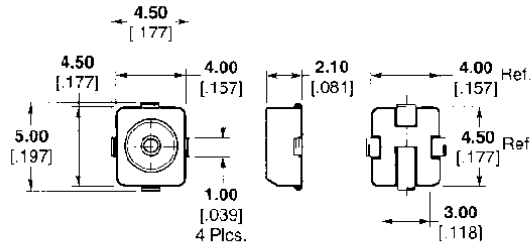


OSMT Surface Mount Coaxial Connectors (Continued)

Straight SMT PCB Mount Plug Receptacles

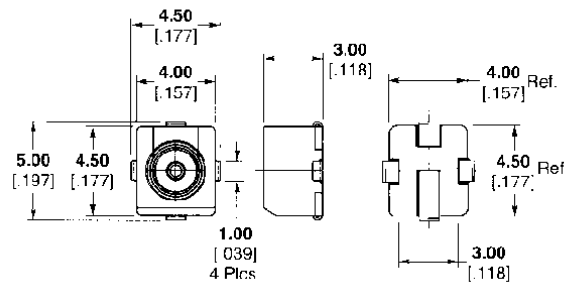
Multi-directional cable entry. 360° rotation. Recommended for use in passive cable applications or with supplementary cable tie-downs.



Packaging	Quantity	M/A-COM Model No.	Part No.
Bulk	Customer Specified	2367-0000-54	1251802-1
178 7.0 Dia. Taping	800 pcs/reel	2367-5001-54	1083946-1
330 13.3 Dia. Taping	3000 pcs/reel	2367-5002-54	1055689-1

Note: Requires part number 1221286-1 Engagement/Disengagement Tool.

Slotted single direction cable entry. Recommended for use in applications where bending forces may be applied to the cable.



Packaging	Quantity	M/A-COM Model No.	Part No.
Bulk	Customer Specified	2367-5006-54	1055690-1
178 7.0 Dia. Taping	600 pcs/reel	2367-5015-54	1254242-1
330 13.3 Dia. Taping	2500 pcs/reel	2367-5016-54	1055692-1

Note: Requires part number 1055886-1 Disengagement Tool. Engagement requires no tooling.