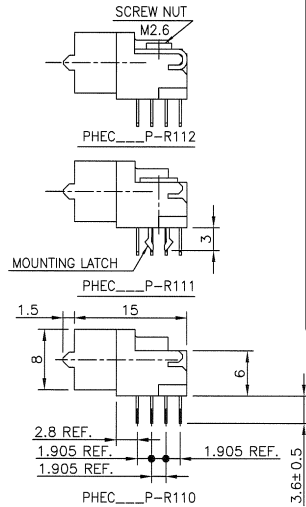
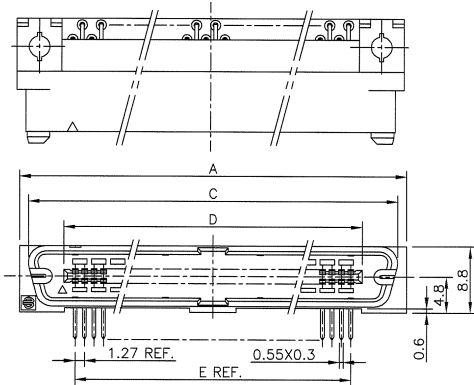
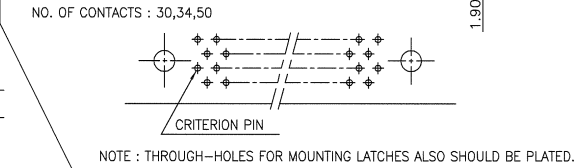
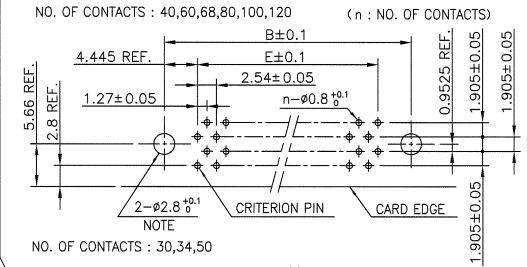


PRODUCT NO.

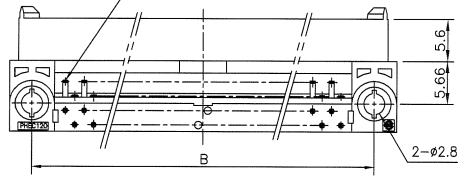
JSC 96358



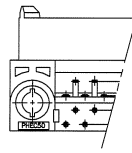
RECOMMENDED PC BOARD  
THICKNESS : 1.6 ± 0.2  
HOLE PATTERN (COMPONENT SIDE)



NO. OF CONTACTS : 40,60,68,80,100,120  
CRITERION PIN



NO. OF CONTACTS : 30,34,50



NOTES

1. BODY MATERIAL : NYLON GLASS FILLED (UL94V-0), COLOR BLACK
2. TERMINAL MATERIAL : PHOSPHOR BRONZE
3. MOUNTING LATCH MATERIAL : PHOSPHOR BRONZE
4. LOCATOR MATERIAL : PBT GLASS FILLED
5. SCREW NUT : STEEL
6. TERMINAL FINISH  
CONTACT AREA : GOLD FLASH 0.1 μm min. OVER NICKEL UNDERLAYER  
SOLDER TAILS : PURE Sn 2 μm min. OVER NICKEL UNDERLAYER
7. MOUNTING LATCH FINISH : PURE Sn 2 μm min. OVER NICKEL UNDERLAYER
8. SCREW FINISH : NICKEL
9. THIS PRODUCT MEETS EUROPEAN UNION DIRECTIVES AND OTHER COUNTRY REGULATIONS AS DESCRIBED IN GS-22-008
10. THE HOUSING WILL WITHSTAND EXPOSURE TO 260 DEGREE PEAK TEMPERATURE FOR 10 SECONDS IN A WAVE SOLDER APPLICATION WITH A 1.6mm MINIMUM THICK CIRCUIT BOARD.

CAT. NO.	NO. OF CONTACTS (MATING SIDE)	DIMENSIONS				
		A	B	C	D	E
PHEC30P-R11_LF	15/ROW X 2 ROWS	32.67	26.67	30.30	20.42	17.78
PHEC34P-R11_LF	17/ROW X 2 ROWS	35.21	29.21	32.84	22.96	20.32
PHEC40P-R11_LF	20/ROW X 2 ROWS	39.02	33.02	36.65	26.77	24.13
PHEC50P-R11_LF	25/ROW X 2 ROWS	45.37	39.37	43.00	33.12	30.48
PHEC60P-R11_LF	30/ROW X 2 ROWS	51.72	45.72	49.35	39.47	36.83
PHEC68P-R11_LF	34/ROW X 2 ROWS	56.80	50.80	54.43	44.55	41.91
PHEC80P-R11_LF	40/ROW X 2 ROWS	64.42	58.42	62.05	52.17	49.53
PHEC100P-R11_LF	50/ROW X 2 ROWS	77.12	71.12	74.75	64.87	62.23
PHEC120P-R11_LF	60/ROW X 2 ROWS	89.82	83.82	87.45	77.57	74.93

ltr	description	ecr no	dr	date	surface ISO 1302	tolerance ISO 406 ISO 1101	projection MM scale N/A	product family PHEC	CODE JP
A	RELEASED	J05-0186	S.O	3/29/05	tolerances unless otherwise specified	0.X ±0.3	MM	title PRINTED CIRCUIT CONNECTOR (CAT.NO.PHEC ___ P-R11_LF)	
B	REVISED	J07-0047	S.O	1/25/07	angles	0.XX ±0.3		dwg no JSC 96358	sheet 1 of 1 size A3
C	REVISED	J07-0458	S.O	9/11/07	0'±2'	0.XXX ±0.3		type Customer Drawing	Rev. C
					dr S.OKUDAIRA 3/29/05				
					enrg S.OKUDAIRA 9/11/07				
					chr R. Arif 7/11/07				
					app J. Madan 9/11/07				
sheet index	revision sheet	C							