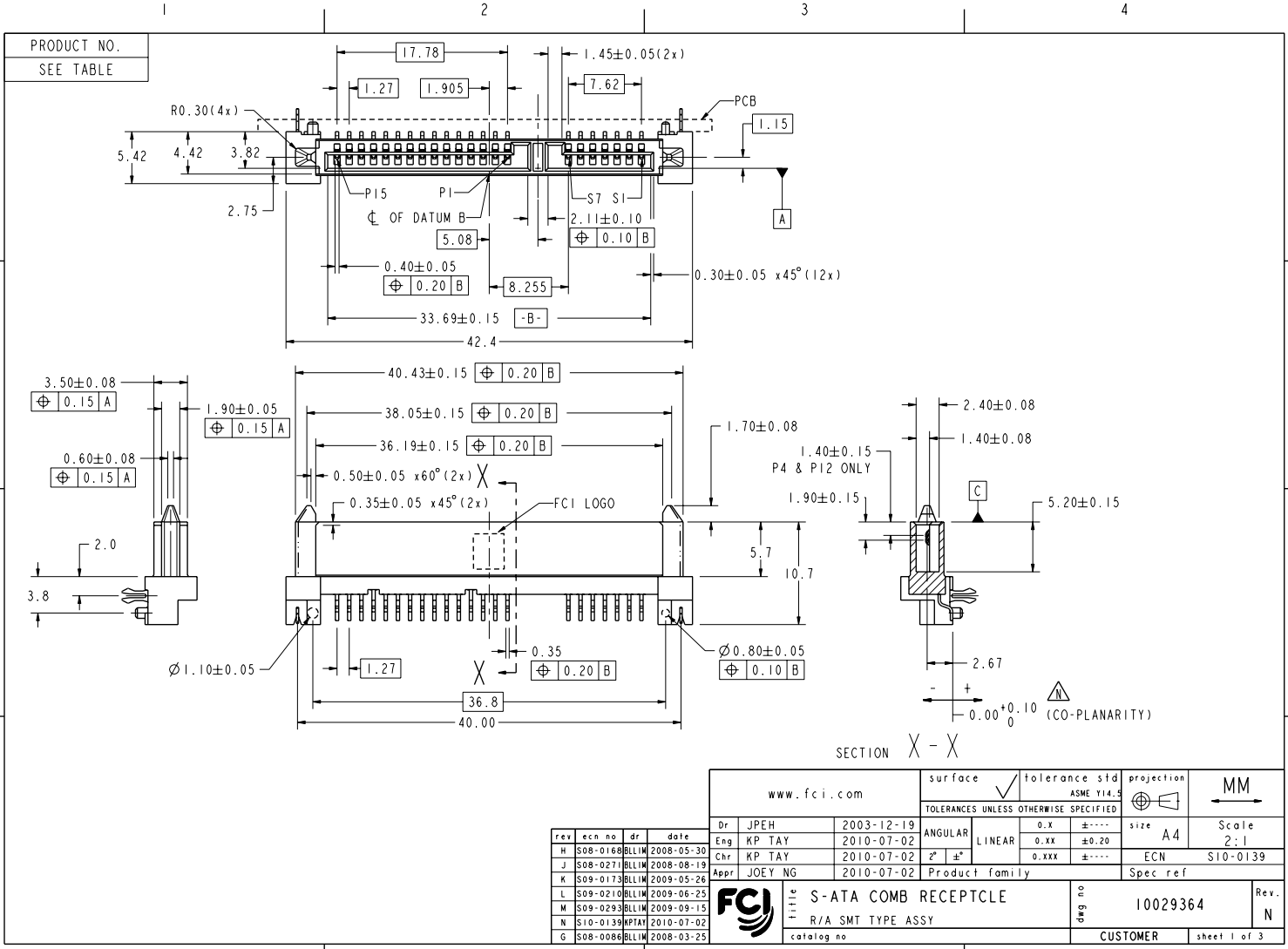




Copyright FCI.

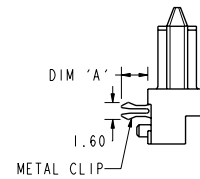
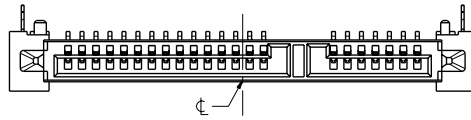


REV E - 2004-03-28

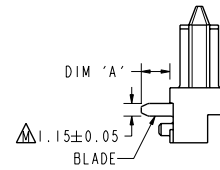
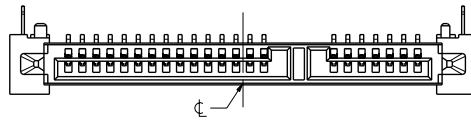
PDM: Rev:N STATUS:Released 4 Printed: Nov 30, 2010

PRODUCT NO.	RECOMMENDED P.C.B. THICKNESS	HOLD DOWN	DIM 'A'	HOUSING WITH STAND-OFF RIBS	PACKAGING
I0029364-001LF	1.60	METAL CLIP	2.40	NO	TRAY
I0029364-001TRLF					TAPE & REEL
I0029364-002LF	1.00		1.80	NO	TRAY
I0029364-002TRLF					TAPE & REEL
I0029364-011LF	-	BLADE	2.60	NO	TRAY
I0029364-011TRLF					TAPE & REEL
I0029364-111LF	-		2.60	YES	TRAY
I0029364-111TRLF					TAPE & REEL

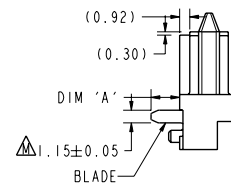
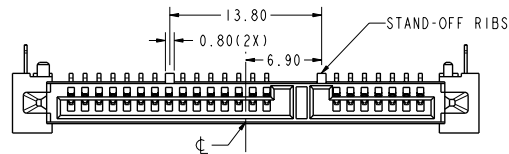
I0029364-00XLF/TRLF



I0029364-01XLF/TRLF



I0029364-11XLF/TRLF

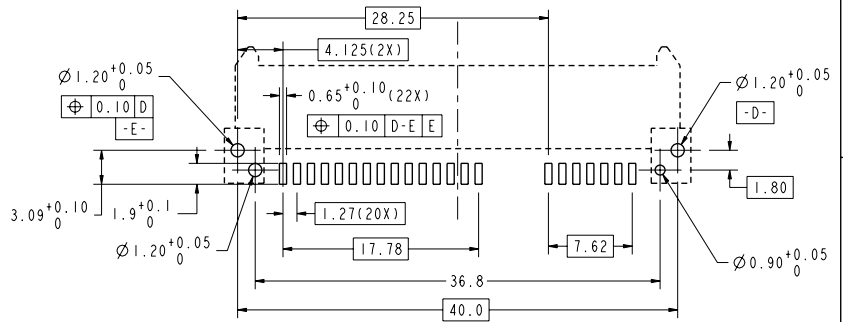


FCJ	title	S-ATA COMB RECEPTCLE	dwg no	I0029364	Rev.	N
	catalog no	R/A SMT TYPE ASSY	CUSTOMER	sheet 2 of 3		

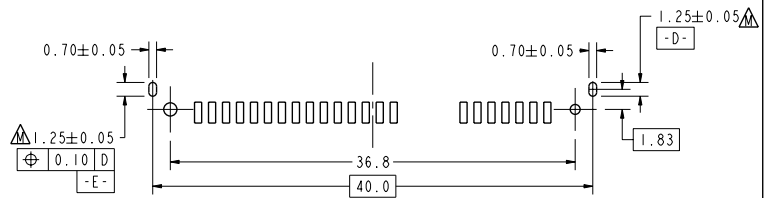
REV E - 2004-03-28

PDM: Rev:N STATUS:Released 4 Printed: Nov 30, 2010

Copyright FCJ.



RECOMMENDED P.C.B. LAYOUT
TOLERANCE UNLESS OTHERWISE ± 0.10



ALTERNATIVE P.C.B. LAYOUT
REFER TO RECOMMENDED PCB LAYOUT FOR UNSPECIFIED DIMENSIONS
TOLERANCE UNLESS OTHERWISE ± 0.10

NOTES: -

1. MATERIAL:
 - 1) HOUSING : HIGH TEMP. THERMOPLASTIC, UL 94V-0
COLOR : BLACK
 - 2) TERMINAL : COPPER ALLOY
 - 3) HOLD DOWN : COPPER ALLOY
2. FINISH:
 - 1) TERMINAL : 30u" GOLD PLATING (CONTACT POINT)
OVER 50u" MIN NICKEL
 - 2) SOLDER TAIL : 100u" MIN TIN OVER 50u" NICKEL
 - 3) HOLD DOWN : 100u" MIN TIN OVER 50u" NICKEL
3. TRUE POSITION APPLY AT TERMINAL TIP
4. THE STANDARD PACKAGING IS IN TRAY.
5. THE HOUSING WILL WITHSTAND EXPOSURE TO 260°C PEAK TEMPERATURE FOR 10 SECONDS IN A CONVECTION, INFRA-RED OR VAPOR PHASE REFLOW OVEN
6. THIS PRODUCT MEETS EUROPEAN UNION DIRECTIVES AND OTHER COUNTRY REGULATIONS AS DESCRIBED IN GS-22-008
7. PART NUMBERS ENDING IN "LF" ARE MEANT FOR LEAD-FREE IDENTIFICATION. P/N XXXXXXXX-XXXLF IS EQUIVALENT TO PREVIOUS P/N XXXXXXXX-XXX
8. A Δ SYMBOL WILL BE NEXT TO ANY DIMENSION, VIEW, OR NOTE WHICH HAS BEEN MODIFIED WITH THE CURRENT DRAWING REVISION.

REV E - 2004-03-28

FCJ	title	S-ATA COMB RECEPTCLE	dwg no	10029364	Rev.	N
	catalog no	R/A SMT TYPE ASSY	CUSTOMER	sheet 3 of 3		