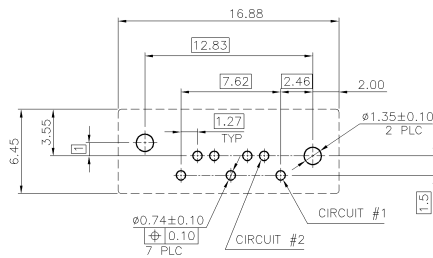


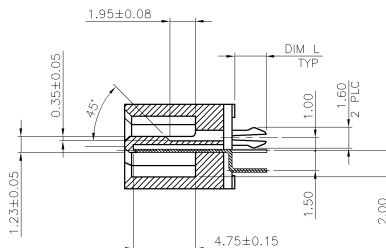
NOTES:

1. MATERIAL:
HOUSING: PA6T UL 94V-0, COLOR: (SEE TABLE)
CONTACT: BRASS.
PEG: BRASS.
2. FINISH:
CONTACT: GOLD (SEE TABLE) PLATING ON CONTACT AREA 100μ" MIN. MATTE-TIN PLATING ON SOLDERTAILS 50μ" MIN. NICKEL UNDERPLATING OVER ALL.
PEG: 100μ" MIN. TIN PLATING ON SOLDERTAILS 50μ" MIN. NICKEL UNDERPLATING OVER ALL.
3. WAVE SOLDER CAPABLE TO 265°C AS PER TE SPEC. 109-202, CONDITION B.
4. NO DATE CODE ON THE PRODUCT.

C	ADD/REVISED DIM	ECR-09-001599	AW/SC	22JAN 2009
B	ADD PART NUMBERS	ECR-08-028152	AW/SC	16OCT 2008
LTR	REVISION RECORD	ECN	DWN/CHK	DATE



(THICKNESS: 1.2, TOLERANCE: ±0.05)
RECOMMENDED PCB LAYOUT



SECTION C-C

2.05	DARK BLUE (293C)	G/F	4-1775058-4
	WHITE (COOL GRAY 1C)	G/F	4-1775058-3
	BLACK	G/F	4-1775058-2
DIM L	HOUSING COLOR	MIN. GOLD THICKNESS	PART NUMBER

TOLERANCES UNLESS OTHERWISE SPECIFIED:

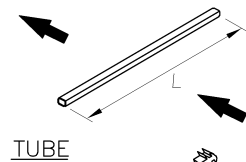
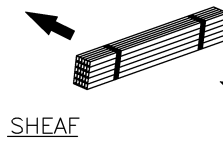
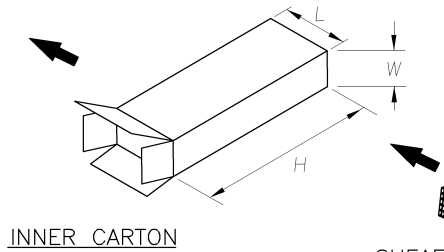
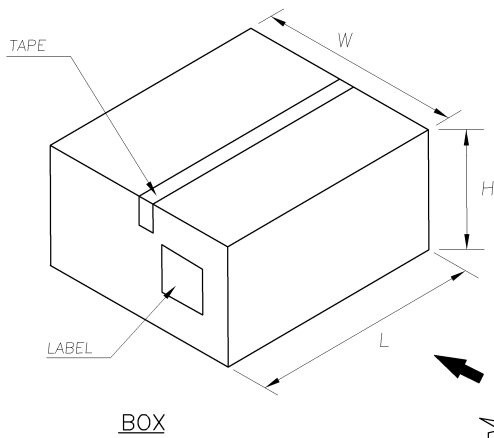
0 PLG	±
1 PLG	±0.3
2 PLG	±0.25
3 PLG	±0.2
ANGLES	±3°

MATERIAL: SEE NOTE

FINISH: SEE NOTE

WEIGHT: 1 GRAM

3.30	YELLOW (1235C)	15μ"	4-1775058-1
		G/F	4-1775058-0
	LIGHT BLUE (284C)	15μ"	3-1775058-9
		G/F	3-1775058-8
2.05	WHITE (7506U)	15μ"	3-1775058-7
		G/F	3-1775058-6
	RED (208C)	30μ"	3-1775058-5
		15μ"	3-1775058-4
3.30	GREEN (339C)	G/F	3-1775058-3
		15μ"	3-1775058-2
	DARKEST BLUE (661C)	G/F	3-1775058-1
		15μ"	3-1775058-0
	BLACK	30μ"	2-1775058-9
		15μ"	2-1775058-8
		G/F	2-1775058-7
		15μ"	2-1775058-6
2.40	GRAY (422U)	G/F	2-1775058-5
		15μ"	2-1775058-4
	DARKEST BLUE (661C)	G/F	2-1775058-3
		15μ"	2-1775058-2
		G/F	2-1775058-1
		15μ"	2-1775058-0
	ORANGE (157C)	30μ"	1-1775058-9
		15μ"	1-1775058-8
	LIGHT BLUE (284C)	G/F	1-1775058-7
		15μ"	1-1775058-6
	DARK BLUE (293C)	G/F	1-1775058-5
		15μ"	1-1775058-4
	WHITE (COOL GRAY 1C)	G/F	1-1775058-3
		15μ"	1-1775058-2
	BLACK	G/F	1-1775058-1
		15μ"	1-1775058-0
DIM L	HOUSING COLOR	MIN. GOLD THICKNESS	PART NUMBER
TOLERANCES UNLESS OTHERWISE SPECIFIED: DWN A. WU 05-SEP-2008			
CHK S. CHIEN 05-SEP-2008			
APVD W. KODAMA 05-SEP-2008			
PRODUCT SPEC 108-57469			
QUALIFICATION TEST REPORT 501-57539			
WEIGHT 1 GRAM			
LOC DW	SIZE A3	DRAWING NO C-1775058	REV C
SCALE	---	SHEET	1 OF 2



NOTE:

1. DIMENSION:
TUBE: L= 473, W= 13.4, H= 8.1
INNER CARTON: L= 485, W= 72, H= 86
CARTON: L= 500, W= 187, H= 169
2. QUANTITY:
26 PCS/TUBE
45 TUBES/SHEAF
1 SHEAFS/INNER CARTON
4 INNER CARTONS/CARTON
4680 PCS/BOX
3. WEIGHT:
N/W: 4.68 KG
G/W: 6.68 KG

SEE SHEET 1.	ECN	DWN/CHK	DATE
LTR	REVISION RECORD		

TOLERANCES UNLESS OTHERWISE SPECIFIED:		DWN	A. WU 05-SEP-2008		Tyco Electronics Tyco Electronics Corporation Taipei, Taiwan	
0 PLC ±— 1 PLC ±— 2 PLC ±— 3 PLC ±— ANGLES ±—		CHK	S. CHIEN 05-SEP-2008		NAME	
MATERIAL		APVD	W. KODAMA 05-SEP-2008		SERIAL ATA CONNECTOR, 7 PIN, VERTICAL HEADER, B TYPE.	
—		PRODUCT SPEC	—			
FINISH		APPLICATION SPEC	—		LOC	SIZE
—		WEIGHT	—		DW	A ₃
					SCALE	C-1775058
					SHEET	
					2 OF 2	

CUSTOMER DRAWING