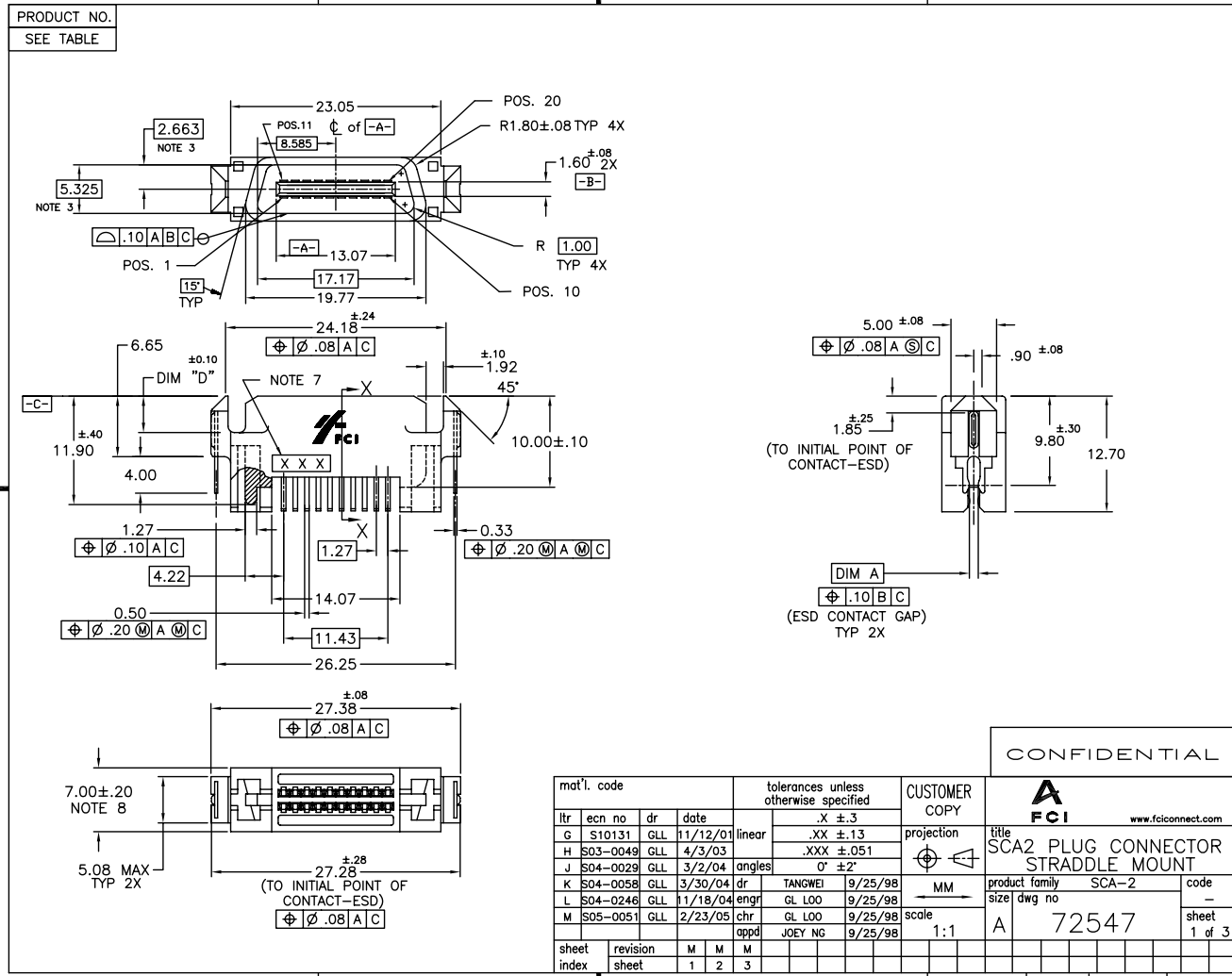


Tous droits strictement réservés. Reproduction ou communication à des tiers interdite sous quelque forme que ce soit sans autorisation écrite du propriétaire. Propriété de FCI. Droits de reproduction FCI.

All rights strictly reserved. Reproduction or issue to third parties in any form whatsoever is not permitted without written authority from the proprietor. Property of FCI. Copyright FCI.

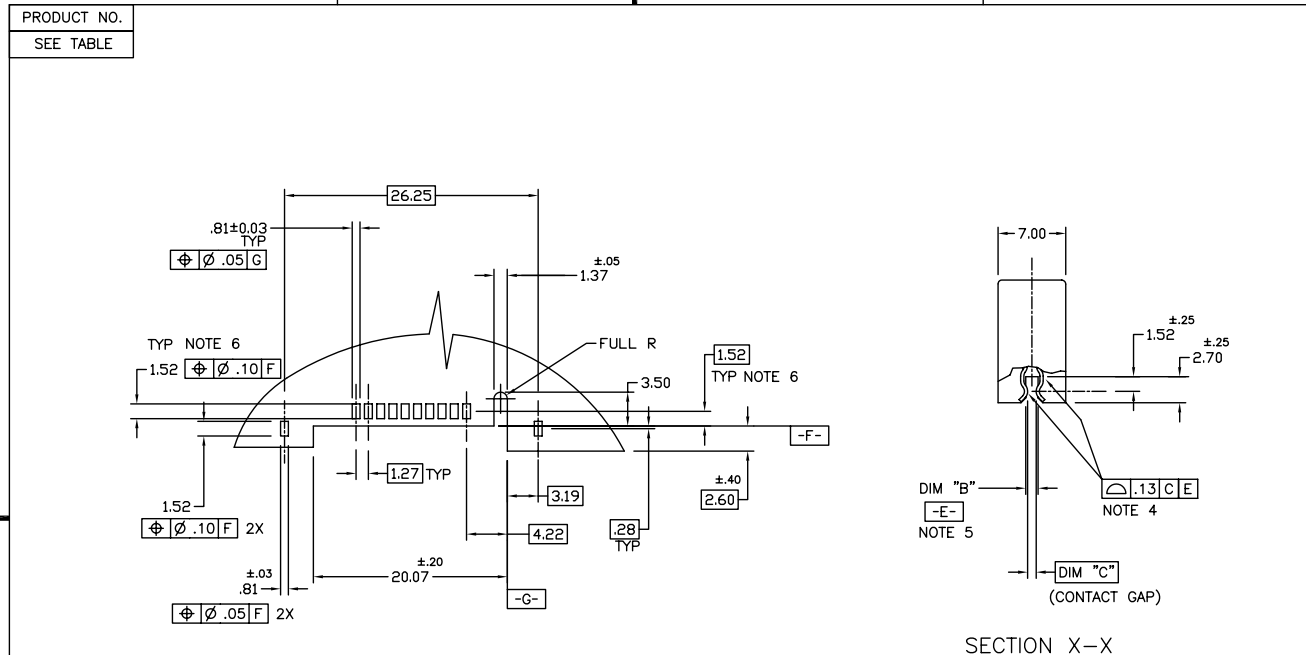


CONFIDENTIAL

mat'l. code				tolerances unless otherwise specified				CUSTOMER COPY		FCI www.fciconnect.com					
ltr	ecn no	dr	date	linear	.X ±.3	projection		title SCA2 PLUG CONNECTOR STRADDLE MOUNT		product family SCA-2 code -					
G	S10131	GLL	11/12/01		.XX ±.13							size dwg no		sheet 1 of 3	
H	S03-0049	GLL	4/3/03		.XXX ±.051										
J	S04-0029	GLL	3/2/04	angles	0° ±2°	MM	scale 1:1		product family SCA-2 code -						
K	S04-0058	GLL	3/30/04	dr	TANGWEI 9/25/98		size dwg no 72547		sheet 1 of 3						
L	S04-0246	GLL	11/18/04	engr	GL LOO 9/25/98										
M	S05-0051	GLL	2/23/05	chr	GL LOO 9/25/98										
				appd	JOEY NG 9/25/98	scale 1:1		product family SCA-2 code -							
sheet index	revision sheet	M	M	M											
		1	2	3											

Tous droits strictement réservés. Reproduction ou communication à des tiers interdite sous quelque forme que ce soit sans autorisation écrite du propriétaire. Property of FCI. All rights reserved. FCI.

All rights strictly reserved. Reproduction or issue to third parties in any form whatsoever is not permitted without written authority from the proprietor. Property of FCI. Copyright FCI.



RECOMMENDED PC BOARD MOUNTING DIMENSIONS

SECTION X-X

CONFIDENTIAL

mat'l. code				tolerances unless otherwise specified				CUSTOMER COPY		FCI www.fciconnect.com	
ltr	ecr	no	dr	date	linear	.X ±.3	projection		title		code
M						.XX ±.13	MM		SCA2 PLUG CONNECTOR STRADDLE MOUNT		-
					angles	.XXX ±.051	1:1		product family	SCA-2	
					dr	0° ±2°			size	dwg no	72547
					engr	TANGWEI 9/25/98					
					chr	GL LOO 9/25/98					
					appd	JOEY NG 9/25/98					
sheet index	revision sheet	1									

ACAD

PDM: Rev:M

cage code 22526

STATUS: Released

Feb 01, 2007

Tous droits strictement réservés. Reproduction ou communication à des tiers interdite sous quelque forme que ce soit sans autorisation écrite du propriétaire. Property of FCI. Copyright FCI.

All rights strictly reserved. Reproduction or issue to third parties in any form whatsoever is not permitted without written authority from the proprietor. Property of FCI. Copyright FCI.

PRODUCT NO.	NO. OF POS.	RECOMMENDED PCB THICKNESS	DIM. A	DIM. B	DIM. C	DIM. D	PLATING SPEC	PRODUCT NO.	PLATING SPEC	PRODUCT NO.	PLATING SPEC
72547-001	20	1.19	.970	1.32	0.88	4.00	NOTE 2	72547-001LF	NOTE 16	72547-201LF	NOTE 12
72547-002								72547-002LF		72547-202LF	
72547-003								72547-003LF		72547-203LF	
72547-103S								NOTE 10			
72547-004	20	1.57	1.520	1.83	1.44	4.00	NOTE 10	---		72547-204LF	
72547-004S											

NOTES:

- HOUSING : LCP, UL94V-0 RATED, COLOR: BLACK
CONTACTS: PHOSPHOR BRONZE
ESD CONTACT: PHOSPHOR BRONZE
- PLATING: CONTACT: 0,76µm (30µ") MIN GXT IN CONTACT AREA, 2.54µm (100µ") MIN TIN-LEAD ON P.C. BOARD LEG, 1.27µm (50µ") MIN. NICKEL UNDERPLATE OVER ENTIRE TERMINAL
ESD CONTACT: 2.54 µm (100µ") MIN TIN-LEAD PLATING WITH 1.27µm (50µ") MIN. NICKEL UNDERPLATE
- MEASURED AT THE FLOOR OF THE CAVITY MEASURED 6mm FROM DATUM $\square-Z$.
- APPLIES TO ALL SURFACES OF CONTACT TAILS
- MAXIMUM BOARD THICKNESS THAT CONNECTOR CAN ACCOMMODATE IS DEFINED BY "B" DIM.
- THESE DIMENSIONS RESULT IN THE CONTACT RESTING IN CENTER OF PAD WIDTH. THESE DIMENSIONS ARE SUBJECT TO CHANGE DEPENDING ON CUSTOMERS MANUFACTURING PREFERENCES IN PROCESS, SOLDER PLACEMENT AND REFLOW.
- DATE CODE IN THIS AREA.
- MEASUREMENT MADE AT THE CENTER OF PART MAY BE AS LOW AS 6.55. DESIGN TO BE MADE TO ACHIEVE THE NOMINAL DIMENSION ACROSS THE ENTIRE PART.
- DISTANCE MEASURED ACROSS CONTACT MATING SURFACES ALONG EFFECTIVE MATING AREA AND CONTACT MUST BE ABOVE PLASTIC ALONG EFFECTIVE MATING AREA.
- PLATING: CONTACT: 0,76µm (30µ") MIN GOLD IN CONTACT AREA, 2.54µm (100µ") MIN TIN-LEAD ON P.C. BOARD LEG, 1.27µm (50µ") MIN. NICKEL UNDERPLATE OVER ENTIRE TERMINAL
ESD CONTACT: 2.54 µm (100µ") MIN TIN-LEAD PLATING WITH 1.27µm (50µ") MIN. NICKEL UNDERPLATE
- PART NUMBERS ENDING IN -0xx or -0xxS or -1xxS ARE MANUFACTURED WITH BRIGHT FINISH TIN-LEAD PLATING IN P.C. BOARD LEG AREA.
- PLATING: CONTACT: 0,76µm (30µ") MIN GOLD IN CONTACT AREA, 2.54µm (100µ") - 5.08µm (200µ") TIN ON P.C. BOARD LEG, 1.27µm (50µ") MIN. NICKEL UNDERPLATE OVER ENTIRE TERMINAL
ESD CONTACT: 2.54 µm (100µ") - 5.08µm (200µ") TIN PLATING WITH 1.27µm (50µ") NICKEL UNDERPLATE
- THE HOUSING WILL WITHSTAND EXPOSURE TO 260° C PEAK TEMPERATURE FOR 10 SECONDS IN A CONVECTION, INFRA-RED OR VAPOR PHASE REFLOW OVEN.
- THIS PRODUCT MEETS EUROPEAN UNION DIRECTIVES AND OTHER COUNTRY REGULATIONS AS DESCRIBED IN GS-22-008.
- PART NUMBERS ENDING IN "LF" MEANS FOR NOTE 14 LEAD FREE IDENTIFICATION. P/N XXXXX-2XXLF IS EQUIVALENT TO PREVIOUS P/N XXXXX-2XX .
- PLATING: CONTACT: 0,76µm (30µ") MIN GXT IN CONTACT AREA, 2.54µm (100µ") - 5.08µm (200µ") TIN ON P.C. BOARD LEG, 1.27µm (50µ") MIN. NICKEL UNDERPLATE OVER ENTIRE TERMINAL
ESD CONTACT: 2.54 µm (100µ") - 5.08µm (200µ") TIN PLATING WITH 1.27µm (50µ") NICKEL UNDERPLATE

CONFIDENTIAL

mat'l. code				tolerances unless otherwise specified				CUSTOMER COPY		FCI www.fciconnect.com	
ltr	ecn no	dr	date	linear	.X ±.3	projection	title		product family		code
M				angles	.XX ±.13		SCA2 PLUG CONNECTOR STRADDLE MOUNT		SCA-2		-
				dr	.XXX ±.051	MM	size		dwg no		sheet
				engr	0' ±2"	1:1	72547		3 of 3		
				chr	TANGWEI 9/25/98						
				appd	GL LOO 9/25/98						
sheet index	revision sheet	1			GL LOO 9/25/98						
					JOEY NG 9/25/98						