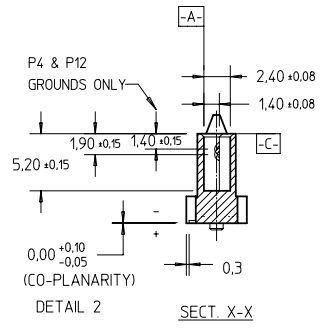
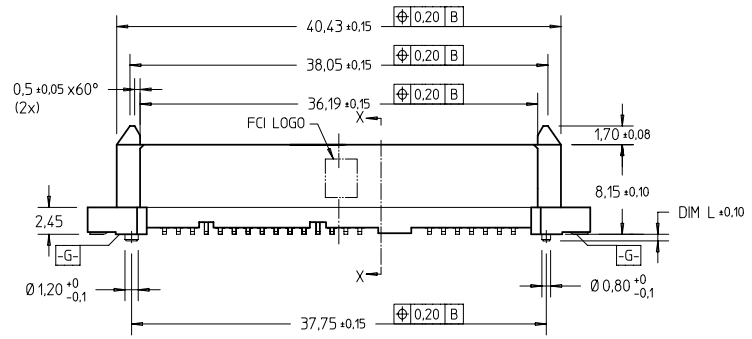
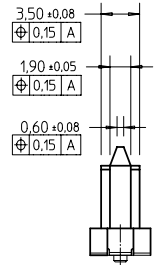
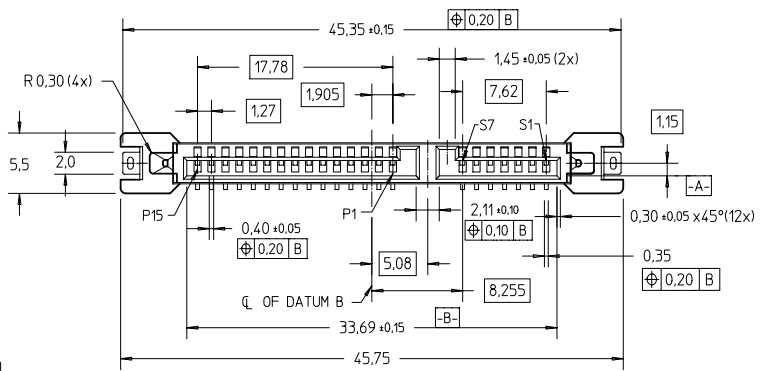


FCI CONFIDENTIAL



This document is the property of and embodies CONFIDENTIAL and PROPRIETARY information of FCI. No part of the information shown here may be disclosed, copied, or otherwise used in any way or for any purpose without the written consent of FCI. Copyright FCI.

PRODUCT NO  
SEE TABLE



mat'l. code		surface	tolerance	projection	product family
		ISO 1302	ISO 406 ISO 1101		S-ATA
itr	ec'n no	dr	date	title	
A	S06-0231	GLL	2006-07-06	S-ATA COMB RECP.	
tolerances unless otherwise specified				mm	VERTICAL SMT TYPE ASSY
B	S07-0079	GLL	2007-03-15	linear	= +0,20
C	S07-0268	GLL	2007-07-31	angles	± 2°
				scale	2 : 1
D	S09-0283	GLL	2009-09-09	dwg no	
				sheet 1 of 2 size	
				10042140	
				A4	
				type	
				CUSTOMER Drawing	
sheet	revision	D	0		
index	sheet	1	2		

PDM: Rev:D STATUS Released 10042140C rev D Printed: Apr 08, 2010

form A4

FCI CONFIDENTIAL

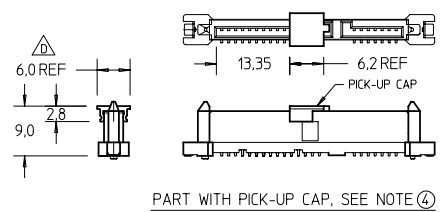
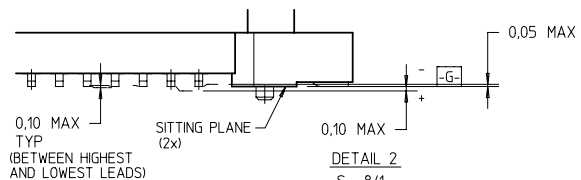
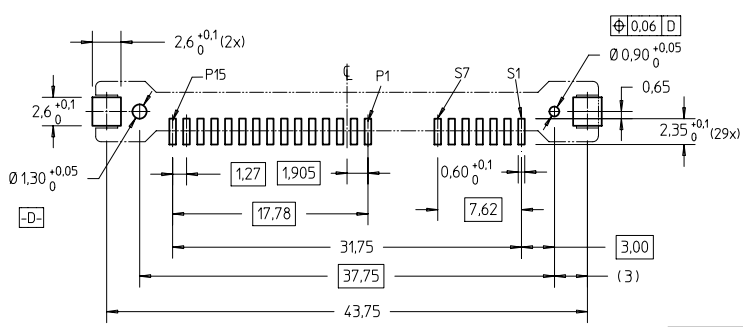


This document is the property of and embodies CONFIDENTIAL and PROPRIETARY information of FCI. No part of the information shown here may be reproduced, stored in a retrieval system, or transmitted in any form or by any means, electronic, mechanical, photocopying, recording, or by any information storage and retrieval system, without the written consent of FCI. Copyright FCI.

PRODUCT NO	DIM L	PICK-UP CAP	PACKAGING
10042140-001LF	0.60	NO	STD TRAY
10042140-001CLF		YES	STD TRAY
10042140-001C-TRLF		YES	TAPE & REEL
10042140-003LF	1.45	NO	STD TRAY
10042140-003CLF		YES	STD TRAY
10042140-003C-TRLF		YES	TAPE & REEL

PRODUCT NO	DIM L	PICK-UP CAP	PACKAGING
10042140-002LF	0.60	NO	CUSTOM-MADE
10042140-002CLF		YES	TRAY

- NOTES:**
- 1 THE UNMATING FORCE SHALL NOT BE LESS THAN 5N.
  - 2 MATERIAL:
    - 1) HOUSING : HIGH TEMP TERMOPLASTIC, UL 94V-0  
COLOR : BLACK
    - 2) TERMINAL : COPPER ALLOY
    - 3) HOLD DOWN : COPPER ALLOY
  - 3 FINISH :
    - 1) TERMINAL : 30u" Au PLATING (CONTACT POINT) OVER 50u" NICKEL
    - 2) SOLDER TAIL : 50u" min Sn OVER 50u" NICKEL
    - 3) HOLD DOWN : 50u" min Sn OVER 50u" NICKEL
  - ④ PART WITH PICK-UP CAP, P/N XXXXXXXX-XXXX LF
  - 5 THE STD PACKAGING IS IN TRAY.
  - ⑥ FOR TAPE & REEL PACKAGING, SUFFIX '-TR' ADDED  
P/N XXXXXXXX-XXXX-TR LF
  - 7 THE HOUSING WILL WITHSTAND EXPOSURE TO 260°C PEAK TEMPERATURE FOR 10 SECONDS IN A CONVECTION, INFRA-RED OR VAPOR PHASE REFLOW OVEN.
  - ⑧ THIS PRODUCT MEETS EUROPEAN UNION DIRECTIVES AND OTHER COUNTRY REGULATIONS AS DESCRIBED IN GS-22-008.
  - 9 PART NUMBERS ENDING IN 'LF' MEANS FOR NOTE 8 LEAD FREE IDENTIFICATION.
  - ⑩ A  $\Delta$  SYMBOL WILL BE NEXT TO ANY DIMENSION, VIEW, OR NOTE WHICH HAS BEEN MODIFIED WITH THE CURRENT DRAWING REVISION.



mat'l. code	surface ISO 1302	tolerance ISO 406 ISO 1101	projection	product family	S-ATA
tr	ecn no	dr	date	title	
D				S-ATA COMB RECP. VERTICAL SMT TYPE ASSY	
				dwg no	sheet 2 of 2 size
				10042140	A4
				type	CUSTOMER Drawing
sheet index	revision sheet	1			