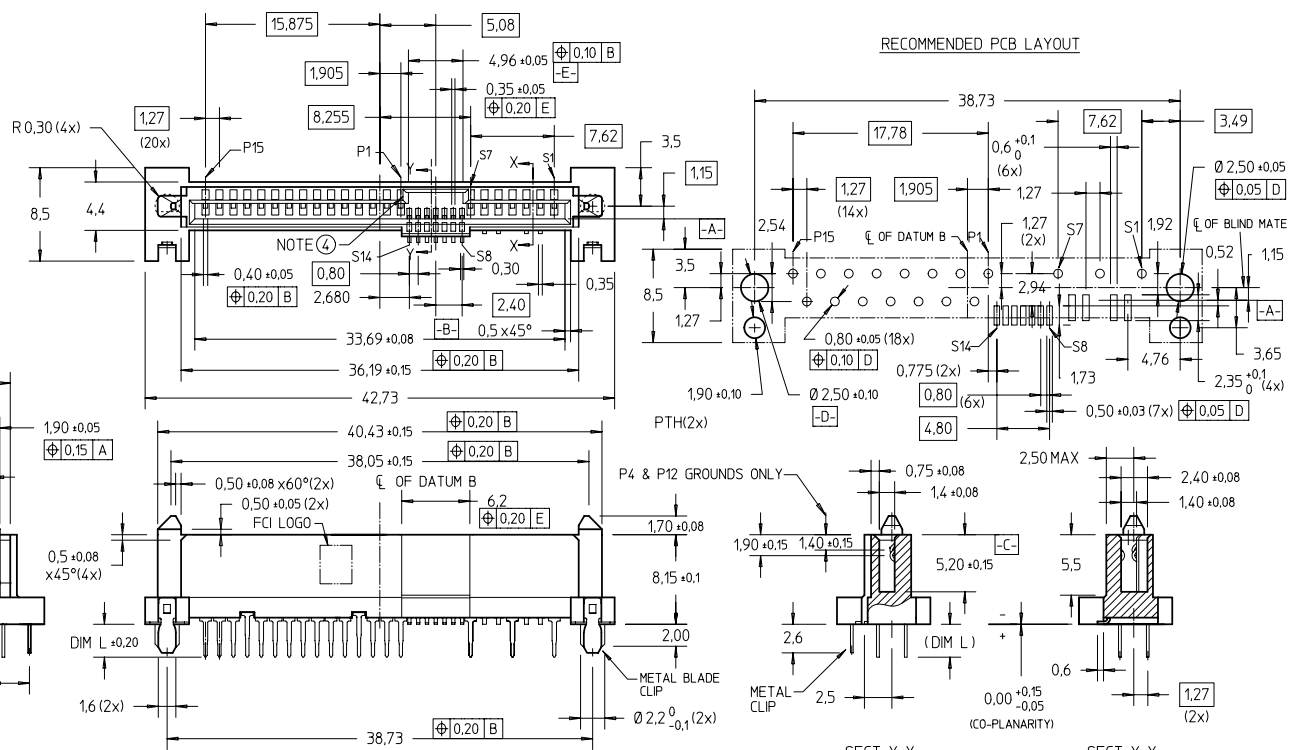


FCI CONFIDENTIAL

FCI
FCIconnect.com
This document is the property of and embodies CONFIDENTIAL and PROPRIETARY information of FCI. No part of the information shown herein may be reproduced, stored in a retrieval system, or used in any way or disclosed to others without the written consent of FCI.
Copyright FCI

PRODUCT NO
SEE TABLE



itr	ecm no	dr	date	surface	tolerance	projection	product family
A	S05-0065	QLL	2005-03-01	ISO 1302	ISO 406 ISO 1101	mm	SAS
B	S05-0086	QLL	2005-03-17	tolerances unless otherwise specified		mm	SAS RECEPTACLE WIDE BASE HYBRID TYPE ASSY
C	S05-0155	QLL	2005-05-30	angles	linear	mm	scale 2:1
D	S04-0263	QLL	2006-08-03	± 2°			dwg no 10036876 sheet 1 of 2 size A4
E	S07-0051	QLL	2007-02-14	engr	QL L00		10036876 sheet 1 of 2 size A4
F	S09-0051	QLL	2009-02-19	chr	QL L00		10036876 sheet 1 of 2 size A4
G	S10-0001	QLL	2010-01-06	appd	JOEY NS		10036876 sheet 1 of 2 size A4
sheet index	revision	G	G				type CUSTOMER Drawing
1	2						

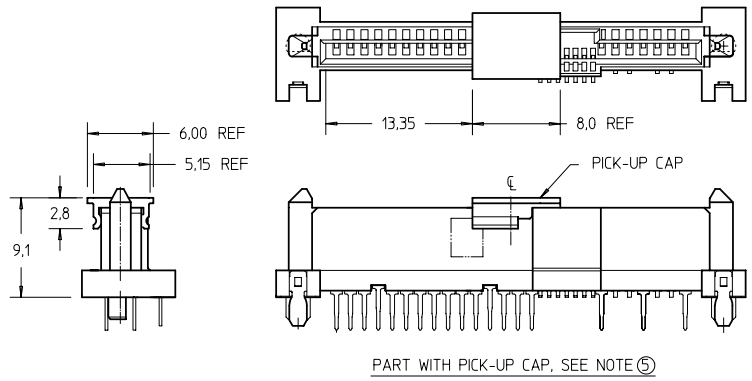
PDM: Rev:G STATUS:Released 10036876CRevG Printed: Jan 08, 2010

FCI CONFIDENTIAL

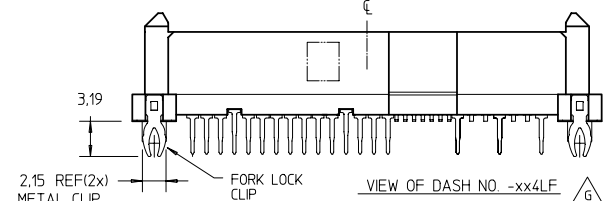
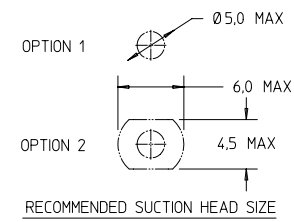
FCI
FCIconnect.com
This document is the property of and embodies CONFIDENTIAL and PROPRIETARY information of FCI. No part of the information shown on this drawing may be disclosed, copied, or otherwise used without the written consent of FCI.
Copyright FCI

PRODUCT NO	DIM L (SOLDER TAIL)	PICK-UP CAP	RECOMMENDED P.C. BOARD THICKNESS	TYPE OF CLIP	PACKAGING
10036876-003LF	2.70	NO	1,57mm (0,062") / 2,36mm (0,093")	METAL BLADE	TRAY
10036876-003CLF		YES			TAPE & REEL
10036876-003C-TRLF	3.70	YES	2,36mm (0,093")	METAL BLADE	TRAY
10036876-013LF		NO			TAPE & REEL
10036876-013CLF		YES			
10036876-013C-TRLF		YES			
10036876-004LF	2.70	NO	2,36mm (0,093")	FORK LOCK	TRAY
10036876-014LF	3.70	NO	2,36mm (0,093")	FORK LOCK	TRAY

- NOTES:
- ⑤ PART WITH PICK-UP CAP, P/N XXXXXXXX-XXXX LF
 - ⑥ THE STD PACKAGING IS IN TRAY
 - 7 FOR TAPE & REEL PACKAGING, SUFFIX "-TR" ADDED.
P/N XXXXXXXX-XXXX -TR LF
 - 8 THE HOUSING WILL WITHSTAND EXPOSURE TO 260°C PEAK TEMPERATURE FOR 10 SECONDS IN A CONVECTION, INFRA-RED OR VAPOR PHASE REFLOW OVEN.
 - ⑨ THIS PRODUCT MEETS EUROPEAN UNION DIRECTIVES AND OTHER COUNTRY REGULATIONS AS DESCRIBED IN GS-22-008.
 - ⑩ PART NUMBERS ENDING IN "LF" MEANS FOR NOTE 8 LEAD FREE IDENTIFICATION
 - ⑪ ~~XXXXXXXX-XXXX LF IS EQUIVALENT TO PREVIOUS P/N XXXXXXXX-XXXX~~
 - ⑪ ~~XXXXXXXX-XXXXCLF IS EQUIVALENT TO PREVIOUS P/N XXXXXXXX-XXXX~~
 - 11 A Δ SYMBOL WILL BE NEXT TO ANY DIMENSION, VIEW, OR NOTE WHICH HAS BEEN MODIFIED WITH THE CURRENT DRAWING REVISION.



PART WITH PICK-UP CAP, SEE NOTE ⑤



mat'l. code	surface ISO 1302	tolerance ISO 406 ISO 1101	projection	product family
ltr	ecn no	dr	date	SAS
G				title
				SAS RECEPTACLE WIDE BASE HYBRID TYPE ASSY
				dwg no
				10036876
				sheet 2 of 2 size
				A4
				type
				CUSTOMER Drawing
sheet index	revision	sheet	1	