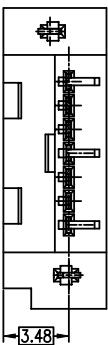
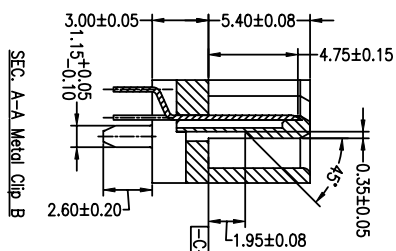
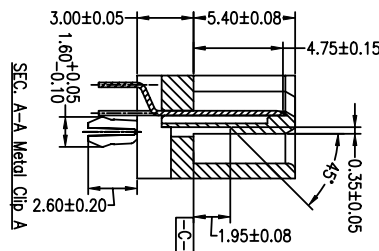
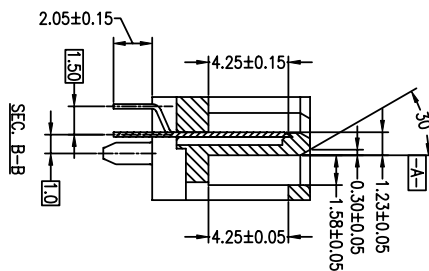
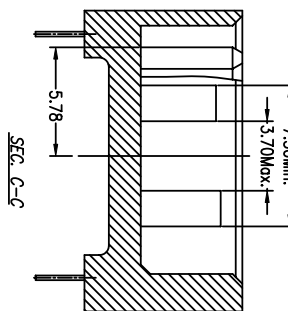
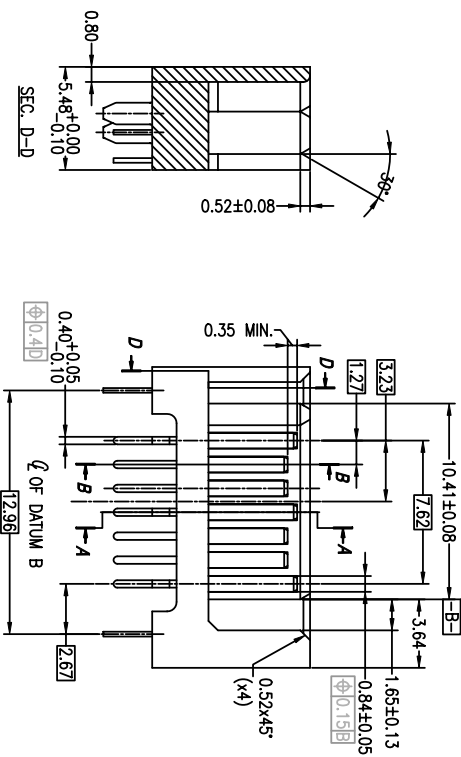
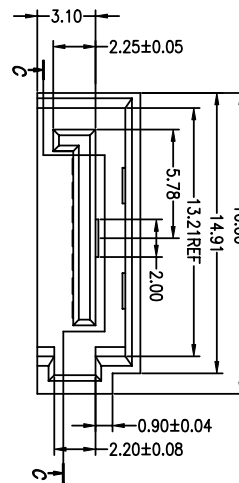




PRODUCT NO.10035690-XXX-3W

1 | 2



1 | 2

mat'l. code		tolerances unless otherwise specified		CUSTOMER COPY		FCI		title		code	
ltr	ecn no	dr	date	X ± 0.30		projection		S-ATA SIGNAL PLUG		www.fciconnect.com	
A	105-0213	W.L.	09/09/05	.XX ± 0.20		MM		DIP VERTICAL TYPE ASSY		code	
B	108-1033	S.Lin	02/29/08	.XXX ± 0.10		MM		product family		sheet	
				0° ± 2°		NA		SATA		1 of	
								size dng no		TWN	
								10035690		1 of	
sheet	revision	sheet	index					code code		4	
B	B	1	2	3							

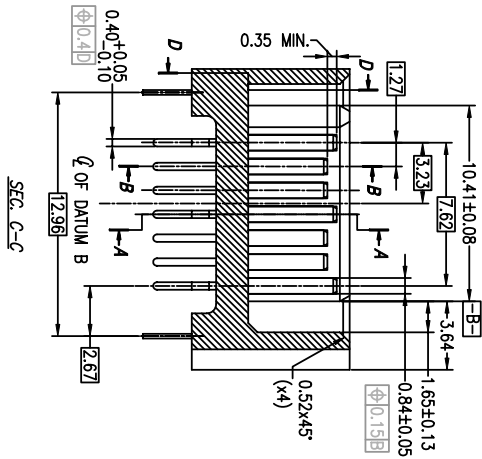
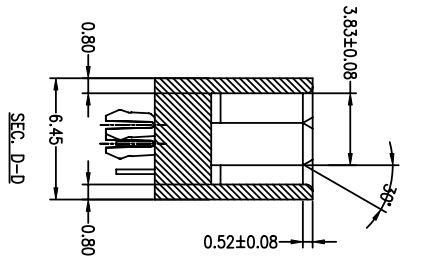
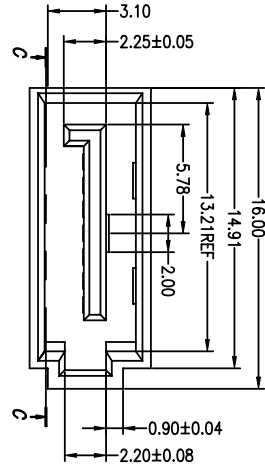
ACAD

3 |

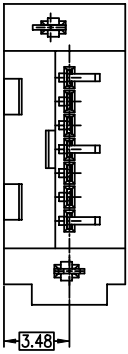
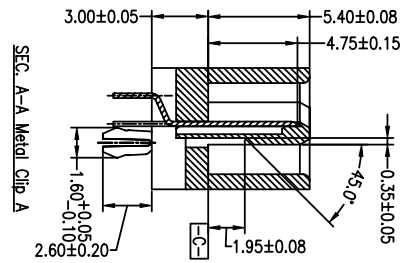
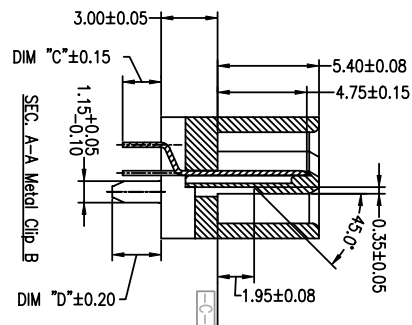
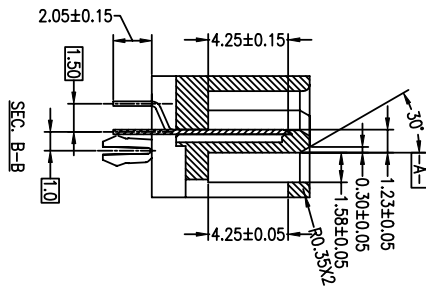
4



PRODUCT NO.10035690-XXX-4W



SUF-FIX	DIM C	DIM D
OTHERS	2.05MM	2.60MM
-XX4XLF	3.05MM	3.40MM



1 | 2

1 | 2

mat'l. code		tolerances unless otherwise specified		CUSTOMER COPY		FCI		title		product family		code	
lir	ecn no	dr	date	X ± 0.30		projection		S-ATA SIGNAL PLUG		SATA		TWIN	
A	T05-0213	W.L	09/09/05	.XX ± 0.20		MM		DIP VERTICAL TYPE ASSY		size dng no		2 of	
B	T08-1033	S.Lin	02/29/08	.XXX ± 0.10		NA				10035690			
sheet	revision	sheet	1	2	3								
index	sheet	sheet	1	2	3								

ACAD

3 |

3 |

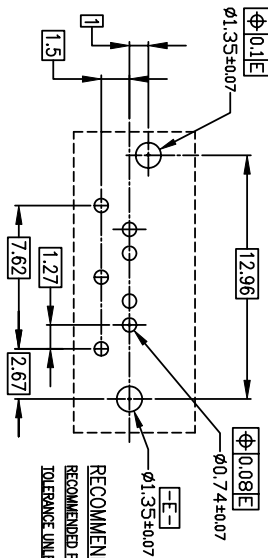
code code

4

4



1 | 2



3 |

- 10035690-X-X-X-X
- LF: Plating Tin/Lead Free
 - 3W: 3 Wall
 - 4W: 4 Wall
 - 2: Metal clip A WITH 2.05 MM TAIL
 - 3: Metal clip B WITH 2.05 MM TAIL
 - 4: Metal clip B WITH 3.05 MM TAIL (4W ONLY)
- Au thickness of contact point
 0: 15u" min
 2: 3u" min
 Housing Color
 0: Black

4

NOTES :

1. MATERIAL
 - i) HOUSING : HIGH TEMPERATURE THERMOPLASTIC UL94V-0
 - ii) TERMINAL : COPPER ALLOY
 - iii) HOLD DOWN : COPPER ALLOY
2. FINISH
 - i) TERMINAL : Au PLATING AT CONTACT POINT
 100u" min Sn-Pb or PURE TIN PLATING AT SOLDER TAIL WITH NICKEL UNDERPLATE
 - ii) HOLD DOWN : 100-200 u" Sn-Pb or PURE TIN PLATING.
3. P/N : 10035690-XXXXLF
 THE HOUSING WILL WITHSTAND EXPOSURE TO 260 DEGREE C PEAK TEMPERATURE FOR 10 SECONDS IN A WAVE SOLDER APPLICATION WITH 1.6MM MINIMUM THICK CIRCUIT BOARD.
4. Packaging spec: GS-14-840.
5. Product Spec: GS-12-194.

B

1 | 2

mat'l. code		tolerances unless otherwise specified		CUSTOMER COPY		FCI		title		code	
ltr	ecn no	dr	date	linear	projection	product family	SATA	S-ATA SIGNAL PLUG	code	TWN	sheet
A	T05-0213	W.L	09/09/05	.XX ± 0.20	MM	size	dwg no	DIP VERTICAL TYPE ASSY	10035690	3	of
B	T08-1033	S.Lin	02/29/08	.XXX ± 0.10	MM	product family	SATA				
		angles		0° ±2°	scale						
		dr	09/09/05								
		engr	09/09/05								
		chr	09/09/05								
		appr	09/09/05								
sheet	revision	B	B	B							
index	sheet	1	2	3							

ACAD

3 |

4