

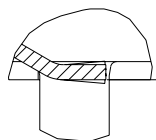
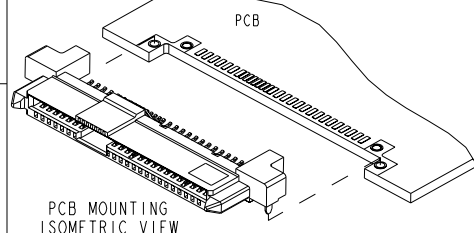
PRODUCT NO.	PACKAGING
10036587-001LF	TRAY
10036587-001TRLF	TAPE & REEL
10036587-002LF	TRAY
10036587-002TRLF	TAPE & REEL
10036587-003LF	TRAY

A

B

C

D



A

B

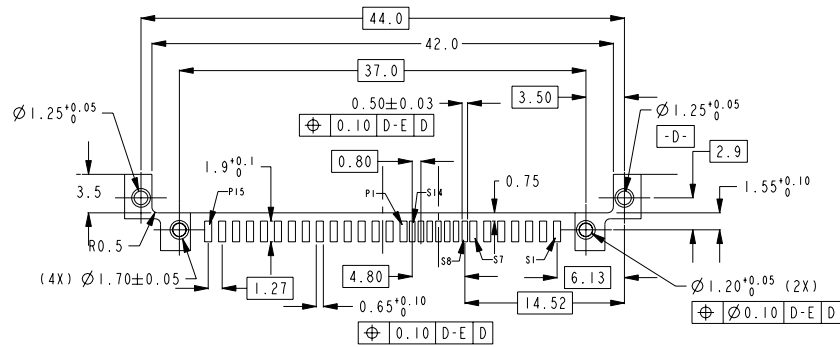
C

D

NOTES:-

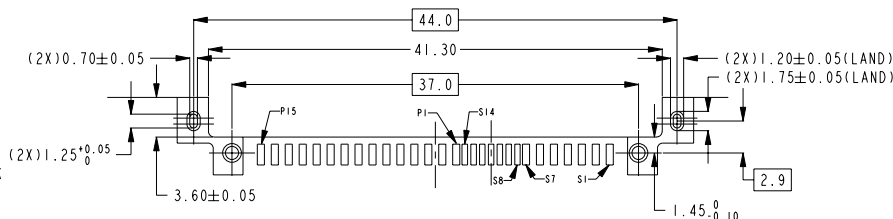
- MATERIAL:
  - HOUSING : HIGH TEMP. THERMOPLASTIC, 94V-0, COLOR: BLACK
  - TERMINAL : COPPER ALLOY
  - HOLD DOWN: COPPER ALLOY
- FINISH:
  - TERMINAL : 30u" Au PLATING (CONTACT POINT) OVER 50u" MIN NICKEL
  - SOLDER TAIL: 100u" MIN TIN OVER 50u" MIN NICKEL
  - HOLD DOWN : 100u" MIN TIN OVER 50u" MIN NICKEL
- PACKAGING:
  - 10036587-XXXLF : REFER TO STANDARD PACKAGING IN TRAY
  - 10036587-XXXTRLF: REFER TO TAPE AND REEL PACKAGING
- THE HOUSING WILL WITHSTAND EXPOSURE TO 260 DEGREES CELSIUS PEAK TEMPERATURE FOR 10 SECONDS IN A CONVECTION, INFRE-RED OR VAPOUR PHASE REFLOW OVEN
- THIS PRODUCT MEETS EUROPEAN UNION DIRECTIVES AND OTHER COUNTRY REGULATIONS AS DESCRIBED IN GS-22-008
- PART NUMBERS ENDING IN 'LF' MEANS FOR NOTE 5 LEAD FREE IDENTIFICATION, P/N XXXXXXXX-XXXLF IS EQUIVALENT TO PREVIOUS P/N XXXXXXXX-XXX
- ALL SOLDER TAIL TO BE WITHIN 0.10mm, MAX COPLANARITY.
- ALL SOLDER TAILS ANGLE CONTROL SHALL BE  $0^\circ \pm 4^\circ$  AND APPLIED TO P/N 10036587-XXXLF.
- A  $\Delta$  SYMBOL BE NEXT TO ANY DIMENSION, VIEW, OR NOTE WHICH HAS BEEN MODIFIED WITH THE CURRENT DRAWING REVISION.

REV 1 - 2004-04-17



## RECOMMENDED PCB LAYOUT

RECOMMENDED PCB T: 1.6mm  
TOLERANCE UNLESS OTHERWISE:  $\pm 0.1$



## ALTERNATIVE PCB LAYOUT

REFER TO ABOVE RECOMMENDED PCB LAYOUT FOR UNSPECIFIED DIMENSIONS  
RECOMMENDED PCB T: 1.6mm  
TOLERANCE UNLESS OTHERWISE:  $\pm 0.1$

www.fci.com				surface ASME Y14.5	tolerance std ASME Y14.5	projection	MM
TOLERANCES UNLESS OTHERWISE SPECIFIED				0.X	$\pm 0.25$	size	A4
ANGULAR				0.XX	$\pm 0.2$	Scale	2:1
LINEAR				0.XXX	$\pm$	ECN	S09-0177
Product family				Spec ref			
rev	ecn no	dr	date	Dr	JOYCE PEH	2004-08-23	
J	S08-0359	BLIM	2008-10-31	Eng	BL LIM	2009-05-27	
H	S09-0177	BLIM	2009-05-27	Chr	BL LIM	2009-05-27	
D	S06-0010	TECOS	2006-01-09	Appr	JOEY NG	2009-05-27	
E	S06-0205	JTAN	2006-06-13				
F	S07-0007	TAY	2007-01-08				
G	S07-0159	TAY	2007-05-11				
H	S08-0136	TAY	2008-05-06				



SAS RECEPTACLE  
R/A SMT ASSY

10036587

Rev.  
K

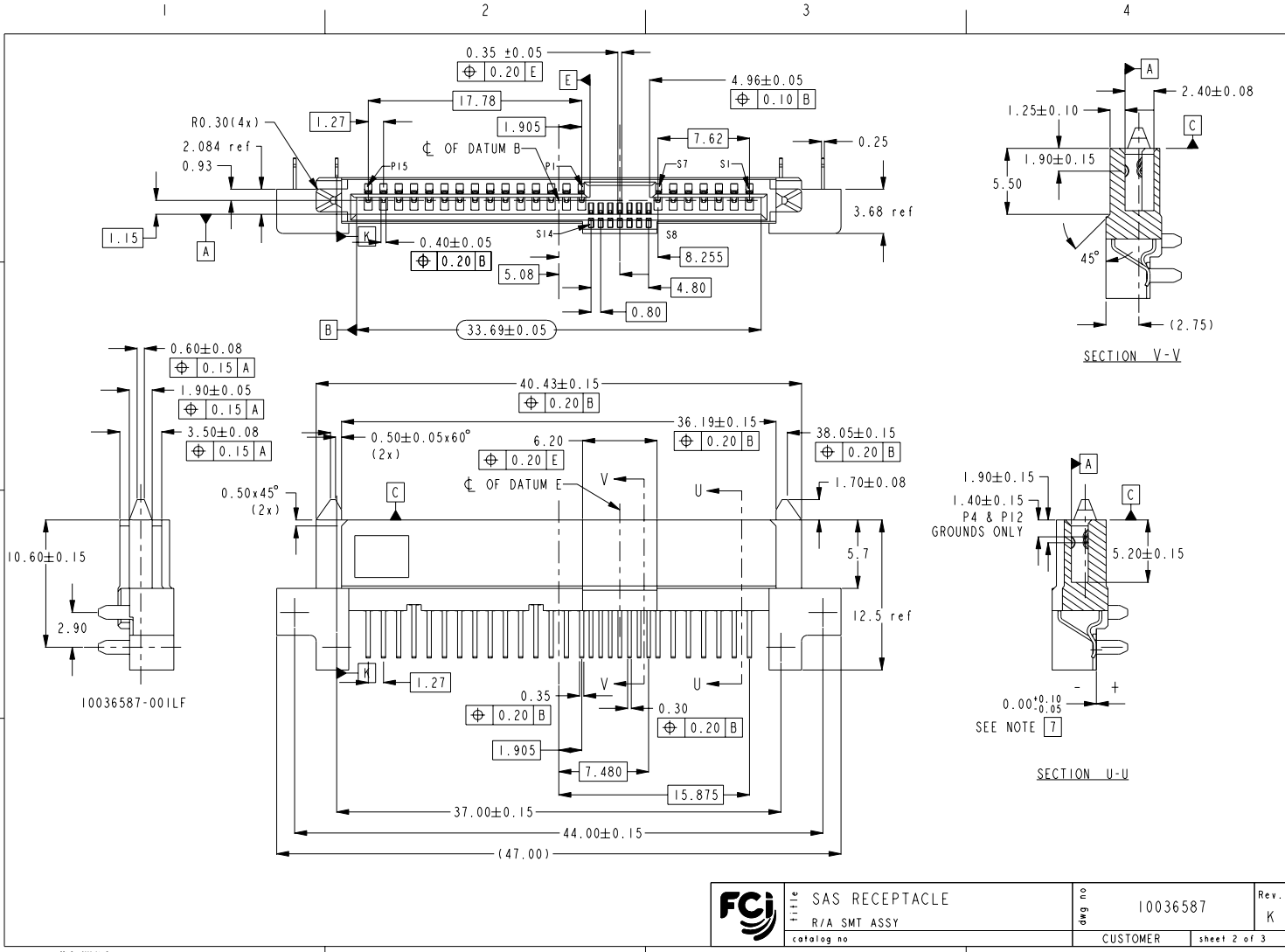
PDM: Rev:K

STATUS:Released

Printed: Dec 01, 2010



Copyright FCI.



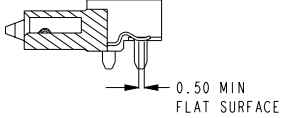
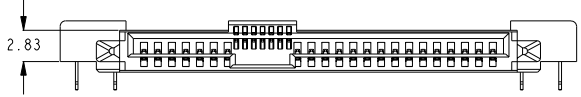
	title	SAS RECEPTACLE	dwg no	10036587	Rev.	K
	R/A SMT ASSY		CUSTOMER	sheet 2 of 3		
	catalog no					

PDM: Rev:K STATUS:Released 4 Printed: Dec 01, 2010

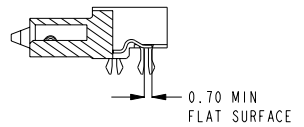
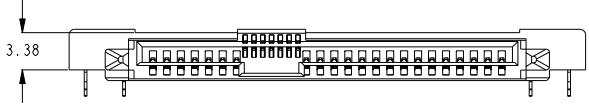


Copyright FCI.

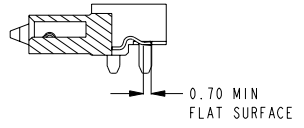
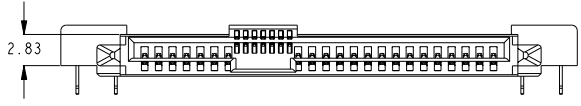
10036587-001LF



10036587-002LF



10036587-003LF



UNSPECIFIED DIMENSIONS PLEASE REFER TO PAGE 1 & 2

REV F - 2004-04-17

	title	SAS RECEPTACLE	dwg no	10036587	Rev.	K
	R/A SMT ASSY		CUSTOMER	sheet 3 of 3		
	catalog no					

PDM: Rev:K STATUS:Released<sup>4</sup> Printed: Dec 01, 2010