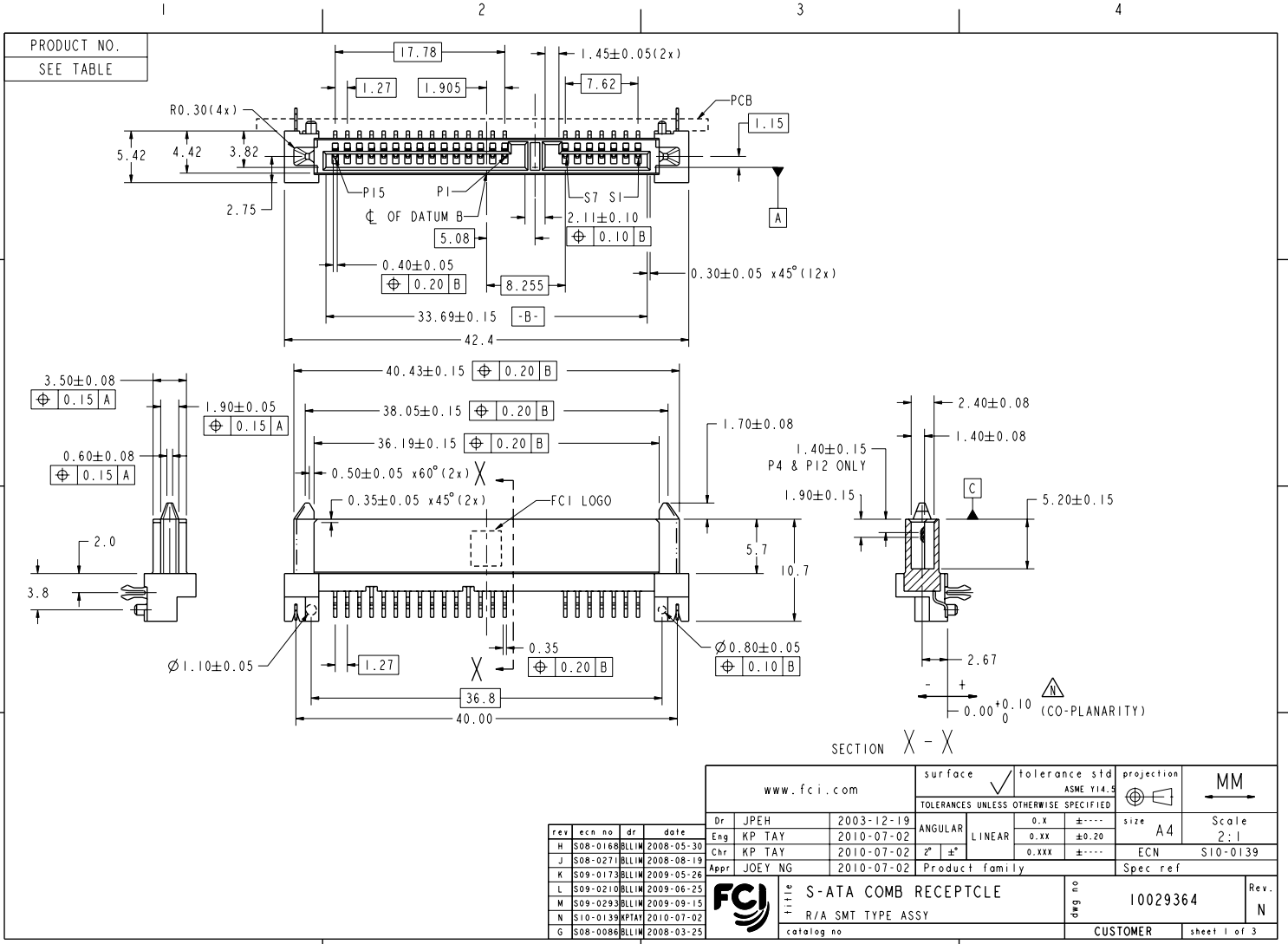




Copyright FCI.

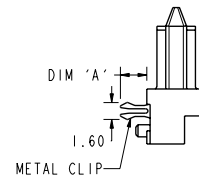
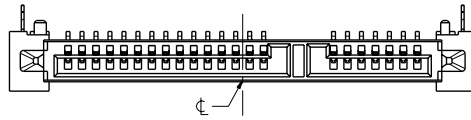


REV E - 2004-03-28

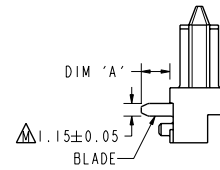
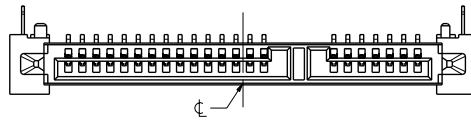
PDM: Rev:N STATUS:Released⁴ Printed: Nov 30, 2010

PRODUCT NO.	RECOMMENDED P.C.B. THICKNESS	HOLD DOWN	DIM 'A'	HOUSING WITH STAND-OFF RIBS	PACKAGING
I0029364-001LF	1.60	METAL CLIP	2.40	NO	TRAY
I0029364-001TRLF					TAPE & REEL
I0029364-002LF	1.00		1.80	NO	TRAY
I0029364-002TRLF					TAPE & REEL
I0029364-011LF	-	BLADE	2.60	NO	TRAY
I0029364-011TRLF					TAPE & REEL
I0029364-111LF	-		2.60	YES	TRAY
I0029364-111TRLF					TAPE & REEL

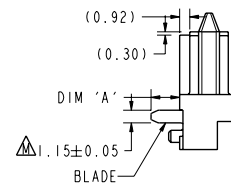
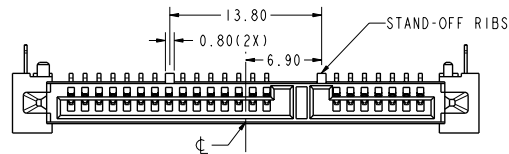
I0029364-00XLF/TRLF



I0029364-01XLF/TRLF



I0029364-11XLF/TRLF



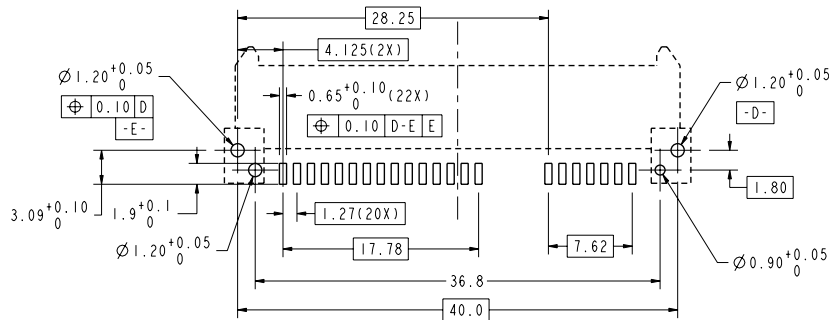
FCJ	title	S-ATA COMB RECEPTCLE	dwg no	I0029364	Rev.	N
	catalog no	R/A SMT TYPE ASSY	CUSTOMER	sheet 2 of 3		

REV E - 2004-03-28

PDM: Rev:N STATUS:Released⁴ Printed: Nov 30, 2010



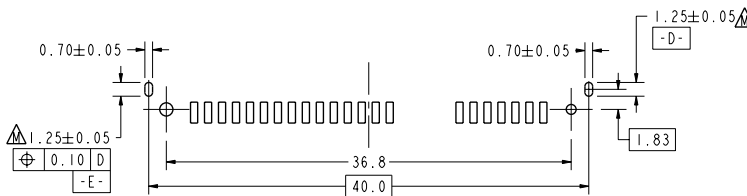
Copyright FCJ.



RECOMMENDED P.C.B. LAYOUT
TOLERANCE UNLESS OTHERWISE ±0.10

NOTES: -

1. MATERIAL:
 - 1) HOUSING : HIGH TEMP. THERMOPLASTIC, UL 94V-0
COLOR : BLACK
 - 2) TERMINAL : COPPER ALLOY
 - 3) HOLD DOWN : COPPER ALLOY
2. FINISH:
 - 1) TERMINAL : 30u" GOLD PLATING (CONTACT POINT)
OVER 50u" MIN NICKEL
 - 2) SOLDER TAIL : 100u" MIN TIN OVER 50u" NICKEL
 - 3) HOLD DOWN : 100u" MIN TIN OVER 50u" NICKEL
3. TRUE POSITION APPLY AT TERMINAL TIP
4. THE STANDARD PACKAGING IS IN TRAY.
5. THE HOUSING WILL WITHSTAND EXPOSURE TO 260°C PEAK TEMPERATURE FOR 10 SECONDS IN A CONVECTION, INFRA-RED OR VAPOR PHASE REFLOW OVEN
6. THIS PRODUCT MEETS EUROPEAN UNION DIRECTIVES AND OTHER COUNTRY REGULATIONS AS DESCRIBED IN GS-22-008
7. PART NUMBERS ENDING IN "LF" ARE MEANT FOR LEAD-FREE IDENTIFICATION. P/N XXXXXXXX-XXXLF IS EQUIVALENT TO PREVIOUS P/N XXXXXXXX-XXX
8. A Δ SYMBOL WILL BE NEXT TO ANY DIMENSION, VIEW, OR NOTE WHICH HAS BEEN MODIFIED WITH THE CURRENT DRAWING REVISION.



ALTERNATIVE P.C.B. LAYOUT
REFER TO RECOMMENDED PCB LAYOUT FOR UNSPECIFIED DIMENSIONS
TOLERANCE UNLESS OTHERWISE ±0.10

	title	S-ATA COMB RECEPTCLE	dwg no	10029364	Rev.	N
	description	R/A SMT TYPE ASSY	customer	CUSTOMER	sheet	3 of 3

REV E - 2006-03-28