

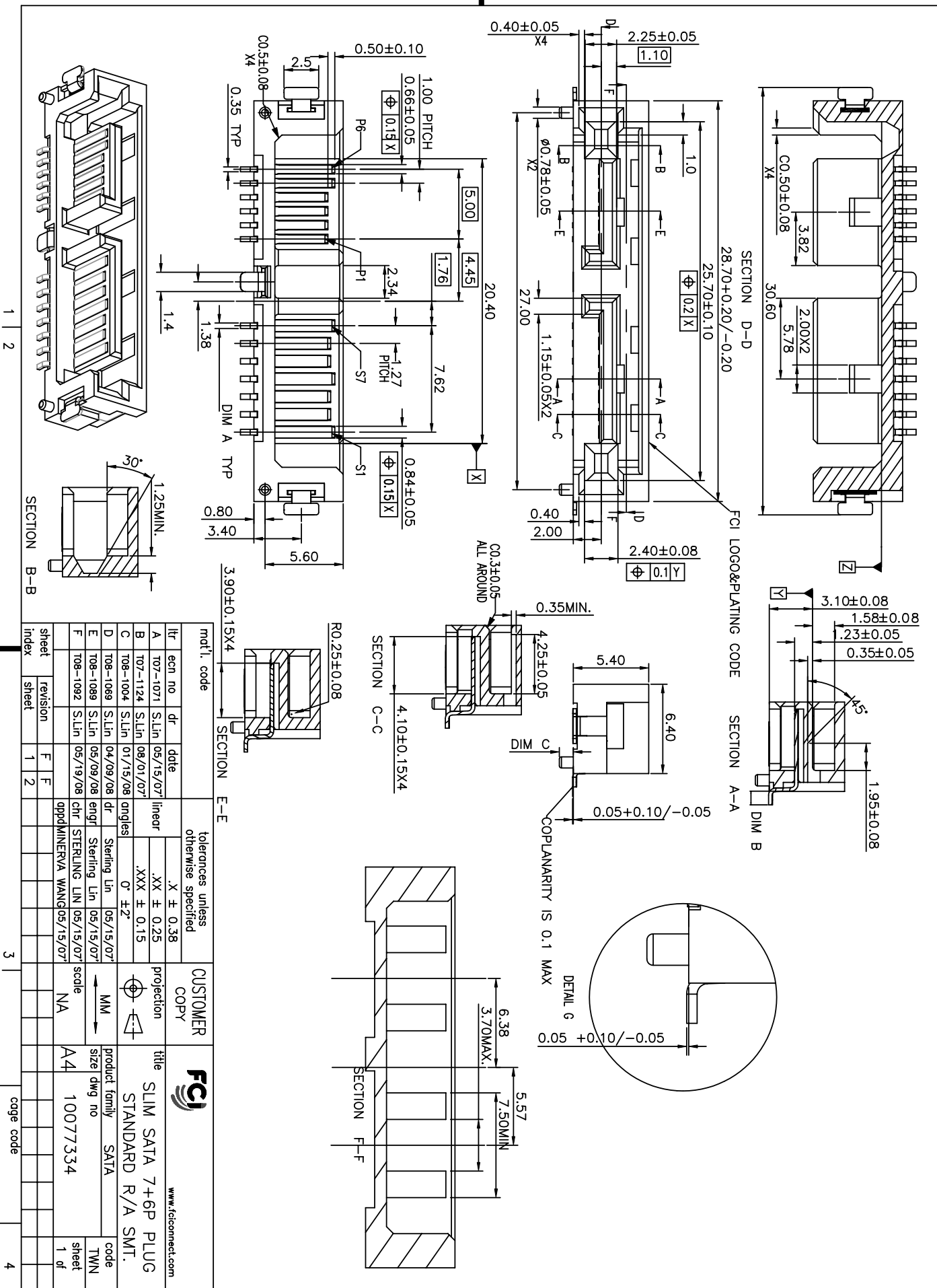
B  
1 | 2

A

1 | 2

3 |

4



1 | 2

3 |

4

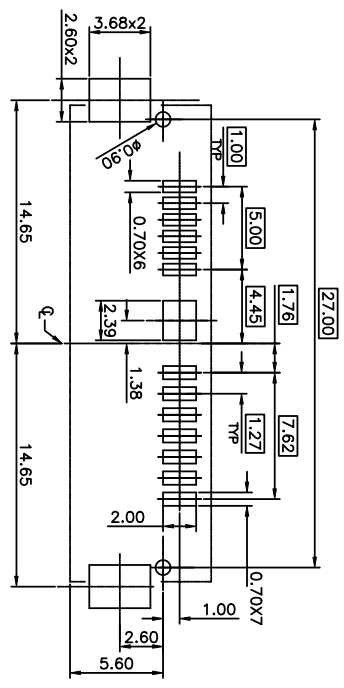
ACAD

mat'l. code		tolerances unless otherwise specified		CUSTOMER COPY		title	
ltr	ecn no	dr	date	line	projection	product family	code
A	107-1071	S.Lin	05/15/07	linear	MM	SATA	TWN
B	107-1124	S.Lin	08/01/07	.XXX ± 0.15	MM	SATA	1 of
C	108-1004	S.Lin	01/15/08	0° ± 2°	MM	SATA	
D	108-1089	S.Lin	04/09/08	Sterling Lin	MM	SATA	
E	108-1089	S.Lin	05/09/08	Sterling Lin	MM	SATA	
F	108-1092	S.Lin	05/19/08	chr STERLING LIN	MM	SATA	
index		sheet	revision	scale		code	
		1	F	NA		10077334	
		2	F			1 of	



- NOTES:
- MATERIAL: HIGH TEMPERATURE THERMOPLASTIC UL 94V-0  
COLOR: BLACK
  - FINISH:  
CONTACT: GOLD PLATING ON CONTACT AREA  
SOLDER TAB: BRASS  
CONTACT: GOLD PLATING ON CONTACT AREA  
100m" MIN. MATT TIN PLATING ON SOLDERTAILS  
50m" MIN. NICKEL UNDERPLATING OVER ALL
  - THE HOUSING WILL WITHSTAND EXPOSURE TO 260C PEAK TEMP FOR 10 SEC. IN A CONVECTION, INFRA-RED OR VAPOR PHASE REFLOW OVEN.
  - PRODUCT SPEC: GS-12-450  
PACKING SPEC: GS-14-1169
  - PRODUCT NUMBERING  
10077334 - X X 505 LF — LEAD FREE

- T&R PACKING DIM A=0.35MM, B=0.7MM, C=1.0MM
- T&R PACKING DIM A=0.40MM, B=1.0MM, C=1.0MM
- T&R PACKING DIM A=0.35MM, B=0.7MM, C=0.7MM
- G/F AT CONTACT AREA - MARK "0" WITH FCI LOGO
- 5u" GOLD AT CONTACT AREA-MARK "1" WITH FCI LOGO
- 30u" GOLD AT CONTACT AREA



RECOMMEND PCB LAYOUT  
PCB TOLERANCE: ±0.05

mat'l. code				tolerances unless otherwise specified				CUSTOMER COPY		FCI		title	
litr	ecrn no	dr	date	X ± 0.38		.XX ± 0.25		projection		product family		code	
A	107-1071	S.Lin	05/15/07'	.XXX ± 0.15		0' ±2"		M M		SATA		code	
B	107-1124	S.Lin	08/01/07'					STERLING LIN		SATA		code	
C	108-1004	S.Lin	01/15/08					STERLING LIN		SATA		code	
D	108-1069	S.Lin	04/09/08					STERLING LIN		SATA		code	
E	108-1089	S.Lin	05/09/08					STERLING LIN		SATA		code	
F	108-1092	S.Lin	05/19/08					STERLING LIN		SATA		code	
		revision											
		sheet											
		index											

www.fciconnect.com

SLIM SATA 7+6P PLUG STANDARD R/A SMT.

10077334

code code