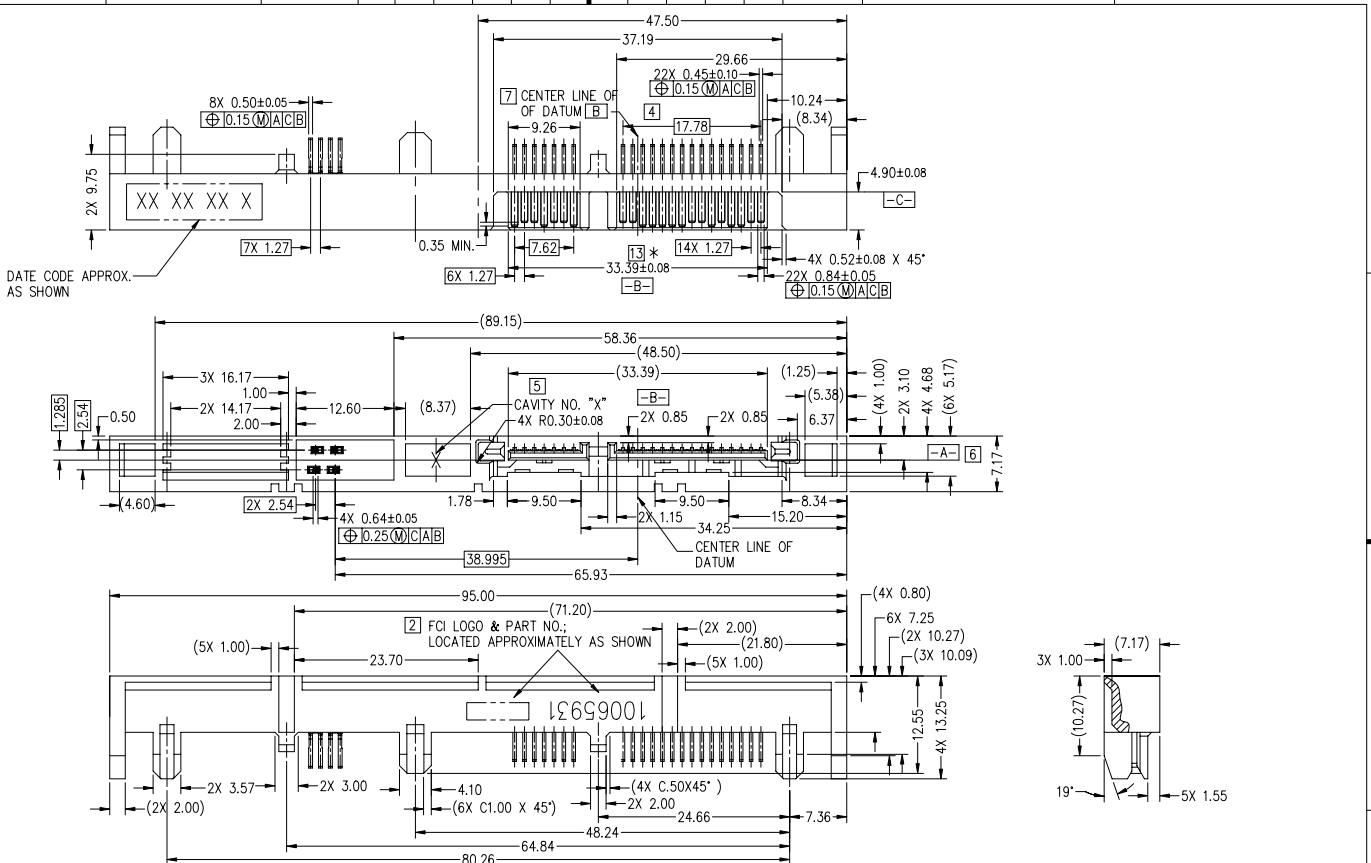
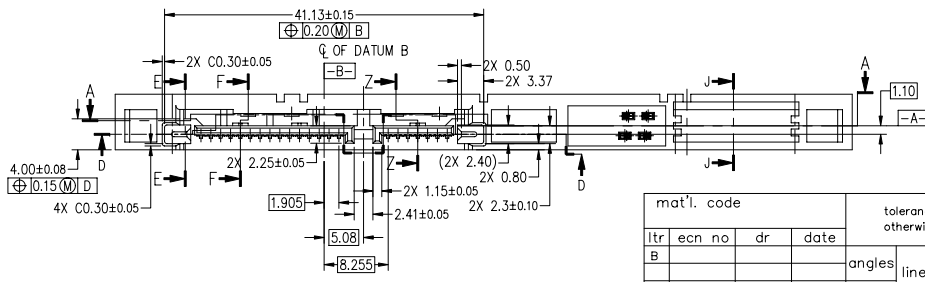
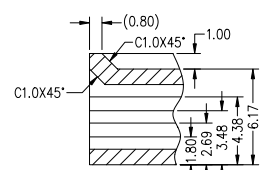
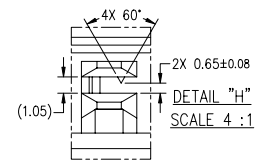
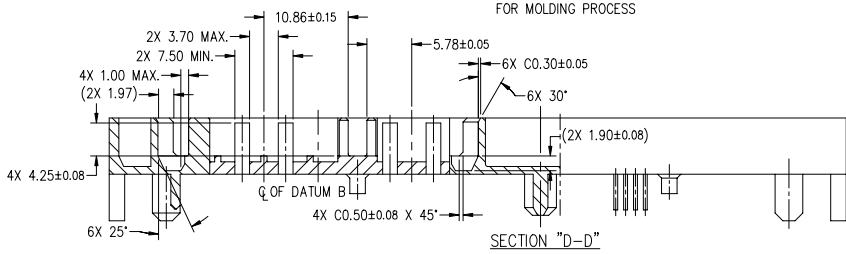
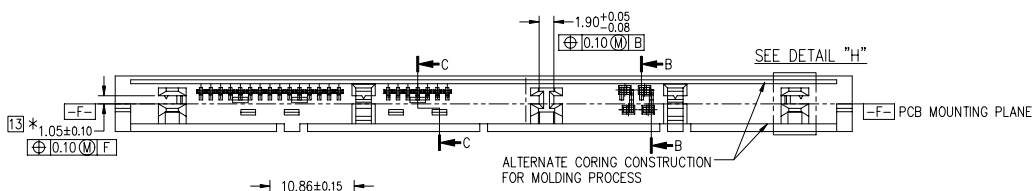
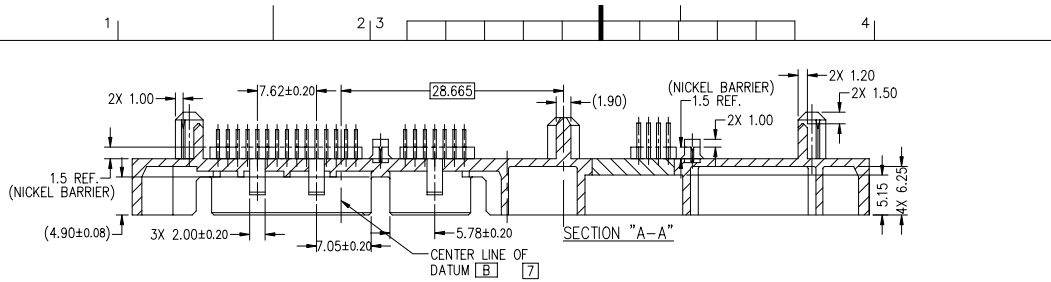


PRODUCT NO.
10065931-001LF
10065931-002LF



mat'l. code		tolerances unless otherwise specified		projection
ltr	ecn no	dr	date	
A	S06-0235	SLIM	060815	
B	S09-0238	SLIM	090907	mm
		angles	linear	±.25
		±3°		scale 2:1
		dr	SLIM	060214
		enr	SLIM	060214
		chr	SLIM	060215
		appd	JOEY NG	060217
sheet	revision	B	B	B
index	sheet	1	2	3

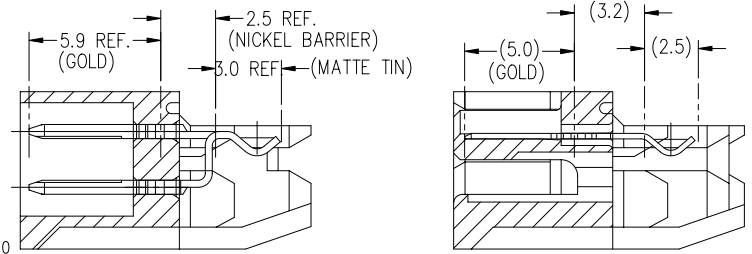
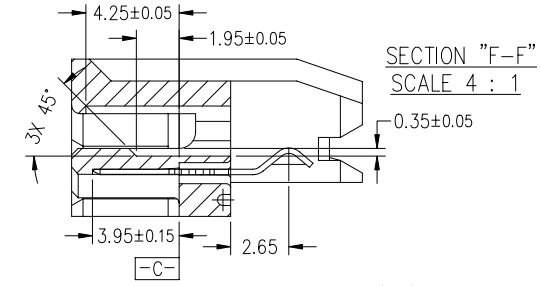
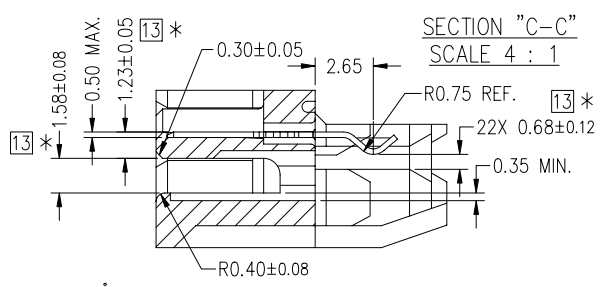
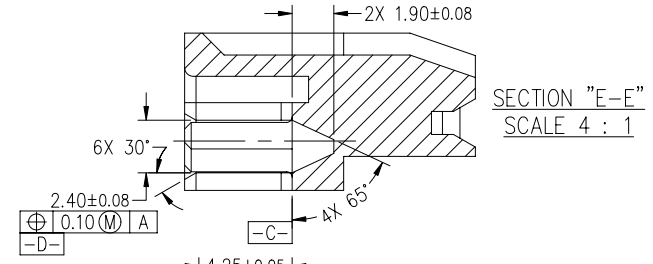
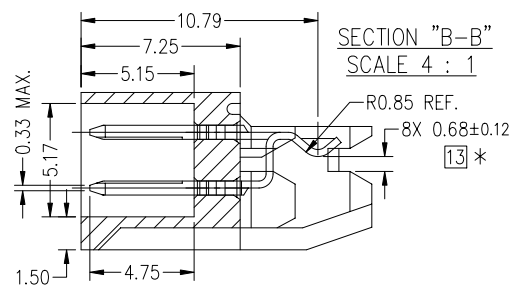
product family	SATA COMBO PLUG	
title	SATA PLUG STRADDLE (0.50mm OFFSET)	
dwg no	sheet 1 of 5	size
10065931		A3
type	Product Customer Drawing	



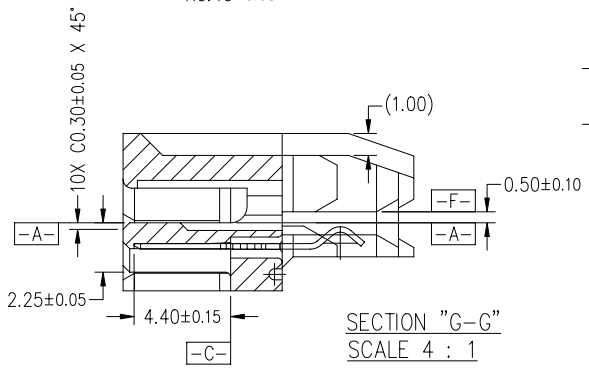
mat'l. code				tolerances unless otherwise specified			projection	product family
ltr	ecn no	dr	date	angles	linear	mm	SATA COMBO PLUG	
B				±3°	±.25	mm	SATA PLUG STRADDLE (0.50mm OFFSET)	
				dr	SLIM	060214	dwg no	
				enr	SLIM	060214	sheet 2 of 5	
				chr	SLIM	060215	size	
				appd	JOEY NG	060217	10065931	
							A3	
sheet	revision						type	
index	sheet						Product Customer Drawing	

PDM: Rev:B STATUS:Released Printed: Sep 23, 2009

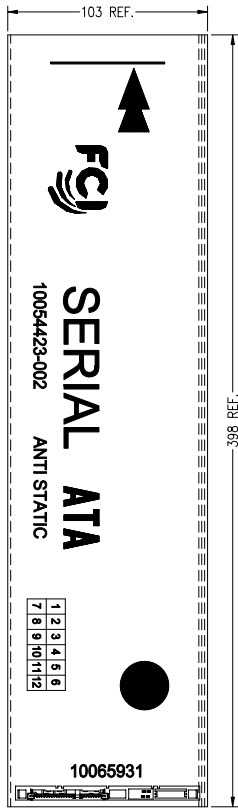
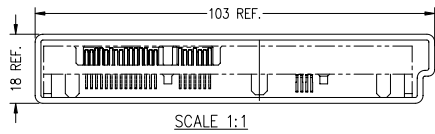
Copyright FCI
FCIconnect.com



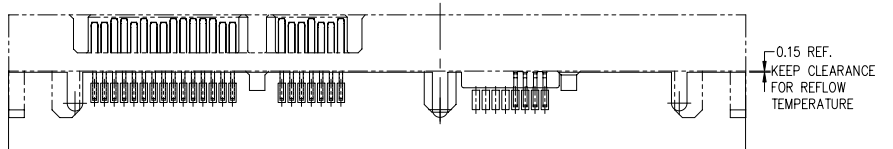
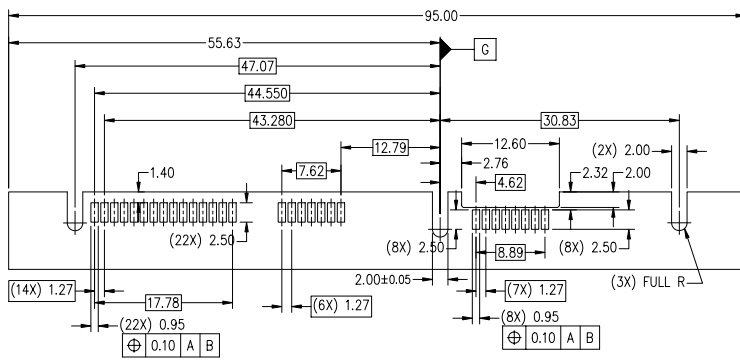
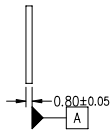
(FOR PLATING ONLY)



mat'l. code		tolerances unless otherwise specified			projection	product family	
ltr	ecn no	dr	date	angles	 mm scale 2:1	SATA COMBO PLUG	
B				linear		title	
				±3°		SATA PLUG STRADDLE (0.50mm OFFSET)	
				dr		dwg no	sheet 3 of 5
				enr		10065931	size
				chr			A4
				appd		type Product Customer Drawing	
sheet index	revision sheet						



NOTES:
 CONNECTOR ORIENTATION IN PACKAGING
 52 PIECES PER CARTRIDGE TUBE
 MATERIAL THICKNESS 1.20mm.
 GENERAL TOLERANCE ±0.35mm
 (STOPPER NOT SHOWN)



mat'l. code				tolerances unless otherwise specified			projection	product family
ltr	ecn no	dr	date	angles	linear	 mm scale 2:1	SATA COMBO PLUG	
B				±3°	±.25			title SATA PLUG STRADDLE (0.50mm OFFSET)
				dr	SLLIM	060214	product family sheet 4 of 5 size 10065931 A3	
				enrg	SLLIM	060214	sheet index revision sheet	
				chr	SLLIM	060215	type Product Customer Drawing	
				appd	JOEY NG	060217		

NOTES :

1. MATERIALS:

A. HOUSING:

HIGH TEMPERATURE THERMOPLASTIC MATERIAL, UL 94V-0, COLOR: BLACK. MAXIMUM REGRIND MATERIAL IS NOT TO EXCEED 25% MOLD FLASH SHALL NOT COVER ANY PORTION OF THE MATING CONTACT SURFACE AND SHALL NOT EXCEED 0.23mm MAXIMUM AT NON-CRITICAL OR FUNCTION AREAS.

B. CONTACT PIN: COPPER ALLOY (BRASS).

2. FINISH:

A. SATA SIGNAL & POWER PINS: (MATING SIDE)

1.27um [50u"] MINIMUM, 2.54um [100u"] MAXIMUM NICKEL UNDER PLATE WITH 0.127um [5u"] MINIMUM GOLD IN CONTACT AREA.

B. 0.64mm JUMPER PINS (MATING SIDE)

1.27um [50u"] MINIMUM, 2.54um [100u"] MAXIMUM NICKEL UNDER PLATE WITH 0.127um [5u"] MINIMUM GOLD IN CONTACT AREA.

C. ALL SOLDER TAILS:

1.91um [75u"] MINIMUM LEAD-FREE (100%) TIN, PLATING COVERAGE: 95% MINIMUM FOR UNDER AND OVERPLATE.

3. SOLDER TAIL REQUIREMENTS:

ENTIRE DATA PIN IS TO BE PLATED. EXPOSED BASE METAL AT END OF SOLDER TAIL (DUE TO FABRICATION PROCESS) IS ACCEPTABLE. IF SOLDER FABRICATION REQUIRES A SHEARING PROCESS. A SHEAR DIRECTION OF BOTTOM TO TOP OF SOLDER TAIL IS PREFERRED TO ALLOW FOR PLATING WIPE AT THE END OF TAIL.

4. WARPAGE REQUIREMENTS: (BOW AND TWIST)

MAXIMUM WARPAGE 0.23 mm OVER THE LENGTH OF THE CONNECTOR.

[5] PRODUCT IDENTIFICATION, MANUFACTURE NAME, CAVITY NUMBER AND / OR LOGO SHALL BE MARKED ON THE SURFACE OF THE CONNECTOR APPROXIMATELY WHERE SHOWN.

[6] [-A-] IS DEFINED AS THE TOP PORTION OF THE NOTED BLADE SURFACE.

[7] [-B-] IS DEFINED AS THE CENTERLINE OF THE (33.39) mm DIMENSION.

8. PIN RETENTION FORCE : SIGNAL PINS 1.32LBS (0.6 Kg)/PIN
POWER: 2.2 LBS (1.0 Kg)/PIN

9. FLASH SHALL NOT COVER ANY PORTION OF THE MATING SURFACE AND SHALL NOT EXCEED 0.15mm MAX. AT NON-CRITICAL OR FUNCTIONAL AREA.

10. ALTERNATE CORING AND RIB CONSTRUCTION FOR CONTROLLING WARPAGE WITHOUT ANY FUNCTIONAL PROBLEMS ON CONNECTOR.

11. THIS PRODUCT MEETS EUROPEAN UNION DIRECTIVES AND OTHER COUNTRY REGULATIONS AS DESCRIBED IN GS-22-008.

12. THE HOUSING WILL WITHSTAND EXPOSURE TO 260°C TEMPERATURE FOR 10 SECONDS IN A CONVECTION, INFRA-RED OR VAPOR PHASE REFLOW OVEN.

[13] CPK DATA CONTROL DENOTED & MARKED AS "*".

14. PACKAGING - 52 CONNECTOR PER CARTRIDGE TUBE.

[15] MARKING REQUIREMENTS: DATE CODE LABEL PRINTING APPROXIMATELY WHERE SHOWN BY THE LETTER "Y".

mat'l. code				tolerances unless otherwise specified			projection	product family		
ltr	ecn no	dr	date	angles	linear	±.25	mm	SATA COMBO PLUG		
B								±3°	scale 2:1	title
				dr	SLLIM	060214		SATA PLUG STRADDLE		
				enrg	SLLIM	060214		(0.50mm OFFSET)		
				chr	SLLIM	060215		dwg no		
				appd	JOEY NG	060217		10065931		
sheet index		revision sheet					type			
							Product Customer Drawing			

PDM: Rev:B

STATUS:Released

Printed: Sep 23, 2009