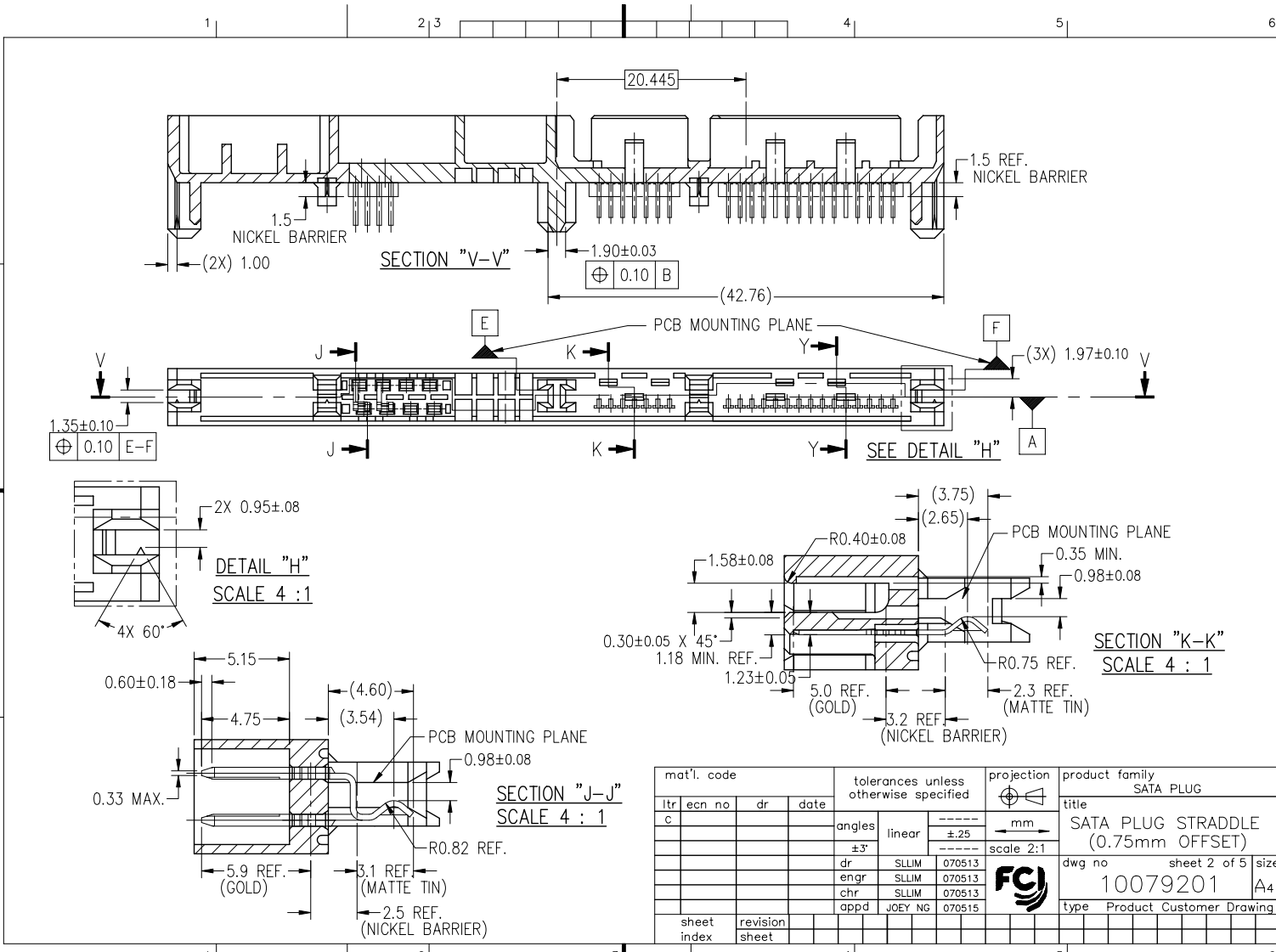


mat'l. code				tolerances unless otherwise specified			projection	product family	
ltr	ecn no	dr	date	angles	linear	mm	SATA PLUG		
A	S07-0432	SLLIM	071129	±3°	---	mm	title		
B	S08-0092	SLLIM	080328	---	±.25	mm	SATA PLUG STRADDLE		
C	S08-0117	SLLIM	081015	---	---	mm	(0.75mm OFFSET)		
				dr	SLLIM	070513	scale 2:1		
				enr	SLLIM	070513			
				chr	SLLIM	070513			
				appd	JOEY NG	070515			
sheet index	revision sheet	C	C	C	C	C	dwg no	sheet 1 of 5	size
		1	2	3	4	5	10079201	A3	
							type	Product Customer Drawing	

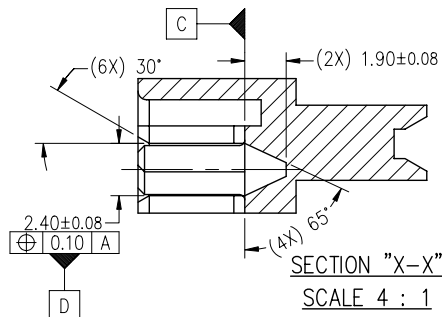
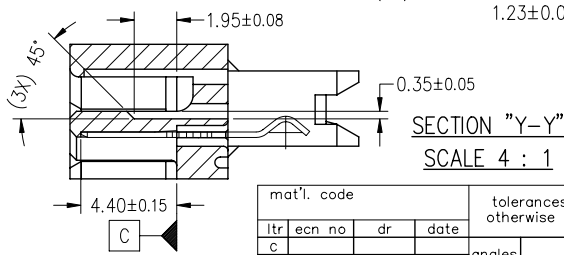
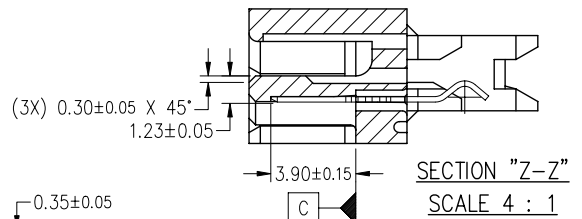
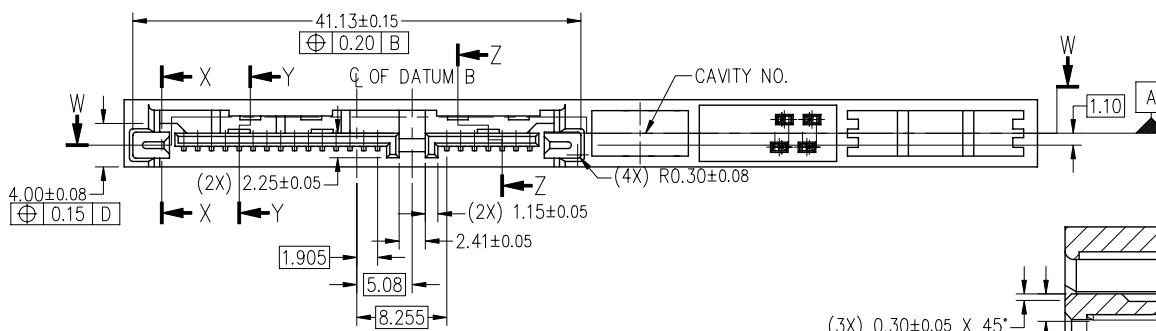
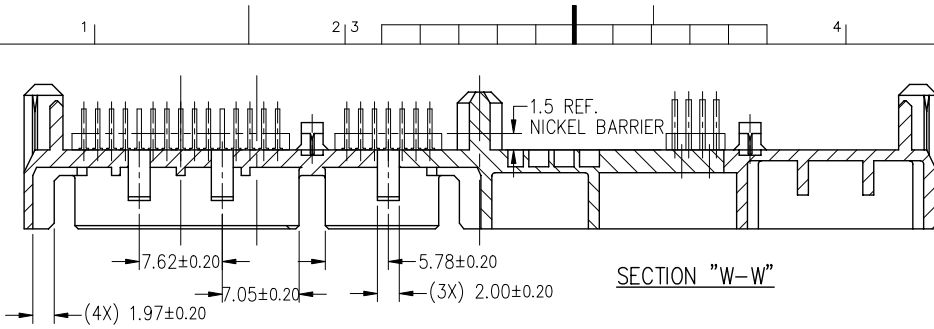
PDM: Rev:C STATUS Released Printed: Oct 29, 2008

FCI  
 FCIconnect.com  
 Copyright FCI



mat'l. code		tolerances unless otherwise specified		projection	product family
ltr	ecn no	dr	date	 mm scale 2:1	SATA PLUG
c					title
			angles		SATA PLUG STRADDLE (0.75mm OFFSET)
			linear		±.25 scale 2:1
			±3'		dwg no
			dr		sheet 2 of 5
			enrg		size
			chr		A4
			appd		10079201
					type
					Product Customer Drawing
sheet index	revision	sheet			

PDM: Rev: C      STATUS: Released      Printed: Oct 29, 2008



mat'l. code				tolerances unless otherwise specified			projection		product family	
ltr	ecn no	dr	date	angles	linear	±.25	mm	SATA PLUG		
c				±3°		scale 2:1		title		
				dr	SLLIM	070513		SATA PLUG STRADDLE		
				enrg	SLLIM	070513		(0.75mm OFF-SET)		
				chr	SLLIM	070513		dwg no	sheet 3 of 5	
				appd	JOEY NG	070515		10079201	size	
									A4	
sheet index	revision sheet							type Product Customer Drawing		

PDM: Rev:C STATUS Released Printed: Oct 29, 2008



**NOTES :**

**1. MATERIALS:**

**A. HOUSING:**

HIGH TEMPERATURE THERMOPLASTIC MATERIAL, UL 94V-0,  
 COLOR: BLACK.  
 MOLD FLASH SHALL NOT COVER ANY PORTION OF THE MATING  
 CONTACT SURFACE AND SHALL NOT EXCEED 0.15mm (.006")  
 MAXIMUM AT NON-CRITICAL OR FUNCTION AREAS.

**B. CONTACT PIN: COPPER ALLOY (BRASS).**

**2. FINISH:**

**A. SATA SIGNAL & POWER PINS: (MATING SIDE)**

1.27um [50u"] MINIMUM, 2.54um [100u"] MAXIMUM NICKEL UNDER  
 PLATE WITH 0.127um [5u"] MINIMUM GOLD IN CONTACT AREA.

**B. 0.64mm JUMPER PINS (MATING SIDE)**

1.27um [50u"] MINIMUM, 2.54um [100u"] MAXIMUM  
 NICKEL UNDER PLATE WITH 0.127um [5u"] MINIMUM  
 GOLD IN CONTACT AREA.

**C. ALL SOLDER TAILS:**

1.91um [75u"] MINIMUM LEAD-FREE (100%) TIN,  
 PLATING COVERAGE: 95% MINIMUM FOR UNDER  
 AND OVERPLATE.

**3. WARPAGE REQUIREMENTS: (BOW AND TWIST)**

MAXIMUM WARPAGE 0.13 mm (.005") OVER THE LENGTH OF THE

**4.** PART MARKING: MANUFACTURE NAME AND / OR LOGO SHALL BE MARKED ON  
 THE SURFACE OF THE CONNECTOR APPROXIMATELY WHERE SHOWN.

**5.** [-A-] IS DEFINED AS THE TOP PORTION OF THE NOTED BLADE SURFACE.

**6.** [-B-] IS DEFINED AS THE CENTERLINE OF THE (33.39)mm DIMENSION.

8. TYPICAL WALL THICKNESS (1.0 mm).


9. PIN RETENTION FORCE SHALL BE (0.6 Kg) MIN. PER PIN.


9. ALTERNATE CORING AND RIB CONSTRUCTION FOR MOLDING PROCESS.

10. PACKAGING – 51 CONNECTOR PER CARTRIDGE TUBE.

11. THIS PRODUCT MEETS EUROPEAN UNION DIRECTIVES AND OTHER COUNTRY  
 REGULATIONS AS DESCRIBED IN GS-22-008.

12. THE HOUSING WILL WITHSTAND EXPOSURE TO 260°C TEMPERATURE FOR  
 10 SECONDS IN A CONVECTION, INFRA-RED OR VAPOR PHASE REFLOW OVEN.

13. A  SYMBOL WILL BE NEXT TO ANY DIMENSION, VIEW, OR NOTE  
 WHICH HAS BEEN MODIFIED WITH THE CURRENT DRAWING REVISION.

mat'l. code				tolerances unless otherwise specified			projection	product family
ltr	ecn no	dr	date	angles	linear	mm	SATA PLUG	
C				±3'	.XX±.25	mm	title	
				dr	SLLIM 070513	scale 2:1	SATA PLUG STRADDLE (0.75mm OFF-SET)	
				enrg	SLLIM 070513		dwg no	
				chr	SLLIM 070513		sheet 5 of 5	
				appd	JOEY NG 070515		size	
				sheet index	revision sheet		10079201	
							A4	
							type Product Customer Drawing	

**PDM: Rev:C**

**STATUS Released**

Printed: Oct 29, 2008