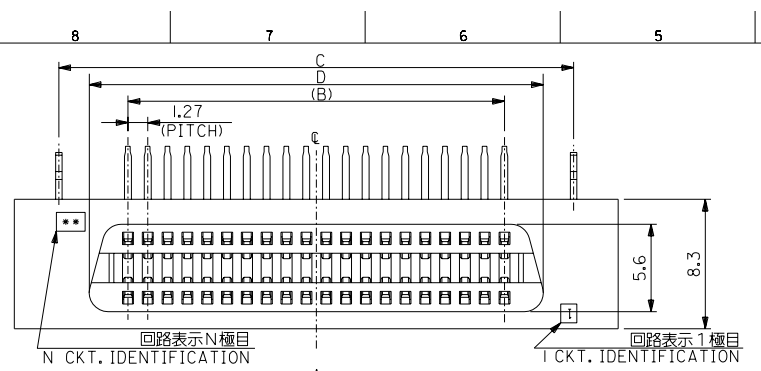
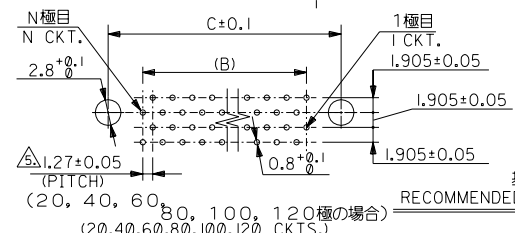
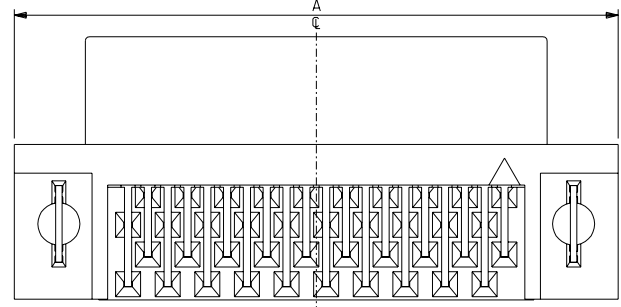


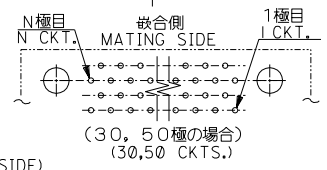
DWG. NO. SD-52409-006



- 注) 1.材質 MATERIAL
 HOUSING : GLASS FILLED POLYESTER, UL94V-0, COLOR:BLACK
 TERMINAL : PHOSPHOR BRONZE
 金属ペグ : リン青銅
 METAL PEG: PHOSPHOR BRONZE
- 2.メッキ仕様 PLATING
 接点部金メッキ : 0.1 MICROMETER MIN.
 CONTACT AREA : GOLD 0.1 MICROMETER MIN.
 半田付け部 : 錫メッキ 1.0 MICROMETER MIN.
 SOLDER AREA : TIN 1.0 MICROMETER MIN.
 下地メッキ : ニッケルメッキ 1.0 MICROMETER MIN.
 UNDER-PLATE : NICKEL 1.0 MICROMETER MIN.
- 3.推奨基板厚 RECOMMENDED P.C.B. THICKNESS $\pm 1.6 \pm 0.05$
4. 適合相手 TO MATE WITH MOLEX : 52340, 52411, 52327, 52412 SERIES.
- △ 公差非累積 TOLERANCE NOT TO BE CUMULATIVE
6. 金属ペグ無しの製品は、52410-***1
 52410-***1: PRODUCT WITHOUT METAL PEG
7. 本製品は 52409-**01 の鉛フリー品である。
 THIS PRODUCT IS LEAD FREE OF 52409-**01.



基板穴推奨寸法 (部品実装側)
 RECOMMENDED P.C.B. LAYOUT (MOUNTING SIDE)



79.90	83.82	74.93	89.50	52409-1271	120
67.20	71.12	62.23	76.80	-1071	100
54.50	58.42	49.53	64.10	-0871	80
41.80	45.72	36.83	51.40	-0671	60
35.45	39.37	30.48	45.05	-0571	50
29.10	33.02	24.13	38.70	-0471	40
22.75	26.67	17.78	32.35	-0371	30
16.40	20.32	11.43	26.00	52409-0271	20

EC NO. DRWN: CHK: APPR:	EC NO. DRWN: CHK: APPR:	EC NO. DRWN: CHK: APPR:	EC NO. DRWN: CHK: APPR:	EC NO. DRWN: CHK: APPR:
----------------------------------	----------------------------------	----------------------------------	----------------------------------	----------------------------------

新製/作成/RELEASED ECONO. J2004-3072 DRWN: H. KAWABATA '04/03/12 CHK: K. TOJO '04/03/12 APPR: M. SASAO '04/03/12	DESCRIPTION	MATERIAL 材料 注参照 SEE NOTE 1.
--	-------------	--------------------------------------

GENERAL TOLERANCES: (UNLESS SPECIFIED) 一般公差	SCALE	DESIGN UNITS mm INCH
10 UNDER 未滿	+0.2	DRAWN BY & DATE H. KAWABATA '04/03/12
10 OVER 以上	+0.25	CHECKED BY & DATE K. TOJO '04/03/12
30 OVER 以上	+0.3	APPROVED BY & DATE M. SASAO '04/03/12
WIRE RANGE 適用電線範囲	ANGLE 角度	CAD FILENAME SD-52409-006.S01

MODEL NO. 52409-**71	THIRD ANGLE PROJECTION	TITLE: 1.27 B TO B RIGHT-ANGLE REC. ASS'Y -LEAD FREE-
DIMENSIONS: mm INCH mm ONLY	MOLEX INCORPORATED	MATERIAL NO. SD-52409-006
SHT REV REVISE ON CAD ONLY	SHEET NO. 1 OF 1	DRAWING NO. SD-52409-006
THIS DRAWING CONTAINS INFORMATION THAT IS PROPRIETARY TO MOLEX INCORPORATED AND SHOULD NOT BE USED WITHOUT WRITTEN PERMISSION.		