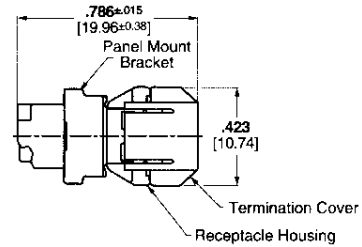
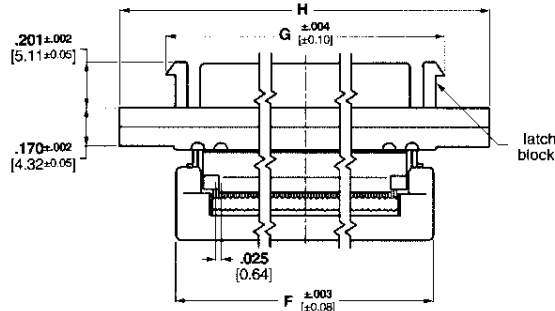
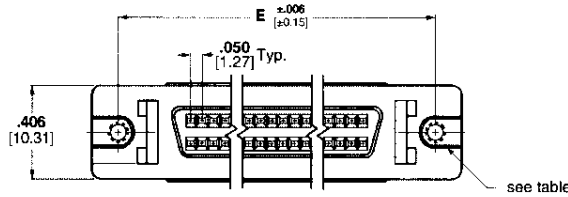


AMPLIMITE .050 Series Panel Mount Receptacle Assemblies for .025 [0.64] Centerline Ribbon Cable, Series III



Materials:

Housing and Termination

Covers—Thermoplastic, 94V-0 rated, black

Shell—Steel, plated bright tin over copper

Bracket—Zinc, plated nickel over copper

Contacts—Phosphor bronze, duplex plated .000030 [0.00076] min. gold on mating end; tin-lead on solder end; all nickel underplated

Recommended wire size—
.025 [0.64] centerline, 30 AWG [0.05mm²] and 32 AWG [0.03mm²] solid or 7 strand, PVC, flat ribbon cable. Selection of compatible ribbon cable is the responsibility of the user.

Technical Documents:

See customer drawings for Product Performance criteria.

■ **Recognized under the Component Program of Underwriters Laboratories, Inc., File No. E28476**



■ **Certified by Canadian Standards Association, File No. LR 7189**



| No. of Pos. | Dimensions | | | | Gold Plating | Mating Hardware | Part No. | |
|-------------|----------------|----------------|----------------|----------------|----------------|---|---|------------|
| | E | F | G | H | | | | |
| 50 | 1.831 46.50 | 1.602 40.70 | N/A | 2.066 52.47 | 15μ | w/ 4-40 threaded holes | 1-390378-5 | |
| | 1.831 46.50 | 1.602 40.70 | N/A | 2.066 52.47 | 30μ | w/ 4-40 threaded holes | 390378-5 | |
| | 1.831 46.50 | 1.602 40.70 | 1.664 42.27 | 2.066 52.47 | flash | w/ latch blocks and 4-40 threaded holes | 2-390399-5 | |
| | 1.831 46.50 | 1.602 40.70 | 1.664 42.27 | 2.066 52.47 | 15μ | w/ latch blocks and 4-40 threaded holes | 1-390399-5 | |
| | 1.831 46.50 | 1.602 40.70 | 1.664 42.27 | 2.066 52.47 | 30μ | w/ latch blocks and 4-40 threaded holes | 390399-5 | |
| | 1.831 46.50 | 1.602 40.70 | 1.664 42.27 | 2.066 52.47 | 30μ | w/ latch blocks and 2-56 threaded holes | 390379-5 | |
| | 68 | 2.281 57.93 | 2.018 51.50 | N/A | 2.516 63.90 | 15μ | w/ 4-40 threaded holes | 1-390378-7 |
| | | 2.281 57.93 | 2.018 51.50 | N/A | 2.516 63.90 | 30μ | w/ 4-40 threaded holes | 390378-7 |
| | | 2.281 57.93 | 2.018 51.50 | 2.114 53.70 | 2.516 63.90 | flash | w/ latch blocks and 4-40 threaded holes | 2-390399-7 |
| | | 2.281 57.93 | 2.018 51.50 | 2.114 53.70 | 2.516 63.90 | 15μ | w/ latch blocks and 4-40 threaded holes | 1-390399-7 |
| | | 2.281 57.93 | 2.018 51.50 | 2.114 53.70 | 2.516 63.90 | 30μ | w/ latch blocks and 4-40 threaded holes | 390399-7 |
| | | 2.281 57.93 | 2.018 51.50 | 2.114 53.70 | 2.516 63.90 | 30μ | w/ latch blocks and 2-56 threaded holes | 390379-7 |

Note: Termination Tooling: Manual Arbor Press Part No. 91085-2 or Pneumatic Press Part No. 91112-3, Universal Base Tool Part No. 768338-4, and Connector Specific Kit Part No. 1490479-1.

AMPLIMITE .050 Series Connectors, Series III