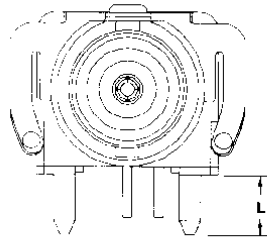


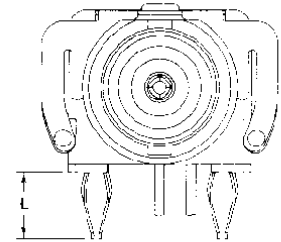
**Decoupled Connectors (Continued)**

**PC Board/Panel Mount  
Jacks Decoupled to Panel**  
(Continued)

**Mounting Post Styles**



Standard



Compliant

**BNC**

Description	Capacitance/ Voltage	Clip	Mounting Post	L Mounting Post Length	B*	A*	Style <sup>1</sup>	Part No.
Vertical 50Ω	9400pF 1500VDC	Standard	Standard	3.48 .137	—	—	A	413476-2
Standard Right Angle 50Ω	9400pF 1500VDC	Standard	Standard	4.01 .158	15.88 .625	8.59 .338	B	413524-2
	9400pF 1500VDC	Standard	Compliant	2.79 .110	15.88 .625	8.59 .338	B	413524-5
Standard Right Angle W/O Mounting Post 50Ω <sup>2</sup>	9400pF 1500VDC	Standard	—	—	15.88 .625	8.59 .338	B	414215-1
	9400pF 1500VDC	Standard	Standard	4.01 .158	13.18 .519	6.91 .272	B	413515-2
Low Profile Right Angle 50Ω	20000pF 500VDC	Standard	Standard	4.01 .158	13.18 .519	6.91 .272	B	413515-3
	7900pF 1600VDC	Standard	Compliant	2.79 .110	13.18 .519	6.91 .272	B	413515-7
	9400pF 1500VDC	Standard	Compliant	4.70 .185	13.18 .519	6.91 .272	B	413515-8
	9400pF 1500VDC	Standard	Compliant	2.79 .110	13.18 .519	6.91 .272	B	413515-9
Low Profile Right Angle W/Special Clip & High Temperature Housing 50Ω	500pF 2200VDC	Standard	Standard	4.01 .158	13.18 .519	6.91 .272	B	1-413515-1
	9400pF 500VDC	Extended	Compliant	4.70 .185	13.18 .519	6.91 .272	B	414284-1
Low Profile Right Angle W/High Temperature Housing 50Ω	9400pF 500VDC	Extended	Compliant	2.79 .110	13.18 .519	6.91 .272	B	414284-2
	9400pF 500VDC	Flush	Compliant	4.70 .185	13.18 .519	6.91 .272	B	414352-1
Low Profile Right Angle 75Ω	9400pF 500VDC	Flush	Compliant	2.79 .110	13.18 .519	6.91 .272	B	414352-2
	9400pF 1500VDC	Standard	Standard	4.01 .158	13.18 .519	—	B	414094-2
Ultra Low Profile Right Angle 50Ω	9400pF 1500VDC	Standard	Standard	4.01 .158	6.17 .243	11.68 .460	—	415057-1
	9400pF 1500VDC	Standard	Compliant	2.79 .110	6.17 .243	11.68 .460	—	415057-2
Ultra Low Profile Right Angle 75Ω	9400pF 1500VDC	Standard	Standard	4.01 .158	6.17 .243	11.68 .460	—	415103-1
	9400pF 1500VDC	Standard	Compliant	2.79 .110	6.17 .243	11.68 .460	—	415103-2

<sup>1</sup>See pages 80 and 81 for Connector Styles.  
<sup>2</sup>See customer drawing for PC Board Layout.  
<sup>3</sup>See page 80 for dimension reference.

**TNC**

Description	Capacitance/ Voltage	Clip	Mounting Post	L Mounting Post Length	B*	A*	Style <sup>1</sup>	Part No.
Low Profile Right Angle 50Ω	5400pF 1500VDC	Standard	Standard	4.01 .158	13.18 .519	6.91 .272	B	414138-1

<sup>1</sup>See pages 80 and 81 for Connector Styles.  
<sup>2</sup>See customer drawing for PC Board Layout.  
<sup>3</sup>See page 80 for dimension reference.