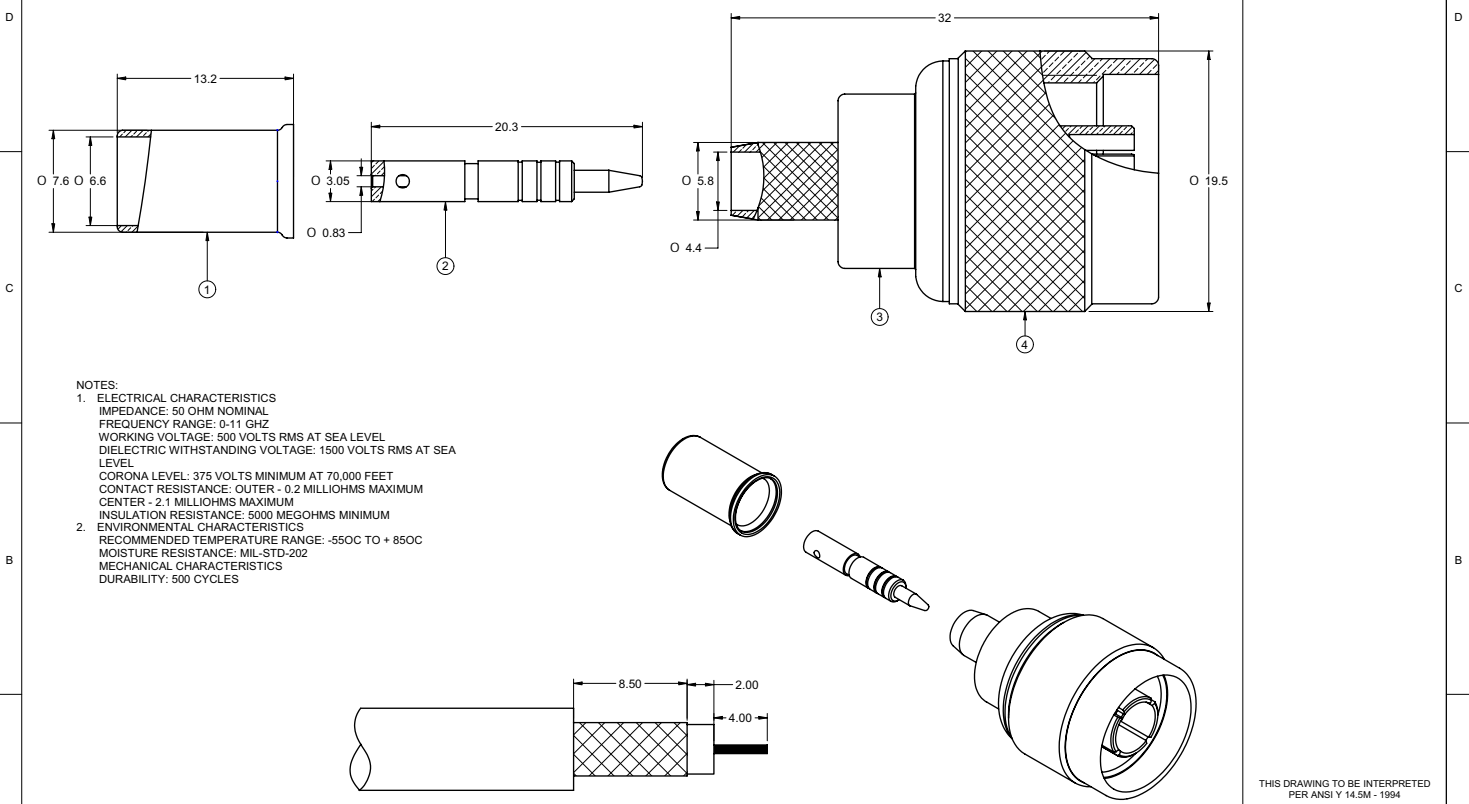


5	4	3	2	1
PART NUMBER	ITEM ① CRIMP SLEEVE	ITEM ② CONTACT	ITEM ③ BODY	ITEM ④ CUPLING NUT
CPN-2	BRASS NICKEL PLATED	BRASS Ni/Au PLATED	BRASS NICKEL PLATED	BRASS NICKEL PLATED

<b>受控 CONTROLLED DOCUMENT</b>			
编号 P/N	版本 Rev	日期 Rel'd Date	May24.08
CPN-2	0A	May24.08	

DRAWING NO. CPN-2	
REVISIONS	
RELEASE FOR QUOTATION	
A	09-26-05



NOTES:  
 1. ELECTRICAL CHARACTERISTICS  
 IMPEDANCE: 50 OHM NOMINAL  
 FREQUENCY RANGE: 0-11 GHZ  
 WORKING VOLTAGE: 500 VOLTS RMS AT SEA LEVEL  
 DIELECTRIC WITHSTANDING VOLTAGE: 1500 VOLTS RMS AT SEA LEVEL  
 CORONA LEVEL: 375 VOLTS MINIMUM AT 70,000 FEET  
 CONTACT RESISTANCE: OUTER - 0.2 MILLIOHMS MAXIMUM  
 CENTER - 2.1 MILLIOHMS MAXIMUM  
 INSULATION RESISTANCE: 5000 MEGOHMS MINIMUM  
 2. ENVIRONMENTAL CHARACTERISTICS  
 RECOMMENDED TEMPERATURE RANGE: -55OC TO + 85OC  
 MOISTURE RESISTANCE: MIL-STD-202  
 MECHANICAL CHARACTERISTICS  
 DURABILITY: 500 CYCLES

**CABLE STRIP DIMENSIONS**  
 ASSEMBLY INSTRUCTIONS ON SHEET 2

THIS DRAWING TO BE INTERPRETED  
 PER ANSI Y 14.5M - 1994

**COMPANY CONFIDENTIAL**

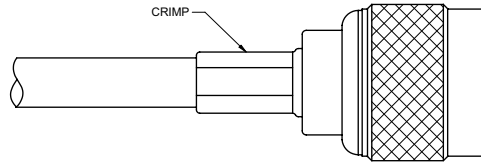
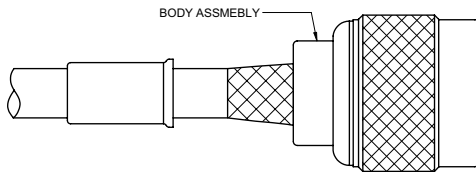
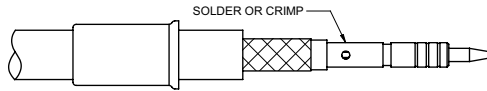
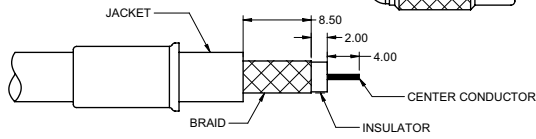
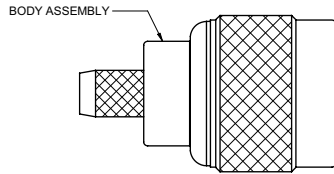
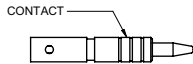
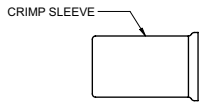
TOLERANCE UNLESS OTHERWISE SPECIFIED)	DRAWN BY IVON.WANG	DATE 09-22-05
DECIMALS	CHECKED BY LINDA	DATE 09-26-05
X ± 0.5	APPROVED BY THOMAS	DATE 09-26-05
XX ± 0.2		
XXX ± 0.1		
ANGLES ± 0.5°	U/M	mm
THIS DRAWING WAS PRODUCED BY COMPUTER, DO NOT SCALE DRAWING OR UPDATE MANUALLY.		

<b>EMERSON</b> Network Power	<b>Connectivity Solutions</b>	
	TITLE N-3PC. CRIMP PLUG-RG59	
SHEET 1 OF 2	DRAWING NO. CPN-2	SIZE C

5	4	3	2	1			
PART NUMBER	CABLE	WIRE GAUGE	WIRE DECIMAL	JACKET O.D.	HEX SIZE	CONTACT CRIMP HEX	RECOMMENDED CRIMP TOOL
CPN-2	RG59,62	22	6.43	5.59 - 6.35	6.48	2.54	24-312

<b>受控 CONTROLLED DOCUMENT</b>			
编号 P/N	CPN-2	版本 Rev	0A
日期 Rel'd Date	May24,08		

DRAWING NO. CPN-1			
REVISIONS			
RELEASE FOR QUOTATION			
A	09-26-05	W	L



**ASSEMBLY INSTRUCTIONS**

1. IDENTIFY CONNECTOR PARTS. (3 PIECE PARTS)
2. STRIP CABLE TO DIMENSIONS SHOWN. DO NOT NICK BRAID OR CENTER CONDUCTOR. SLIDE THE CRIMP SLEEVE ONTO THE JACKET; CRIMP NARROW END FIRST.
3. CRIMP AND SOLDER THE CONTACT ONTO THE CENTER CONDUCTOR USING THE RECOMMENDED CRIMP HEX OR THE MINIMUM AMOUNT OF SOLDER FOR A GOOD JOINT. NOTE: CONTACTS MAY NEED TO BE PRE-FIT ONTO THE CENTER CONDUCTOR AND SOLDERED THROUGH THE HOLE.
4. FLARE THE BRAID AND SLIDE THE CONNECTOR BODY OVER THE CONTACT AND UNDER THE BRAID. THEN SEAT THE BODY FIRMLY ONTO THE CONTACT. THE CABLE MAY NEED TO BE HELD IN A CLAMPING FIXTURE. ARRANGE THE BRAID UNIFORMLY AROUND THE CRIMP STEM, THEN SLIDE THE CRIMP SLEEVE FORWARD TO THE BODY AND CRIMP THE SLEEVE USING THE RECOMMENDED CRIMP HEX.

THIS DRAWING TO BE INTERPRETED PER ANSI Y 14.5M - 1994

**COMPANY CONFIDENTIAL**

TOLERANCE UNLESS OTHERWISE SPECIFIED		DRAWN BY	DATE
DECIMALS	mm	IVON.WANG	09-22-05
X	± 0.5	CHECKED BY	DATE
X.X	± 0.2	LINDA	09-26-05
XXX	± 0.1	APPROVED BY	DATE
ANGLES	± 0.5°	THOMAS	09-26-05
	UM		
THIS DRAWING WAS PRODUCED BY COMPUTER, DO NOT SCALE DRAWING OR UPDATE MANUALLY.			

<b>EMERSON</b> Network Power		<b>Connectivity Solutions</b>	
TITLE			
N-3PC. CRIMP PLUG-RG58			
SHEET	DRAWING NO.	SIZE	
2 OF 2	CPN-2	C	

5

4

3

2

1