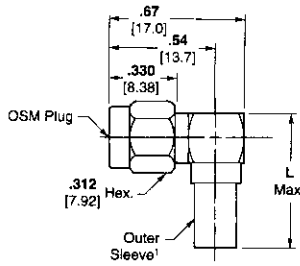
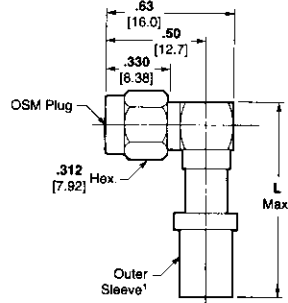


### SMA Connectors MIL-C-39012 — For Flexible Cable (Continued)

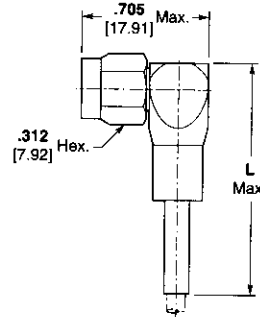
#### MIL-C-39012/56



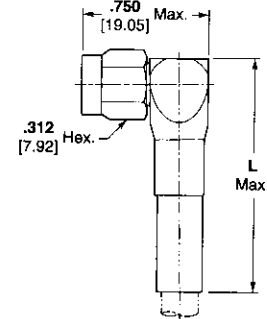
Outline 1



Outline 2



Outline 3



Outline 4

Military Part No.	AMP Part No.	M/A-COM <sup>®</sup> Part No. (Ref. Only)	Outline	Cat. <sup>1</sup>	RG/U Cable	Dim. L
-3006	1052149-1	2037-8006-92	1	A	178	1.125 [28.58]
-3007	1052151-1	2037-8007-92	1	A	174, 316	1.125 [28.58]
-3008	1052152-1	2037-8008-92	1	A	122	1.125 [28.58]
-3009	1052154-1	2037-8009-92	1	A	58, 142, 223	1.125 [28.58]
-3010	1052155-1	2037-8010-92	1	A	303	1.125 [28.58]
B3011	1052156-1	2037-8011-92	1	B	178	1.250 [31.75]
B3012	1052157-1	2037-8012-92	1	B	174, 316	1.250 [31.75]
B3013	1052158-1	2037-8013-92	1	B	122	1.250 [31.75]
B3014	1052159-1	2037-8014-92	1	B	58	1.250 [31.75]
B3015	1052160-1	2037-8015-92	1	B	142	1.250 [31.75]
B3016	1052161-1	2037-8016-92	1	B	223	1.250 [31.75]
B3017	1052162-1	2037-8017-92	1	B	303	1.250 [31.75]
B3018	1052163-1	2037-8018-92	1	B	178	1.375 [34.93]
B3019	1052165-1	2037-8019-92	1	B	174, 316	1.375 [34.93]
B3019	225609-4 <sup>2</sup>	—	3	B	174, 188, 188A, 316	1.187 [30.15]
B3020	1052166-1	2037-8020-92	1	B	122	1.375 [34.93]
B3021	1052167-1	2037-8021-92	1	B	58	1.375 [34.93]
B3021	225609-1 <sup>2</sup>	—	4	B	58, 58A, 58B, 58C	1.250 [31.75]
B3022	1052168-1	2037-8022-92	1	B	142	1.375 [34.93]
B3022	225609-3 <sup>2</sup>	—	4	B	142, 142A, 142B, 400, Belden 84142	1.250 [31.75]
B3023	1052169-1	2037-8023-92	1	B	223	1.375 [34.93]
B3024	1052170-1	2037-8024-92	1	B	303	1.375 [34.93]
-3025	1052171-1	2037-8025-92	1	C	178	1.375 [34.93]
-3026	1052173-1	2037-8026-92	1	C	174, 316	1.375 [34.93]
-3027	1052174-1	2037-8027-92	1	C	122	1.375 [34.93]
-3028	1052176-1	2037-8028-92	1	C	142, 223	1.375 [34.93]

Military Part No.	AMP Part No.	M/A-COM <sup>®</sup> Part No. (Ref. Only)	Outline	Cat. <sup>1</sup>	RG/U Cable	Dim. L
-3029	1052177-1	2037-8029-92	1	C	58, 303	1.375 [34.93]
*-3106	1052179-1	2037-8106-92	1	A	178	1.125 [28.58]
*-3107	1052181-1	2037-8107-92	1	A	174, 316	1.125 [28.58]
*-3108	1052182-1	2037-8108-92	1	A	122	1.125 [28.58]
*-3109	1052184-1	2037-8109-92	1	A	58, 142, 223	1.125 [28.58]
*-3110	1052185-1	2037-8110-92	1	A	303	1.125 [28.58]
*B3111	1052186-1	2037-8111-92	1	B	178	1.250 [31.75]
*B3112	1052187-1	2037-8112-92	1	B	174, 316	1.250 [31.75]
*B3113	1052188-1	2037-8113-92	1	B	122	1.250 [31.75]
*B3114	1052189-1	2037-8114-92	1	B	58	1.250 [31.75]
*B3115	1052190-1	2037-8115-92	1	B	142	1.250 [31.75]
*B3116	1052191-1	2037-8116-92	1	B	223	1.250 [31.75]
*B3117	1052192-1	2037-8117-92	1	B	303	1.250 [31.75]
*B3118	1052193-1	2037-8118-92	1	B	178	1.375 [34.93]
*B3119	1052194-1	2037-8119-92	1	B	174, 316	1.375 [34.93]
*B3120	1052195-1	2037-8120-92	1	B	122	1.375 [34.93]
*B3121	1052196-1	2037-8121-92	1	B	58	1.375 [34.93]
*B3122	1052197-1	2037-8122-92	1	B	142	1.375 [34.93]
*B3123	1052198-1	2037-8123-92	1	B	223	1.375 [34.93]
*B3124	1052199-1	2037-8124-92	1	B	303	1.375 [34.93]
*-3125	1052201-1	2037-8125-92	1	C	178	1.375 [34.93]
*-3126	1052203-1	2037-8126-92	1	C	174, 316	1.375 [34.93]
*-3127	1052204-1	2037-8127-92	1	C	122	1.375 [34.93]
*-3128	1052206-1	2037-8128-92	1	C	142, 223	1.375 [34.93]
*-3129	1052207-1	2037-8129-92	1	C	58, 303	1.375 [34.93]
-3502	1052178-1	2037-8052-92	2	D	142, 400	1.375 [34.93]
*-3602	1086723-1	2037-8162-92	2	D	142, 400	1.375 [34.93]

\* No safety wire holes.

<sup>1</sup> Category A: solder sleeve; Categories B, C and D: crimp sleeve.

<sup>2</sup> Use Integral Crimp Tool Part Number 220061-1.

<sup>3</sup> -92 indicates passivated stainless steel finish.

See page 7003 for description of categories and pages 7059-7064 for tooling (unless noted otherwise).