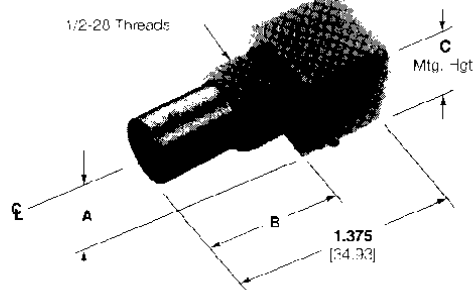


BNC Connectors, 75 Ohm (Continued)

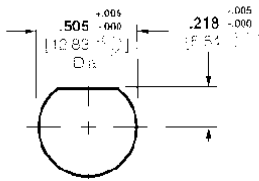
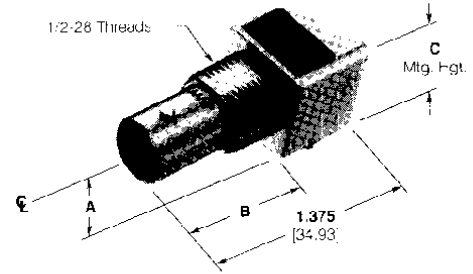
Right-Angle PC Board/Panel Mount Jacks

Outer Shell — Nicke
Dielectric — Polymethylpentene
Contact — See Charts
Lockwasher and Jam Nut see page 49.

VALDX Body

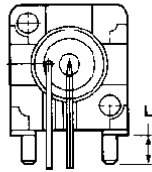


Metal Body



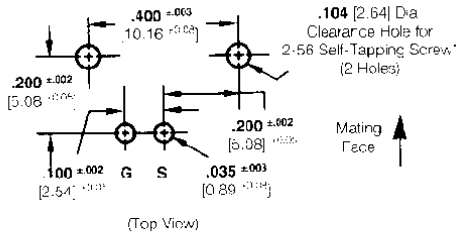
Maximum Panel Thickness .240 [6.1]

Recommended Panel Cutout

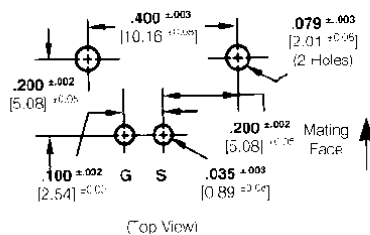


Recommended PC Board Layouts

Without Mounting Posts



With Mounting Posts



* Screw for panel thickness of 3/32 [2.38] or greater

Part No. 221108-2.

Screw for panel thickness of less than 3/32 [2.38]

Part No. 221108-4.

Body Material	Center Contact Plating	Dimensions				Part Number
		A	B	C	L	
VALOX, White	Gold ¹	.272 6.91	.830 21.08	.519 13.18	.137 3.48	413194-1
VALOX, Black	Gold ¹	.272 6.91	.830 21.08	.519 13.83	.137 3.48	413194-2
**VALOX, Black (Economy)	Gold1	.272 6.91	.835 21.21	.519 13.83	.137 3.48	415634-1
	Gold1	.338 8.59	.835 21.21	.625 15.83	.137 3.48	415633-1
VALOX, White	Gold2	.338 8.59	.835 21.21	.625 15.83	.137 3.48	414459-1
Metal	Gold1	.325 8.25	.820 20.83	.625 15.88	.085 2.16	222092-1
Metal	Gold1	.325 8.25	.820 20.83	.625 15.88	—	222093-1*
**Metal (Economy)	Gold1	.325 8.25	.820 20.83	.625 15.88	.137 3.48	414409-1
	Gold1	.325 8.25	.820 20.83	.625 15.88	—	414410-1
Metal with Compliant Posts	Gold1	.272 6.91	.820 20.83	.500 12.70	.137 3.48	415477-1
	Tin-Lead	.337 8.56	.835 21.21	.625 15.88	.137 3.48	415499-1
—	Silver	.325 8.25	.820 20.83	.625 15.88	.085 2.16	222092-2
Metal	Gold1	.325 8.25	.820 20.83	.625 15.88	.137 3.48	222092-3
Metal	Silver	.325 8.25	.820 20.83	.625 15.88	—	222093-2*
Metal	Gold1	.272 6.91	.820 20.83	.500 12.70	.137 3.48	414907-1

Plating:

Gold1 — .000030 [0.00076] thick

Gold2 — .000050 [0.00127] thick

* Without mounting posts

** Stamped and formed contact. Phosphor Bronze contact material

Note: If an Insulating Bushing is required see part number 330620 and Panel Cutout on page 30.

Phosphor Bronze contact material