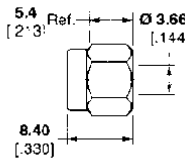
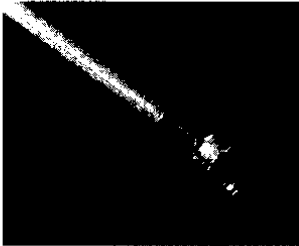




RF Coax Connectors

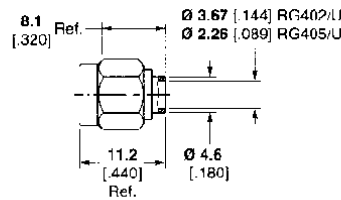
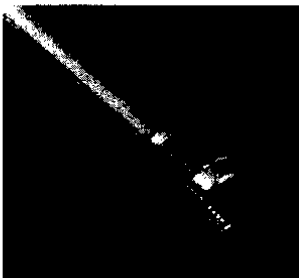
SMA Connectors (Continued)
Direct Solder Attachment, Semi-Rigid Cable

Straight Cable Plug



Cable Type RG/U	Body Material & Finish	Contact Captivation	Contact Attachment	Solder Assembly Kit Part No.	Instruction Sheet	M/A-COM Model No.	Part No.
402 (3.58 [.141])	Stainless, Pass.	No Center Contact	No Center Contact	1055420-1	408-4761	2001-7941-02	1050757-1

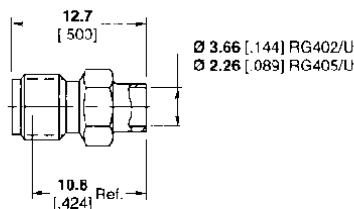
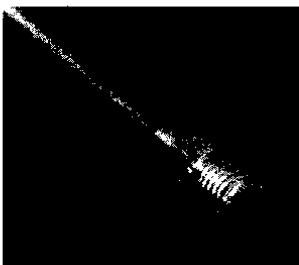
Straight Cable Plug



Cable Type RG/U	Body Material & Finish	Contact Captivation	Contact Attachment	Solder Assembly Kit Part No.	Instruction Sheet	M/A-COM Model No.	Part No.
402 (3.58 [.141])	Stainless, Gold ¹	No	Solder	1055420-1	408-4764	2001-5003-02	1050625-1
405 (2.16 [.085])	Stainless, Gold ¹	No	Solder	1055420-1	408-4765	2001-7985-02	1050770-1
405 (2.16 [.085])	Brass, Gold	No	Solder	1055420-1	408-4765	2201-7985-09	1091921-1
402 (3.58 [.141])	Stainless, Gold ¹	No Center Contact	No Center Contact	N/A	—	2001-5031-02	1050542-1
405 (2.16 [.085])	Stainless, Gold ¹	No	Solder	1055420-1	—	2001-5032-02	1050548-1

¹Coupling nut is passivated stainless steel.

Straight Cable Jack



Cable Type RG/U	Body Material & Finish	Contact Captivation	Contact Attachment	Solder Assembly Kit Part No.	Instruction Sheet	M/A-COM Model No.	Part No.
402 (3.58 [.141])	Stainless, Gold	No	Solder	1055420-1	408-4767	2002-5015-00	1050854-1
405 (2.16 [.085])	Stainless, Gold	No	Solder	1055420-1	408-4833	2002-5016-00	1050859-1