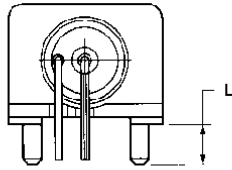


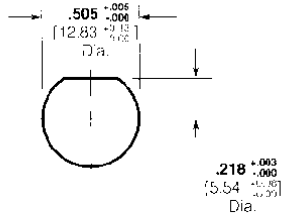
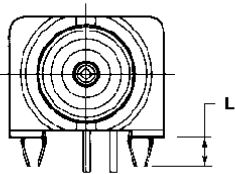
### Right-Angle PC Board/Panel Mount Jacks

**Plating**  
**Body**—Nickel  
**Center Contact**—See chart  
**Dielectric**—Polymethyl Pentene  
**Lockwasher and Jam Nut** see page 35.

#### Mounting Post Style



#### Compliant Post

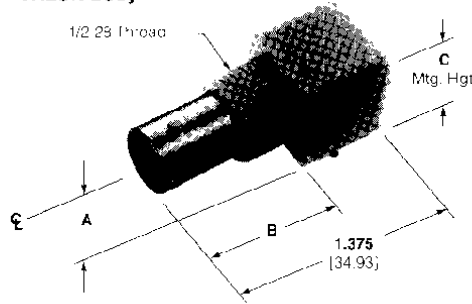


Maximum Panel Thickness: .240 [6.1]

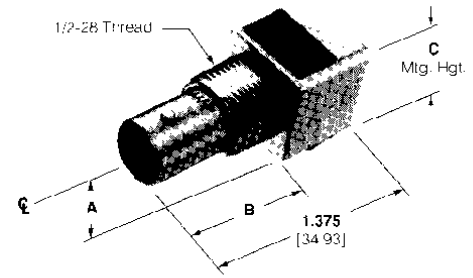
#### Recommended Panel Cutout

## BNC Connectors, 50 Ohm (Continued)

### VALOX Body



### Metal Body



Body Material	Center Contact Plating	Dimensions			Part Numbers				
		A	B	C	Without Mounting Posts	With Mounting Posts	L	With Compliant Posts	E
VALOX, White	Tin-Lead	.338 8.59	.835 21.21	.625 15.88	226990-1	227161-1	.137 3.48	—	—
	Gold1	.338 8.59	.835 21.21	.625 15.88	226990-3	227161-3	.137 3.48	—	—
	Gold1	.272 6.91	.835 21.21	.519 13.18	—	227161-7	.137 3.48	414684-1	.185 4.70
	Gold2	.272 6.91	.835 21.21	.519 13.18	—	1-227161-4	—	—	—
	Gold3	.272 6.91	.835 21.21	.519 13.18	—	415082-1	—	—	—
	Tin-Lead	.272 6.91	.835 21.21	.519 13.18	226990-7	—	—	—	—
VALOX, Black	Tin-Lead	.338 8.59	.835 21.21	.625 15.88	226990-2	227161-2	.137 3.48	—	—
	Gold1	.338 8.59	.835 21.21	.625 15.88	226990-6	227161-6	.137 3.48	—	—
	Gold1	.272 6.91	.835 21.21	.519 13.18	—	227161-9	.137 3.48	415218-1	.110 2.79
Metal	Tin-Lead	.325 8.26	.820 20.83	.625 15.88	227433-1	227561-1	.137 3.48	—	—
	Gold1	.325 8.26	.820 20.83	.625 15.88	227576-1	227577-1	.137 3.48	222785-1	.153 3.89
	Gold1	.272 6.91	.820 20.83	.500 12.70	—	413879-1	.137 3.48	—	—
	Gold2	.272 6.91	.820 20.83	.500 12.70	—	413879-2	.137 3.48	—	—
High Temp. Housing	Gold1	.272 6.91	.835 21.21	.519 13.18	—	1-227161-3*	—	—	—

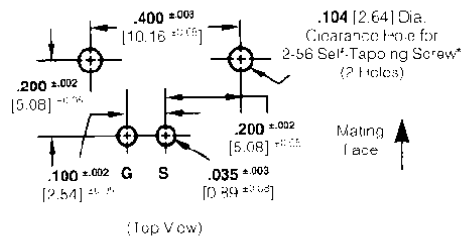
#### Plating:

Gold 1— .000030 [0.00076] thick  
 Gold 2— .000050 [0.00127] thick  
 Gold 3— .000003 [0.00008] thick

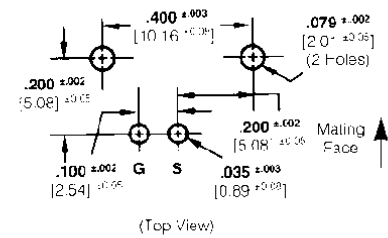
**Note:** If an Insulating Bushing is required see part number 330620 and Panel Cutout on page 30.

\*IR reflow compatible

#### Without Mounting Posts



#### With Mounting Posts



\* Screw for panel thickness of 3/32 [2.38] or greater  
**Part No. 221108-2.**  
 Screw for panel thickness of less than 3/32 [2.38]  
**Part No. 221108-4.**

#### Recommended PC Board Layouts