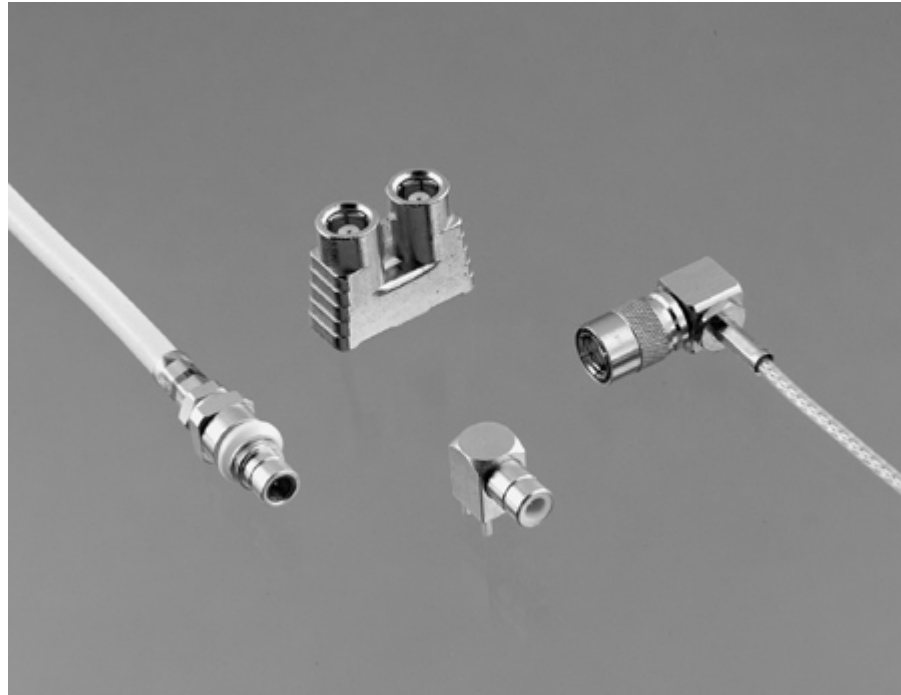


Search: [Products](#)[Catalogs](#)[Search](#)[Customer Support](#)[About Cannon](#)**Type 43 (SMZ)**

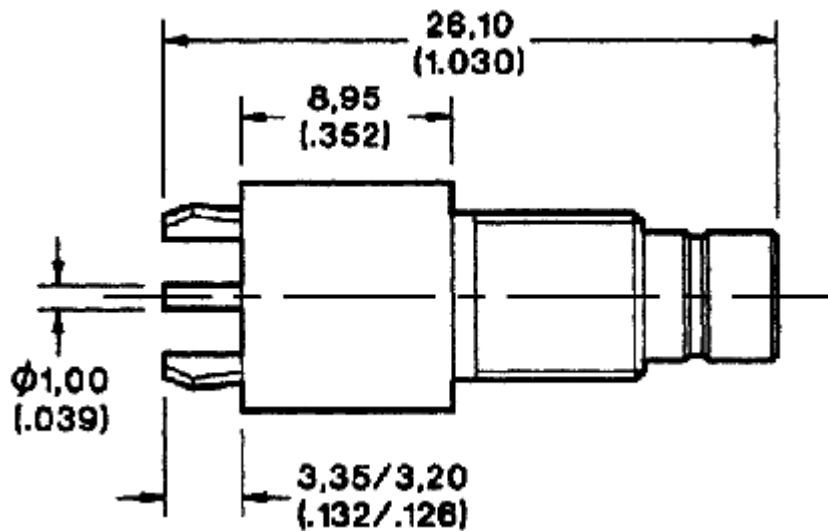
PART NUMBER: 051-151-9079A9A

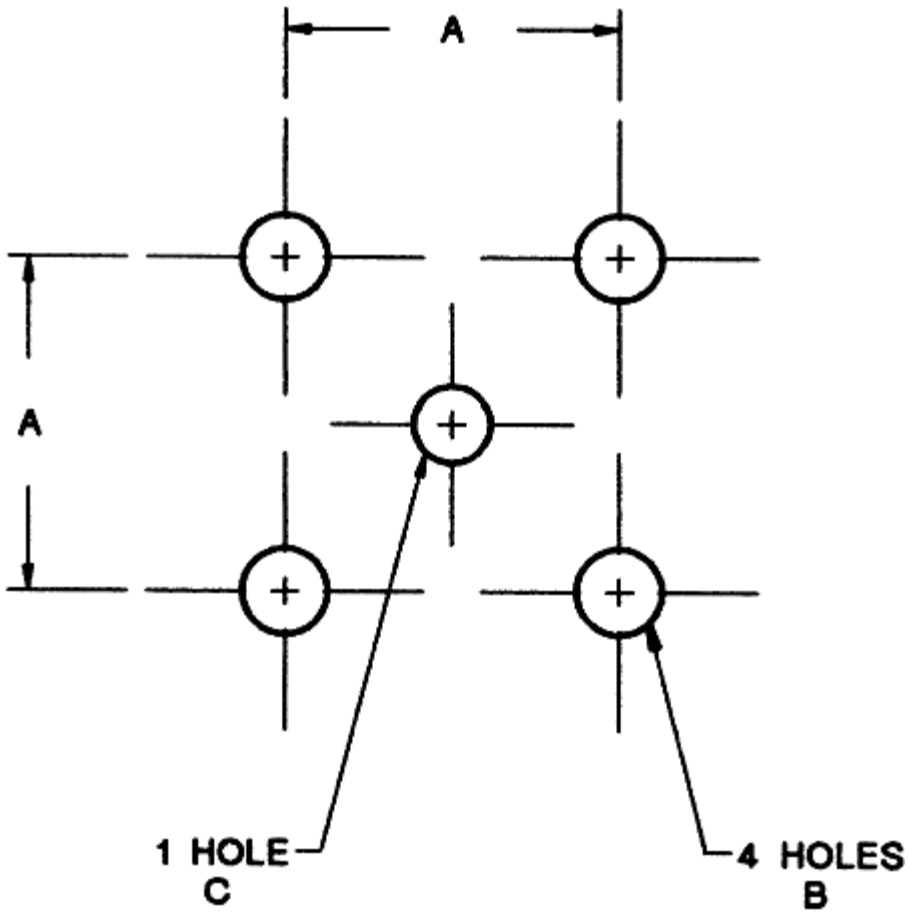
Image Disclaimer:
Please use Customer
Drawing for design activity:
line art and other pictures
are general representations
of product dimensions.

[View Line Drawings](#)[Sales](#)[Ask a](#)[Prod](#)[Stoc](#)[PRI](#)

Product Family	RF
Product Group	RF - Type 43 (SMZ)
Market Application	Telecom
Component Type	Printed Circuit Board Connectors
Gender	Plug
Mounting Style	Straight PCB
Packaging Type	Pack of 100
Plating	Center contact: Gold. Outer contacts: Gold. Other metal parts: Nickel, tin/lead, or zinc.
Product Description	Straight Bulkhead PCB Jack
Connector Durability	250 mating cycles minimum
Contact Current Rating	1.5 A DC maximum
Insulation Resistance	5 G ohms minimum
Reflection Coefficient	Refer to CECC122300
Shock	490 m/S ² for 11ms
Operating Voltage	(DC or AC peak) At Sea Level, inner conductor to shell = 500 V
Impedance	75 ohms
Frequency Range 1	0 to 3.0 GHz
Contact Resistance	Center contact = 5.0 m ohms maximum Outer contact = 1.0 m ohms maximum
	Body components: Copper or zinc alloy. Center

Material	contacts, male/female: Copper alloy. Insulators: PTFE or thermoset plastic. Crimp ferrules: Annealed copper alloy.
Contact Retention	21 N (4.7 lbs.)
Insulation Retention	21 N (4.7 lbs.)
Vibration Severity	(a) Frequency range: 10 Hz to 500 Hz. (b) Displacement 0,75 (.029), cross over at approximately 60 Hz. (c) Acceleration 98 m/s ² (321 ft./s ²), cross over at approximately 60 Hz. (d) Duration: 6 hours.
Impact Severity (Free specimens only)	5 impacts at 1 m
Climatic Category	40/100/21
Bump	4000 total at 390 m/s ²
Mounting Information	Mounting Plan A
For more information	Please Contact Cannon Sales Department .
Mounting Dimension A	5,08 (.200)
Mounting Dimension B	4X 067.-080.) 1,70-1,85±) minimum
Mounting Dimension C	1X 046.-053.) 1,17-1,35±) minimum
Footnote	Dimension are shown in mm (inch). Dimensions subject to change.





[Sign In](#) | [Contact Us](#) | [Legal Disclaimer](#) | [Privacy Policy](#) | [Home](#)
© 2006 ITT Industries