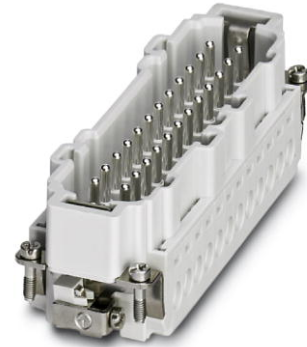



HC-B 24-I-UT-M-48

Order No.: 1584936



<http://eshop.phoenixcontact.de/phoenix/treeViewClick.do?UID=1584936>

HEAVYCON female insert, B24 series, 24-pos., 25 ... 48 color print, screw connection. PE connection using tension sleeve technology.

| Commercial data | |
|--------------------------|--|
| GTIN (EAN) |  4 046356 156141 |
| sales group | D001 |
| Pack | 10 pcs. |
| Customs tariff | 85366990 |
| Catalog page information | Page 427 (PC-2009) |

Product notes

WEEE/RoHS-compliant since:
01/10/2008



<http://www.download.phoenixcontact.com>
Please note that the data given here has been taken from the online catalog. For comprehensive information and data, please refer to the user documentation. The General Terms and Conditions of Use apply to Internet downloads.

Technical data

| General data | |
|-------------------|--|
| Note | For HEAVYCON-ADVANCE of B24 type and HEAVYCON housing of B24/B48 type Plug-in connections may only be operated only when there is no load/voltage. |
| Connection method | Screw connection |
| Tightening torque | 0.5 Nm ... 0.8 Nm |

| | |
|---|--|
| Ambient temperature (operation) | -40 °C ... 125 °C (including heating up of contacts) |
| Pollution degree | 3 |
| Surge voltage category | III |
| Constructional and testing regulations | DIN EN 61984 DIN EN 60664 IEC 60352 |
| Number of positions | 24 |
| Insertion/withdrawal cycles | ≥ 500 |
| Design | B24 |
| Connection in acc. with standard | IEC / EN |
| Conductor cross-section | 0.5 mm ² ... 2.5 mm ² |
| Connection cross-section AWG | 20 ... 14 |
| Stripping length of the individual wire | 8 mm |
| Assembly instructions | Coding also using the CP-HC (1686478) coding profiles. HC-B6../ HC-B10..for two coding profiles. HC-B16../ HC-B24..for four coding profiles. |
| Connection | Connectors may only be actuated when there is no load/voltage. |

Material data

| | |
|------------------------------------|--------------|
| Inflammability class acc. to UL 94 | V0 |
| Contact material | Copper alloy |
| Contact surface material | Ag |
| Contact carrier material | PA |

Electrical characteristics

| | |
|-----------------------|-------|
| Rated voltage (III/3) | 500 V |
| Rated surge voltage | 6 kV |
| Rated current | 16 A |

Certificates / Approvals



Certification

CSA, CUL, UL

Accessories

Item Designation Description

General

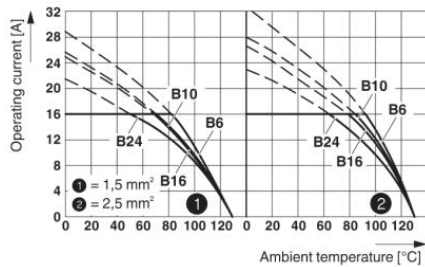
| | | |
|---------|--------------------|--|
| 1586141 | HC-B 24-ANDOCK | Docking frame for racks, for contact inserts of B24 type, with four M5 flat headed screws, rack balance x/y axis +- 1.5 mm |
| 1644326 | HC-B-3PE | PE multiplier, for three PE connections, for HC-B (besides HC-B..E..ZZ) / HC-BB / HC-DD / HC-D40 / HC-D64 contact inserts |
| 1604997 | HC-B-PES | PE screw, for contact inserts HC-B / HC-BB / HC-DD / HC-D40 / HC-D64 |
| 1685327 | HC-B-ZG | Strain relief clamps contact inserts of series: B-, BB-, D 40, D 64, DD and HV, straight cable exit |
| 1685330 | HC-B-ZS | Strain relief clamps contact inserts of series: B-, BB-, D 40, D 64, DD and HV, lateral cable exit |
| 1772722 | HC-CB | Coding pin, prevents mismatching of up to six plug connectors with an identical number of positions |
| 1676860 | HC-CBU | Keying socket for coding up to 16 plug connectors |
| 1676857 | HC-CST | Keying peg for coding up to 16 plug connectors |
| 1660944 | HC-SMP 150-B24-AMQ | HEAVYCON connector assembly frame with panel mounting base with double locking latch, for contact inserts of type B24 |
| 1687985 | HC-SMR-B24 | HEAVYCON connector assembly frame, for contact inserts of type B24 |

Plug/Adapter

| | | |
|---------|-------|--|
| 1686478 | CP-HC | Keying profile, 4-section, for pushing into the keying grooves |
|---------|-------|--|

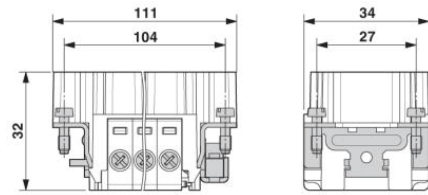
Diagrams/Drawings

Diagram

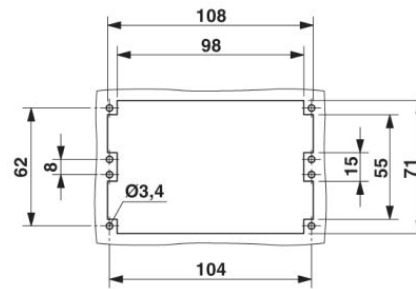


Derating diagram

Dimensioned drawing



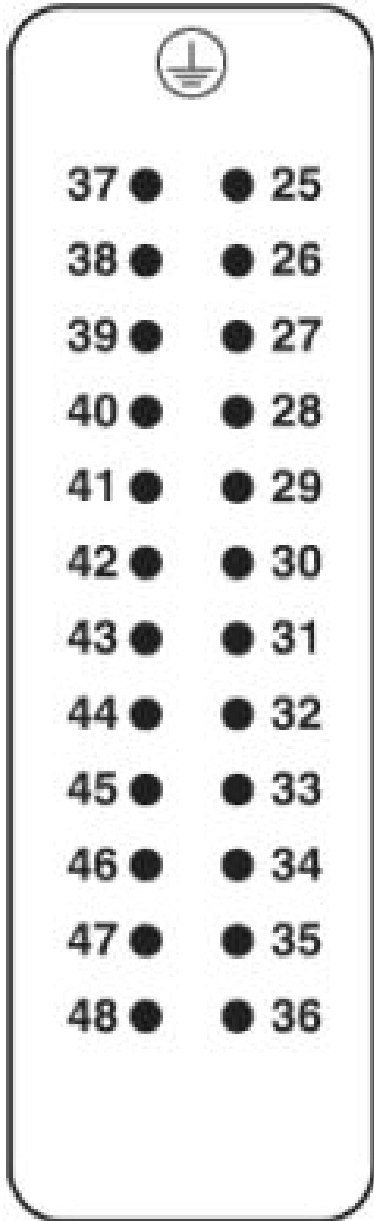
Male insert



Panel cutout

Schematic diagram

Connector pin assignment, connection side



Address

PHOENIX CONTACT Inc., USA
586 Fulling Mill Road
Middletown, PA 17057, USA
Phone (800) 888-7388
Fax (717) 944-1625
<http://www.phoenixcon.com>



© 2010 Phoenix Contact
Technical modifications reserved;