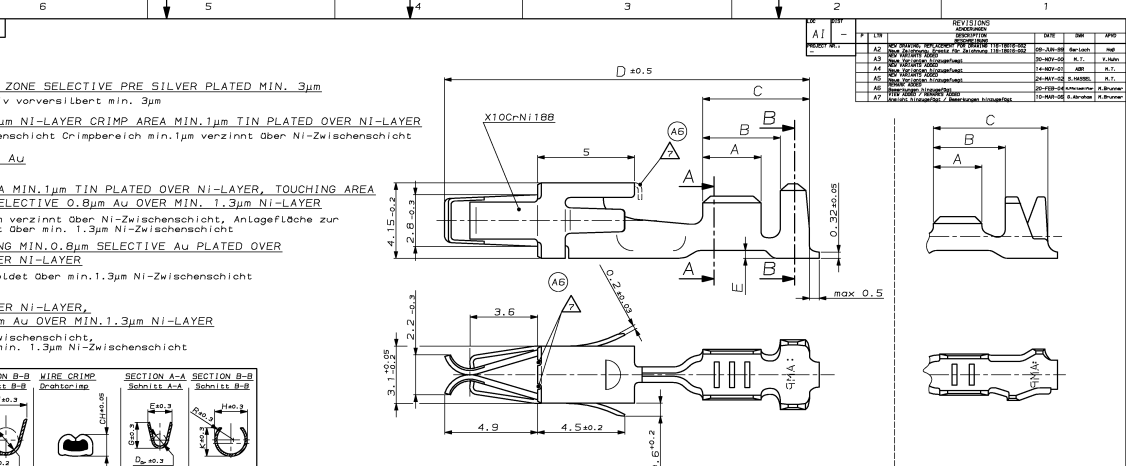


- REMARKS**
 Bemerkungen
- CONTACT BODY PRE SILVER PLATED MIN. 0.8µm CONTACT ZONE SELECTIVE PRE SILVER PLATED MIN. 3µm
 Kontaktkörper vorversilbert min. 0.8µm Kontaktzone selektiv vorversilbert min. 3µm
 - CONTACT ZONE GOLD PLATED MIN. 0.8µm OVER MIN. 1.3µm NI-LAYER CRIMP AREA MIN. 1µm TIN PLATED OVER NI-LAYER
 Kontaktzone vergoldet min. 0.8µm über min. 1.3µm Ni-Zwischenschicht Crimpbereich min. 1µm verzinkt über Ni-Zwischenschicht
 - CANTILEVER SPRING INSIDE AND OUTSIDE 0.4-1.2µm Au
 Oberfeder innen und außen 0.4-1.2µm Au
 - CONTACT BODY, CONTACT SPRING INSIDE AND CRIMP AREA MIN. 1µm TIN PLATED OVER NI-LAYER, TOUCHING AREA TO CANTILEVER SPRING AND CONTACT SPRING OUTSIDE SELECTIVE 0.8µm Au OVER MIN. 1.3µm NI-LAYER
 Kontaktkörper, Kontaktfeder innen und Crimpbereich min. 1µm verzinkt über Ni-Zwischenschicht, Anlagefläche zur Oberfeder und Kontaktfeder aussen selektiv 0.8µm vergoldet über min. 1.3µm Ni-Zwischenschicht
 - CONTACT ZONE AND TOUCHING AREA TO CANTILEVER SPRING MIN. 0.8µm SELECTIVE Au PLATED OVER 1.3µm NI PLATED, CRIMP AREA MIN. 1µm TIN PLATED OVER NI-LAYER
 Kontaktzone und Anlagefläche zur Oberfeder min. 0.8µm vergoldet über min. 1.3µm Ni-Zwischenschicht Crimpbereich min. 1µm verzinkt über Ni-Zwischenschicht
 - CONTACT BODY AND CRIMP AREA MIN. 1µm TIN PLATED OVER NI-LAYER, TOUCHING AREA TO CANTILEVER SPRING SELECTIVE 0.8µm Au OVER MIN. 1.3µm NI-LAYER
 Kontaktkörper und Crimpbereich min. 1µm verzinkt über Ni-Zwischenschicht, Anlagefläche zur Oberfeder selektiv 0.8µm vergoldet über min. 1.3µm Ni-Zwischenschicht
 - CUT OFF OPTIONAL
 Abschnitt/Freisschnitt optional



REV.	DATE	BY	CHK	APP
A1	20.02.2010	J. Schmitt	J. Schmitt	J. Schmitt
A2	20.02.2010	J. Schmitt	J. Schmitt	J. Schmitt
A3	20.02.2010	J. Schmitt	J. Schmitt	J. Schmitt
A4	20.02.2010	J. Schmitt	J. Schmitt	J. Schmitt
A5	20.02.2010	J. Schmitt	J. Schmitt	J. Schmitt
A6	20.02.2010	J. Schmitt	J. Schmitt	J. Schmitt
A7	20.02.2010	J. Schmitt	J. Schmitt	J. Schmitt

ORDER-NO.	REV.	MATERIAL	SURFACE	DGB	SECTION A-A		SECTION B-B		WIRE CRIMP	WIRE CRIMP HEIGHT	SECTION A-A		SECTION B-B		APPLICATION TOOL	HAND TOOL	EXTRACTION TOOL	A	B	C	D	E
					E ± 0.3	G ± 0.3	H ± 0.3	K ± 0.3			D ± 0.3	E ± 0.3	G ± 0.3	H ± 0.3								
2-927773-1	P	2-9277781-1	CuSn4	FLK	E = 3.6	H = 5.5	1.25mm² = 1.44	E = 2.8	H = 4.2	MGC-Applicator	539635-1	3.3	4.3	5.8	18.8	0.4						
1-927773-1	P	1-9277781-1	CuFe2	FLK	G = 3.8	K = 5.8	1.5mm² = 1.51	G = 3.9	K = 5.2	539635-1	3.3	4.3	5.8	18.8	0.4							
927773-6	N	9277781-6	CuSn4	vorverzinkt	D _{cr} = 1.8	D = 3.6	2.0mm² = 1.64	D _{cr} = 1.7	r = 2.4	539674-2												
927773-3	N	9277781-3	CuFe2	vorverzinkt			2.5mm² = 1.77															
2-927768-1	R	2-927777-1	CuSn4	FLR	E = 3.6	H = 4.7	1.25mm² = 1.44	E = 2.8	H = 3.8	MGC-Applicator	539635-1	3.3	4.3	5.8	18.8	0.4						
1-927768-1	R	1-927777-1	CuFe2	FLR	G = 3.8	K = 4.9	1.5mm² = 1.51	G = 3.9	K = 4.3	539635-1	3.3	4.3	5.8	18.8	0.4							
927768-9	P	927777-9	CuSn4	vorverzinkt	D _{cr} = 1.8	D = 2.6	2.0mm² = 1.64	D _{cr} = 1.7	R = 2.3	539674-2												
927768-3	P	927777-3	CuFe2	vorverzinkt			2.5mm² = 1.77															
927768-1	P	927777-1	CuFe2	vorverzinkt																		
2-927771-2	N	2-927779-2	CuSn4	FLR	E = 2.6	H = 3.6	0.5mm² = 1.18	E = 2.2	H = 2.8	MGC-Applicator	539635-1	3	4	5.5	18.8	0.4						
1-927771-1	N	1-927779-1	CuFe2	FLR	G = 2.8	K = 3.9	0.75mm² = 1.27	G = 2.8	K = 3.4	539635-1	3	4	5.5	18.8	0.4							
927771-9	N	927779-9	CuSn4	vorverzinkt	D _{cr} = 1.1	D = 1.8	1.0mm² = 1.36	D _{cr} = 1.2	R = 1.6	539674-2												
927771-8	N	927779-8	CuSn4	vorverzinkt																		
927771-6	N	927779-6	CuSn4	vorverzinkt																		
927771-3	N	927779-3	CuFe2	vorverzinkt																		
927771-1	N	927779-1	CuFe2	vorverzinkt																		
2-927774-1	C	2-927776-1	CuSn4	FLR	E = 2.1	H = 2.7	0.2mm² = 0.98	E = 1.7	H = 2.2	MGC-Applicator	539635-1	2.5	3.5	5.6	18.8	0.4						
1-927774-1	C	1-927776-1	CuFe2	FLR	G = 2.1	K = 2.8	0.25mm² = 1.00	G = 2.1	K = 2.4	539635-1	2.5	3.5	5.6	18.8	0.4							
927774-8	B	927776-8	CuSn4	vorverzinkt	D _{cr} = 0.8	D = 1.4	0.35mm² = 1.05	D _{cr} = 0.8	R = 1.3	539737-2												
927774-3	B	927776-3	CuFe2	vorverzinkt			0.5mm² = 1.12															
927774-1	B	927776-1	CuFe2	vorverzinkt																		
2-963708-1	C	2-963777-1	CuSn4	FLR	E = 1.7	H = 3.1	0.08mm² = 0.79	E = 1.5	H = 2.5	MGC-Applicator	734414-1	2.5	3.7	5.9	18.8	0.4						
1-963708-1	C	1-963777-1	CuFe2	FLR	G = 1.7	K = 3.2	0.14mm² = 0.83	G = 1.8	K = 2.8	734414-1												
963708-8	B	963777-8	CuSn4	vorverzinkt	D _{cr} = 0.6	D = 1.6	0.22mm² = 0.87	D _{cr} = 0.6	R = 1.4	734414-1												
963708-3	B	963777-3	CuFe2	vorverzinkt																		
963708-1	B	963777-1	CuFe2	vorverzinkt																		

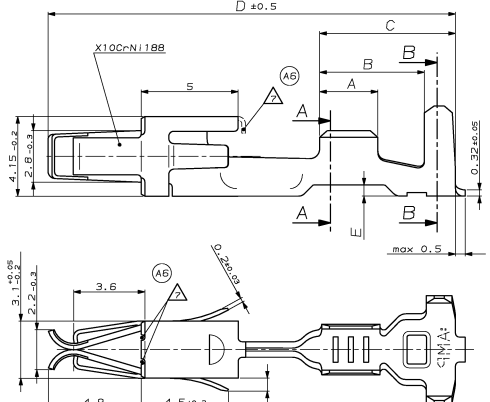
UNSEALD
 ungedichtet

THIS DRAWING IS NOT SUBJECT TO CONSTANT CHANGING SERVICE AND DOES NOT LAY CLAIM TO BE COMPLETE. FOR DEFINITE SPECIFICATION SEE RESPECTIVE AMP CUSTOMER DRAWINGS. FURTHER VERSIONS ON INQUIRY.
 Diese Zeichnung unterliegt nicht dem ständigen Änderungsdienst und erhebt keinen Anspruch auf Vollständigkeit. Verbindliche Angaben sind der jeweiligen AMP-Kundenzeichnung zu entnehmen. Weitere Ausführungen auf Anfrage.

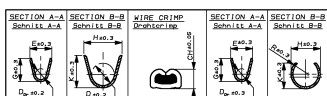
AMP DEUTSCHLAND GMBH 63225 LONGEN TEL: +49 69 30 00 00 FAX: +49 69 30 00 00 E-MAIL: AMP@AMP-DE.COM	G. Gerlach 07.10.2010 100-18013 100-18050 100-18050	AMP DEUTSCHLAND GMBH 0 - 63225 LONGEN PRODUCT GROUP DRAWING FOR JUNIOR POWER TINES CONTACT Produkt-Gruppen-Zeichnung fuer: JPT Kontakt THE DATE OF THIS DRAWING IS 1355046 A1 00779 (REPLACES 11E-1801E-002) CUSTOMER DRAWING / KUNDENZEICHNUNG 101 100 2 17 A7
--	---	---

REMARKS
 Bemerkungen

- 1 CONTACT BODY PRE SILVER PLATED MIN. 0.8µm CONTACT ZONE SELECTIVE PRE SILVER PLATED MIN. 3µm
 Kontaktkörper vorversilbert min. 0.8µm Kontaktzone selektiv vorversilbert min. 3µm
- 2 CONTACT ZONE GOLD PLATED MIN. 0.8µm OVER MIN. 1.3µm NI-LAYER CRIMP AREA MIN. 1µm TIN PLATED OVER NI-LAYER
 Kontaktzone vergoldet min. 0.8µm über min. 1.3µm Ni-Zwischenschicht Crimpbereich min. 1µm verzinkt über Ni-Zwischenschicht
- 3 CANTILEVER SPRING INSIDE AND OUTSIDE 0.4-1.2µm Au
 Oberfeder innen und außen 0.4-1.2µm Au
- 4 CONTACT BODY, CONTACT SPRING INSIDE AND CRIMP AREA MIN. 1µm TIN PLATED OVER NI-LAYER, TOUCHING AREA TO CANTILEVER SPRING AND CONTACT SPRING OUTSIDE SELECTIVE 0.8µm Au OVER MIN. 1.3µm NI-LAYER
 Kontaktkörper, Kontaktfeder innen und Crimpbereich min. 1µm verzinkt über Ni-Zwischenschicht, Anlagefläche zur Oberfeder und Kontaktfeder aussen selektiv 0.8µm vergoldet über min. 1.3µm Ni-Zwischenschicht
- 5 CONTACT ZONE AND TOUCHING AREA TO CANTILEVER SPRING MIN. 0.8µm SELECTIVE Au PLATED OVER 1.3µm Ni PLATED, CRIMP AREA MIN. 1µm TIN PLATED OVER NI-LAYER
 Kontaktzone und Anlagefläche zur Oberfeder min. 0.8µm vergoldet über min. 1.3µm Ni-Zwischenschicht Crimpbereich min. 1µm verzinkt über Ni-Zwischenschicht
- 6 CONTACT BODY AND CRIMP AREA MIN. 1µm TIN PLATED OVER NI-LAYER, TOUCHING AREA TO CANTILEVER SPRING SELECTIVE 0.8µm Au OVER MIN. 1.3µm NI-LAYER
 Kontaktkörper und Crimpbereich min. 1µm verzinkt über Ni-Zwischenschicht, Anlagefläche zur Oberfeder selektiv 0.8µm vergoldet über min. 1.3µm Ni-Zwischenschicht
- 7 CUT OFF OPTIONAL
 Abschnitt/Freischnitt optional



SINGLE WIRE SEAL
 Einzel-Dichtungs-System



AMP ORDER-No.	AMP ORDER-No.	MATERIAL	SURFACE	DBB	WIRE CRIMP	WIRE CRIMP	WIRE CRIMP	WIRE CRIMP	AMP ORDER-No.	AMP ORDER-No.	AMP ORDER-No.	AMP ORDER-No.	AMP ORDER-No.	AMP ORDER-No.	AMP ORDER-No.	AMP ORDER-No.	
1100	1100	1100	1100	1100	1100	1100	1100	1100	1100	1100	1100	1100	1100	1100	1100	1100	
2-927766-1	E 2-929929-1	CuSn4	vorversilbert	FLK	E = 3.6 H = 5.4 G = 3.8 K = 4.6 D _{cr} = 1.8	H = 5.4 D = 3.2	2.5mm ² = 1.77 2.0mm ² = 1.64 1.5mm ² = 1.51	E = 2.8 H = 4.8 G = 3.9 K = 4.2 D _{cr} = 1.7	MOC-Application 2-878845-2	539635-1 416 Material 539797-2	3.5	5.9	7.5	18.8	0.4	828905-1	828922-1
1-927766-1	E 1-929929-1	CuFe2	vorversilbert	FLR	E = 3.6 H = 5.4 G = 3.8 K = 4.6 D _{cr} = 1.8	H = 5.4 D = 3.2	2.5mm ² = 1.77 2.0mm ² = 1.64 1.5mm ² = 1.51	E = 2.8 H = 4.8 G = 3.9 K = 4.2 D _{cr} = 1.7	MOC-Application 2-878845-2	539635-1 416 Material 539797-2	3.5	5.9	7.5	21	0.4	828905-1	828922-1
2-929937-1	D 2-929936-1	CuSn4	vorversilbert	FLR	E = 2.6 H = 5.4 G = 2.8 K = 4.6 D _{cr} = 1.1	H = 5.4 D = 3.2	1.0mm ² = 1.36 0.75mm ² = 1.27 0.5mm ² = 1.18	E = 2.2 H = #4.6 G = 2.8 K = 4.2 D _{cr} = 1.2	MOC-Application 878335-2	539635-1 416 Material 539797-2	3	5.4	7	21	0.6	828904-1	828922-1
1-929939-1	D 1-929940-1	CuFe2	vorversilbert	FLR	E = 2.6 H = 5.4 G = 2.8 K = 4.6 D _{cr} = 1.1	H = 5.4 D = 3.2	1.0mm ² = 1.36 0.75mm ² = 1.27 0.5mm ² = 1.18	E = 2.2 H = #4.6 G = 2.8 K = 4.2 D _{cr} = 1.2	MOC-Application 878335-2	539635-1 416 Material 539797-2	3	5.4	7	18.8	0.6	828904-1	828922-1
2-927770-1	B 2-929930-1	CuSn4	vorversilbert	FLR	E = 2.1 H = 5.4 G = 2.1 K = 4.6 D _{cr} = 0.8	H = 5.4 D = 3.2	0.5mm ² = 1.12 0.35mm ² = 1.05 0.25mm ² = 1.0 0.2mm ² = 0.98	E = 1.7 H = 4.2 G = 2.1 K = 4.35 D _{cr} = 2.4	MOC-Application 878334-2	539635-1 416 Material 539797-2	2.5	4.9	6.5	21	0.9	828904-1	828922-1
1-927770-1	D 1-929930-1	CuFe2	vorversilbert	FLR	E = 2.1 H = 5.4 G = 2.1 K = 4.6 D _{cr} = 0.8	H = 5.4 D = 3.2	0.5mm ² = 1.12 0.35mm ² = 1.05 0.25mm ² = 1.0 0.2mm ² = 0.98	E = 1.7 H = 4.2 G = 2.1 K = 4.35 D _{cr} = 2.4	MOC-Application 878334-2	539635-1 416 Material 539797-2	2.5	4.9	6.5	18.8	0.9	828904-1	828922-1
2-929941-1	D 2-929942-1	CuSn4	vorversilbert	FLR	E = 2.1 H = 5.4 G = 2.1 K = 4.6 D _{cr} = 0.8	H = 5.4 D = 3.2	0.5mm ² = 1.12 0.35mm ² = 1.05 0.25mm ² = 1.0 0.2mm ² = 0.98	E = 1.7 H = 4.2 G = 2.1 K = 4.35 D _{cr} = 2.4	MOC-Application 878334-2	539635-1 416 Material 539797-2	2.5	4.9	6.5	18.8	0.9	828904-1	828922-1
1-927772-1	D 1-929931-1	CuFe2	vorversilbert	FLR	E = 2.1 H = 5.4 G = 2.1 K = 4.6 D _{cr} = 0.8	H = 5.4 D = 3.2	0.5mm ² = 1.12 0.35mm ² = 1.05 0.25mm ² = 1.0 0.2mm ² = 0.98	E = 1.7 H = 4.2 G = 2.1 K = 4.35 D _{cr} = 2.4	MOC-Application 878334-2	539635-1 416 Material 539797-2	2.5	4.9	6.5	18.8	0.9	828904-1	828922-1
2-927772-1	C 2-929931-1	CuSn4	vorversilbert	FLR	E = 2.1 H = 5.4 G = 2.1 K = 4.6 D _{cr} = 0.8	H = 5.4 D = 3.2	0.5mm ² = 1.12 0.35mm ² = 1.05 0.25mm ² = 1.0 0.2mm ² = 0.98	E = 1.7 H = 4.2 G = 2.1 K = 4.35 D _{cr} = 2.4	MOC-Application 878334-2	539635-1 416 Material 539797-2	2.5	4.9	6.5	18.8	0.9	828904-1	828922-1

THIS DRAWING IS NOT SUBJECT TO CONSTANT CHANGING SERVICE AND DOES NOT LAY CLAIM TO BE COMPLETE. FOR DEFINITE SPECIFICATION SEE RESPECTIVE AMP CUSTOMER DRAWINGS. FURTHER VERSIONS ON INQUIRY.
 Diese Zeichnung unterliegt nicht dem ständigen Änderungsdienst und erhebt keinen Anspruch auf Vollständigkeit. Verbindliche Angaben sind der jeweiligen AMP-Kundenzzeichnung zu entnehmen. Keine Ausführungen auf Anfrage.

<p>AMP ORDER-No. 1100</p>	<p>AMP ORDER-No. 1100</p>	<p>MATERIAL CuSn4</p>	<p>SURFACE vorversilbert</p>	<p>DBB FLR</p>	<p>WIRE CRIMP 2.5mm² = 1.77</p>	<p>WIRE CRIMP 2.0mm² = 1.64</p>	<p>WIRE CRIMP 1.5mm² = 1.51</p>	<p>WIRE CRIMP 1.0mm² = 1.36</p>	<p>AMP ORDER-No. 828905-1</p>	<p>AMP ORDER-No. 828922-1</p>	<p>AMP ORDER-No. 828905-1</p>	<p>AMP ORDER-No. 828922-1</p>	<p>AMP ORDER-No. 828904-1</p>	<p>AMP ORDER-No. 828922-1</p>	<p>AMP ORDER-No. 828904-1</p>	<p>AMP ORDER-No. 828922-1</p>
---	---	------------------------------------	---	-----------------------------	---	---	---	---	--	--	--	--	--	--	--	--