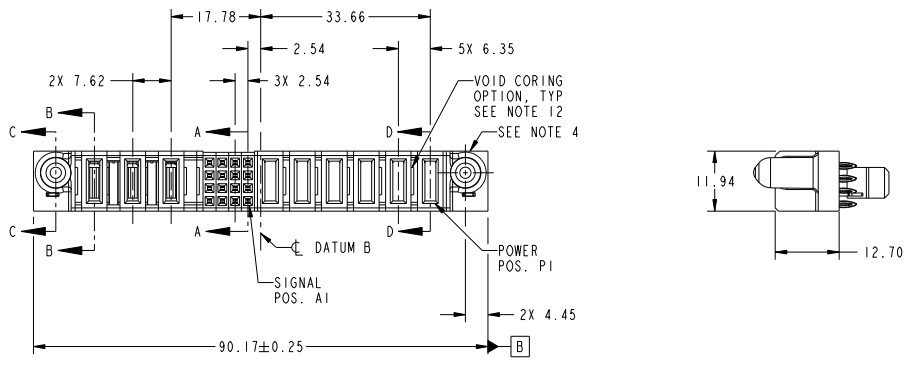


Tous droits strictement réservés. Reproduction ou communication a des tiers interdite sous quelque forme que ce soit sans autorisation écrite du propriétaire. Propriété de FCJ. Droits de reproduction FCJ.

All rights strictly reserved. Reproduction or issue to third parties in any form, whatever is not permitted without written authority from the proprietor. Property of FCJ. Copyright FCJ.

PRODUCT NO.	ROWS	POWER			SIGNAL			POWER			E1				
		E2	P9	P8	P7	4	3	2	1	P6		P5	P4	P3	P2
51927-008... NOTE: 3	D C B A														



CODE	DIM "M" MATING LENGTH	CONTACT TYPE
PF	[2.34]	POWER
F	[N/A]	SIGNAL
PH	[2.34]	POWER
PG	[1.07]	POWER
HA	[N/A]	HOLD-DOWN

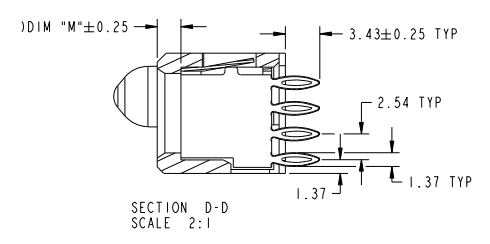
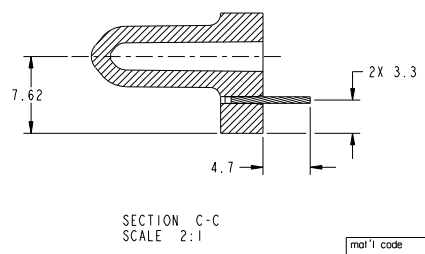
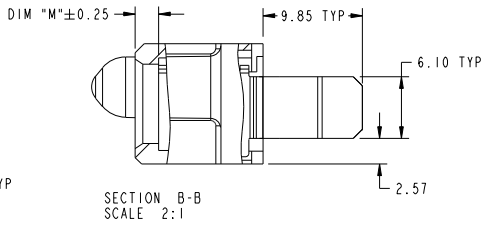
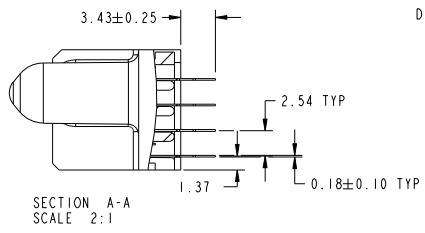
mat'l code				SEE NOTES		tolerances unless otherwise specified		CUSTOMER		FCJ www.fcjconnect.com	
lfr	ecn no.	dr	date	linear	0.X ±0.5	projection	COPY	title			
A	D009-0322	WD	10/21/09		0.XX ±0.25			6P + 16S + 3CP			
				angles	0.XXX ±0.1			VERTICAL PRESS-FIT RECEIPT			
				gr	0° ±2°	MM		product family	PwrBlade	code	213
				eng	Warren Du 09/21/09	scale	1:1	size	dwg no	51927-008	sheet
				chr	PH ZHENG 09/21/09			A			1 of 4
				appd	Joseph Hsiao 09/21/09						
sheet index	revision sheet	A	A	A	A						
		1	2	3	4						

cage code 22526

Tous droits strictement réservés. Reproduction ou communication a des tiers interdite sous quelque forme que ce soit sans autorisation écrite du propriétaire. Propriété de FCJ. Droits de reproduction FCJ.

All rights strictly reserved. Reproduction or issue to third parties in any form whatsoever is not permitted without written authority from the proprietor. Property of FCJ. Copyright FCJ.

PRODUCT NUMBER
51927-008...
NOTE: 3



mat'l code				tolerances unless otherwise specified		CUSTOMER		FCJ	
lir	ecm no.	dr	date	linear	0.X ±0.5	COPY	www.fcjconnect.com		
A					0.XX ±0.25	projection	title		
				angles	0.XXX ±0.1		6P + 16S + 3CP		
				gr	0° ±2°	MM	VERTICAL PRESS-FIT RECEIPT		
				eng	Warren Du 09/21/09	scale	product family	PwrBlade	code
				chr	Warren Du 09/21/09	1:1	size	dwg no	213
				appd	PM ZHENG 09/21/09		A	51927-008	sheet
sheet index	revision sheet				Joseph Hsiao 09/21/09				2 of 4

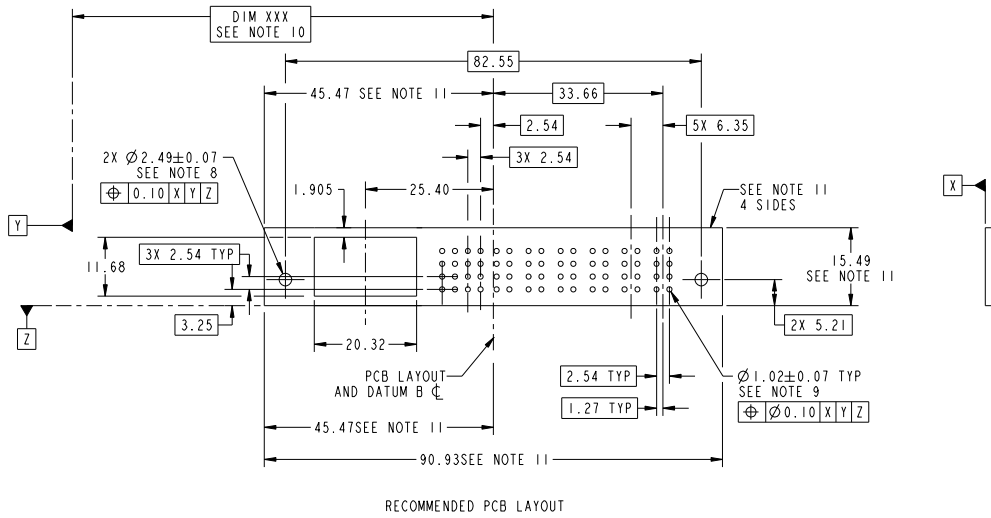
Pro/E 3 cage code 22526 4

Tous droits strictement réservés. Reproduction ou communication à des tiers interdite sous quelque forme que ce soit sans autorisation écrite du propriétaire. Propriété de c.FCI. Droits de reproduction FCI.



All rights strictly reserved. Reproduction or issue to third parties in any form whatsoever is not permitted without written authority from the proprietor. Property of FCI. Copyright FCI.

PRODUCT NUMBER
51927-008...
NOTE: 3



RECOMMENDED PCB LAYOUT

mat'l code				tolerances unless otherwise specified		CUSTOMER		FCI		www.fciconnect.com	
litr	ecr no.	dr	date	linear	0.X ± 0.5	projection	MM	scale	A	title	
A				0.XX ± 0.25	6P + 16S + 3CP						
				0.XXX ± 0.1	VERTICAL PRESS-FIT RECEIPT						
				angles	0° ± 2°					product family	code
				dr	Warren Du 09/21/09					PwrBlade	213
				eng	Warren Du 09/21/09					size	sheet
				chr	PM ZHENG 09/21/09					51927-008	3 of 4
				appd	Joseph Hsiao 09/21/09						
sheet index	revision sheet									code	
										22526	

Pro/E

code 22526

PDM: Rev:A

STATUS:Released

Printed: Dec 20, 2010

Tous droits strictement réservés. Reproduction ou communication à des tiers interdite sous quelque forme que ce soit sans autorisation écrite du propriétaire. Propriété de c.FCI. Droits de reproduction FCI.



All rights strictly reserved. Reproduction or issue to third parties in any form whatsoever is not permitted without written authority from the proprietor. Property of FCI. Copyright FCI.

PRODUCT NUMBER
51927-008_
NOTE: 3

NOTES:

1. DIMENSIONS AND TOLERANCES ARE IN ACCORDANCE WITH ASME Y14.5M, 1994 UNLESS OTHERWISE SPECIFIED.

CONNECTOR NOTES:

- ② HOUSING MATERIAL: UL 94 V-0 GLASS FILLED HIGH-TEMP THERMOPLASTIC
POWER CONTACT MATERIAL: COPPER ALLOY
SIGNAL PIN MATERIAL: COPPER ALLOY
- 3. SEE ITEM 7 & 8 IN PRINT 10064183 FOR PLATING SPEC OF 51927-008 AND 51927-008LF RESPECTIVELY.
- ④ MANUFACTURER'S NAME, P/N, AND DATE CODE TO APPEAR ON THIS SURFACE.
- 5. PRODUCT SPECIFICATION GS-12-149.
APPLICATION SPECIFICATION BUS-20-067.
- 6. PACKAGED IN TRAYS.

PCB NOTES:

- 7. ALL HOLE DIAMETERS ARE FINISHED HOLE SIZE.
- ⑧ MOUNTING HOLES, WHERE APPLICABLE, ARE UNPLATED.
- ⑨ $\varnothing 1.151 \pm 0.025$ DRILLED HOLES PLATED WITH
0.008 MIN SnPb OR Sn OVER 0.03
TO 0.08 Cu PLATING TO ACHIEVE
 $\varnothing 1.02 \pm 0.07$ HOLE.
- ⑩ "DIM XXX" TO BE DETERMINED BY THE CUSTOMER.
- ⑪ CONNECTOR KEEP-OUT ZONE.
- 12. THE VOID CORING IN BETWEEN POWER MODULES, SIGNAL MODULES AND END MODULES ARE OPTIONAL AND THE SHAPE MAY BE DIFFERENT FOR OPTIMIZE THE MOLDING PROCESS. THE VOID CORING WILL NOT EFFECT TO PRODUCT FUNCTION.

mat'l code				tolerances unless otherwise specified		CUSTOMER		FCI	
ltr	ecn no.	dr	date	linear	angles	projection	title	product family	code
A				$0.X \pm 0.5$	$0.XXX \pm 0.25$		6P + 16S + 3CP VERTICAL PRESS-FIT RECEPT	PwrBlade	213
				$0.XXX \pm 0.1$	$0^\circ \pm 2^\circ$				
				gr Warren Du 09/21/09		scale 1:1			
				eng Warren Du 09/21/09					
				chr PW ZHENG 09/21/09					
				appd Joseph Hsiao 09/21/09					
sheet index	revision sheet								

cage code 22526