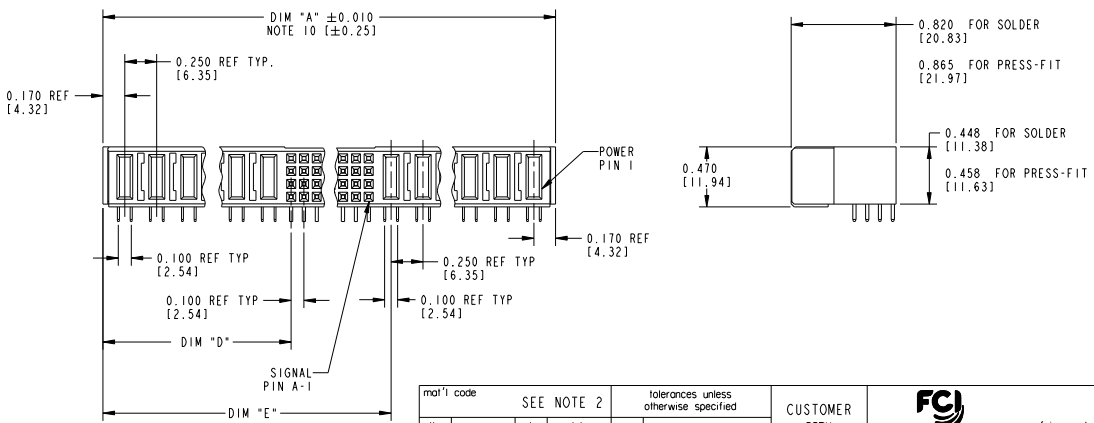
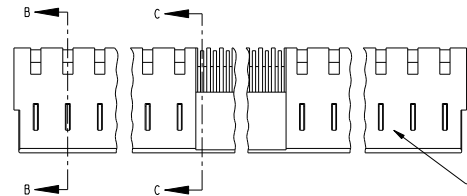


Tous droits strictement réservés. Reproduction ou communication à des tiers sans autorisation écrite du propriétaire. Property of FCJ. Droits de reproduction FCJ.



All rights strictly reserved. Reproduction or issue to third parties in any form or by any means without written authority from the proprietor. Property of FCJ. Copyright FCJ.

PRODUCT NUMBER
51764-ABBCCDDDE0...
SEE NOTE 1



mat'l code		SEE NOTE 2	tolerances unless otherwise specified	CUSTOMER COPY	FCJ www.fcjconnect.com
lfr	ecn no.	dr	date	linear	projection
J	DG06-0177	RYAN	05/08/06	.XXX±.01 / XX±.3	
K	DG07-0012	JW114	01-11-07	.XXX±.005 / XX±.13	
L	0608-0239	JC	09/11/08	.XXX±.0020 / XXX±.051	
				angles	
				Ø	
F	V02389	JRW	10-05-00	eng	J. BROWN 05-18-99
G	V21512	TAB	10-04-02	chr	J. BROWN 05-18-99
H	V03-0769	TAB	07-17-03	appd	J. BROWN 05-18-99
sheet index	revision sheet	L	L	L	
		1	2	3	

THIS FILE WAS ORIGINALLY CREATED IN THE PRO ENGINEER ENVIRONMENT AND ANY FUTURE REVISIONS TO THIS FILE MUST BE MADE IN THE PRO ENGINEER ENVIRONMENT

form no. 7530-001-I03

1 | 2

3 |

cage code 22526

4

Tous droits strictement réservés. Reproduction ou communication à des tiers sans autorisation écrite du propriétaire. Property of FCJ. Droit de reproduction FCJ.



All rights strictly reserved. Reproduction or issue to third parties in any form or by any means without written authority from the proprietor. Property of FCJ. Copyright FCJ.

PRODUCT NUMBER	DIM
51764-ABBCCDDE0..	
SEE NOTE 1	

DIM	LENGTH FORMULAS (SEE NOTE 10)
DIM "A"	.250 [6.35] x DD + .100 [2.54] x (CCC/4) + .250 [6.35] x BB + .090 [2.29] (NOTE 10)
DIM "D"	.250 [6.35] x DD + .095 [2.41]
DIM "E"	.250 [6.35] x DD + .100 [2.54] x (CCC/4) + .170 [4.32]
DIM "F"	.250 [6.35] x DD + .100 [2.54] x (CCC/4) + .250 [6.35] x BB + .120 [3.05]
DIM "G"	.250 [6.35] x DD - .025 [0.64]
DIM "H"	.250 [6.35] x DD + .100 [2.54] x (CCC/4)

CONNECTOR NOTES

1. PRODUCT NUMBER CODE:  
 51764 - A BB CCC DD E O LF  
 WITH THIS SUFFIX: Sn OR Au PLATING AT PCB INTERFACE  
 W/O THIS SUFFIX: SnPb PLATING AT PCB INTERFACE  
 ALWAYS "0" (ZERO) (NOTE 8)  
 TAIL OPTIONS (NOTE 7)  
 NUMBER OF LEFT END POWER CONTACTS (NOTE 6)  
 NUMBER OF SIGNAL CONTACTS (NOTE 5)  
 NUMBER OF RIGHT END POWER CONTACTS (NOTE 4)  
 PLATING (NOTE 3)  
 BASE NUMBER
2. HOUSING MATERIAL: GLASS FILLED V-O HIGH TEMP THERMO PLASTIC.  
 SIGNAL CONTACT MATERIAL: COPPER ALLOY  
 POWER CONTACT MATERIAL: COPPER ALLOY
3. PLATING OPTION:  
 1 = SEE PRINT 10064183 FOR PLATING SPEC OF 51764-1BBCCDDE0; 51764-1BBCCDDE0LF
4. RIGHT END POWER CONTACTS, 01 TO 19 AVAILABLE.  
 MAXIMUM OF 20 POWER CONTACTS PER CONNECTOR
5. SIGNAL CONTACTS, 004 TO 148 AVAILABLE FOR SOLDER TO BOARD.  
 020 TO 148 AVAILABLE FOR PRESS-FIT TO BOARD.
6. LEFT END POWER CONTACTS, 01 TO 19 AVAILABLE.  
 MAXIMUM OF 20 POWER CONTACTS PER CONNECTOR
7. TAIL OPTIONS:  
 A = .135 ± .01 [3.43 ± 0.25] SOLDER TO BOARD  
 B = .090 + .005 / -.010 [2.29 + 0.13 / -0.25] SOLDER TO BOARD  
 C = .154 ± .010 [3.91 ± 0.25] PRESS-FIT TO BOARD
8. BOARD RETENTION: NOT AVAILABLE WITH GUIDELESS ENDS
9. MANUFACTURE'S NAME, P/N, AND DATE CODE TO APPEAR ON THIS SURFACE.
10. THE MAXIMUM OVERALL LENGTH (DIM A) OF A PART IS 8.00 [203.2]
11. PRODUCT SPECIFICATION GS-12-149
12. APPLICATION SPECIFICATION BUS-20-067
13. FOR PRESS-FIT CONNECTORS USE FCJ CAM TOOL 430140-XXX TO APPLY CONNECTOR TO PCB.
- PCB NOTES:  
 14. ALL DIMENSIONS ARE BASIC UNLESS OTHERWISE SPECIFIED.  
 15. ALL THROUGH HOLES ARE LOCATED WITH A TRUE POSITION OF .004(0.10)  
 16. ALL HOLE DIAMETERS ARE FINISHED HOLE SIZE.  
 17. ∅0.0453 ± .001 [1.151 ± 0.02] DRILLED HOLES PLATED WITH 0.0003 [0.007] MIN SnPb OVER 0.001 [1.03] TO .003 [0.08] PLATING TO ACHIEVE A .040 ± .003 [1.02 ± 0.08] HOLE.  
 18. A Δ SYMBOL WILL BE NEXT TO ANY DIMENSION, VIEW, OR NOTE WHICH HAS BEEN MODIFIED WITH THE CURRENT DRAWING REVISION.

THIS FILE WAS ORIGINALLY CREATED IN THE PRO ENGINEER ENVIRONMENT AND ANY FUTURE REVISIONS TO THIS FILE MUST BE MADE IN THE PRO ENGINEER ENVIRONMENT

mat'l code				SEE NOTE 2		tolerances unless otherwise specified		CUSTOMER COPY		FCJ www.fcjconnect.com	
ltr	ecn no.	dr	date	linear	.XX±.01/XX±.3	projection	RIGHT ANGLE RECEPTACLE w/o GUIDE PIN POWER / SIGNAL / POWER		product family	PWRBLADE code 213	
				angles	.XXX±.005/XXX.13				size	51764	
					.XXXX±.0020/XXXX.051				scale	1:2	
				dr	DOUBLE 05-18-99						
				eng	J. BROWN 05-18-99						
				chr	J. BROWN 05-18-99						
				appd	J. BROWN 05-18-99						
sheet index	revision sheet										

form no. 7530-001-I03

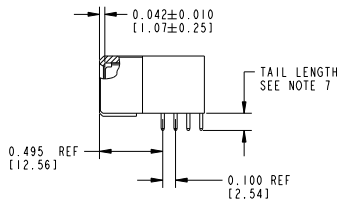
cage code 22526

Tous droits strictement réservés. Reproduction ou communication à des tiers sans autorisation écrite du propriétaire. Propriété de FCJ. Droits de reproduction FCJ.

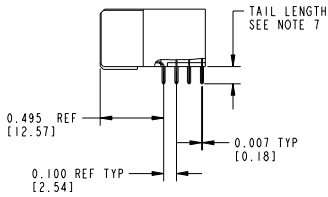


All rights strictly reserved. Reproduction or issue to third parties in any form or by any means without written authority from the proprietor. Property of FCJ. Copyright FCJ.

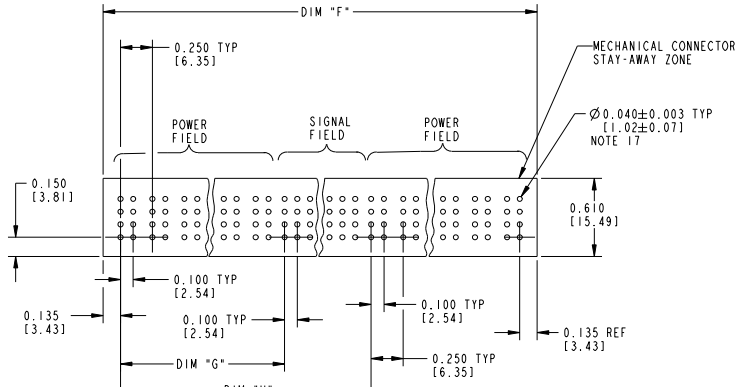
PRODUCT NUMBER
51764-ABBCCDDDE0..
SEE NOTE 1



SECTION B-B



SECTION C-C



RECOMMENDED PCB LAYOUT

mat'l code		SEE NOTE 2		tolerances unless otherwise specified		CUSTOMER COPY		FCJ www.fcjconnect.com	
lfr	ecr no.	dr	date	linear	.XX±.01/ X±.3	projection		title	
L				angles	.XXX±.005/ X±.13			RIGHT ANGLE RECEPTACLE w/o GUIDE PIN POWER / SIGNAL / POWER	
				d	DIGGLE 05-09-00	INCH / MM	product family	PWRBLADE code	
				eng	J. BROWN 05-09-00	scale	size	dwg no	213
				chr	J. BROWN 05-09-00	1:1	A	51764	SHEET 3 OF 3
				appd	J. BROWN 05-09-00				
sheet index	revision sheet							cage code	22526

form no. 7530-001-103

cage code 22526

PDM: Rev:L

STATUS:Released

Printed: Dec 20, 2010