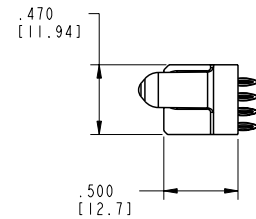
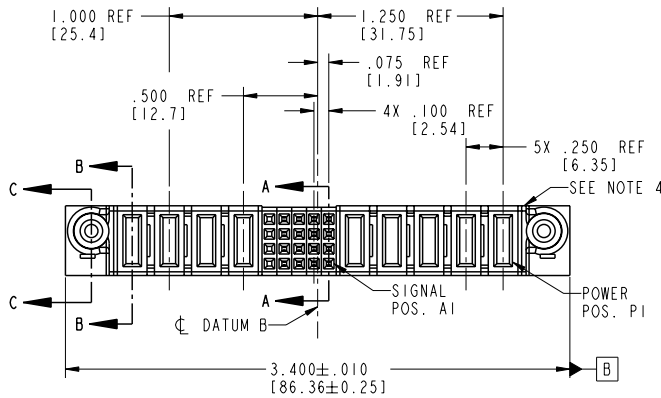


Tous droits strictement réservés. Reproduction ou communication à des tiers interdite sans la permission écrite du propriétaire. Property of FCI. Droits de reproduction FCI.

All rights strictly reserved. Reproduction or issue to third parties in any form is prohibited without written authority from the proprietor. Property of FCI. Copyright FCI.

PRODUCT NO. 51750-041-- NOTE: 3	ROWS D C B A	POWER				SIGNAL				POWER				E1	
		E2	P9	P8	P7	P6	5	4	3	2	1	P5	P4		P3



CODE	DIM "M" MATING LENGTH	CONTACT TYPE
F	N/A [N/A]	SIGNAL
PC	.042 [1.07]	POWER
PF	.092 [2.34]	POWER
X	OMITTED	OMITTED

mat'l code				SEE NOTE 2		tolerances unless otherwise specified		CUSTOMER		 www.fciconnect.com	
lfr	ecr no.	dr	date	linear	.XX±.01/0.XX±0.3	projection	COPY	title 5P + 20S + 4P			
A	V21910	TAB	12/20/02	linear	.XXX±.005/0.XX±0.13	INCH/MM	1:1	VERTICAL PRESS FIT RECEPT			
B	DG05-0504	GuoJM	11/29/05	angles	.XXX±.0020/0.XXX±0.051	scale	1:1	product family PwrBlade		code 213	
				dr	T. BRUNGARD 12/20/02			size		sheet 1 of 4	
				eng	M. MOSTOLLER 12/20/02			dwg no		51750-041	
				chr	M. MOSTOLLER 12/20/02			A			
				oppd	M. MOSTOLLER 12/20/02						
sheet index	revision sheet	B	B	B	B						
		1	2	3	4						

Pro/E

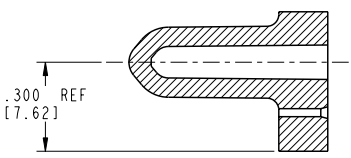
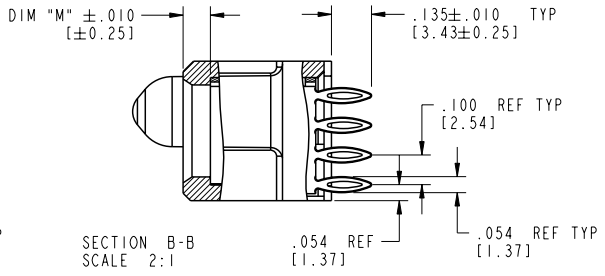
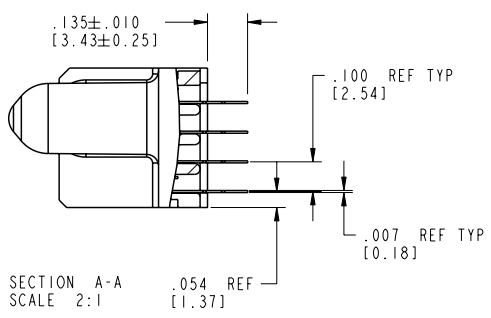
cage code 22526

PDM: Rev:B STATUS: Released Printed: Oct 08, 2006

Tous droits strictement réservés. Reproduction ou communication à des tiers interdite sans la permission écrite du propriétaire. Property of FCI. Droits de reproduction FCI.

All rights strictly reserved. Reproduction or issue to third parties in any form is prohibited without written authority from the proprietor. Property of FCI. Copyright FCI.

PRODUCT NUMBER  
51750-041--  
NOTE: 3



mat'l code		SEE NOTE 2		tolerances unless otherwise specified		CUSTOMER		FCI		www.fciconnect.com	
lfr	ecn no.	dr	date	linear	.XX±.01/0.XY±0.3	projection	COPY	title	5P + 20S + 4P		
B					.XXX±.005/0.XY±0.13	INCH/MM		VERTICAL PRESS FIT RECEPT			
				angles	.XXX±.0020/0.XXX±0.051	scale		product family	PwrBlade		
				dr	T. BRUNGARD 12/20/02	1:1		size	dwg no	code	
				eng	M. MOSTOLLER 12/20/02			A	51750-041	213	
				chr	M. MOSTOLLER 12/20/02					sheet	
				appd	M. MOSTOLLER 12/20/02					2 of 4	
sheet index	revision sheet										

cage code 22526

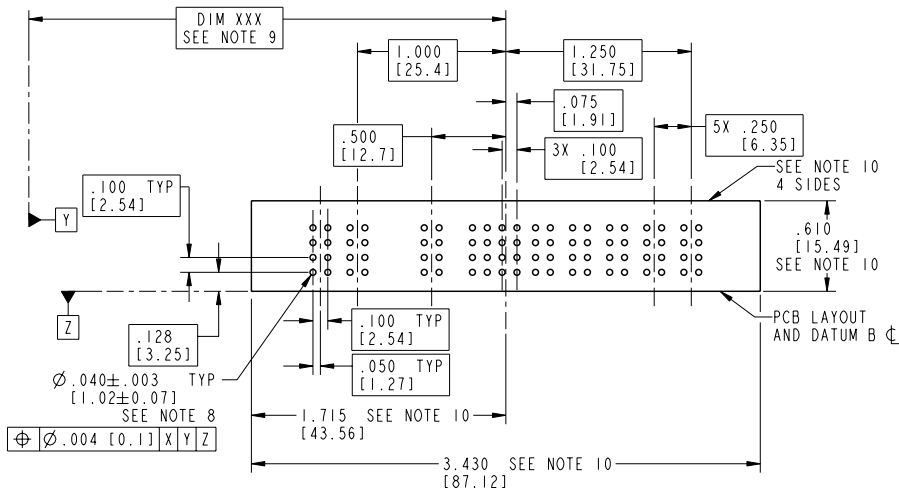
Pro/E



PDM: Rev:B STATUS: Released Printed: Oct 08, 2006

Tous droits strictement réservés. Reproduction ou communication o des tiers interdite sans l'aveu écrit de nos services. Propriété de c FCI. Droits de reproduction FCI.

All rights strictly reserved. Reproduction or issue to third parties in any form is prohibited without written authority from the proprietor. Property of FCI. Copyright FCI.

PRODUCT NUMBER  
51750-041--  
NOTE: 3



mat'l code		SEE NOTE 2	tolerances unless otherwise specified		CUSTOMER	 www.fciconnect.com
lfr	ecn no.	dr	date	linear	COPY	
B				.XX±.01/0.XX±0.3	projection	title
				.XXX±.005/0.XX±0.13	 INCH/MM	5P + 20S + 4P
				.XXX±.0020/0.XX±0.051		VERTICAL PRESS FIT RECEIPT
				angles	scale	product family
				0°+°	1:1	PwrBlade
				dr		code
				T. BRUNGARD		213
				eng		sheet
				M. MOSTOLLER		3 of 4
				chr		
				M. MOSTOLLER		
				appd		
				M. MOSTOLLER		
sheet index	revision sheet					

cage code 22526

Tous droits strictement réservés. Reproduction ou communication a des tiers interdite sans l'aveu écrit de nos services. Propriété de FCI. Droits de reproduction FCI.

All rights strictly reserved. Reproduction or issue to third parties in any form is prohibited without written authority from the proprietor. Property of FCI. Copyright FCI.

1 | 2

3 |

4

**PRODUCT NUMBER**  
51750-041\_\_  
NOTE: 3

**NOTES:**

1. DIMENSIONS AND TOLERANCES ARE IN ACCORDANCE WITH ASME Y14.5M, 1994 UNLESS OTHERWISE SPECIFIED.

**CONNECTOR NOTES:**

② HOUSING MATERIAL: UL 94 V-0 GLASS FILLED HIGH-TEMP THERMOPLASTIC  
POWER CONTACT MATERIAL: COPPER ALLOY  
SIGNAL PIN MATERIAL: COPPER ALLOY

3. PLATING:  
51750-041 Singal Pin:30u"/0.76um Au OVER 50u"/1.27um Ni ON THE CONTACT AREA.  
AND 100u"/2.54um SnPb PLATING OVER 50u"/1.27um Ni ON THE TERMINATION SECTION.  
Power Pin:30u"/0.76um Au OVER 50u"/1.27um Ni ON THE CONTACT AREA,  
AND 100u"/2.54um SnPb PLATING OVER 50u"/1.27um Ni ON THE TERMINATION SECTION.

51750-041LF Singal Pin:30u"/0.76um Au OVER 50u"/1.27um Ni ON THE CONTACT AREA.  
AND 78u"/2.00um Sn PLATING OVER 50u"/1.27um Ni ON THE TERMINATION SECTION.  
Power Pin:30u"/0.76um Au OVER 50u"/1.27um Ni ON THE CONTACT AREA,  
AND 78u"/2.00um Sn PLATING OVER 50u"/1.27um Ni ON THE TERMINATION SECTION.

PART NUMBER 51750-041LF MEETS EUROPEAN UNION DIRECTIVE AND OTHER ICOUNTRY REGULATIONS AS DESCRIBED IN GS-22-008.

THE HOUSING WILL WITHSTAND EXPOSURE TO 260° PEAK TEMPERATURE FOR 10 SECONDS IN A WAVE SOLDER APPLICATION WITH A CIRCUIT BOARD.

④ MANUFACTURER'S NAME, P/N, AND DATE CODE TO APPEAR ON THIS SURFACE.

5. PRODUCT SPECIFICATION GS-12-149.  
APPLICATION SPECIFICATION BUS-20-067.


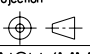
**PCB NOTES:**

6. ALL HOLE DIAMETERS ARE FINISHED HOLE SIZE.  
7. MOUNTING HOLES, WHERE APPLICABLE, ARE UNPLATED.

⑧  $\varnothing .0453 \pm .0010$  [1.151  $\pm$  0.025] DRILLED HOLES PLATED WITH .0003 [0.008] MIN SnPb OVER .001 [0.03] TO .003 [0.08] Cu PLATING TO ACHIEVE  $\varnothing .040 \pm .003$  [1.02  $\pm$  .07] HOLE.

⑨ "DIM XXX" TO BE DETERMINED BY THE CUSTOMER.

⑩ CONNECTOR KEEP-OUT ZONE.

mat'l code				SEE NOTE 2	tolerances unless otherwise specified	CUSTOMER	 www.fciconnect.com		
ltr	ecn no.	dr	date	linear	.XX±.01/0.XX±0.3	COPY	title 5P + 20S + 4P		
B				angles	.XXX±.0020/0.XXX±0.051	projection	VERTICAL PRESS FIT RECEIPT		
				dr	T.BRUNGARD 12/20/02	 INCH/MM scale 1:1	product family	PwrBlade	
				eng	M.MOSTOLLER 12/20/02		size	dwg no	code 213
				chr	M.MOSTOLLER 12/20/02		A	51750-041	sheet 4 of 4
				appd	M.MOSTOLLER 12/20/02				
sheet index	revision sheet								

1 | 2

3 |

4

Pro/E

cage code 22526