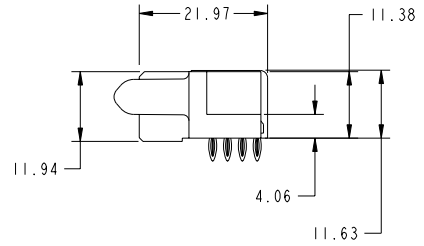
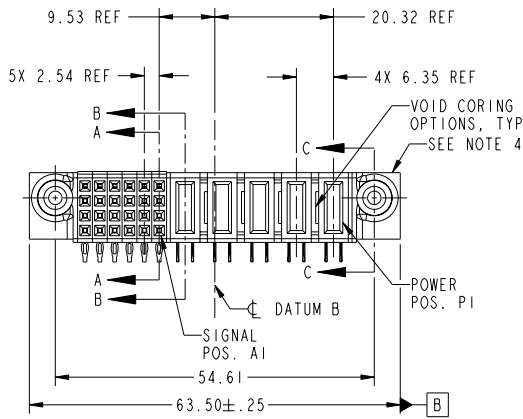


Tous droits strictement réservés. Reproduction ou communication o des liens interdite sous quelque forme que ce soit sans autorisation écrite du propriétaire. Propriete de c FCI. Droits de reproduction FCI.



All rights strictly reserved. Reproduction or issue to third parties in any form whatever is not permitted without written authority from the proprietor. Property of FCI. Copyright FCI.

PRODUCT NO.	ROWS	SIGNAL					POWER					E1	
		E2	6	5	4	3	2	1	P5	P4	P3		P2
51772-007... NOTE 3	D C B A	S	S	S	S	S	S	P	P	P	P	P	S
		R	R	R	R	R	R	P	P	P	P	P	R
		P	P	P	P	P	P	P	P	P	P	P	P
		N	N	N	N	N	N	N	N	N	N	N	N



CODE	DIM "M" MATING LENGTH	CONTACT TYPE
PF	[2.34]	POWER
S	[N/A]	SIGNAL
R	[N/A]	SIGNAL
P	[N/A]	SIGNAL
N	[N/A]	SIGNAL
PE	[1.07]	POWER

mat'l code SEE NOTE 2				tolerances unless otherwise specified		CUSTOMER		FCI www.fciconnect.com	
lfr	ecm no.	dr	date	linear	0.X ± 0.3	COPY		title	
A	DG06-0482	JULIA	11/20/06	0.XX ± 0.13	projection	5P + 24S		R/A PRESS FIT RECEPTACLE	
				angles	0.XXX ± 0.051	product family		PwrBlade	
				dr	0° ± 2°	size		code	
				enr	JULIA WANG 11/20/06	A		213	
				chr	RYAN YUAN 11/20/06	scale		sheet	
				appr	BEER FU 11/20/06	1:1		1 of 4	
				sheet index	JOSEPH HSIA 11/20/06	A		51772-007	
				revision sheet		cage code		22526	
				1	2			4	

Pro/E

PDM: Rev:A

STATUS: Released

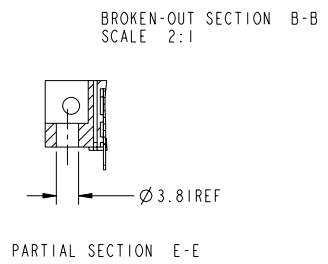
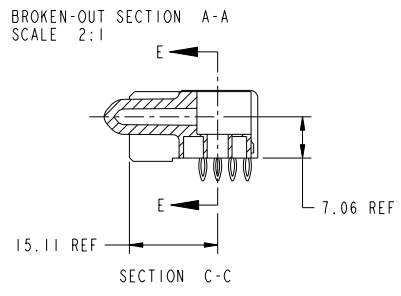
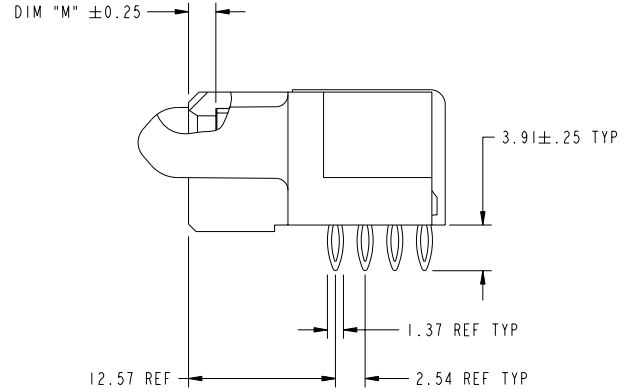
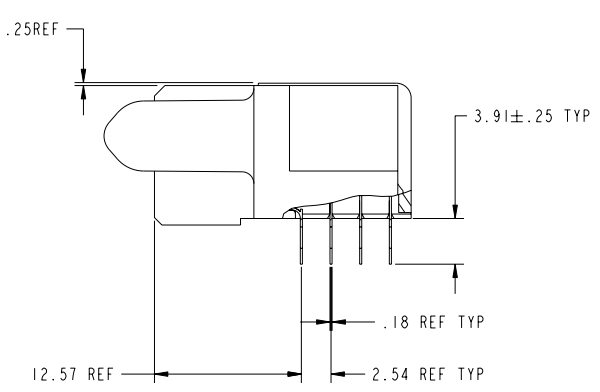
Printed: Dec 20, 2010

Tous droits strictement réservés. Reproduction ou communication o des liens interdite sous quelque forme que ce soit sans autorisation écrite du propriétaire. Propriete de c FCI. Droits de reproduction FCI.



All rights strictly reserved. Reproduction or issue to third parties in any form whatever is not permitted without written authority from the proprietor. Property of FCI. Copyright FCI.

PRODUCT NUMBER
51772-007--
NOTE 3



mat'l code				SEE NOTE 2	tolerances unless otherwise specified		CUSTOMER	FCI		www.fciconnect.com
litr	ecn no.	dr	date	linear	0.X ± 0.3	projection	COPY	title		
A					0.XX ± 0.13			5P + 24S		
				angles	0.XXX ± 0.051			R/A PRESS FIT RECEPTACLE		
				dr	JULIA WANG 11/20/06		product family	PwrBlade	code	213
				engr	RYAN YUAN 11/20/06		size	dwg no	51772-007	
				chr	BEER FU 11/20/06	scale	A	sheet		
				appd	JOSEPH HSIA 11/20/06	1:1	2 of 4			
sheet index	revision sheet									
							cage code	22526		

Pro/E 3 cage code 22526 4

PDM: Rev:A STATUS:Released Printed: Dec 20, 2010

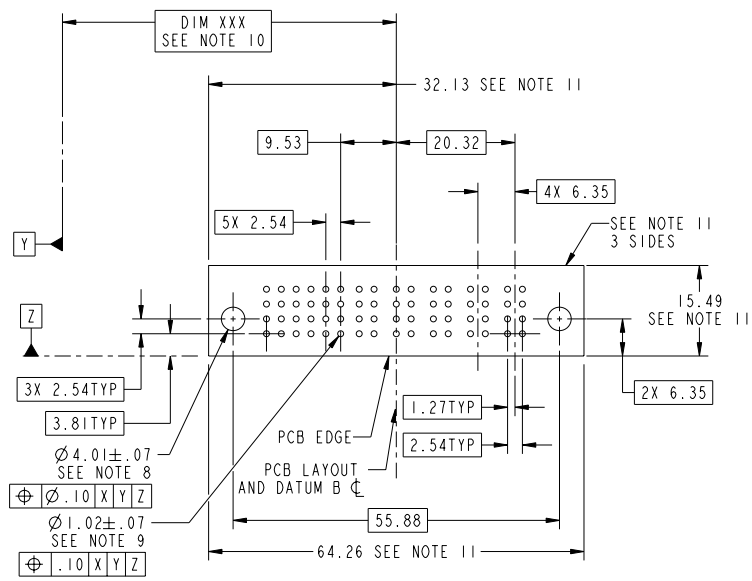
Tous droits strictement réservés. Reproduction ou communication o des liens interalte sous quelque forme que ce soit sans autorisation écrite du propriétaire. Propriete de c FCI. Droits de reproduction FCI.



All rights strictly reserved. Reproduction or issue to third parties in any form whatever is not permitted without written authority from the proprietor. Property of FCI. Copyright FCI.

PRODUCT NUMBER
51772-007--
NOTE 3

1 | 2 | 3 | 4



mat'l code		SEE NOTE	tolerances unless otherwise specified	CUSTOMER	FCI
ltr	ecn no.	dr	date	linear	www.fciconnect.com
A				0.X ±0.3	
				0.XX ±0.13	projection
				0.XXX ±0.051	MM
				angles	scale
				0° ±2°	1:1
				dr	JULIA WANG 11/20/06
				engr	RYAN YUAN 11/20/06
				chr	BEER FU 11/20/06
				oppd	JOSEPH HSIA 11/20/06
sheet index	revision sheet				

title 5P + 24S
R/A PRESS FIT RECEPTACLE
product family PwrBlade
size A
dwg no 51772-007
code 213
sheet 3 of 4

1 | 2 | 3 | 4

Pro/E

cage code 22526

PDM: Rev:A STATUS:Released Printed: Dec 20, 2010

Tous droits strictement réservés. Reproduction ou communication à des tiers interdite sans quelque forme que ce soit sans autorisation écrite du propriétaire. Propriété de c FCI. Droits de reproduction FCI.



All rights strictly reserved. Reproduction or issue to third parties in any form whatever is not permitted without written authority from the proprietor. Property of FCI. Copyright FCI.

PRODUCT NUMBER
51772-007--
NOTE 3

NOTES:

1. DIMENSIONS AND TOLERANCES ARE IN ACCORDANCE WITH ASME Y14.5M, 1994 UNLESS OTHERWISE SPECIFIED.

CONNECTOR NOTES:

- ② HOUSING MATERIAL: UL 94 V-0 GLASS FILLED HIGH-TEMP THERMOPLASTIC
POWER CONTACT MATERIAL: COPPER ALLOY
SIGNAL PIN MATERIAL: COPPER ALLOY
 - 3. PLATING:
51772-007,51772-007LF PLATING SPEC. WAS SHOWN IN THE PRINT OF 10064183.
 - ④ MANUFACTURER'S NAME, P/N, AND DATE CODE TO APPEAR ON THIS SURFACE.
 - 5. PRODUCT SPECIFICATION GS-12-149.
APPLICATION SPECIFICATION BUS-20-067.
 - 6. PACKAGED IN TRAYS.
- PCB NOTES:
- 7. ALL HOLE DIAMETERS ARE FINISHED HOLE SIZE.
 - ⑧ MOUNTING HOLES, WHERE APPLICABLE, ARE UNPLATED.
 - ⑨ $\varnothing 1.151 \pm 0.025$ DRILLED HOLES PLATED WITH 0.008 MIN SnPb OR Sn OVER 0.03 TO 0.08 Cu PLATING TO ACHIEVE $\varnothing 1.02 \pm .07$ HOLE.
 - ⑩ "DIM XXX" TO BE DETERMINED BY THE CUSTOMER.
 - ⑪ CONNECTOR KEEP-OUT ZONE.
 - 12. USE FCI CAM TOOL 430140-XXX TO APPLY CONNECTOR TO PCB.

mat'l code				SEE NOTE 2		tolerances unless otherwise specified		CUSTOMER		FCI www.fciconnect.com	
ltr	ecm no.	dr	date	linear	0.X ±0.3	projection	COPY		title		
A					0.XX ±0.13		R/A PRESS FIT RECEPTACLE		5P + 24S		
				angles	0.XXX ±0.051		MM		product family		code
				dr	JULIA WANG 11/20/06	scale	1:1		PwrBlade		213
				engr	RYAN YUAN 11/20/06	size	A		dwg no		sheet
				chr	BEER FU 11/20/06	51772-007		4 of 4			
				appd	JOSEPH HSIA 11/20/06						
sheet index	revision sheet										

cage code 22526 4

PDM: Rev:A STATUS:Released Printed: Dec 20, 2010