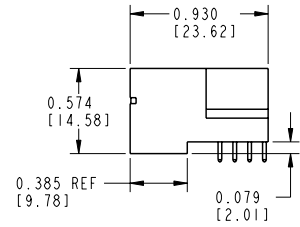
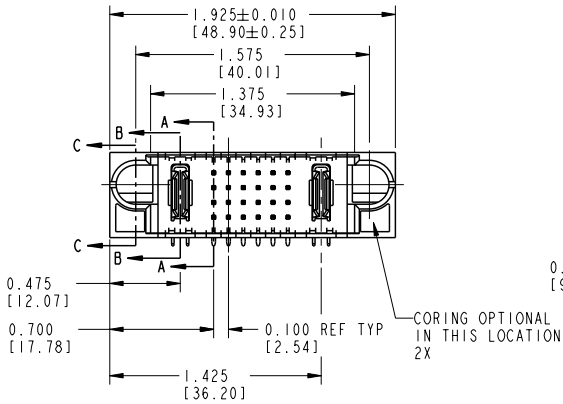
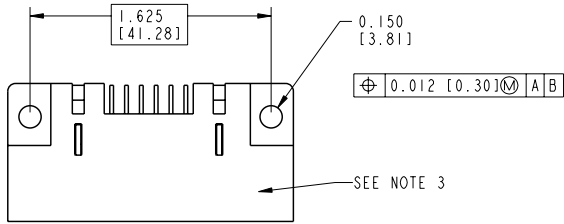


Tous droits strictement réservés. Reproduction ou communication à des tiers sans charge sans autorisation écrite du propriétaire. Property of FCI. Droits de reproduction FCI.

All rights strictly reserved. Reproduction or issue to third parties in any form is prohibited without written authority from the proprietor. Property of FCI. Copyright FCI.

PRODUCT No.	ROWS	POWER		SIGNAL						POWER	
		E1	P1	1	2	3	4	5	6	P2	E2
51415-004-- NOTE: 2	D C B A										



ITEM NO.	DIM "M" MATING LENGTH ±.010	CONTACT TYPE
E	0.220 [5.59]	SIGNAL
F	0.220 [5.59]	SIGNAL
G	0.220 [5.59]	SIGNAL
H	0.220 [5.59]	SIGNAL
R	0.270 [6.86]	SIGNAL
S	0.270 [6.86]	SIGNAL
T	0.270 [6.86]	SIGNAL
U	0.270 [6.86]	SIGNAL
PA	N/A	POWER

mat'l code SEE NOTE 1				tolerances unless otherwise specified		CUSTOMER COPY	www.fciconnect.com	
lfr	ecn no.	dr	date	linear	.XX±.01/.X±.3			
A	V12130	BMR	08/17/01		.XXX±.005/.X±.13		product family PWRBLADE	
B	V03-0571	TAB	05/28/03		.XXX±.0020/.XXX±.051			size A
C	DG05-0363	GuoJM	09/28/05	angles	0°±2°	scale 1:1	dwg no 51415-004	
				dr	B. ROHRBAUGH 08/17/01			sheet index 1 2
				engr	J. ALLISON 08/17/01	1 OF 3		
				chr	J. ALLISON 08/17/01			
				oppd	J. ALLISON 08/17/01			

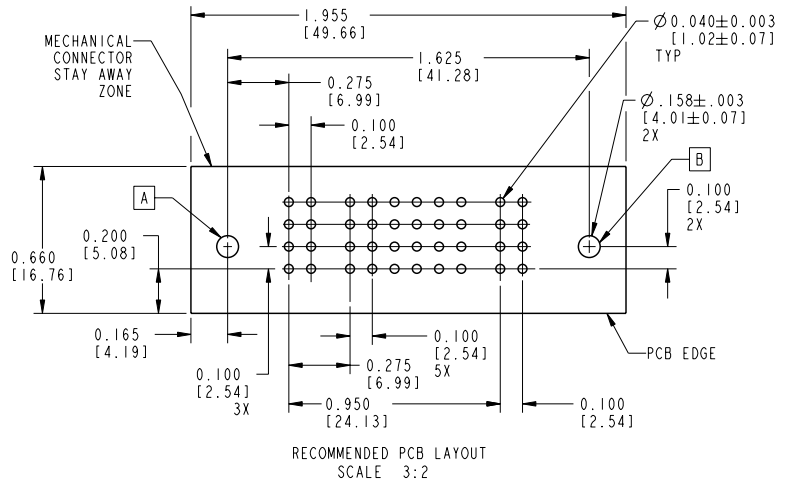
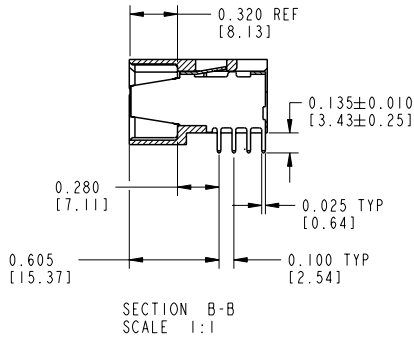
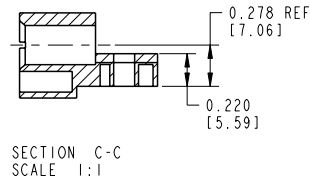
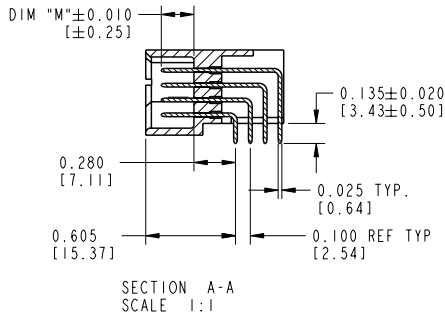
form no. 7530-001-103

PDM: Rev:C STATUS:Released Printed: Oct 08, 2006

Tous droits strictement réservés. Reproduction ou communication à des tiers sans charge écrite de l'autorisation écrite du propriétaire. Property of FCI. Copyright FCI. Droits de reproduction FCI.

All rights strictly reserved. Reproduction or issue to third parties in any form is prohibited without written authority from the proprietor. Property of FCI. Copyright FCI.

PRODUCT NUMBER
51415-004--
NOTE: 2



mat'l code				tolerances unless otherwise specified		CUSTOMER COPY		FCI www.fciconnect.com	
lfr	ecr no.	dr	date	linear	.XX±.01/.X±.3	projection	title	IP + 24S + IP	code
C				angles	.XXX±.005/.X±.13		RIGHT ANGLE SOLDER HEADER		213
				dr	.XXX±.0020/.XXX±.051	INCH / MM	product family	PWRBLADE	2
				enr	0°±2°	scale	size	51415-004	
				chr	B. ROHRBAUGH 08/17/01	1:1	dwg no		
				appd	J. ALLISON 08/17/01				
sheet index	revision sheet								

form no. 7530-001-103

code code 22526

Tous droits strictement réservés. Reproduction ou communication a des tiers sans charge sans autorisation écrite du propriétaire. Property of FCI. Droits de reproduction FCI.

All rights strictly reserved. Reproduction or issue to third parties in any form is prohibited without written authority from the proprietor. Property of FCI. Copyright FCI.

1 | 2 | | | | | | | | | | | | | 3 |

4

PRODUCT NUMBER
51415-004--
NOTE: 2

CONNECTORS - NOTES:

- 1. HOUSING MATERIAL: UL 94 V-0 GLASS FILLED HIGH TEMP THERMO PLASTIC
- POWER CONTACT MATERIAL: COPPER ALLOY
- SIGNAL PIN MATERIAL: COPPER ALLOY

2. PLATING:

- 51415-004 Singal Pin:30u"/0.76um Au OVER 50u"/1.27um Ni ON THE WHOLE AREA.
Power Pin:30u"/0.76um Au OVER 50u"/1.27um Ni ON THE CONTACT AREA,
AND 100u"/2.54um SnPb PLATING OVER 50u"/1.27um Ni ON THE TERMINATION SECTION.
- 51415-004LF Singal Pin:30u"/0.76um Au OVER 50u"/1.27um Ni ON THE WHOLE AREA.
Power Pin:30u"/0.76um Au OVER 50u"/1.27um Ni ON THE CONTACT AREA,
AND 78u"/2.00um Sn PLATING OVER 50u"/1.27um Ni ON THE TERMINATION SECTION.

PART NUMBER 51415-004LF MEETS EUROPEAN UNION DIRECTIVE AND OTHER COUNTRY REGULATIONS AS DESCRIBED IN GS-22-008.

THE HOUSING WILL WITHSTAND EXPOSURE TO 260° PEAK TEMPERATURE FOR 10 SECONDS IN A WAVE SOLDER APPLICATION WITH A CIRCUIT BOARD.

- 3. "MANUFACTURER" NAME, P/N, AND DATE CODE TO APPEAR ON THIS SURFACE
- 4. PRODUCT SPECIFICATION GS-12-149

PCB - NOTES:

- 5. ALL DIMENSIONS ARE BASIC UNLESS OTHERWISE SPECIFIED.
- 6. ALL THROUGH HOLES ARE LOCATED WITH A TRUE POSITION OF $\varnothing.004$ [0.10] TO DATUMS A & B
- 7. ALL HOLE DIAMETERS ARE FINISHED HOLE SIZE
- 8. $\varnothing.158$ [4.01] THROUGH HOLES ARE UNPLATED
- 9. $\varnothing.0453 \pm 0.0010$ [1.151 \pm 0.025] DRILLED HOLES PLATED WITH 0.0003 [0.008] MIN SnPb OVER .001 [0.03] TO .003 [0.08] Cu PLATING TO ACHIEVE A $\varnothing.040 \pm .003$ [1.02 \pm .07] HOLE

A

A

CONFIDENTIAL

mat'l code				SEE NOTES		tolerances unless otherwise specified		CUSTOMER	
lfr	ecn no.	dr	date	linear	.XXX±.01/.X±.3	projection	COPY		
C				angles	.XXX±.005/.X±.13		title IP + 24S + IP		
				dr	.XXX±.0020/.XXX±.051		product family PWRBLADE		
				engr	0° ± 2°	INCH / MM	size	dwg no	code
				chr	B. ROHRBAUGH 08/17/01	scale	A	51415-004	213
				oppd	J. BROWN 01-12-99	1:1			sheet
					J. ALLISON 08/17/01				3
					J. ALLISON 08/17/01				
sheet index	revision sheet								

THIS FILE WAS ORIGINALLY CREATED IN THE PRO ENGINEER ENVIRONMENT AND ANY FUTURE REVISIONS TO THIS FILE MUST BE MADE IN THE PRO ENGINEER ENVIRONMENT

B

B

form no. 7530-001-103

1 | 2 | | | | | | | | | | | | | 3 |

code code 22526

4

PDM: Rev:C STATUS: Released Printed: Oct 08, 2006