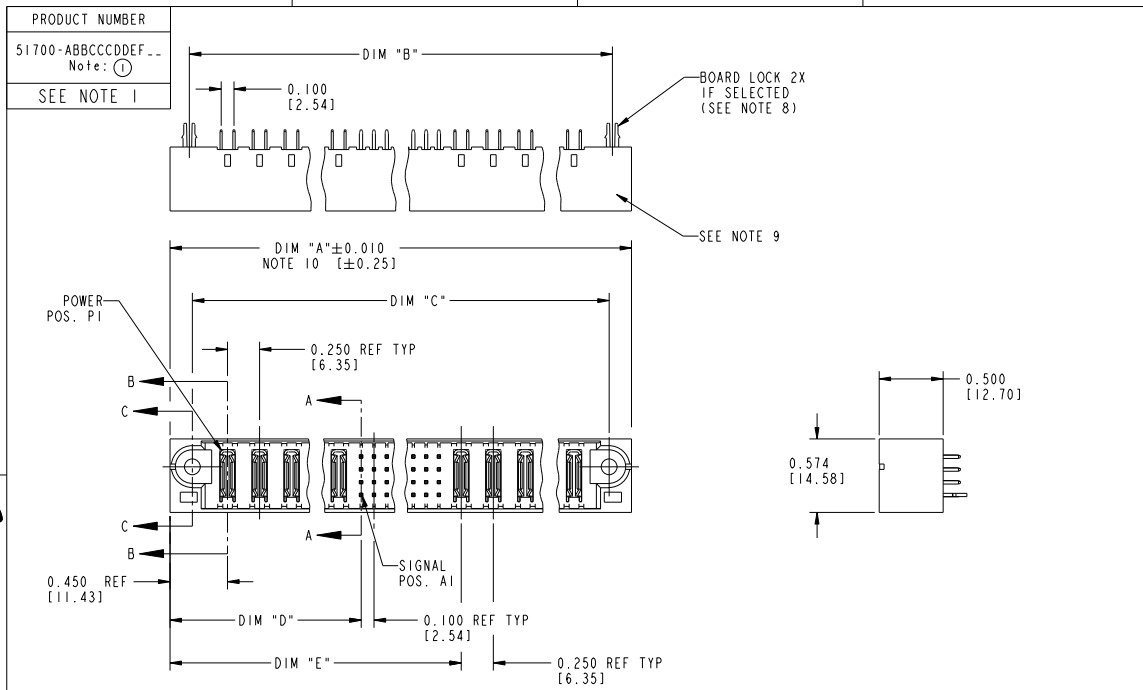


Tous droits strictement réservés. Reproduction ou communication à des tiers interdite sans autorisation écrite du propriétaire. Propriété de FCJ. Droits de reproduction FCJ.



All rights strictly reserved. Reproduction or issue to third parties in any form or by any means without written authority from the proprietor. Property of FCJ. Copyright FCJ.



mal'ti code		NOTE 2		tolerances unless otherwise specified		CUSTOMER		FCJ		www.fcjconnect.com	
itr	con no.	dr	date	linear	.XX±.01/0.X±0.3	projection	COPY	title VERTICAL HEADER w/ GUIDE PIN POWER / SIGNAL / POWER			
K	D605-0132	SJ	05/26/05		.XXX±.005/0.XX±0.13			product family PWRBLADE code 213			
L	D605-0435	SW	11/03/05	angles	.XXX±.0020/.XXX±.051			size dwg no 51700 sheet 1 of 3			
M	D605-0485	GvoJM	11/21/05		0°±2°			scale 1:1			
N	D608-0123	SH	05/19/08	dr	JRW 10-12-01			cage code 22526			
				engr	J.ALLISON 10-12-01						
				chr	J.ALLISON 10-12-01						
				appd	J.ALLISON 10-12-01						
sheet index	revision sheet	N	N	N							
		1	2	3							

Tous droits strictement réservés. Reproduction ou communication à des tiers interdite sans autorisation écrite du propriétaire. Property of FCJ. Droit de reproduction FCJ.

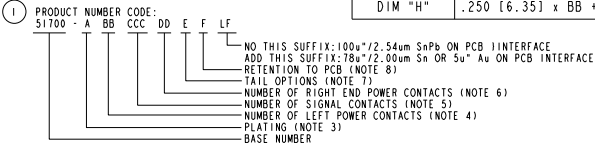


All rights strictly reserved. Reproduction or issue to third parties in any form or by any means without written authority from the proprietor. Property of FCJ. Copyright FCJ.

PRODUCT NUMBER
51700-ABBCCDDEF... Note: ①
SEE NOTE 1

DIM	LENGTH FORMULAS (SEE NOTE 10)
DIM "A"	.250 [6.35] x BB + .100 [2.54] x (CCC/4) + .250 [6.35] x DD + .650 [16.51] (NOTE 10)
DIM "B"	.250 [6.35] x BB + .100 [2.54] x (CCC/4) + .250 [6.35] x DD + .350 [8.89]
DIM "C"	.250 [6.35] x BB + .100 [2.54] x (CCC/4) + .250 [6.35] x DD + .300 [7.62]
DIM "D"	.250 [6.35] x BB + .375 [9.53]
DIM "E"	.250 [6.35] x BB + .100 [2.54] x (CCC/4) + .450 [11.43]
DIM "F"	.250 [6.35] x BB + .100 [2.54] x (CCC/4) + .250 [6.35] x DD + .680 [17.27]
DIM "G"	.250 [6.35] x BB + .225 [5.72]
DIM "H"	.250 [6.35] x BB + .100 [2.54] x (CCC/4) + .250 [6.35]

CONNECTOR NOTES



② HOUSING MATERIAL: UL 94 V-0 GLASS FILLED HIGH TEMP THERMOPLASTIC
POWER CONTACT MATERIAL: COPPER ALLOY
SIGNAL CONTACT MATERIAL: COPPER ALLOY

③ PLATING OPTION:
SEE PRINT 10064183 FOR PLATING SPEC OF 51700-ABBCCDDEF; 51700-ABBCCDDEF LF.

④ LEFT END POWER CONTACTS, 01 TO 20 AVAILABLE.
MAXIMUM OF 20 POWER CONTACTS PER CONNECTOR.

⑤ SIGNAL CONTACT, 004 TO 148 AVAILABLE.

⑥ RIGHT END POWER CONTACTS, 01 TO 20 AVAILABLE.
MAXIMUM OF 20 POWER CONTACTS PER CONNECTOR.

⑦ TAIL OPTIONS:
A = 0.135 +0.015/-0.010 [3.43 +0.38/-0.25] SOLDER TO BOARD
B = 0.165 +0.015/-0.010 [4.19 +0.38/-0.25] SOLDER TO BOARD
C = 0.165 +0.015/-0.010 [4.19 +0.38/-0.25] PRESS FIT

⑧ RETENTION TO PCB OPTIONS:
A = BOARD LOCK (REQUIRES 0.098 +0.002/-0.001 [2.49 +0.05/-0.03] THRU HOLE IN PCB).
RECOMMENDED ON SYMMETRIC CONNECTORS.
BOARD LOCK TO BE USED IN CONJUNCTION WITH A .052 PCB OR THICKER.
C = NO RETENTION FEATURE.

⑨ MANUFACTURE'S NAME, P/N, AND DATE CODE TO APPEAR ON THIS SURFACE.

⑩ THE MAXIMUM OVERALL LENGTH (DIM A) OF A PART IS 8.00 [203.2].

11 PRODUCT SPECIFICATION GS-12-149.

12 SEE PWRBLADE VERTICAL HEADER SPECIAL WORKSHEET (51696) FOR MATING LENGTH OPTIONS.

⑬ DIMENSIONS AND TOLERANCES ARE IN ACCORDANCE WITH ASME Y14.5m, 1994 UNLESS OTHERWISE SPECIFIED.

PCB NOTES:

14. ALL DIMENSIONS ARE BASIC UNLESS OTHERWISE SPECIFIED.

15. ALL THROUGH HOLES ARE LOCATED WITH A TRUE POSITION OF 0.004 [0.101]

16. ALL HOLE DIAMETERS ARE FINISHED HOLE SIZE

17. Ø.098 [2.49] THROUGH HOLES ARE UNPLATED.

18. Ø.0453±0.0010 [1.151±0.025] DRILLED HOLES PLATED WITH 0.003 [0.008] MIN SnPb OVER 0.001 [0.03] TO 0.003 [0.08] Cu PLATING TO ACHIEVE A Ø.040±0.003 [1.02±0.07] HOLE.

19. FOR PRESSFIT APPLICATION USE FCJ CAM TOOL 430169-XXX.

20. A Δ SYMBOL WILL BE NEXT TO ANY DIMENSION, VIEW, OR NOTE WHICH HAS BEEN MODIFIED WITH THE CURRENT DRAWING REVISION.

mal'1 code				NOTE 2		tolerances unless otherwise specified		CUSTOMER	
ltr	ecn no.	dr	date	linear	.XX±.01/0.X±0.3	projection	FCJ www.fcjconnect.com		
N				angles	.XXX±.005/0.XX±0.13 .XXX±.002/0.XX±.051 0°±2°	INCH/MM	VERTICAL HEADER w/ GUIDE PIN POWER / SIGNAL / POWER		
				dr	JRW 10-12-01	scale	product family	PWRBLADE	code
				eng	J.ALLISON 10-12-01	1:1	size	dwg no	213
				chr	J.ALLISON 10-12-01		A	51700	sheet
				appd	J.ALLISON 10-12-01				2
sheet index	revision sheet								

1 | 2

Pro/E

3 |

cage code 22526

4

PDM: Rev:N

STATUS:Released

Printed: Dec 20, 2010

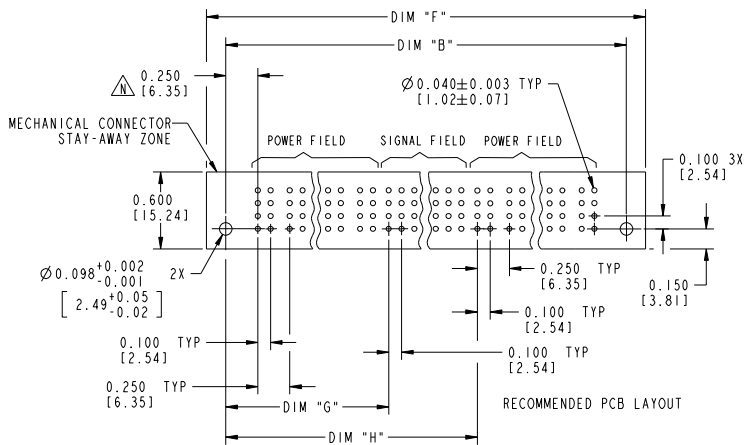
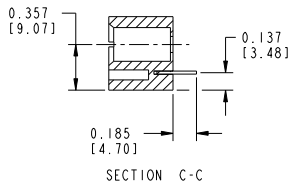
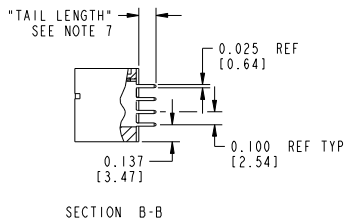
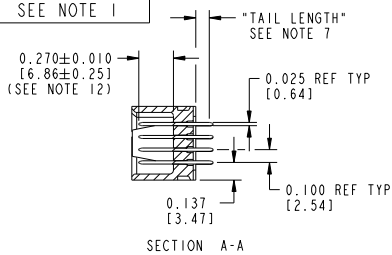
Tous droits strictement réservés. Reproduction ou communication à des tiers interdite sans autorisation écrite du propriétaire. Propriété de FCJ. Droits de reproduction FCJ.



All rights strictly reserved. Reproduction or issue to third parties in any form or by any means without written authority from the proprietor. Property of FCJ. Copyright FCJ.

PRODUCT NUMBER
51700-ABBCCDDEF...
Note:

SEE NOTE 1



mal'1 code		NOTE 2		tolerances unless otherwise specified		CUSTOMER		www.fcjconnect.com	
lfr	ecr no.	dr	date	linear	.XX±.01/0.X±0.3	projection	COPY	title VERTICAL HEADER w/ GUIDE PIN POWER / SIGNAL / POWER	
N				angles	.XXX±.005/0.XX±0.13 .XXX±.002/0.XX±.051			product family PWRBLADE code 213	
				dr	JRW 10-12-01	INCH/MM	scale	size	sheet 3
				engr	J.ALLISON 10-12-01			dwg no	51700
				chr	J.ALLISON 10-12-01				
				appd	J.ALLISON 10-12-01				
sheet index	revision sheet								

Pro/E

cage code 22526

PDM: Rev:N

STATUS:Released

Printed: Dec 20, 2010