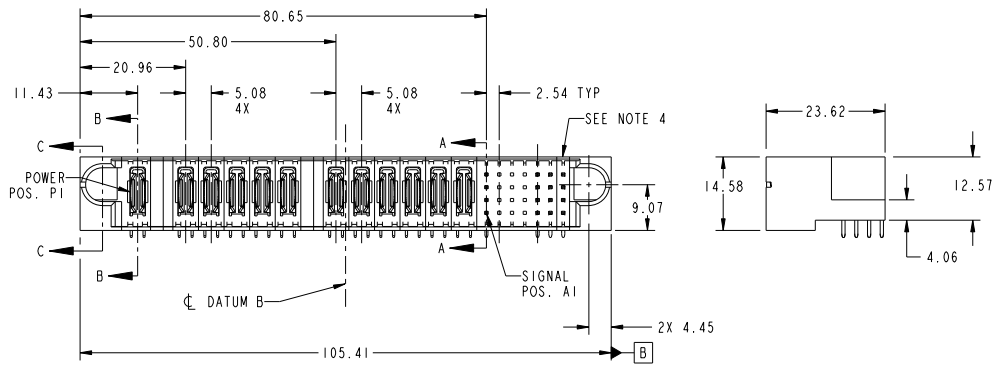
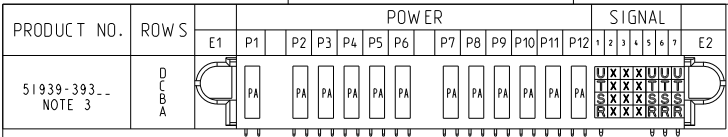


Tous droits strictement réservés. Reproduction ou communication à des tiers interdite sous quelque forme que ce soit sans autorisation écrite du propriétaire. Propriété de FCJ. Droits de reproduction FCJ.

All rights strictly reserved. Reproduction or issue to third parties in any form whatsoever is not permitted without written authority from the proprietor. Property of FCJ. Copyright FCJ.



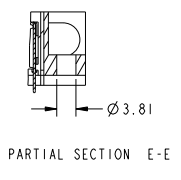
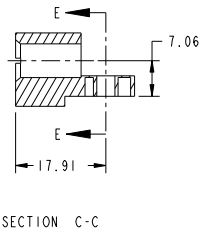
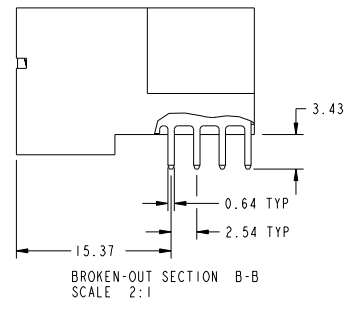
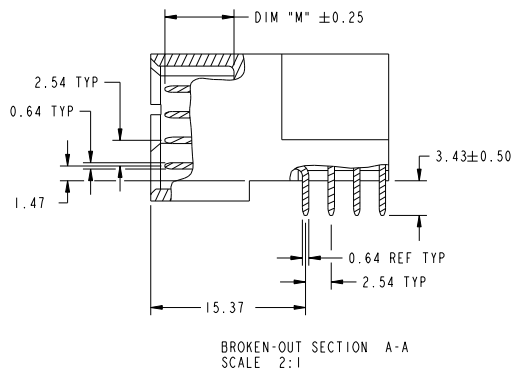
CODE	DIM "M" MATING LENGTH	CONTACT TYPE
U	[6.86]	SIGNAL
T	[6.86]	SIGNAL
S	[6.86]	SIGNAL
R	[6.86]	SIGNAL
PA	[N/A]	POWER
X		OMITTED

mat'l code				SEE NOTE		tolerances unless otherwise specified		CUSTOMER	
lfr	ecn no.	dr	date	linear	0.X ±0.5	projection	FCJ www.fcjconnect.com		
A	D009-0058	WD	03/02/09	angles	0.XX ±0.25	MM	title 12P + 28S		
				gr	0° ±2°	scale	RIGHT ANGLE SOLDER HEADER		
				eng	Warren Da 11/11/08		product family PwrBlade		
				chr	Warren Da 11/11/08		size dwg no 213		
				appd	Gary Hsieh 11/11/08		code 1 of 4		
					JOSEPH NS1A 11/11/08		A 51939-393		
sheet index	revision sheet	A	A	A	A		cage code 22526		
1	2	3	4						

Tous droits strictement réservés. Reproduction ou communication à des tiers interdite sous quelque forme que ce soit sans autorisation écrite du propriétaire. Propriété de FCJ. Droits de reproduction FCJ.

All rights strictly reserved. Reproduction or issue to third parties in any form whatsoever is not permitted without written authority from the proprietor. Property of FCJ. Copyright FCJ.

PRODUCT NUMBER
51939-393...
NOTE: 3



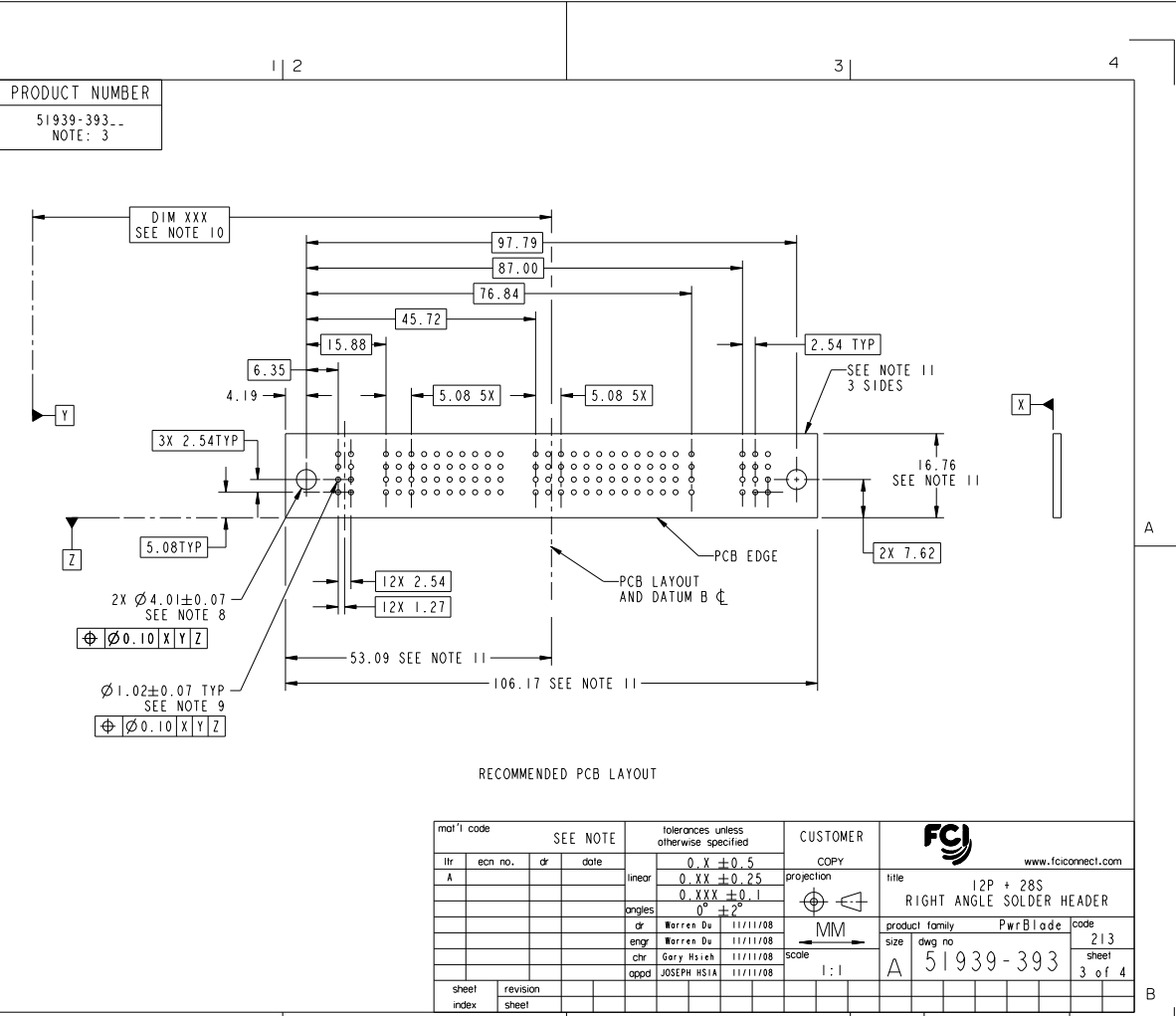
mat'l code		SEE NOTE		tolerances unless otherwise specified		CUSTOMER		FCJ		
ltr	ecm no.	dr	date	linear	0.X ±0.5	projection	COPY	www.fcjconnect.com		
A					0.XX ±0.25			title 12P + 28S		
				angles	0.XXX ±0.1				RIGHT ANGLE SOLDER HEADER	
					0° ±2°			product family	PwrBlade	code
				dr	Warren Da 11/11/08			size	dwg no	213
				eng	Warren Da 11/11/08			A	51939-393	sheet
				chr	Gary Hsieh 11/11/08		scale	1:1		2 of 4
sheet index	revision sheet			appd	JOSEPH HSIA 11/11/08					

1 | 2 | Pro/E | 3 | cage code 22526 | 4

Tous droits strictement réservés. Reproduction ou communication à des tiers interdite sous quelque forme que ce soit sans autorisation écrite du propriétaire. Propriété de c.FCI. Droits de reproduction FCI.



All rights strictly reserved. Reproduction or issue to third parties in any form whatsoever is not permitted without written authority from the proprietor. Property of FCI. Copyright FCI.



RECOMMENDED PCB LAYOUT

mat'l code		SEE NOTE		tolerances unless otherwise specified		CUSTOMER		FCI		www.fciconnect.com	
lfr	ecn no.	dr	date	linear	0.X ± 0.5	projection	COPY	title	12P + 28S		
A				angles	0.XX ± 0.25	MM		RIGHT ANGLE SOLDER HEADER			
				dr	0.XXX ± 0.1	scale		product family	PwrBlade	code	213
				eng	0 ± 2°	1:1		size	dwg no	sheet	3 of 4
				chr	Warren Da 11/11/08			A	51939-393		
				appd	Gary Hsieh 11/11/08						
sheet index	revision sheet				JOSEPH HSIA 11/11/08						

Pro/E 3 cage code 22526 4

Tous droits strictement réservés. Reproduction ou communication à des tiers interdite sous quelque forme que ce soit sans autorisation écrite du propriétaire. Propriété de FCJ. Droits de reproduction FCJ.



All rights strictly reserved. Reproduction or issue to third parties in any form, whatever is not permitted without written authority from the proprietor. Property of FCJ. Copyright FCJ.

PRODUCT NUMBER

51939-393_..
NOTE: 3

NOTES:

1. DIMENSIONS AND TOLERANCES ARE IN ACCORDANCE WITH ASME Y14.5M, 1994 UNLESS OTHERWISE SPECIFIED.

CONNECTOR NOTES:

- 2. HOUSING MATERIAL: UL 94 V-0 GLASS FILLED HIGH-TEMP THERMOPLASTIC
POWER CONTACT MATERIAL: COPPER ALLOY
SIGNAL PIN MATERIAL: COPPER ALLOY
 - 3. SEE ITEM 1 & 2 IN PRINT 10064183 FOR PLATING SPEC OF 51939-393 AND 51939-393LF RESPECTIVELY.
 - 4. MANUFACTURER'S NAME, P/N, AND DATE CODE TO APPEAR ON THIS SURFACE.
 - 5. PRODUCT SPECIFICATION GS-12-149.
APPLICATION SPECIFICATION BUS-20-067.
 - 6. PACKAGED IN TRAYS.
- PCB NOTES:
- 7. ALL HOLE DIAMETERS ARE FINISHED HOLE SIZE.
 - 8. MOUNTING HOLES, WHERE APPLICABLE, ARE UNPLATED.
 - 9. $\varnothing 1.151 \pm 0.025$ DRILLED HOLES PLATED WITH
0.008 MIN SnPb OR Sn OVER 0.03
TO 0.08 Cu PLATING TO ACHIEVE
 $\varnothing 1.02 \pm .07$ HOLE.
 - 10. "DIM XXX" TO BE DETERMINED BY THE CUSTOMER.
 - 11. CONNECTOR KEEP-OUT ZONE.

mat'l code		SEE NOTE		tolerances unless otherwise specified		CUSTOMER		FCJ	
litr	ecm no.	dr	date	linear	angles	projection	title	product family	code
A				$0.X \pm 0.5$	$0^{\circ} \pm 2^{\circ}$		12P + 28S	PwrBlade	213
				$0.XX \pm 0.25$			RIGHT ANGLE SOLDER HEADER		sheet
				$0.XXX \pm 0.1$		scale			4 of 4
				$0^{\circ} \pm 2^{\circ}$		1:1			
				dr Warren Da 11/11/08					
				eng Warren Da 11/11/08					
				chr Gary Hsieh 11/11/08					
				appd JOSEPH HSIA 11/11/08					
sheet index	revision sheet								

case code 22526

PDM: Rev:A

STATUS:Released

Printed: Dec 20, 2010