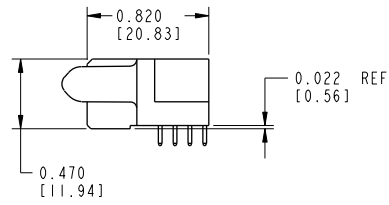
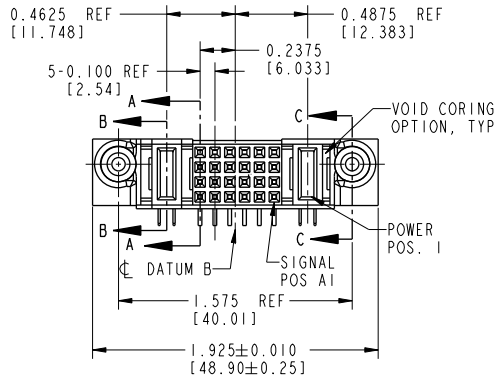
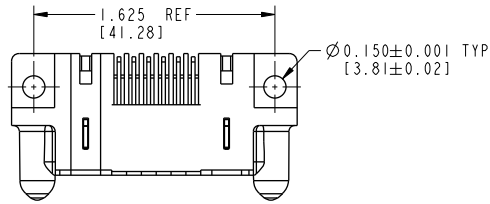


Tous droits strictement réservés. Reproduction ou communication à des tiers interdite sous quelque forme que ce soit sans autorisation écrite du propriétaire. Propriété de c FCI. Droits de reproduction FCI.



All rights strictly reserved. Reproduction or issue to third parties in any form whatever is not permitted without written authority from the proprietor. Property of FCI. Copyright FCI.

PRODUCT No.	ROWS	POWER		SIGNAL					POWER		
51627-002-- NOTE: 2	D C B A	E2	P2	6	5	4	3	2	1	P1	E1
				H	H	H	H	H	H	P	
				G	G	G	G	G	G		
				F	F	F	F	F	F		
				E	E	E	E	E	E		



CODE	DIM "M" MATING LENGTH	CONTACT TYPE
PA	0.042	POWER
PC	0.092	POWER
E	N/A	SIGNAL
F	N/A	SIGNAL
G	N/A	SIGNAL
H	N/A	SIGNAL

mat'l code				SEE NOTES	tolerances unless otherwise specified	CUSTOMER	CONFIDENTIAL	
lfr	ecr no.	dr	date	linear	.XX±.01/0.X±0.3	COPY	www.fciconnect.com	
A	DG06-0159	JMG	04/10/06	angles	.XXX±.005/0.XX±0.13	projection	title IP + 24S + IP	
				dr	.XXXX±.0005/0.XXX±.051	MM	RIGHT ANGLE SOLDER RECEPTACLE	
				enr	JM GUO 04/10/06	scale	product family	PwrBlade
				chr	SLUO 04/10/06	1:1	size	dwg no
				appd	BEER FU 04/10/06		A	51627-002
					JOSEPH HSIA 04/10/06		code	213
sheet index	revision sheet	A	A	A			sheet	1 of 3
		1	2	3				

Pro/E

PDM: Rev:A

STATUS: Released

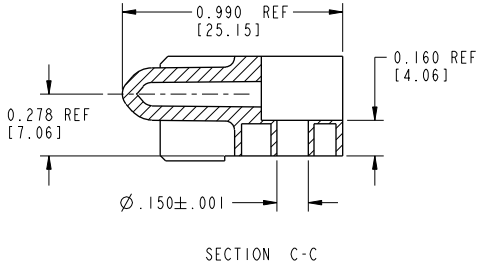
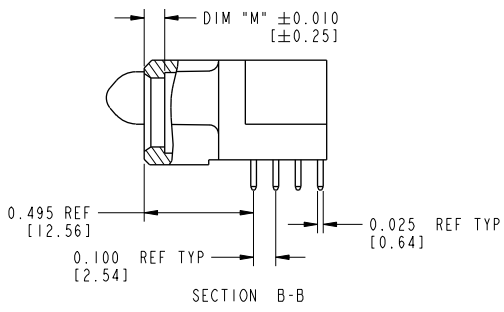
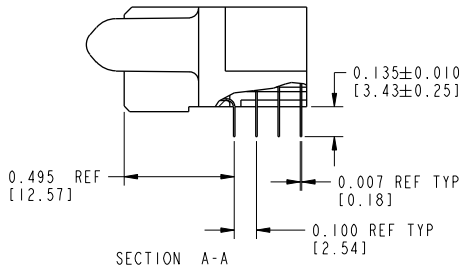
Printed: Dec 20, 2010

Tous droits strictement réservés. Reproduction ou communication à des tiers interdite sous quelque forme que ce soit sans autorisation écrite du propriétaire. Propriété de c FCI. Droits de reproduction FCI.

All rights strictly reserved. Reproduction or issue to third parties in any form whatever is not permitted without written authority from the proprietor. Property of FCI. Copyright FCI.



PRODUCT NUMBER
51627-002--
NOTE: 2



CONNECTOR NOTES:

1. HOUSING MATERIAL: UL 94 V-0 GLASS FILLED HIGH TEMP THERMOPLASTIC
POWER CONTACT MATERIAL: COPPER ALLOY
SIGNAL CONTACT MATERIAL: COPPER ALLOY
 2. 51627-002;51627-002LF;51627-002GLF PLATING SPEC. SEE PRINT:10064183
 3. "MANUFACTURER" NAME, P/N, AND DATE CODE TO APPEAR ON THIS SURFACE
 4. PRODUCT SPECIFICATION GS-12-149
- PCB NOTES:
5. ALL DIMENSIONS ARE BASIC UNLESS OTHERWISE SPECIFIED.
 6. ALL THROUGH HOLES ARE LOCATED WITH A TRUE POSITION OF 0.004 [0.10]
 7. ALL HOLE DIAMETERS ARE FINISHED HOLE SIZE
 8. Ø0.158[4.01] THROUGH HOLES ARE UNPLATED.
 9. Ø0.0453±0.0010 [1.151±0.025] DRILLED HOLES PLATED WITH 0.0003 [0.008] MIN SnPb OVER 0.001 [0.03] TO 0.003 [0.08] Cu PLATING TO ACHIEVE A Ø0.040±0.003 [1.02±0.07] HOLE.

CONFIDENTIAL

mat'l code				SEE NOTES		tolerances unless otherwise specified		CUSTOMER		www.fciconnect.com	
lfr	ecr no.	dr	date	linear	.XX±.01/0.XX±0.3	projection	COPY		title		
A				angles	.XXX±.005/0.XX±0.13		IP + 24S + IP		RIGHT ANGLE SOLDER RECEPTACLE		
				dr	.XXXX±.0005/0.XXX±.051		INCH/MM		product family		code
				enr	JM GUO	date drawn	3:2		PwrBlade		213
				chr	SLUO	04/10/06	A		size		sheet
				appd	BEER FU	04/10/06	51627-002		dwg no		2
					JOSEPH HSIA	04/10/06					
sheet index	revision sheet										

Pro/E

PDM: Rev:A

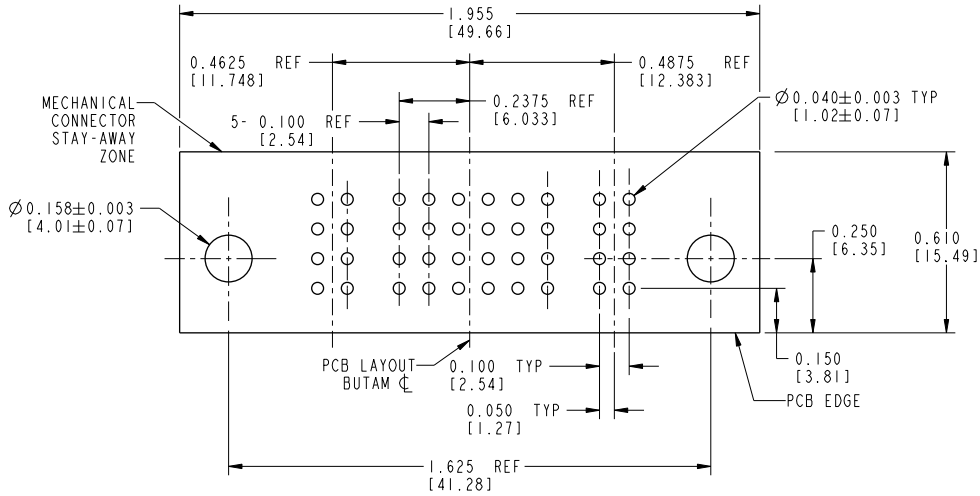
STATUS: Released
code code 25566
Printed: Dec 20, 2010

Tous droits strictement réservés. Reproduction ou communication à des tiers interdite sous quelque forme que ce soit sans autorisation écrite du propriétaire. Propriété de c FCI. Droits de reproduction FCI.

All rights strictly reserved. Reproduction or issue to third parties in any form whatever is not permitted without written authority from the proprietor. Property of FCI. Copyright FCI.



PRODUCT NUMBER
51627-002--
NOTE: 2



CONFIDENTIAL

mat'ri code		SEE NOTES		tolerances unless otherwise specified		CUSTOMER		 www.fciconnect.com	
lfr	ecn no.	dr	date	linear	.XX \pm .01/0.XX \pm 0.3	projection	COPY	title	IP + 24S + IP
A				angles	.XXX \pm .005/0.XX \pm 0.13	INCH/MM		RIGHT ANGLE SOLDER RECEPTACLE	
				dr	.XXXX \pm .0005/0.XXX \pm .051	scale		product family	PwrBlade
				enr	0 $^{\circ}$ \pm 2 $^{\circ}$	1:1		size	213
				chr	JM GUO 04/10/06			dwg no	3
				appd	SLUO 04/10/06			A	51627-002
					BEER FU 04/10/06				
					JOSEPH HSIA 04/10/06				
sheet index	revision sheet								

Pro/E

PDM: Rev:A

STATUS: Released
Printed: Dec 20, 2010