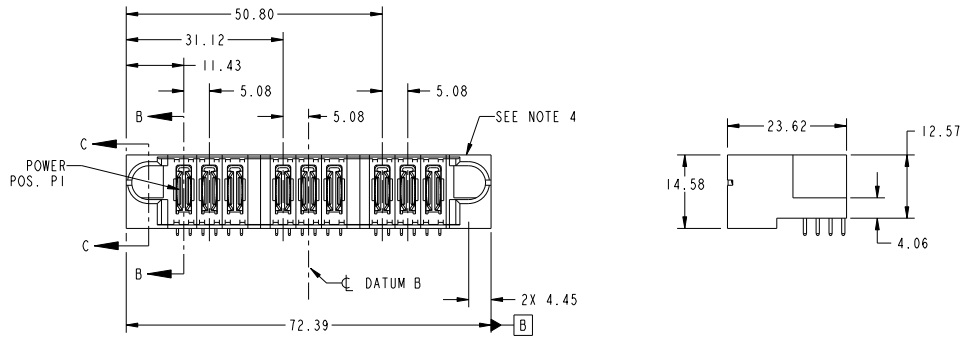
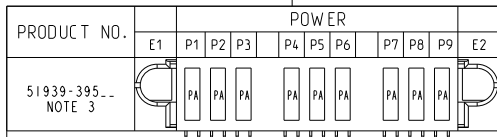


Tous droits strictement réservés. Reproduction ou communication à des tiers interdite sous quelque forme que ce soit sans autorisation écrite du propriétaire. Propriété de FCJ. Droits de reproduction FCJ.



All rights strictly reserved. Reproduction or issue to third parties in any form without written authority from the proprietor. Property of FCJ. Copyright FCJ.



CODE	DIM "M" MATING LENGTH	CONTACT TYPE
PA	[N/A]	POWER

mat'l code		SEE NOTE		tolerances unless otherwise specified		CUSTOMER		FCJ	
ltr	ecn no.	dr	date	linear	0.X ±0.5	projection	COPY	title	www.fcjconnect.com
A	D609-0058	WD	03/04/09		0.XX ±0.25			9P	
				angles	0.XXX ±0.1			RIGHT ANGLE SOLDER HEADER	
				gr	0° ±2°			product family	PwrBlade
				eng	Warren Du 11/11/08			size	213
				chr	Warren Du 11/11/08			dwg no	1 of 4
				appd	Gary Hsieh 11/11/08			code	
					JOSEPH HSIA 11/11/08			scale	
sheet index	revision sheet	A	A	A	A			A	51939-395

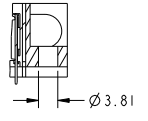
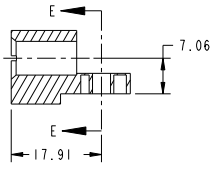
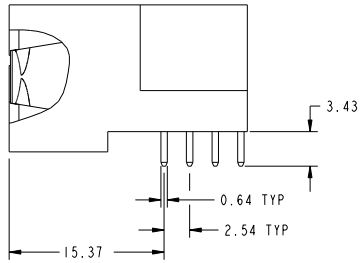
1 2		Pro/E	3	code code	22526	4
-------	--	-------	---	-----------	-------	---

Tous droits strictement réservés. Reproduction ou communication à des tiers interdite sous quelque forme que ce soit sans autorisation écrite du propriétaire. Propriété de FCJ. Droits de reproduction FCJ.



All rights strictly reserved. Reproduction or issue to third parties in any form whatsoever is not permitted without written authority from the proprietor. Property of FCJ. Copyright FCJ.

PRODUCT NUMBER
51939-395_..
NOTE: 3



SECTION C-C

PARTIAL SECTION E-E

mat'l code		SEE NOTE		tolerances unless otherwise specified		CUSTOMER		FCJ		www.fcjconnect.com		
itr	ecm no.	dr	date	linear	0.X ±0.5	projection	COPY	title	9P			
A					0.XX ±0.25			RIGHT ANGLE SOLDER HEADER				
				angles	0.XXX ±0.1			product family	PwrBlade		code	
				gr	Horres Da 11/11/08			size	dwg no	213		
				eng	Horres Da 11/11/08			scale	A 51939-395		sheet	
				chr	Gary Hsieh 11/11/08			1:1			2 of 4	
				appd	JOSEPH HSIA 11/11/08							
sheet index	revision sheet											

Pro/E

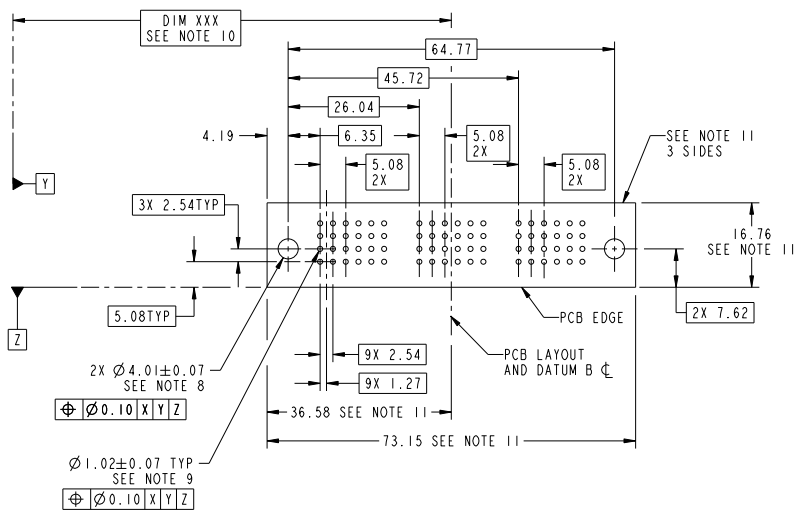
code code 22526

Tous droits strictement réservés. Reproduction ou communication à des tiers interdite sous quelque forme que ce soit sans autorisation écrite du propriétaire. Propriété de FCJ. Droits de reproduction FCJ.



All rights strictly reserved. Reproduction or issue to third parties in any form whatsoever is not permitted without written authority from the proprietor. Property of FCJ. Copyright FCJ.

PRODUCT NUMBER
51939-395...
NOTE: 3



RECOMMENDED PCB LAYOUT

mat'l code		SEE NOTE		tolerances unless otherwise specified		CUSTOMER		FCJ		www.fcjconnect.com	
itr	ecm no.	dr	date	linear	0.X ± 0.5	COPY		projection	title	9P	
A					0.XX ± 0.25				RIGHT ANGLE SOLDER HEADER		
				angles	0.XXX ± 0.1					PwrBlade	code
				dr	0° ± 2°				product family		213
				eng	Warren Da 11/11/08				size	dwg no	3 of 4
				chr	Gary Hsieh 11/11/08				A	51939-395	
				appd	JOSEPH HSIA 11/11/08			scale			
sheet index	revision sheet										

Pro/E

cage code 22526

Tous droits strictement réservés. Reproduction ou communication à des tiers interdite sous quelque forme que ce soit sans autorisation écrite du propriétaire. Propriété de c.FCI. Droits de reproduction FCI.



All rights strictly reserved. Reproduction or issue to third parties in any form, whatever is not permitted without written authority from the proprietor. Property of FCI. Copyright FCI.

PRODUCT NUMBER
51939-395_
NOTE: 3

NOTES:

1. DIMENSIONS AND TOLERANCES ARE IN ACCORDANCE WITH ASME Y14.5M, 1994 UNLESS OTHERWISE SPECIFIED.

CONNECTOR NOTES:

- 2. HOUSING MATERIAL: UL 94 V-0 GLASS FILLED HIGH-TEMP THERMOPLASTIC
POWER CONTACT MATERIAL: COPPER ALLOY
SIGNAL PIN MATERIAL: COPPER ALLOY
 - 3. SEE ITEM 1 & 2 IN PRINT 10064183 FOR PLATING SPEC OF 51939-395 AND 51939-395LF RESPECTIVELY.
 - 4. MANUFACTURER'S NAME, P/N, AND DATE CODE TO APPEAR ON THIS SURFACE.
 - 5. PRODUCT SPECIFICATION GS-12-149.
APPLICATION SPECIFICATION BUS-20-067.
 - 6. PACKAGED IN TRAYS.
- PCB NOTES:
- 7. ALL HOLE DIAMETERS ARE FINISHED HOLE SIZE.
 - 8. MOUNTING HOLES, WHERE APPLICABLE, ARE UNPLATED.
 - 9. $\varnothing 1.151 \pm 0.025$ DRILLED HOLES PLATED WITH
0.008 MIN SnPb OR Sn OVER 0.03
TO 0.08 Cu PLATING TO ACHIEVE
 $\varnothing 1.02 \pm .07$ HOLE.
 - 10. "DIM XXX" TO BE DETERMINED BY THE CUSTOMER.
 - 11. CONNECTOR KEEP-OUT ZONE.

mat'l code		SEE NOTE		tolerances unless otherwise specified		CUSTOMER		FCI	
litr	ecm no.	dr	date	linear	angles	projection	title	product family	code
A				$0.X \pm 0.5$	$0^{\circ} \pm 2^{\circ}$		RIGHT ANGLE SOLDER HEADER	PwrBlade	213
				$0.XX \pm 0.25$	$0^{\circ} \pm 2^{\circ}$				
				$0.XXX \pm 0.1$			A	51939-395	4 of 4
				$0^{\circ} \pm 2^{\circ}$					
				gr Warren Da 11/11/08					
				eng Warren Da 11/11/08					
				chr Gary Hsieh 11/11/08					
				appd JOSEPH HSIA 11/11/08					
sheet index	revision sheet								

1 | 2

Pro/E

3 |

case code 22526

4

PDM: Rev:A

STATUS:Released

Printed: Dec 20, 2010