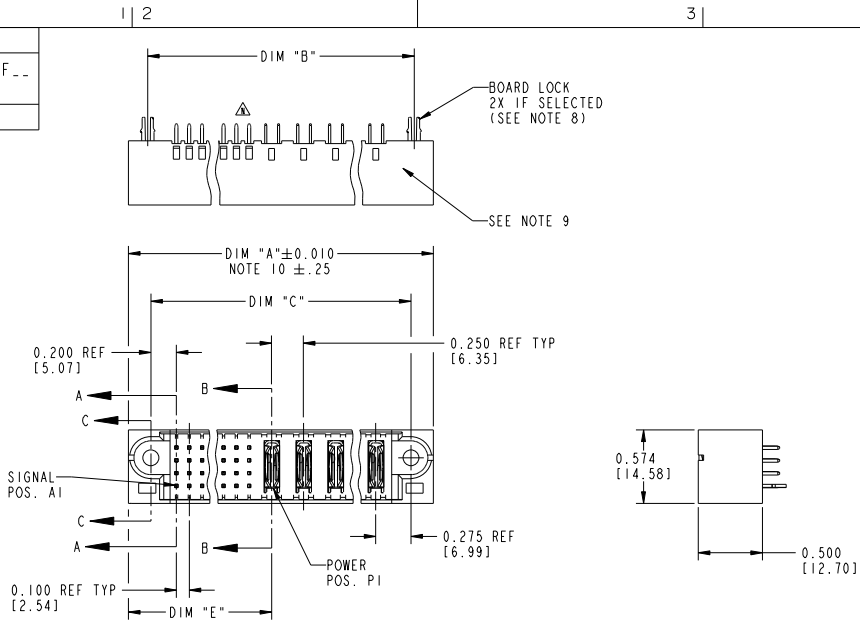


Tous droits strictement réservés. Reproduction ou communication à des tiers interdite sans autorisation écrite du propriétaire. Property of FCJ. Droit de reproduction FCJ.



All rights strictly reserved. Reproduction or issue to third parties in any form or by any means without written authority from the proprietor. Property of FCJ. Copyright FCJ.

PRODUCT NUMBER
51701-A00CCDDEF..
Note: ①
SEE NOTE 1



mal'1 code		SEE NOTE 2	tolerances unless otherwise specified	CUSTOMER	www.fcjconnect.com
lir	ecn no.	dr	date	COPY	
J	DG05-0132	SJ	05/30/05	linear	
K	DG06-0505	CS	01/13/05	angles	
L	DG08-0239	JC	09/11/08		
M	DG09-0231	JW	07/14/09		
N	DG10-0078	AL	02/23/10		product family size dwg no
sheet index	revision sheet	N	N	N	product family size
		1	2	3	dwg no
					scale
					1:1

title		PWRBLADE		code
VERTICAL HEADER w/ GUIDE PIN		SIGNAL / POWER		213
sheet		1 of 3		
cage code		22526		

Pro/E

PDM: Rev:N

STATUS:Released

Printed: Dec 20, 2010

Tous droits strictement réservés. Reproduction ou communication à des tiers interdite sans autorisation écrite du propriétaire. Property of FCJ. Droit de reproduction FCJ.



All rights strictly reserved. Reproduction or issue to third parties in any form or by any means without written authority from the proprietor. Property of FCJ. Copyright FCJ.

PRODUCT NUMBER
51701-A00CCDDEF.. Note: ①
SEE NOTE 1

DIM	LENGTH FORMULAS (SEE NOTE 10)
DIM "A"	.100 [2.54] x (CCC/4) + .250 [6.35] x DD + .650 [16.51] (NOTE 10)
DIM "B"	.100 [2.54] x (CCC/4) + .250 [6.35] x DD + .350 [8.89]
DIM "C"	.100 [2.54] x (CCC/4) + .250 [6.35] x DD + .300 [7.62]
DIM "E"	.100 [2.54] x (CCC/4) + .450 [11.43]
DIM "F"	.100 [2.54] x (CCC/4) + .250 [6.35] x DD + .680 [17.27]
DIM "H"	.100 [2.54] x (CCC/4) + .250 [6.35]

CONNECTOR NOTES

- PRODUCT NUMBER CODE:  
51701 - A 00 CCC DD E F LF

NO THIS SUFFIX: 100"/2.54um SnPB ON PCB INTERFACE  
ADD THIS SUFFIX: 18u"/2.00um Sn ON PCB INTERFACE  
RETENTION TO PCB (NOTE 8)  
TAIL OPTIONS (NOTE 7)  
NUMBER OF RIGHT END POWER CONTACTS (NOTE 6)  
NUMBER OF SIGNAL CONTACTS (NOTE 5)  
ALWAYS "00" (ZERO, ZERO) (NOTE 4)  
PLATING (NOTE 3)  
BASE NUMBER
- HOUSING MATERIAL: UL94 V-0 GLASS FILLED HIGH TEMP THERMO PLASTIC.  
SIGNAL CONTACT MATERIAL: COPPER ALLOY  
POWER CONTACT MATERIAL: COPPER ALLOY
- PLATING OPTION:  
1-SEE PRINT 10064183 FOR PLATING SPEC OF 51701-100CCDDEF; 51701-100CCDDEF LF
- THIS PART NOT AVAILABLE WITH LEFT SIDE POWER CONTACTS.
- SIGNAL CONTACT, 004 TO 148 AVAILABLE.
- RIGHT END POWER CONTACTS, 01 - 20 AVAILABLE.
- TAIL OPTIONS:  
A = 0.135 +0.015/-0.010 [3.43 +.38/- .25] SOLDER TO BOARD  
B = 0.165 +0.015/-0.010 [4.19 +.38/- .25] SOLDER TO BOARD  
C = 0.165 +0.015/-0.010 [4.19 +.38/- .25] PRESS FIT
- RETENTION TO PCB OPTIONS:  
A = BOARD LOCK (REQUIRES 0.099 ± .002/- .001 [2.49 +0.05/-0.03] THRU HOLE IN PCB). (NOT AVAILABLE WITH PRESS FIT)  
C = NO RETENTION FEATURE (ALL PRESS FIT).
- MANUFACTURE'S NAME, P/N, AND DATE CODE TO APPEAR ON THIS SURFACE.
10. THE MAXIMUM OVERALL LENGTH (DIM A) OF A PART IS 8.00 [203.2]
11. PRODUCT SPECIFICATION GS-12-149
12. SEE PWRBLADE VERTICAL HEADER SPECIAL WORKSHEET (51696) FOR MATING LENGTH OPTIONS.
13. DIMENSIONS AND TOLERANCES ARE IN ACCORDANCE WITH ASME Y14.5M, 1994 UNLESS OTHERWISE SPECIFIED.

PCB NOTES:

- ALL DIMENSIONS ARE BASIC UNLESS OTHERWISE SPECIFIED.
- ALL THROUGH HOLES ARE LOCATED WITH A TRUE POSITION OF 0.004 [0.10]
- ALL HOLE DIAMETERS ARE FINISHED HOLE SIZE.
- Ø 0.098 [2.49] THROUGH HOLES ARE UNPLATED
- Ø 0.0453 ± 0.0010 [1.151 ± 0.025] DRILLED HOLES PLATED WITH 0.0003 [0.008] MIN SnPB OVER 0.001 [0.03] TO 0.003 [0.08] Cu PLATING TO ACHIEVE A Ø 0.040 ± 0.003 [1.02 ± 0.07] HOLE.
- FOR PRESS FIT APPLICATION USE FCJ CAM TOOL 430169-XXX.
- A SYMBOL WILL BE NEXT TO ANY DIMENSION, VIEW, OR NOTE WHICH HAS BEEN MODIFIED WITH THE CURRENT DRAWING REVISION.

mal'1 code		SEE NOTE 2		tolerances unless otherwise specified		CUSTOMER		FCJ		www.fcjconnect.com	
ltr	ecn no.	dr	date	linear	.XX±.01/0.X±0.3	projection	COPY	title VERTICAL HEADER w/ GUIDE PIN SIGNAL / POWER			
N				angles	.XXX±.005/0.XX±0.13 .XXX±.0020/.XXX±.051			product family PWRBLADE code 213			
				dr	JRW 10-15-01	INCH/MM		size dwg no 51701 sheet 2			
				eng	J.ALLISON 10-15-01	scale					
				chr	J.ALLISON 10-15-01						
				appd	J.ALLISON 10-15-01						
sheet index	revision sheet										

1 | 2

Pro/E

3 |

cage code 22526

4

PDM: Rev:N

STATUS:Released

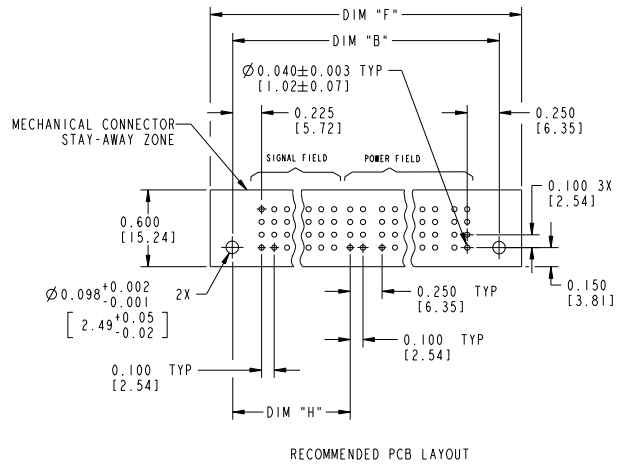
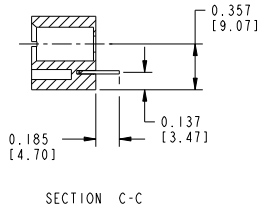
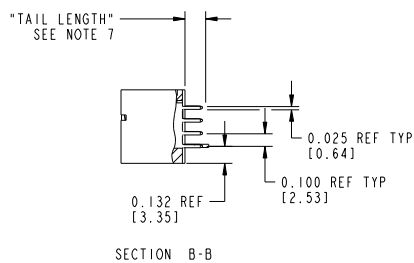
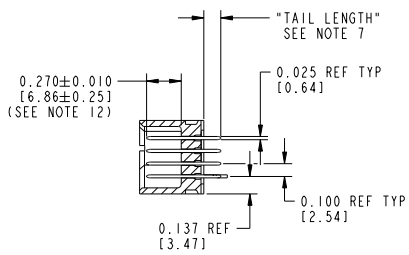
Printed: Dec 20, 2010

Tous droits strictement réservés. Reproduction ou communication o des tiers interdite sans autorisation écrite du propriétaire. Property of FCJ. Droit de reproduction FCJ.



All rights strictly reserved. Reproduction or issue to third parties in any form or by any means without written authority from the proprietor. Property of FCJ. Copyright FCJ.

PRODUCT NUMBER
51701-A00CCDDEF..
Note: ①
SEE NOTE 1



mal'1 code		SEE NOTE 2	tolerances unless otherwise specified	CUSTOMER	www.fcjconnect.com
lfr	ecn no.	dr	date	COPY	
N				projection	title
					VERTICAL HEADER w/ GUIDE PIN SIGNAL / POWER
				INCH/MM	product family
				scale	PWRBLADE
				1:1	code
sheet index	revision sheet			A	51701
					213
					3

Pro/E

cage code 22526

PDM: Rev:N

STATUS:Released

Printed: Dec 20, 2010