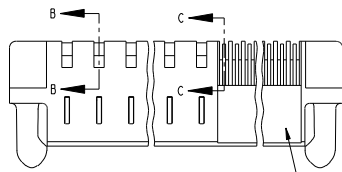


Tous droits strictement réservés. Reproduction ou communication à des tiers sans autorisation écrite du propriétaire. Property of FCJ. Droits de reproduction FCJ.

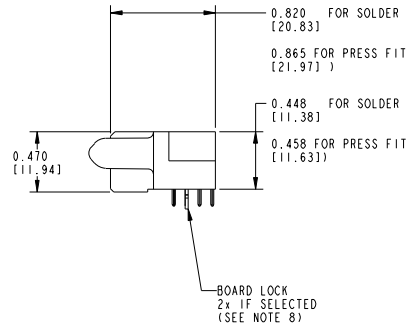
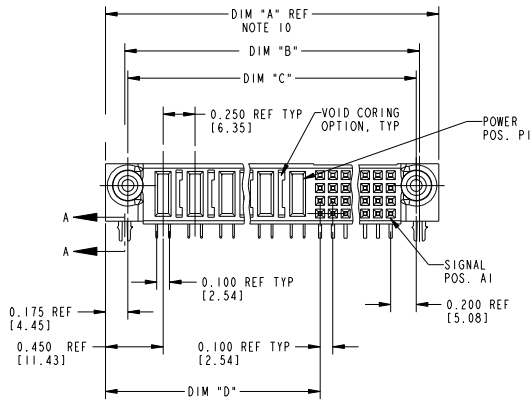


All rights strictly reserved. Reproduction or issue to third parties in any form or by any means without written authority from the proprietor. Property of FCJ. Copyright FCJ.

PRODUCT NUMBER  
51761-A00CCDDEF...  
NOTE 1  
SEE NOTE 1



SEE NOTE 9



THIS FILE WAS ORIGINALLY CREATED IN THE PRO ENGINEER ENVIRONMENT AND ANY FUTURE REVISIONS TO THIS FILE MUST BE MADE IN THE PRO ENGINEER ENVIRONMENT

mat'l code SEE NOTE 2				tolerances unless otherwise specified		CUSTOMER	FCJ	www.fciconnect.com	
lfr	ecn no.	dr	date	linear	.XX±.01/.X±.3	projection COPY	title RIGHT ANGLE RECEPTACLE w/GUIDE PIN SIGNAL/ POWER	product family PWRBLADE	code 213
E	0607-0059	BTAM	02/12/07		.XXX±.005/.XX±.13				
L	0607-0061	JUL14	02/14/07	angles	.XXXX±.0020/.XXX±.051	INCH / MM scale 1:1	size A	dwg no 51761	SHEET 1 OF 3
M	0608-0239	JC	09/11/08		0°±.2°				
N	0609-0120	JW	04/23/09	dr	DIBOLE 05-18-99				
				eng	J. BROWN 05-18-99				
				chr	J. BROWN 05-18-99				
				appd	J. BROWN 05-18-99				
sheet index	revision sheet	N	N	N					
		1	2	3					

form no. 7530-001-I03

cage code 22526

PDM: Rev:N

STATUS:Released

Printed: Dec 20, 2010

Tous droits strictement réservés. Reproduction ou communication à des tiers sans autorisation écrite du propriétaire. Property of FCJ. Droit de reproduction FCJ.

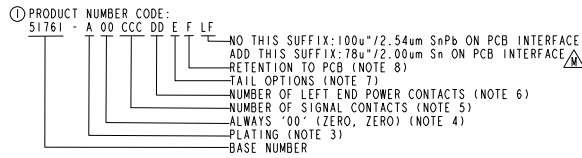


All rights strictly reserved. Reproduction or issue to third parties in any form or by any means without written authority from the proprietor. Property of FCJ. Copyright FCJ.

PRODUCT NUMBER
51761-A00CCDDEF... NOTE 1
SEE NOTE 1

DIM	LENGTH FORMULAS (SEE NOTE 10)
DIM "A"	.250 [6.35] x DD + .100 [2.54] x (CCC/4) + .650 [16.51] (NOTE 10)
DIM "B"	.250 [6.35] x DD + .100 [2.54] x (CCC/4) + .350 [8.89]
DIM "C"	.250 [6.35] x DD + .100 [2.54] x (CCC/4) + .300 [7.62]
DIM "D"	.250 [6.35] x DD + .375 [9.35]
DIM "F"	.250 [6.35] x DD + .100 [2.54] x (CCC/4) + .680 [17.27]
DIM "G"	.250 [6.35] x DD + .225 [5.72]

CONNECTOR NOTES



- 1. PRODUCT NUMBER CODE:  
51761 - A 00 CCC DD E F LF  
NO THIS SUFFIX: 100u"/2.54um SnPb ON PCB INTERFACE  
ADD THIS SUFFIX: 78u"/2.00um Sn ON PCB INTERFACE  
RETENTION TO PCB (NOTE 8)  
TAIL OPTIONS (NOTE 7)  
NUMBER OF LEFT END POWER CONTACTS (NOTE 6)  
NUMBER OF SIGNAL CONTACTS (NOTE 5)  
ALWAYS '00' (ZERO, ZERO) (NOTE 4)  
PLATING (NOTE 3)  
BASE NUMBER
- 2. HOUSING MATERIAL: GLASS FILLED V-O HIGH TEMP THERMO PLASTIC.  
SIGNAL CONTACT MATERIAL: COPPER ALLOY  
POWER CONTACT MATERIAL: COPPER ALLOY
- 3. PLATING OPTION:  
SEE PRINT 10064183 FOR PLATING SPEC OF 51761-100CCDDEF; 51761-100CCDDEF LF
- 4. THIS PART IS NOT AVAILABLE WITH RIGHT SIDE POWER CONTACTS.
- 5. SIGNAL CONTACTS, 004 TO 148 AVAILABLE FOR SOLDER TO BOARD.  
012 TO 148 AVAILABLE FOR PRESS FIT TO BOARD.
- 6. LEFT END POWER CONTACTS, 01 TO 20 AVAILABLE.  
MAXIMUM OF 20 POWER CONTACTS PER CONNECTOR
- 7. TAIL OPTIONS:  
A = .135 ± .010 [3.43 ± 0.25] SOLDER TO BOARD  
B = .090 ± .005 / -.010 [2.29 +0.13 / -0.25] SOLDER TO BOARD  
C = .154 ± .010 [3.91 ± 0.25] PRESS FIT TO BOARD

- 8. RETENTION TO PCB OPTIONS:  
A = BOARD LOCK (REQUIRES .098 ± .002 / -.001 [2.49 +0.05 / -0.03] THRU HOLE IN PCB MOUNTING FOOT HEIGHT: .220 [5.59])  
B = .150 [3.81] THRU HOLE (REQUIRES .158 ± 0.003 [4.01 ± 0.08] THRU HOLE IN PCB). MOUNTING FOOT HEIGHT .160 [4.06]
- 9. MANUFACTURE'S NAME, P/N, AND DATE CODE TO APPEAR ON THIS SURFACE.
- 10. THE MAXIMUM OVERALL LENGTH (DIM A) OF A PART IS 8.00 [203.2]
- 11. PRODUCT SPECIFICATION GS-12-149
- 12. APPLICATION SPECIFICATION BUS-20-067.
- 13. FOR PRESS FIT CONNECTORS USE FCJ CAM TOOL 430140-XXX TO APPLY CONNECTOR TO IPCB.

PCB NOTES:

- 14. ALL DIMENSIONS ARE BASIC UNLESS OTHERWISE SPECIFIED.
- 15. ALL THROUGH HOLES ARE LOCATED WITH A TRUE POSITION OF .004 [0.10]
- 16. ALL HOLE DIAMETERS ARE FINISHED HOLE SIZE.
- 17. Ø 0.0453 ± .001 [1.151 ± 0.02] DRILLED HOLES PLATED WITH 0.0003 [0.007] MIN SnPb OR Sn OVER 0.001 [0.03] TO .003 [0.08] Cu PLATING TO ACHIEVE A .040 ± .003 [1.02 ± 0.08] HOLE.
- 18. A Δ SYMBOL WILL BE NEXT TO ANY DIMENSION, VIEW, OR NOTE WHICH HAS BEEN MODIFIED WITH THE CURRENT DRAWING REVISION.

THIS FILE WAS ORIGINALLY CREATED IN THE PRO ENGINEER ENVIRONMENT AND ANY FUTURE REVISIONS TO THIS FILE MUST BE MADE IN THE PRO ENGINEER ENVIRONMENT

mat'l code		tolerances unless otherwise specified		CUSTOMER COPY		FCJ www.fcjconnect.com	
ltr	ecm no.	dr	date	linear	projection	title	
N				.XX±.01/.X±.3	⊕	RIGHT ANGLE RECEPTACLE w/GUIDE PIN SIGNAL / POWER	
				.XXX±.005/.X±.13		product family	code
				.XXX±.0020/.XXX±.051		PWRBLADE	213
				angles		size	SHEET
				∅		51761	2 OF 3
				∅ ± .2°		scale	
				∅		1:1	
				DRDLE			
				eng			
				chr			
				appd			
sheet	revision						
index	sheet						

form no. 7530-001-I03

1 | 2

3 |

cage code 22526

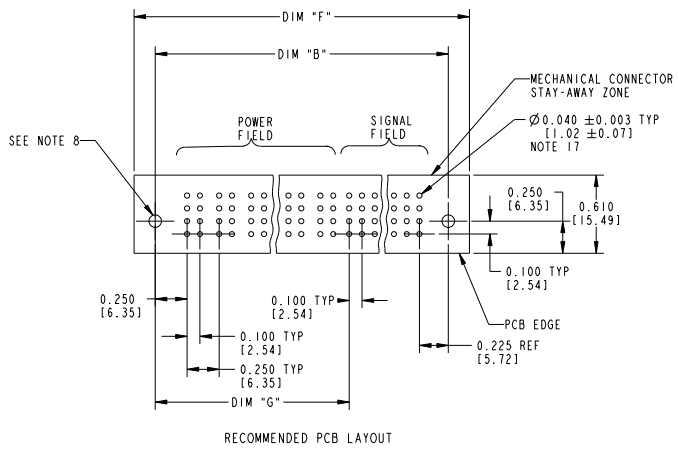
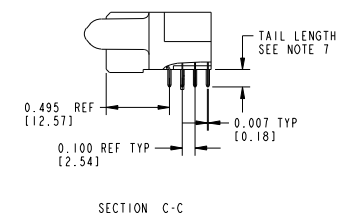
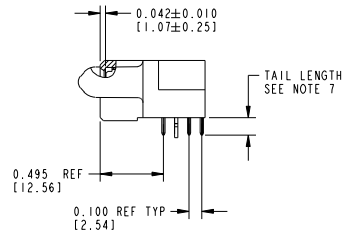
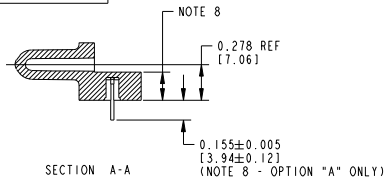
4

Tous droits strictement réservés. Reproduction ou communication à des tiers sans autorisation écrite du propriétaire. Propriété de FCJ. Droits de reproduction FCJ.



All rights strictly reserved. Reproduction or issue to third parties in any form or by any means without written authority from the proprietor. Property of FCJ. Copyright FCJ.

PRODUCT NUMBER  
51761 - A00CCDDEF \_ \_  
NOTE ①



mat'l code				tolerances unless otherwise specified		CUSTOMER		FCJ		www.fcjconnect.com	
lfr	ecm no.	dr	date	linear	.XX±.01/.X±.3	projection		COPY		title	
N				linear	.XXX±.005/.XX±.13	1		RIGHT ANGLE RECEPTACLE w/GUIDE PIN		SIGNAL / POWER	
				angles	.XXX±.0020/.XXX±.051	1		product family		PWRBLADE	
				dr	DOUBLE	05-09-00		size		code	
				eng	J. BROWN	05-09-00		scale		213	
				chr	J. BROWN	05-09-00		A		SHEET	
				appd	J. BROWN	05-09-00		1:1		3 OF 3	
sheet index	revision sheet									cage code	
										22526	

form no. 7530-001-103