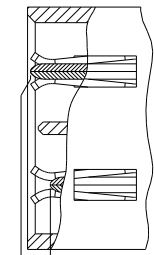
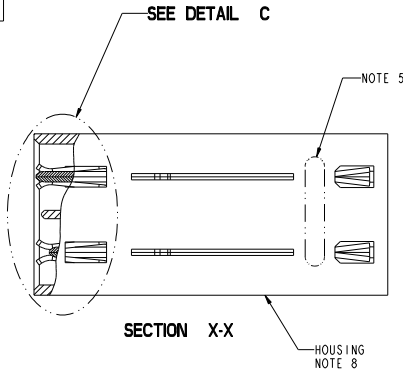


PART NUMBER	FIRST MATE (LONG) CONTACT POSN	SECOND MATE (SHORT) CONTACT POSN	TAIL TYPE
10078770-001LF	NONE	POSN 1 & 2	PRESS-FIT
10078770-002LF	POSN 1	POSN 2	
10078770-003LF	POSN 1 & 2	NONE	



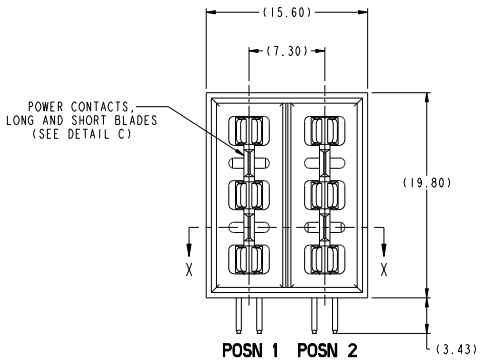
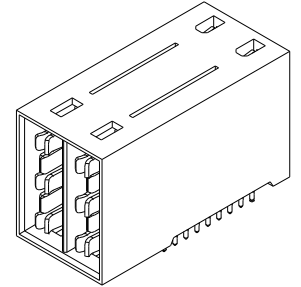
DETAIL C
SCALE 6:1
POWER MATING SEQUENCE
(SEE TABLE)

(1.27)
CONTACT SEQUENCING

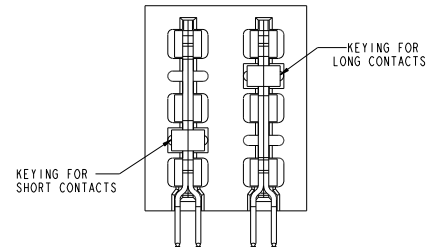
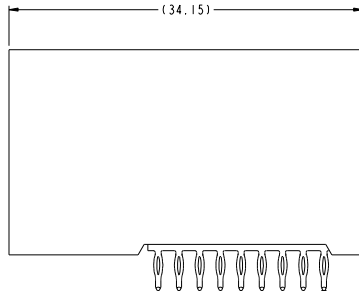


SECTION X-X

HOUSING NOTE 8



POWER CONTACTS, LONG AND SHORT BLADES (SEE DETAIL C)



10078770-002 SHOWN

Copyright FCI

www.fciconnect.com		surface	tolerance	std	projection	MM
		ASME Y14.5	ASME Y14.5	ASME Y14.5	MM	Scale 1:1
		TOLERANCES UNLESS OTHERWISE SPECIFIED				
Dr.	W. J. SWAIN	2007-06-04	ANGULAR	d. x	d. 3	1:1
Eng.	W. J. SWAIN	2007-06-04	LINEAR	d. 3x	d. 10	A2
Chr.	W. J. SWAIN	2007-06-04	d°	d. 3x	d. 50	ECN
Appr.	-	-	Product family	HCI Spec ref		-
FCI	ASSEMBLY, HEADER, R/A,		Rev. 2	10078770		C
Controlling no.	2 POSN ISOLATED POWER CONTACT		CUSTOMER	sheet 1 of 2		

PDM: Rev:C

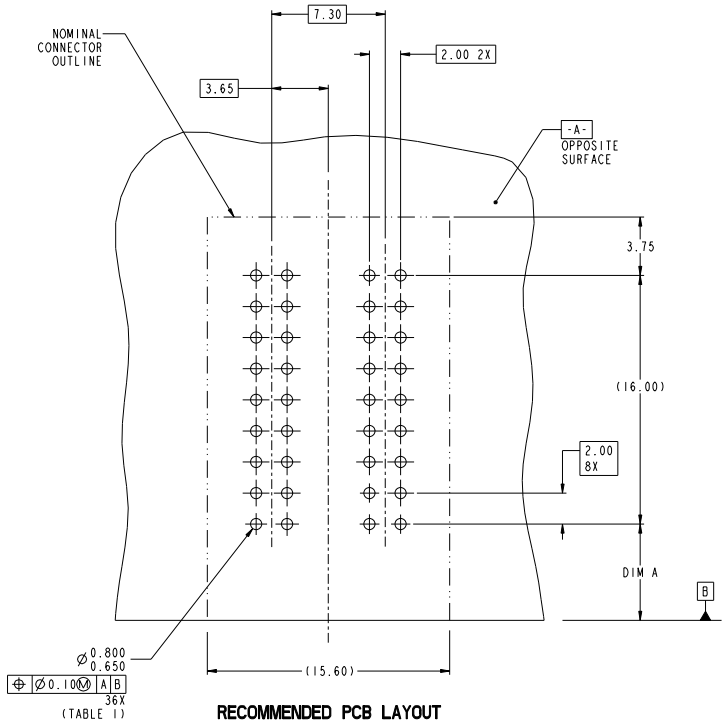
STATUS:Released

Printed: Dec 18, 2010

TOP LAYER DESCRIPTION	TABLE 1 (HCI POWER) PLATED THROUGH-HOLE REQUIREMENTS							
	DRILLED HOLE DIAMETER	COPPER THICKNESS	TIN-LEAD THICKNESS	NICKEL THICKNESS	GOLD THICKNESS	TIN THICKNESS	SILVER THICKNESS	FINISHED HOLE DIAMETER
TIN-LEAD	0.81-0.86 (0.85 DRILL)	0.025 - 0.050	0.005 - 0.015	--	--	--	--	0.65 - 0.80
IMMERSION TIN	0.81-0.86 (0.85 DRILL)	0.025 - 0.050	--	--	--	0.9 - 1.5um	--	0.70 - 0.80
IMMERSION SILVER	0.81-0.86 (0.85 DRILL)	0.025 - 0.050	--	--	--	--	0.15 - 0.65um	0.70 - 0.80
COPPER (SEE NOTE 9)	0.81-0.86 (0.85 DRILL)	0.025 - 0.050	--	--	--	--	--	0.70 - 0.80
GOLD	0.81-0.86 (0.85 DRILL)	0.025 - 0.050	--	0.003 - 0.007	FLASH UP TO 0.0002	--	--	0.69 - 0.80

NOTES:

- CONNECTOR MATERIALS:
HOUSING: HIGH TEMPERATURE THERMOPLASTIC, BLACK
UL 94V-0 COMPLIANT
CONTACTS: HIGH PERFORMANCE COPPER ALLOY
- CONTACT FINISH (Ref. GS-12-380 SECTION 5.2)
- PRODUCT SPECIFICATION: GS-12-380.
- APPLICATION SPECIFICATION: GS-20-070.
- PRODUCT MARKING (PRODUCT NUMBER & DATE CODE) ON HOUSING IN AREA SHOWN.
- MINIMUM NOMINAL PCB THICKNESS: 1.6mm
- PACKAGING MEETS FCI SPECIFICATION GS-14-1194
- HOUSING COMPONENT WILL WITHSTAND EXPOSURE TO 260°C PEAK TEMPERATURE FOR 60 SECONDS IN A CONVECTION, INFRA-RED, OR VAPOR PHASE REFLOW OVEN.
- COPPER PLATING THICKNESS IN CENTER OF VIA-HOLE CAN BE NO MORE THAN 0.003 LESS THAN OTHER AREAS.
- ALL HOLE SIZES ARE FINISHED HOLE SIZES UNLESS OTHERWISE NOTED.



RECOMMENDED PCB LAYOUT
COMPONENT SIDE
NOTE 6

DIM A	DISTANCE FROM BOARD TO BOARD AT FULLY MATED POSITION (NOMINAL)	PRODUCT LINE APPLICATION
8.70 mm	10.0 mm	Metral High Speed
6.20 mm	12.5 mm (H.M.)	Airmax VS,Zipline
2.20 mm	16.5 mm	XCede

FCI	ASSEMBLY, HEADER, R/A,	REV. C	10078770
	2-POSN ISOLATED POWER CONTACT	CUSTOMER	sheet 2 of 2

Copyright FCI