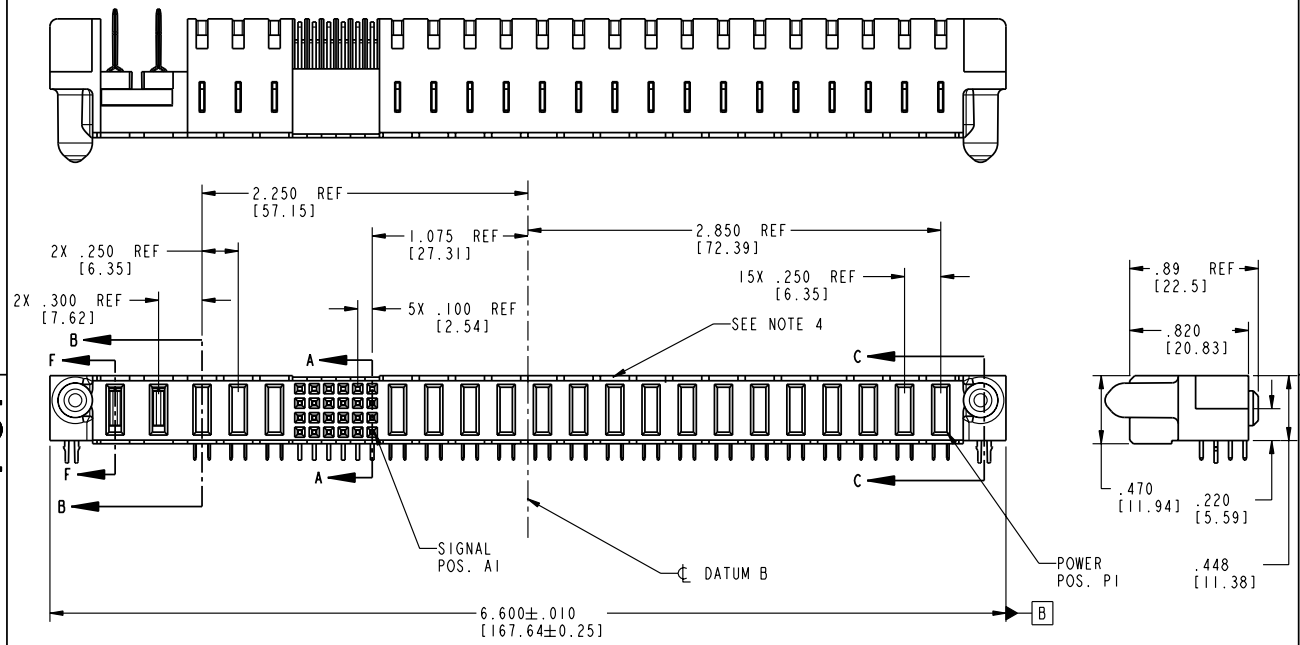


Tous droits strictement réservés. Reproduction ou communication à des tiers interdite sans autorisation formelle écrite du propriétaire. Propriété de c FCI. Droits de reproduction FCI.

All rights strictly reserved. Reproduction or issue to third parties in any form or by any means is not permitted without written authority from the proprietor. Property of FCI. Copyright FCI.

PRODUCT NO.	ROWS	POWER					SIGNAL					POWER																		
51894-004	A D C A	E2	P21	P20	P19	P18	P17	6	5	4	3	2	1	P16	P15	P14	P13	P12	P11	P10	P9	P8	P7	P6	P5	P4	P3	P2	P1	E1
		PH	PH	PC	PC	PA	H	H	H	H	H	H	G	G	G	G	G	G	G	G	G	G	G	G	G	G	G	G	G	
							E	E	E	E	E	E	F	F	F	F	F	F	F	F	F	F	F	F	F	F	F	F	F	



CODE	DIM "M" MATING LENGTH	CONTACT TYPE
PC	.092 [2.34]	POWER
PH	.092 [2.34]	POWER
H	N/A [N/A]	SIGNAL
G	N/A [N/A]	SIGNAL
F	N/A [N/A]	SIGNAL
E	N/A [N/A]	SIGNAL
HA	N/A [N/A]	HOLD-DOWN
PA	.042 [1.07]	POWER

mat'l code		SEE NOTE 2		tolerances unless otherwise specified		CUSTOMER		 www.fciconnect.com	
lfr	ecn no.	dr	date	linear	XXX±.01/0.XX±0.3	COPY		title	
A	V03-0811	MEM	7/21/03	angles	XXX±.005/0.XX±0.13	projection		16P + 24S + 2P + 3ACP	
				dr	W. MOSTOLLER 7/21/03	INCH/MM		R/A SLDR RCPT CABLE PORT	
				engr	H. BREWBAKER 7/21/03	scale		product family	
				appd	W. MOSTOLLER 7/21/03	1:1		PwrBlade	
				sheet index	revision sheet			size	
				1	2			dwg no	
				2	3			A 51894-004	
				3	4			code	
				4				213	
								sheet	
								1 of 4	
								cage code	
								22526	

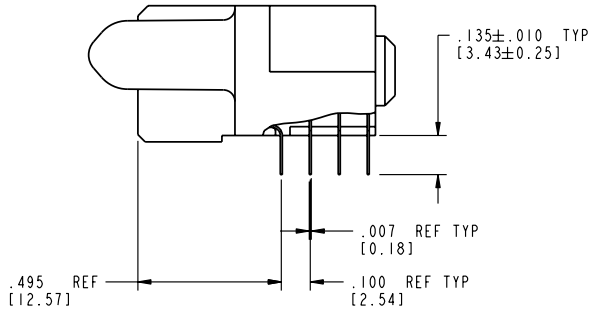
Pro/E 3 cage code 22526 4

PDM: Rev:A STATUS:Released Printed: Dec 20, 2010

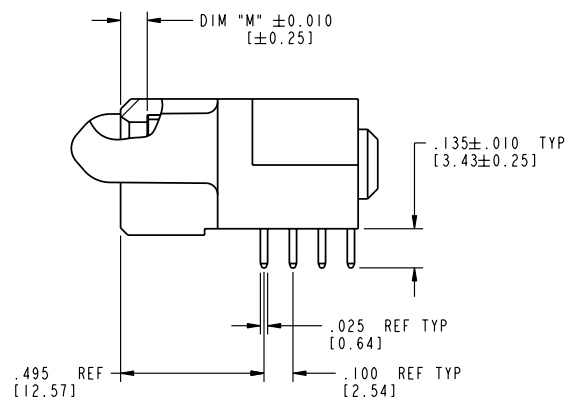
Tous droits strictement réservés. Reproduction ou communication à des tiers interdite sans autorisation formelle écrite du propriétaire. Propriété de FCI. Droits de reproduction FCI.

All rights strictly reserved. Reproduction or issue to third parties in any form or by any means is not permitted without written authority from the proprietor. Property of FCI. Copyright FCI.

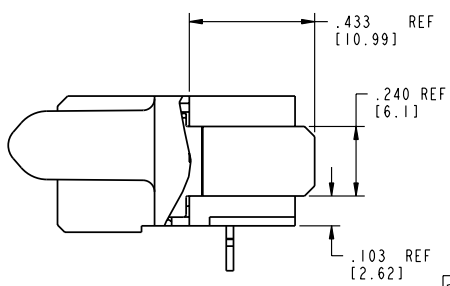
PRODUCT NUMBER
51894-004



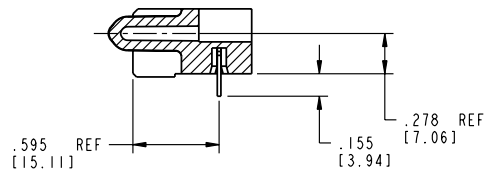
BROKEN-OUT SECTION A-A
SCALE 2:1



BROKEN-OUT SECTION B-B
SCALE 2:1



SECTION F-F
SCALE 2:1



SECTION C-C

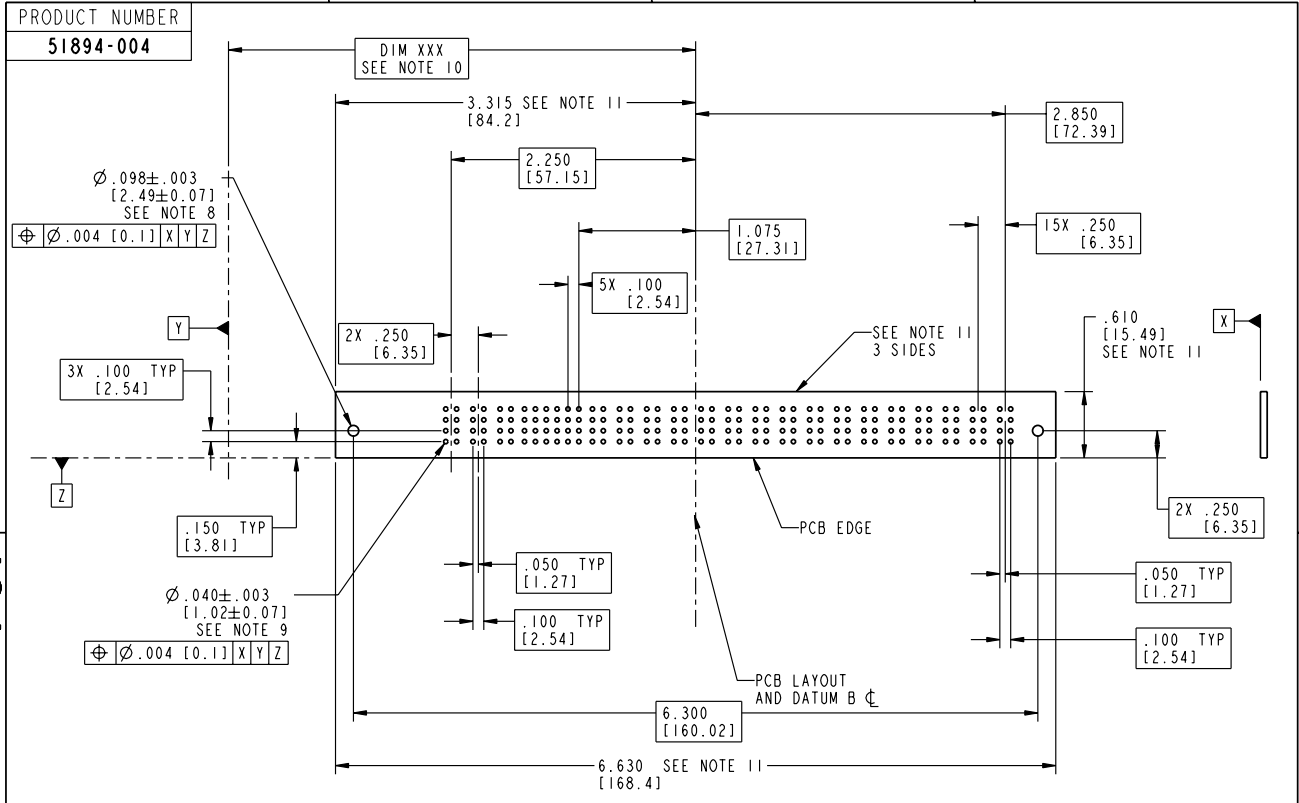
mat'l code SEE NOTE 2				tolerances unless otherwise specified		CUSTOMER		 www.fciconnect.com	
lfr	ecn no.	dr	date	linear	XXX±.01/0.XX±0.3	COPY		title 16P + 24S + 2P + 3ACP	
A				angles	XXX±.002/0.XXX±0.051	projection		R/A SLDR RCPT CABLE PORT	
				dr	0° ± 2°	 INCH/MM		product family PwrBlade	
				enrg	M. MOSTOLLER 7/21/03	scale		size dwg no	
				chr	H. BREWBAKER 7/21/03	1:1		A 51894-004	
				appd	M. MOSTOLLER 7/21/03			code 213	
sheet index	revision sheet							sheet 2 of 4	

Pro/E 3 cage code 22526 4

PDM: Rev:A STATUS: Released Printed: Dec 20, 2010

Tous droits strictement réservés. Reproduction ou communication à des tiers interdite sans autorisation formelle écrite du propriétaire. Propriété de c FCI. Droits de reproduction FCI.

All rights strictly reserved. Reproduction or issue to third parties in any form or by any means is not permitted without written authority from the proprietor. Property of FCI. Copyright FCI.



mat'l code		SEE NOTE 2	tolerances unless otherwise specified	CUSTOMER	FCI		www.fciconnect.com
lfr	ecn no.	dr	date	COPY	title		16P + 24S + 2P + 3ACP
A				projection	R/A SLDR RCPT CABLE PORT		
				linear	product family		PwrBlade
				angles	size		213
				dr	scale		3 of 4
				enr	A		51894-004
				chr	3:4		
				appd			
sheet index	revision sheet						

Pro/E 3 cage code 22526 4

PDM: Rev:A STATUS: Released Printed: Dec 20, 2010

Tous droits strictement réservés. Reproduction ou communication à des tiers interdite sans autorisation formelle que soit sous quelconque forme écrite ou électronique. Propriété de c FCI. - Droits de reproduction FCI.

All rights strictly reserved. Reproduction or issue to third parties in any form or by any means is not permitted without written authority from the proprietor. Property of FCI. Copyright FCI.


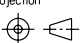
PRODUCT NUMBER
51894-004

NOTES:

1. DIMENSIONS AND TOLERANCES ARE IN ACCORDANCE WITH ASME Y14.5M, 1994 UNLESS OTHERWISE SPECIFIED.

CONNECTOR NOTES:

- 2. HOUSING MATERIAL: UL 94 V-0 GLASS FILLED
HIGH-TEMP THERMOPLASTIC
POWER CONTACT MATERIAL: COPPER ALLOY
SIGNAL PIN MATERIAL: COPPER ALLOY
 - 3. PLATING:
SIGNAL PINS: 30u"/0.76um Au OVER 50u"/1.27um Ni
POWER CONTACTS: 50u"/1.27um Ni UNDER ALL
WITH 30u"/0.76um Au ON CONTACT AREA
AND SnPb ON PCB INTERFACE
 - 4. MANUFACTURER'S NAME, P/N, AND DATE CODE TO APPEAR ON THIS SURFACE.
 - 5. PRODUCT SPECIFICATION GS-12-149.
APPLICATION SPECIFICATION BUS-20-067.
 - 6. PACKAGED IN TRAYS.
- PCB NOTES:
- 7. ALL HOLE DIAMETERS ARE FINISHED HOLE SIZE.
 - 8. MOUNTING HOLES, WHERE APPLICABLE, ARE UNPLATED.
 - 9. $\varnothing .0453 \pm .0010$ [1.151 \pm 0.025] DRILLED HOLES PLATED WITH .0003 [0.008] MIN SnPb OVER .001 [0.03] TO .003 [0.08] Cu PLATING TO ACHIEVE $\varnothing .040 \pm .003$ [1.02 \pm .07] HOLE.
 - 10. "DIM XXX" TO BE DETERMINED BY THE CUSTOMER.
 - 11. CONNECTOR KEEP-OUT ZONE.

mat'l code				SEE NOTE 2	tolerances unless otherwise specified	CUSTOMER	 www.fciconnect.com	
lfr	ecm no.	dr	date	linear	$.XX \pm .01 / 0.X \pm 0.3$ $.XXX \pm .005 / 0.XX \pm 0.13$ $.XXXX \pm .0020 / 0.XXX \pm 0.051$	COPY	 title 16P + 24S + 2P + 3ACP R/A SLDR RCPT CABLE PORT	
A				angles	$0^\circ \pm 2^\circ$	INCH/MM	product family	code
				dr	M. MOSTOLLER 7/21/03	scale	PwrBlade	213
				engr	M. MOSTOLLER 7/21/03	1:1	size	sheet
				chr	H. BREWBAKER 7/21/03		dwg no	4 of 4
				appd	M. MOSTOLLER 7/21/03		A	
sheet index	revision sheet						51894-004	

Pro/E 3 cage code 22526 4