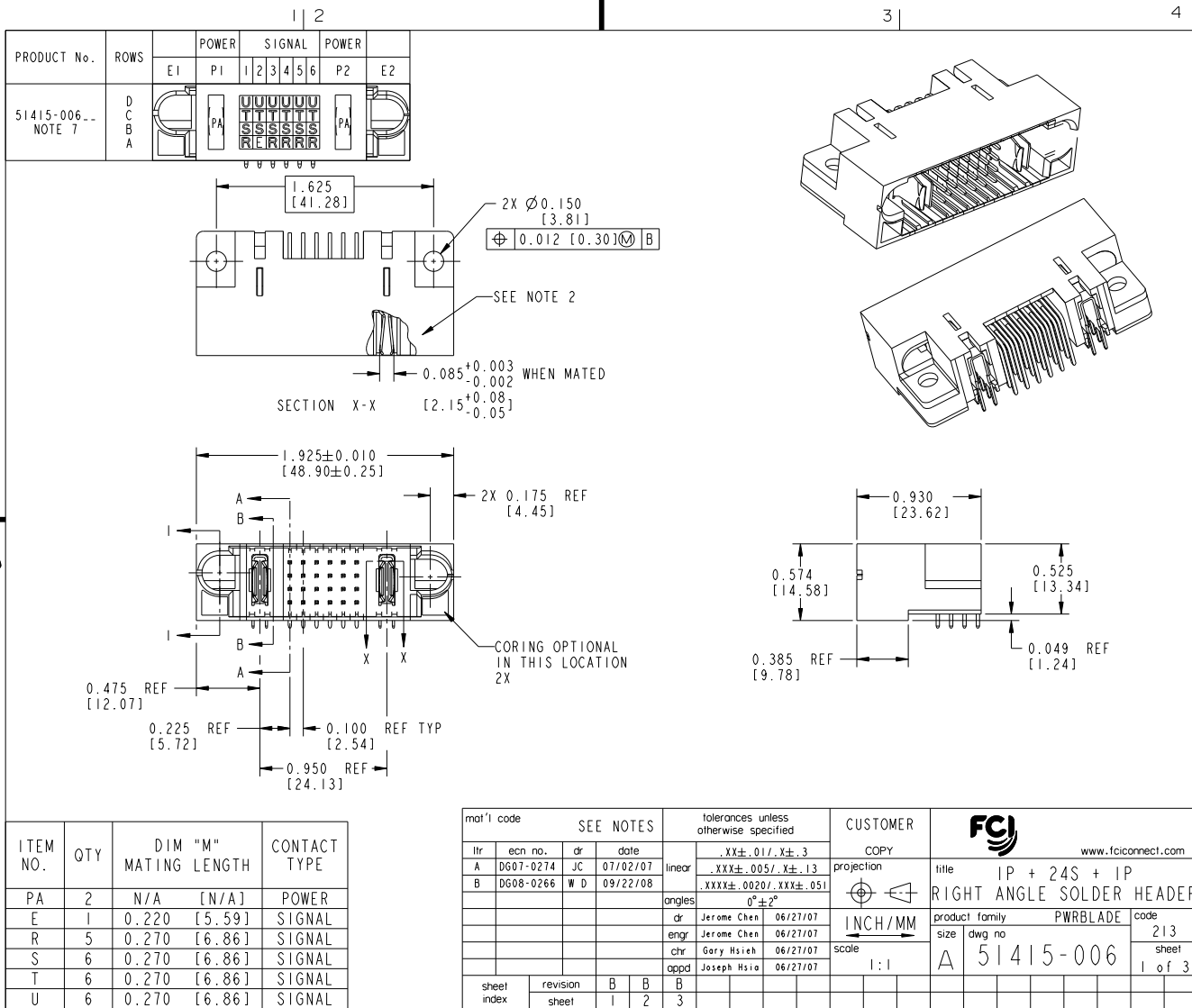


Tous droits strictement réservés. Reproduction ou communication à des tiers interdite sans autorisation écrite du propriétaire. Propriété de c FCI. Droits de reproduction FCI.



All rights strictly reserved. Reproduction or issue to third parties in any form whatever is not permitted without written authority from the proprietor. Property of FCI. Copyright FCI.



ITEM NO.	QTY	DIM "M"	MATING LENGTH	CONTACT TYPE
PA	2	N/A	[N/A]	POWER
E	1	0.220	[5.59]	SIGNAL
R	5	0.270	[6.86]	SIGNAL
S	6	0.270	[6.86]	SIGNAL
T	6	0.270	[6.86]	SIGNAL
U	6	0.270	[6.86]	SIGNAL

mat'l code		SEE NOTES		tolerances unless otherwise specified		CUSTOMER	
lfr	ecn no.	dr	date	linear	.XX±.01 / X±.3	COPY	www.fciconnect.com
A	D607-0274	JC	07/02/07		.XXX±.005 / X±.13	projection	title IP + 24S + IP
B	D608-0266	W D	09/22/08		.XXX±.0020 / XXX±.051	INCH/MM	RIGHT ANGLE SOLDER HEADER
				angles	0°±2°	scale	product family PWRBLADE
				dr	Jerome Chen 06/27/07	size	code 213
				engr	Jerome Chen 06/27/07	dwg no	sheet 1 of 3
				chr	Gary Hsieh 06/27/07	code	51415-006
				appd	Joseph Hsia 06/27/07		
sheet index	revision sheet	B	B	B			
		1	2	3			

Pro/E

PDM: Rev:B

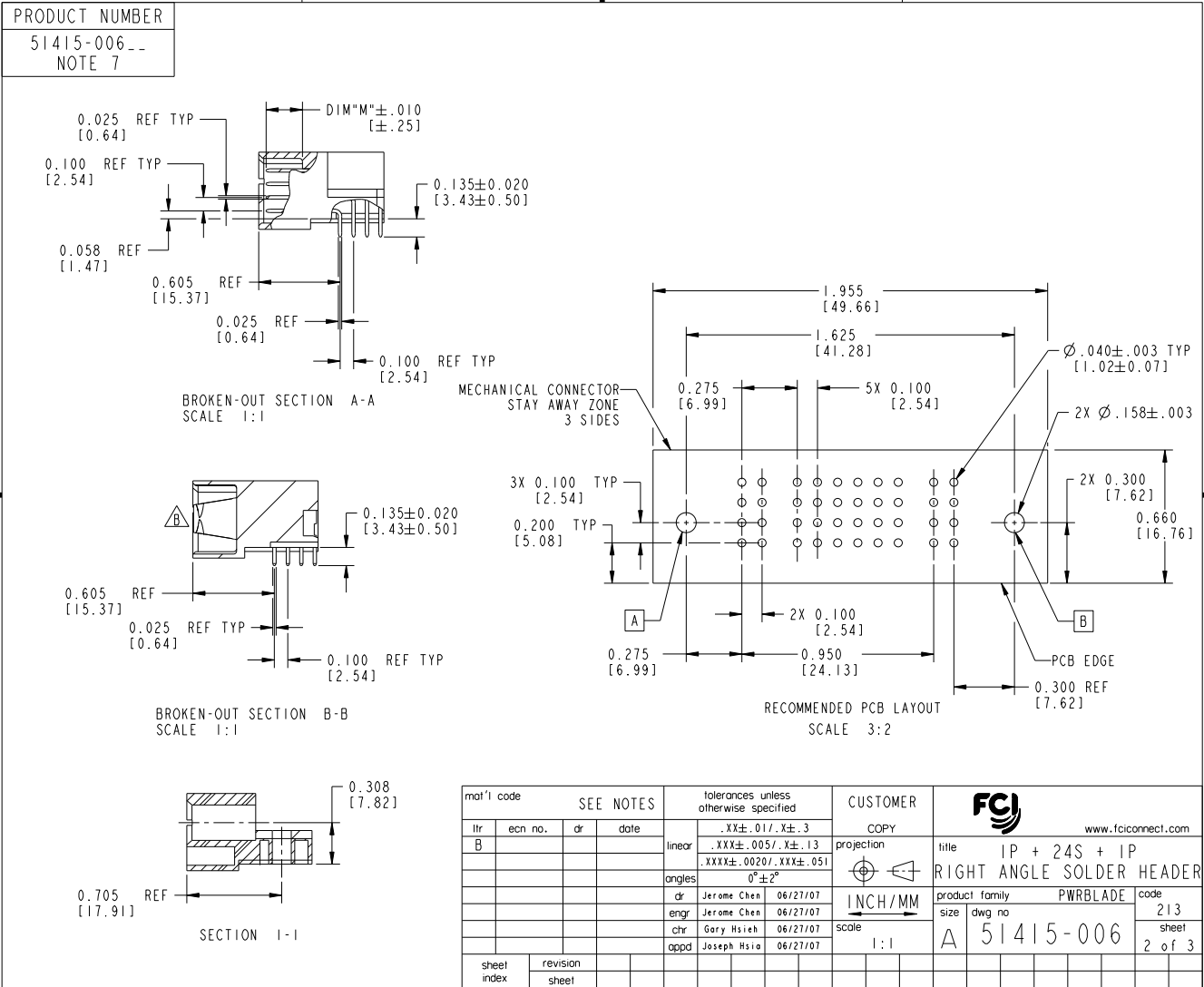
STATUS: Released

Printed: Dec 20, 2010

Tous droits strictement réservés. Reproduction ou communication à des tiers interdite sans quelque forme que ce soit sans autorisation écrite du propriétaire. Propriété de c FCI. Droits de reproduction FCI.



All rights strictly reserved. Reproduction or issue to third parties in any form whatever is not permitted without written authority from the proprietor. Property of FCI. Copyright FCI.



mat'l code		SEE NOTES		tolerances unless otherwise specified		CUSTOMER		FCI www.fciconnect.com	
ltr	ecr no.	dr	date	linear	.XX±.01/.X±.3	projection	COPY	title	IP + 24S + IP
B				linear	.XXX±.005/.X±.13	INCH/MM		RIGHT ANGLE SOLDER HEADER	
				angles	.XXX±.0020/.XXX±.051	scale		product family	PWRBLADE
				dr	Jerome Chen 06/27/07	1:1		size	213
				engr	Jerome Chen 06/27/07			dwg no	2 of 3
				chr	Gary Hsieh 06/27/07				
				appd	Joseph Hsia 06/27/07				
sheet index	revision sheet								

Tous droits strictement réservés. Reproduction ou communication à des tiers interdite sans autorisation écrite du propriétaire. Property of FCI. Droits de reproduction FCI.



All rights strictly reserved. Reproduction or issue to third parties in any form whatever is not permitted without written authority from the proprietor. Property of FCI. Copyright FCI.

PRODUCT NUMBER
51415-006--
NOTE 7

CONNECTORS - NOTES:

1. HOUSING MATERIAL: GLASS FILLED HIGH TEMP THERMO PLASTIC
SIGNAL PIN MATERIAL: PHOS. BRONZE
POWER CONTACT MATERIAL: COPPER ALLOY
2. "MANUFACTUROR" NAME, P/N, AND DATE CODE TO APPEAR ON THIS SURFACE
3. MATING CONNECTOR 51416
4. INSTALLATION TOOLING P/N N/A
5. SUPERSEEDS (N/A)
6. PRODUCT SPECIFICATION GS-12-149
7. SEE ITEM 1 & 2 IN PRINT 10064183 FOR PLATING SPEC OF 51415-006 AND 51415-006LF RESPECTIVELY.

PCB - NOTES

8. ALL DIMENSIONS ON PCB LAYOUT ARE BASIC UNLESS OTHERWISE SPECIFIED.
9. ALL THROUGH HOLES ARE LOCATED WITH A TRUE POSITION OF .004[0.10] TO DATUM A, B
10. ALL HOLE DIAMETERS ARE FINISHED HOLE SIZE
11. Ø.158 THROUGH HOLES ARE UNPLATED
12. Ø.0453 ± 0.0010 [1.51 ± 0.25] DRILLED HOLES PLATED WITH 0.0003 [0.007] MIN SnPb OR Sn OVER 0.001 [0.03] TO 0.003 [0.08] Cu PLATING TO ACHIEVE A Ø.040 ± 0.003 [1.02 ± 0.08] HOLE
13. A/B SYMBOL WILL BE NEXT TO ANY DIMENSION, VIEW, OR NOTE WHICH HAS BEEN MODIFIED WITH THE CURRENT DRAWING REVISION.

mat'l code				SEE NOTE# NOTES		tolerances unless otherwise specified		CUSTOMER		FCI www.fciconnect.com				
ltr	ecn no.	dr	date	linear	.XX±.01/.X±.3	projection	COPY	title IP + 24S + IP						
B					.XXX±.005/.X±.13		INCH/MM	RIGHT ANGLE SOLDER HEADER						
				angles	.XXX±.0020/.XXX±.051			product family	PWRBLADE	code	213			
				dr	Jerome Chen 06/27/07		scale 1:1	size	dwg no	A	51415-006	sheet	3 of 3	
				engr	Jerome Chen 06/27/07									
				chr	Gary Hsieh 06/27/07									
				appd	Joseph Hsia 06/27/07									
sheet index	revision sheet													

1 | 2

Pro/E

PDM: Rev: B

STATUS: Released

Printed: Dec 20, 2010