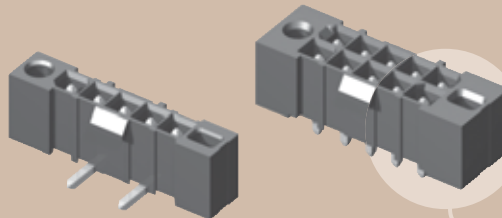
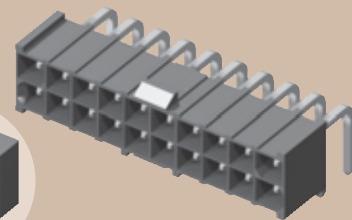




IPBT-105-H1-T-D-GP



IPBT-105-H1-T-S-RA-GP



IPBT-110-H1-T-D-RA

POWER MATE™ HEADER IPBT SERIES

SPECIFICATIONS

For complete specifications see www.samtec.com?IPBT

Insulator Material:
Black Liquid Crystal Polymer



Contact Material:
High Copper Alloy



Plating:
Sn over 50µ" (1,27µm) Ni
Operating Temp Range:
-40°C to +105°C

RoHS Compliant:
Yes

Processing:

Max Processing Temp:
230°C for 60 seconds, or
260°C for 20 seconds 3x
Lead-Free Solderable:
Yes

Mates with:
IPBS, IPBD, PMSD,
PMSS, SCR1

Latching mechanism for mating with IPBD Series

Individually shrouded pins

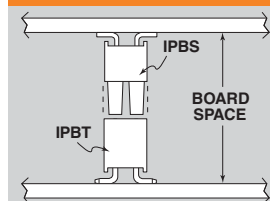
Optional polarized guide post holes

CURRENT RATING	
AMBIENT TEMP	IPBT/IPBS
20°C	11.3A
40°C	10A
60°C	8A
75°C	6.7A
6 POSITIONS (2x3) POWERED	

(4,19mm)
.165"
pitch



APPLICATION



IPBT/IPBS LEAD STYLE	BOARD SPACE
-H1	(15,25) .600
-H3	(17,00) .670
-H4	(19,00) .748
-H5	(20,00) .789
-H6	(25,00) .984

IPBT - 1 NO. OF POSITIONS PER ROW - LEAD STYLE - PLATING OPTION - ROW OPTION - OPTION

02, 03, 04, 05, 08, 10, 15
(-D only)

02, 03, 04, 05
(-S only)
(Call Samtec for other sizes)

-H1
= Through-Hole

-H2
= Surface Mount

-HX
= Elevated Through-Hole
(Specify "XX" from chart
-D only)

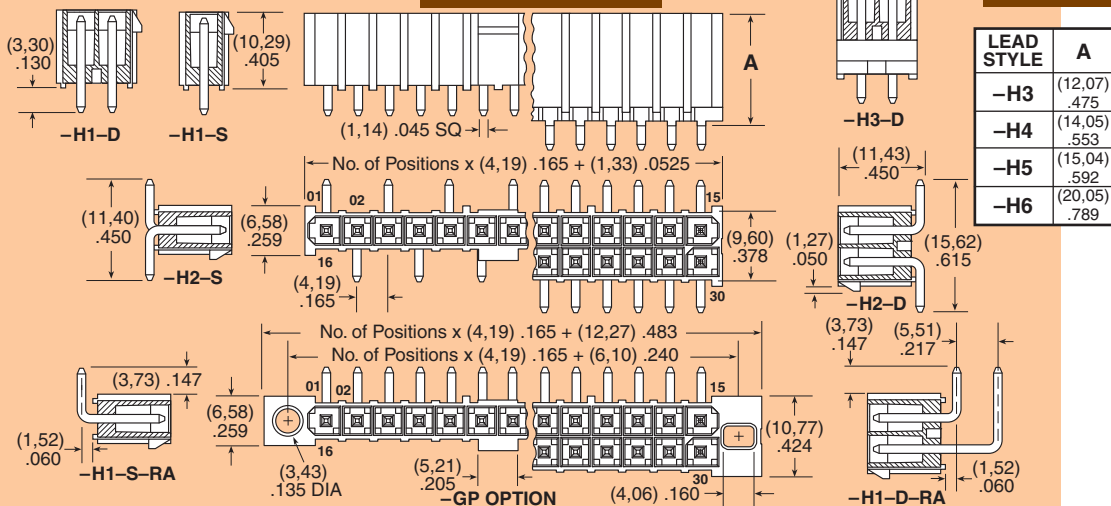
-T
= Matte Tin

-S
= Single Row

-D
= Double Row

-RA
= Right Angle
(Lead Style
-H1 only)

-GP
= Guide Post Holes
(8 positions not available)



Note: Some lengths, styles and options are non-standard, non-returnable.

Due to technical progress, all designs, specifications and components are subject to change without notice.

WWW.SAMTEC.COM

SAMTEC USA • Tel: 1-800-SAMTEC-9 or 812-944-6733 • Fax: 812-948-5047

SAMTEC GERMANY • Tel: +49 (0) 89 / 89460-0 • Fax: +49 (0) 89 / 89460-299

SAMTEC NORDIC/BALTIC • Tel: +46-84477280 • Fax: +46-87420413

SAMTEC ASIA PACIFIC • Tel: 65 6745-5955 • Fax: 65 6841-1502

SAMTEC HONG KONG • Tel: 852-2800-4850 • Fax: 852-2800-4841

SAMTEC SILICON VALLEY • Tel: 408-395-5900 • Fax: 408-395-1520

SAMTEC FRANCE • Tel: 33 01 60 95 06 60 • Fax: 33 01 60 95 06 61

SAMTEC ISRAEL • Tel: 972-3-7526600 • Fax: 972-3-7526690

SAMTEC CHINA • Tel: 86-21-61103766 • Fax: 86-21-5423 4575

SAMTEC SOUTH AFRICA • Tel: 27 11 452 8112 • Fax: 27 86 6714432

SAMTEC UK • Tel: 44 01236 739292 • Fax: 44 01236 727113

SAMTEC ITALY • Tel: 39 039 6890337 • Fax: 39 039 6890315

SAMTEC INDIA • Tel: +91-80-3272 1612 • Fax: +91-80-4152 8187

SAMTEC TAIWAN • Tel: 886-2-2735-6109 • Fax: 886-2-2735-5036

SAMTEC ANZ • Tel: 613 9512 7747 • Fax: 613 9512 7745