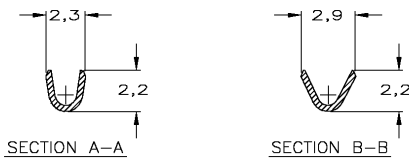
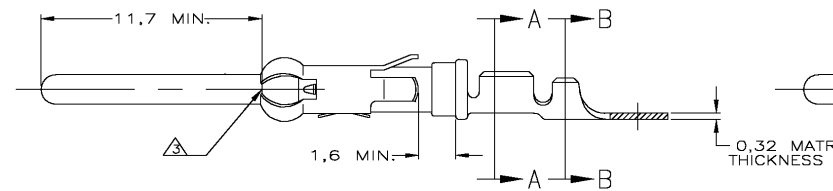
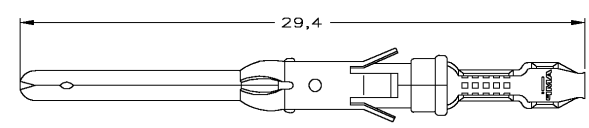
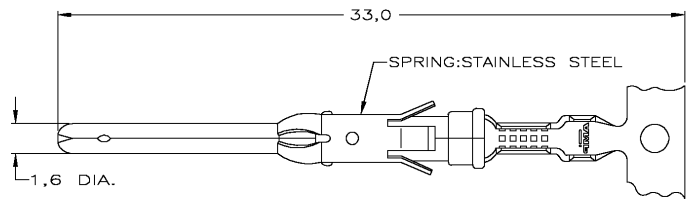


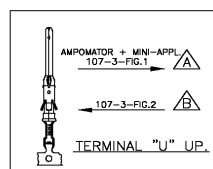
THIS DRAWING IS UNPUBLISHED. RELEASED FOR PUBLICATION JAN. 1991.
 © COPYRIGHT 1991 BY TYCO ELECTRONICS CORPORATION. ALL RIGHTS RESERVED.

LOC	DIST	REVISIONS			
P	LTR	DESCRIPTION	DATE	DWN	APVD
G		EBDD-0462-04	08DEC04	RS	MG



WIRE RANGE : 0,20-0,50 mm² (24-20 AWG)
 INSUL. RANGE : 1,1 -1,8 mm (.045-.070)

- NOTES :
- FOR CRIMPDETAILS SEE AMP-SPEC. 114-19.000 .
 - MEETS PRODUCTSPECIFICATION 108-10042.
- ▲ 0,40 MAX. GAP BETWEEN SPRING-NOSE AND CONTACT BODY.



PARTNUMBER	DIRECTION OF RED.	LOOSE-PIECE	MATERIAL	PLATING
164160-8	▲	164163-8	PHBR	EL.TIN
164160-7	▲		BRASS	ECON.GOLD
164160-6	▲	164163-4	BRASS	ECON.GOLD
164160-4	▲		BRASS	SEL.GOLD
164160-3	▲		BRASS	EL.TIN
164160-2	▲	164163-2	BRASS	SEL.GOLD
164160-1	▲	164163-1	BRASS	EL.TIN

NOTES	MATERIAL	THICKNESS	AREA
▲	TIN	2,0 μm	ALL OVER
▲	NICKEL	0,8 μm	ALL OVER
▲	GOLD	0,8 μm	CONTACT AREA
▲	TIN	0,8 μm	BARREL
▲	NICKEL	0,8 μm	ALL OVER
▲	GOLD	0,8 μm	CONTACT AREA
▲	NICKEL	1,2 μm	ALL OVER
▲	GOLD	1,2 μm	CONTACT AREA
▲	NICKEL	2,5 μm	ALL OVER
▲	SILVER	0,5 μm	CONTACT AREA
▲	TIN	2,5 μm	BARREL
▲	SILVER	0,5 μm	ALL OVER
▲	SILVER	2,5 μm	ALL OVER

THIS DRAWING IS A CONTROLLED DOCUMENT.

DIMENSIONS: mm

TOLERANCES UNLESS OTHERWISE SPECIFIED:

0 PLC	± -
1 PLC	± -
2 PLC	± -
3 PLC	± -
4 PLC	± -
ANGLES	± -

MATERIAL: - FINISH: -

19.08.1987

DWN: L.V.D. HEYDEN
 CHK: P.V.D. HAGEN
 APVD: -

PRODUCT SPEC: -
 APPLICATION SPEC: -
 WEIGHT: -

Tyco Electronics Tyco Electronics Corporation
 Bideford, UK, EX39 4HE

NAME: PIN TYPE III CONTACT
 SIZE 16 (LONG PIN)

SIZE: A3 CAGE CODE: 00779 DRAWING NO: 164160 RESTRICTED TO: -

CUSTOMER DRAWING SCALE: - SHEET 1 OF 1 REV G