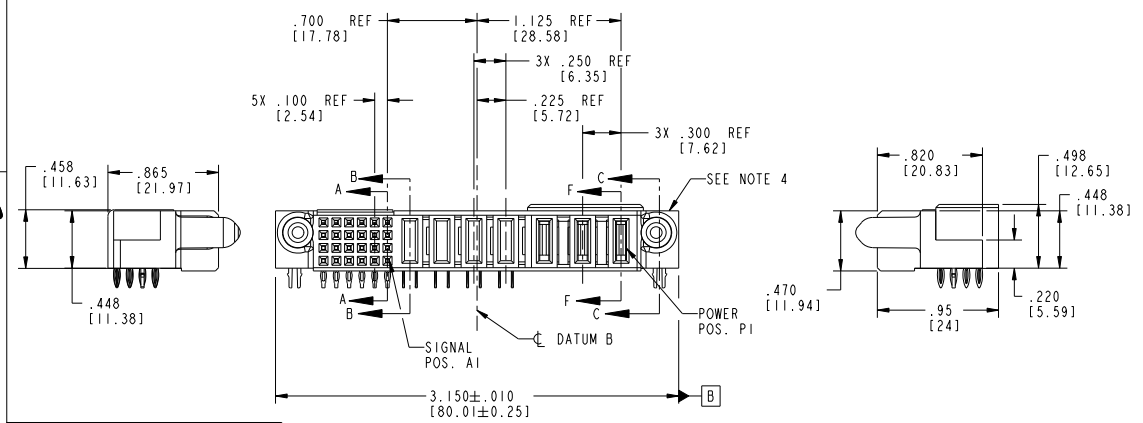
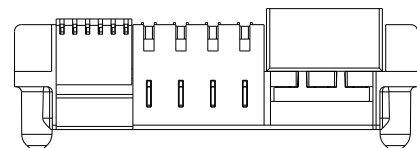


Tous droits strictement réservés. Reproduction ou communication à des tiers interdite sans la permission écrite du propriétaire. Property of FCJ. Droit de reproduction FCJ.



All rights strictly reserved. Reproduction or issue to third parties in any form or by any means without written authority from the proprietor. Property of FCJ. Copyright FCJ.

PRODUCT NO.	ROWS	SIGNAL					POWER					E1		
		E2	S	S	S	S	P7	P6	P5	P4	P3		P2	P1
51923-003	D C B A	S	S	S	S	S	P	P	P	P	P	P	P	
NOTE: 3		N	N	N	N	N								



CODE	DIM "M"	MATING LENGTH	CONTACT TYPE
N	N/A	[N/A]	SIGNAL
P	N/A	[N/A]	SIGNAL
R	N/A	[N/A]	SIGNAL
S	N/A	[N/A]	SIGNAL
PF	.092	[2.34]	POWER
PG	.042	[1.07]	POWER
PH	.092	[2.34]	POWER
HA	N/A	[N/A]	HOLD-DOWN

tolerances unless otherwise specified	CUSTOMER	FCJ	www.fcjconnect.com
linear .XX±.01/0.X±0.3	COPY		
angles .XXX±.005/0.XX±0.13	projection	INCH/MM	scale
or .XXX±.002/0.XX±0.051	INCH/MM	1:1	product family
eng. I. BRUNARD 10/06/04	scale		size
chr. M. GRAY 10/06/04			dwg no
appd. M. GRAY 10/06/04			code
sheet index	revision sheet	C C C C	1 2 3 4

title	3ACP + 4P + 24S	code	213
R/A PF RCPT CABLE PORT		sheet	1 of 4
PwrBlade			
code	51923-003		

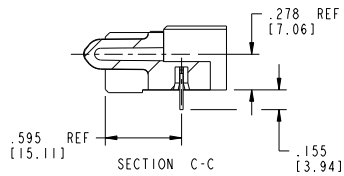
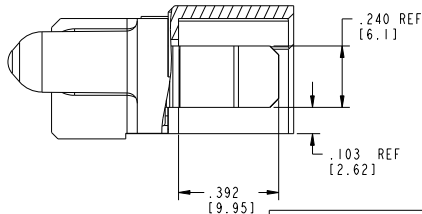
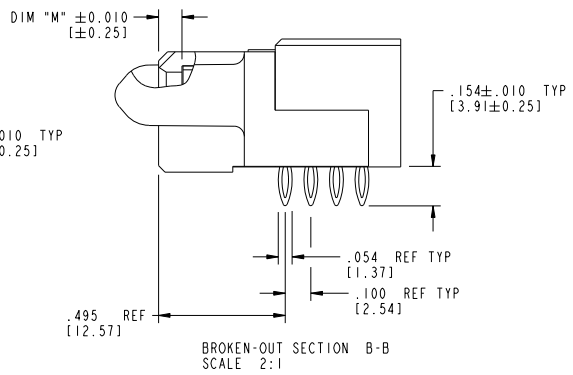
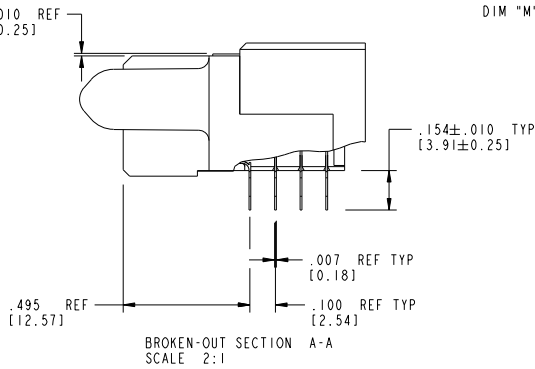
1 | 2 Pro/E 3 | 4 cage code 22526

Tous droits strictement réservés. Reproduction ou communication à des tiers interdite sans autorisation écrite du propriétaire. Property of FCJ. Droit de reproduction FCJ.



All rights strictly reserved. Reproduction or issue to third parties in any form or by any means without written authority from the proprietor. Property of FCJ. Copyright FCJ.

PRODUCT NUMBER  
51923-003--  
NOTE: 3



mat'l code	SEE NOTE 2			tolerances unless otherwise specified	CUSTOMER	www.fcjconnect.com
itr	ecm no.	dr	date	linear XX±.01/0.X±0.3 XXX±.005/0.XX±0.13 angles X°±Y'	projection 	
C				dr I. BRUNGARD 10/06/04	INCH/MM	product family PwrBlade
				eng M. GRAY 10/06/04	scale 1:1	code 213
				chr M. GRAY 10/06/04		size A
				appd M. GRAY 10/06/04		dwg no 51923-003
sheet index	revision sheet					sheet 2 of 4

Pro/E

cage code 22526

PDM: Rev:C

STATUS:Released

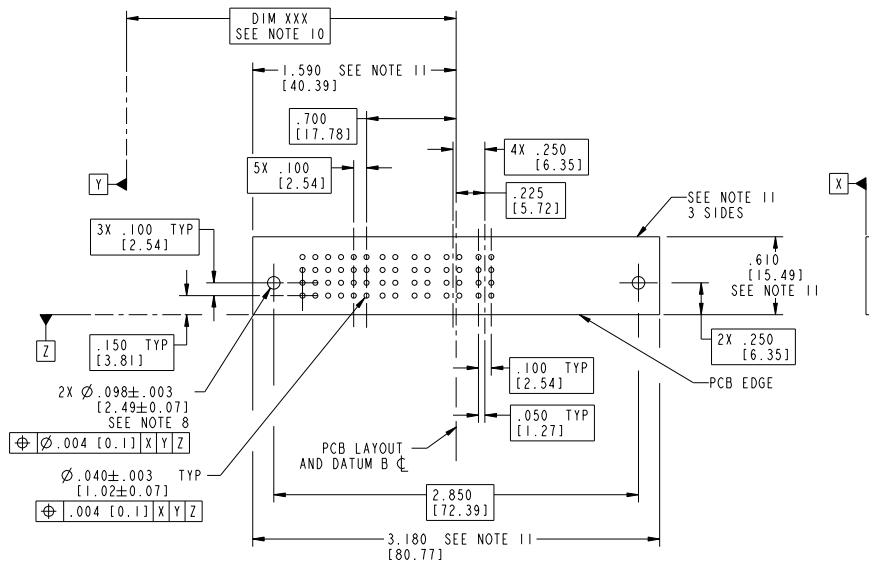
Printed: Dec 20, 2010

Tous droits strictement réservés. Reproduction ou communication à des tiers interdite sans la permission écrite du propriétaire. Property of FCJ. Droits de reproduction FCJ.



All rights strictly reserved. Reproduction or issue to third parties in any form or by any means without written authority from the proprietor. Property of FCJ. Copyright FCJ.

PRODUCT NUMBER  
51923-003--  
NOTE: 3



mat'l code		SEE NOTE 2		tolerances unless otherwise specified		CUSTOMER		FCJ		www.fcjconnect.com	
itr	ecm no.	dr	date	linear	.XX±.01/0.X±0.3	projection	COPY	title			
C				angles	.XXX±.005/0.XX±0.13			3ACP + 4P + 24S			
				or	.XXX±.002/0.XX±0.051		INCH/MM		R/A PF RCPT CABLE PORT		
				eng	T. BRUNGARD 10/06/04	scale		product family	PwrBlade	code	213
				chr	M. GRAY 10/06/04	1:1	A	size	dwg no	51923-003	sheet
				appd	M. GRAY 10/06/04						3 of 4
sheet index	revision sheet										

Pro/E

cage code 22526

PDM: Rev:C

STATUS:Released

Printed: Dec 20, 2010

Tous droits strictement réservés. Reproduction ou communication o des tiers interdite sans autorisation écrite du propriétaire. Property of FCI. Droit de reproduction FCI.



All rights strictly reserved. Reproduction or issue to third parties in any form or by any means without written authority from the proprietor. Property of FCI. Copyright FCI.

PRODUCT NUMBER  
51923-003\_\_  
NOTE: 3

NOTES:

1. DIMENSIONS AND TOLERANCES ARE IN ACCORDANCE WITH ASME Y14.5M, 1994 UNLESS OTHERWISE SPECIFIED.

CONNECTOR NOTES:

2. HOUSING MATERIAL: UL 94 V-0 GLASS FILLED HIGH-TEMP THERMOPLASTIC  
POWER CONTACT MATERIAL: COPPER ALLOY  
SIGNAL PIN MATERIAL: COPPER ALLOY

3. SEE ITEM 5 & 5 IN PRINT 10064183 FOR PLATING SPEC OF 51923-003 AND 51923-003LF RESPECTIVELY.

4. MANUFACTURER'S NAME, P/N, AND DATE CODE TO APPEAR ON THIS SURFACE.

5. PRODUCT SPECIFICATION GS-12-149.  
APPLICATION SPECIFICATION BUS-20-067.

6. PACKAGED IN TRAYS.

PCB NOTES:

7. ALL HOLE DIAMETERS ARE FINISHED HOLE SIZE.

8. MOUNTING HOLES, WHERE APPLICABLE, ARE UNPLATED.

9.  $\varnothing .0453 \pm .0010$  [1.151  $\pm$  0.025] DRILLED HOLES PLATED WITH .0003 [0.008] MIN SnPb OVER .001 [0.03] TO .003 [0.08] Cu PLATING TO ACHIEVE  $\varnothing .040 \pm .003$  [1.02  $\pm$  .07] HOLE.

10. "DIM XXX" TO BE DETERMINED BY THE CUSTOMER.

11. CONNECTOR KEEP-OUT ZONE.

12. USE FCI CAM TOOL 430140-019 TO APPLY CONNECTOR TO PCB.

13. A  $\Delta$  SYMBOL WILL BE NEXT TO ANY DIMENSION, VIEW, OR NOTE WHICH HAS BEEN MODIFIED WITH THE CURRENT DRAWING REVISION.

mat'l code				SEE NOTE 2		tolerances unless otherwise specified		CUSTOMER		FCI		www.fciconnect.com	
ltr	ecm no.	dr	date	linear	.XX+.01/0.X+0.3	projection	COPY	title		3ACP + 4P + 24S		R/A PF RCPT CABLE PORT	
C				angles	.XXX+.005/0.XX+0.13		INCH/MM	product family		PwrBlade		code	
				dr	1. BRUNGARD 10/06/04			size		dwg no		213	
				eng	M. GRAY 10/06/04	scale		A		51923-003		sheet	
				chr	M. GRAY 10/06/04	1:1						4 of 4	
				appd	M. GRAY 10/06/04								
sheet index	revision sheet												

Pro/E

cage code 22526

PDM: Rev:C

STATUS:Released

Printed: Dec 20, 2010