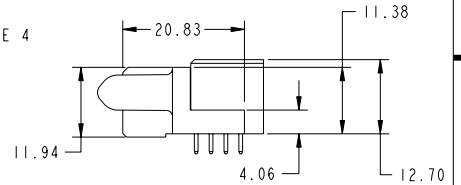
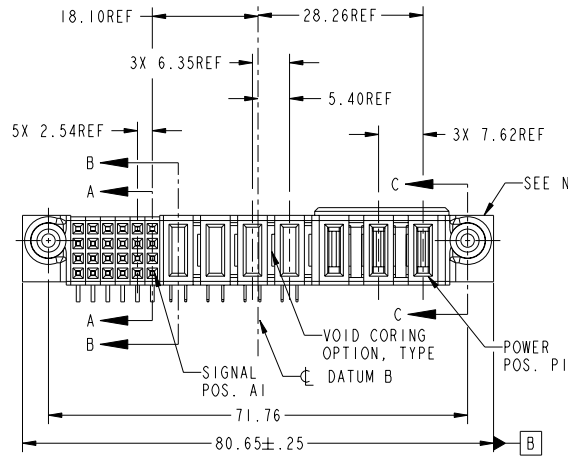
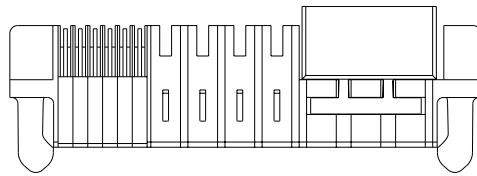


Tous droits strictement réservés. Reproduction ou communication o des liens interite sous quelque forme que ce soit sans autorisation écrite du propriétaire. Propriete de c FCI. Droits de reproduction FCI.



All rights strictly reserved. Reproduction or issue to third parties in any form whatever is not permitted without written authority from the proprietor. Property of FCI. Copyright FCI.

PRODUCT NO. 51923-005... NOTE: 3	ROWS D C B A	SIGNAL					POWER					E1			
		E2	6	5	4	3	2	1	P7	P6	P5		P4	P3	P2
		H	H	H	H	H	H	PC	PC	PC	PC	PG	PH	PH	
		G	G	G	G	G	G								
		F	F	F	F	F	F								
		E	E	E	E	E	E								



CODE	DIM "M" MATING LENGTH	CONTACT TYPE
PG	[1.07]	POWER
PC	[2.34]	POWER
H	[N/A]	SIGNAL
G	[N/A]	SIGNAL
F	[N/A]	SIGNAL
E	[N/A]	SIGNAL
PH	[2.34]	POWER

mat'l code		SEE NOTE	tolerances unless otherwise specified	CUSTOMER	www.fciconnect.com
lfr	ecm no.	dr	date	linear	
A	DG06-0438	JULIA	10/27/06	linear	0.XX ± 0.13
				angles	0.XXX ± 0.051
				angles	0° ± 2°
				dr	JULIA WANG 10/27/06
				enr	RYAN YUAN 10/27/06
				chr	BEER FU 10/27/06
				oppd	JOSEPH HSIA 10/27/06
sheet index	revision sheet	A	A	A	A
		1	2	3	4

CUSTOMER		COPY			product family PwrBlade	code 213
title		3ACP + 4P + 24S R/A SOLDER RECEPTACLE				
size	dwg no	scale			sheet 1 of 4	
A	51923-005	1:1				

cage code	22526	4
-----------	-------	---

Pro/E

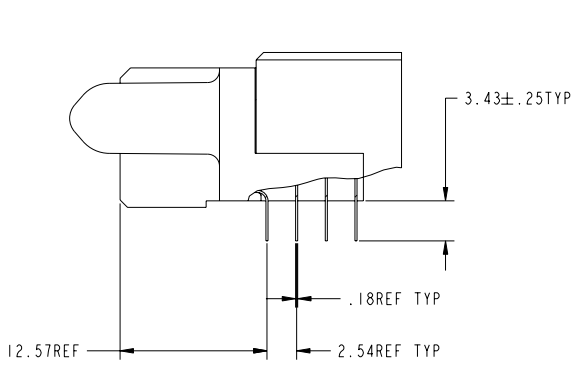
PDM: Rev:A STATUS:Released Printed: Dec 20, 2010

Tous droits strictement réservés. Reproduction ou communication o des liens interdite sous quelque forme que ce soit sans autorisation écrite du propriétaire. Propriete de c FCI. Droits de reproduction FCI.

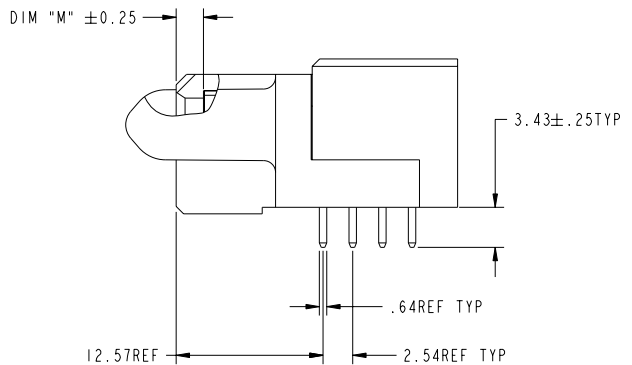
All rights strictly reserved. Reproduction or issue to third parties in any form whatever is not permitted without written authority from the proprietor. Property of FCI. Copyright FCI.



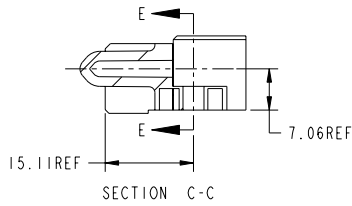
PRODUCT NUMBER
51923-005_
NOTE: 3



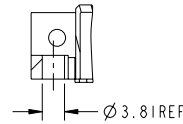
BROKEN-OUT SECTION A-A
SCALE 2:1



BROKEN-OUT SECTION B-B
SCALE 2:1



SECTION C-C



PARTIAL SECTION E-E

mat'l code				SEE NOTE	tolerances unless otherwise specified	CUSTOMER	FCI	
lfr	ecn no.	dr	date	linear	0.X ±0.3	COPY	www.fciconnect.com	
A				linear	0.XX ±0.13	projection	title 3ACP + 4P + 24S R/A SOLDER RECEPTACLE	
				angles	0.XXX ±0.051	 MM	product family	PwrBlade
				dr	0° ±2°		size	dwg no
				eng	JULIA WANG 10/27/06	scale	A	213
				chr	RYAN YUAN 10/27/06	1:1	51923-005	sheet
				appd	BEER FU 10/27/06			2 of 4
					JOSEPH HSIA 10/27/06			
sheet index	revision sheet						cage code	22526

Pro/E

PDM: Rev:A

STATUS: Released

Printed: Dec 20, 2010

Tous droits strictement réservés. Reproduction ou communication à des tiers interdite sous quelque forme que ce soit sans autorisation écrite du propriétaire. Propriété de c FCI. Droits de reproduction FCI.



All rights strictly reserved. Reproduction or issue to third parties in any form whatever is not permitted without written authority from the proprietor. Property of FCI. Copyright FCI.

PRODUCT NUMBER
51923-005_
NOTE: 3

NOTES:

1. DIMENSIONS AND TOLERANCES ARE IN ACCORDANCE WITH ASME Y14.5M, 1994 UNLESS OTHERWISE SPECIFIED.

CONNECTOR NOTES:

- ② HOUSING MATERIAL: UL 94 V-0 GLASS FILLED
HIGH-TEMP THERMOPLASTIC
POWER CONTACT MATERIAL: COPPER ALLOY
SIGNAL PIN MATERIAL: COPPER ALLOY
- 3. 51923-005;51923-005LF;51923-005GLF PLATING SPEC. SEE PRINT:10064183
- ④ MANUFACTURER'S NAME, P/N, AND DATE CODE TO APPEAR ON THIS SURFACE.
- 5. PRODUCT SPECIFICATION GS-12-149.
APPLICATION SPECIFICATION BUS-20-067.
- 6. PACKAGED IN TRAYS.

PCB NOTES:

- 7. ALL HOLE DIAMETERS ARE FINISHED HOLE SIZE.
- ⑧ MOUNTING HOLES, WHERE APPLICABLE, ARE UNPLATED.
- ⑨ $\varnothing 1.151 \pm 0.025$ DRILLED HOLES PLATED WITH 0.008 MIN SnPb OVER 0.03 TO 0.08 Cu PLATING TO ACHIEVE $\varnothing 1.02 \pm .07$ HOLE.
- ⑩ "DIM XXX" TO BE DETERMINED BY THE CUSTOMER.
- ⑪ CONNECTOR KEEP-OUT ZONE.

mat'l code				SEE NOTE	tolerances unless otherwise specified	CUSTOMER	FCI www.fciconnect.com	
ltr	ecn no.	dr	date	linear	0.X ± 0.3	COPY	title	
A				linear	0.XX ± 0.13	projection	3ACP + 4P + 24S R/A SOLDER RECEPTACLE	
				angles	0.XXX ± 0.051		product family	code
				dr	0° ± 2°	MM	PwrBlade	213
				engr	JULIA WANG 10/27/06	scale	size	sheet
				chr	RYAN YUAN 10/27/06	1:1	dwg no	4 of 4
				appd	BEER FU 10/27/06		A	51923-005
sheet index	revision sheet				JOSEPH HSIA 10/27/06			

cage code 22526

PDM: Rev:A STATUS:Released Printed: Dec 20, 2010