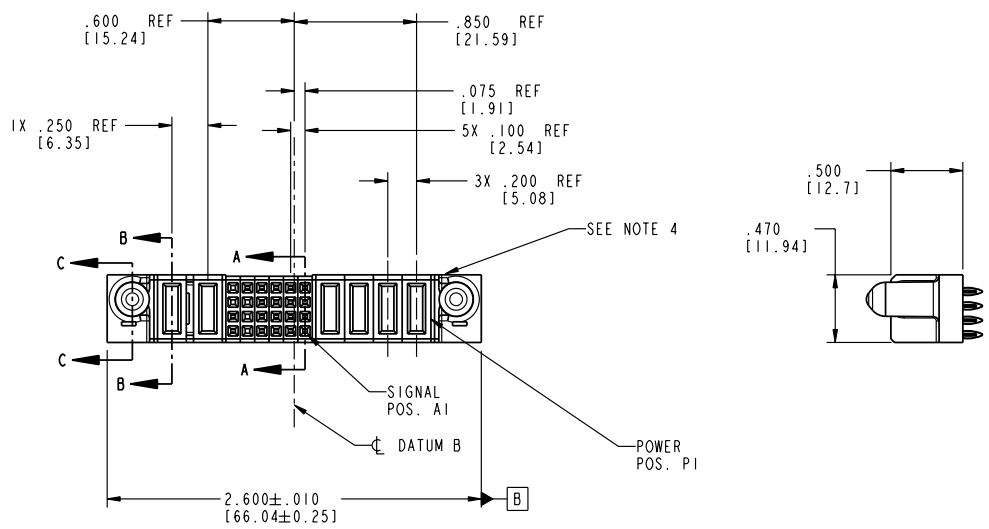


Tous droits strictement réservés. Reproduction ou communication o des liers interdite sous quelque forme que ce soit sans autorisation écrite du propriétaire. Propriete de c FCI. Droits de reproduction FCI.

FCI

All rights strictly reserved. Reproduction or issue to third parties in any form whatever is not permitted without written authority from the proprietor. Property of FCI. Copyright FCI.

PRODUCT NO.	ROWS	POWER		SIGNAL					POWER			E1			
		E2	P6	P5	6	5	4	3	2	1	P4		P3	P2	P1
51940-029	D C B A		PC	PF	X	F	F	F	F	F	F	F	F	F	



CODE	DIM "M" MATING LENGTH	CONTACT TYPE
F	N/A [N/A]	SIGNAL
PC	.042 [1.07]	POWER
PF	.092 [2.34]	POWER

mat'l code		SEE NOTE 2		tolerances unless otherwise specified		CUSTOMER		FCI		www.fciconnect.com	
lfr	ecn no.	dr	date	linear	.XX±.01/0.X±0.3		COPY		title		
A	V03-0058	TAB	01/13/03	angles	.XXX±.005/0.XX±0.13		projection		4P + 24S + 2P		
				dr	.XXX±.0020/0.XX±0.051		INCH/MM		VERTICAL PRESS FIT RECEPT		
				engr	0° ± 2°		scale		product family		
				chr	T. BRUNGARD 01/13/03		1:1		PwrBlade		
				appd	M. MOSTOLLER 01/13/03				code		
					M. MOSTOLLER 01/13/03				213		
sheet index	revision sheet	A	A	A	A	A	A	size		dwg no	
		1	2	3	4			A		51940-029	
								sheet		of	
								1		4	

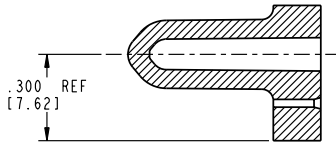
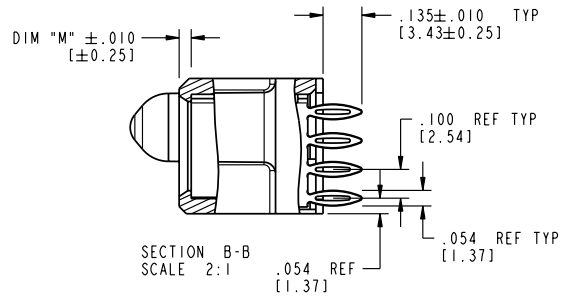
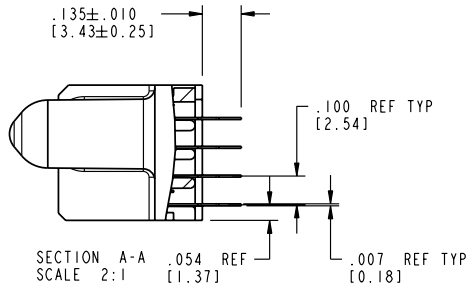
Pro/E 3 cage code 22526 4

Tous droits strictement réservés. Reproduction ou communication o des liers interdite sous quelque forme que ce soit sans autorisation écrite du propriétaire. Propriete de c FCI. Droits de reproduction FCI.

A
FCI

All rights strictly reserved. Reproduction or issue to third parties in any form whatever is not permitted without written authority from the proprietor. Property of FCI. Copyright FCI.

PRODUCT NUMBER
51940-029



mat'l code		SEE NOTE 2		tolerances unless otherwise specified		CUSTOMER		A FCI		www.fciconnect.com	
lfr	ecn no.	dr	date	linear	.XX±.01/0.X±0.3	projection	COPY	title		4P + 24S + 2P	
A				angles	.XXX±.005/0.XX±0.13			VERTICAL PRESS FIT RECEIPT		code	
				dr	.XXX±.002/0.XX±0.051			product family	PwrBlade	size	
				eng	T. BRUNGARD 01/13/03	scale	1:1	dwg no		sheet	
				chr	M. MOSTOLLER 01/13/03			A 51940-029		2 of 4	
				appd	M. MOSTOLLER 01/13/03			cage code		22526	
sheet index	revision sheet										

Pro/E

cage code 22526

PDM: Rev:A STATUS: Released Printed: Dec 20, 2010

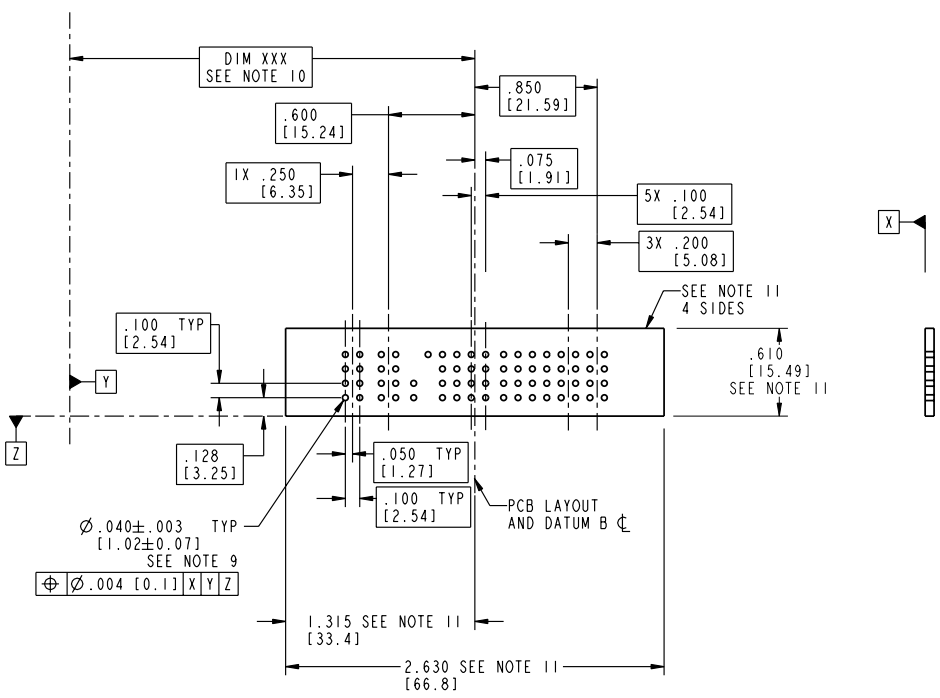
Tous droits strictement réservés. Reproduction ou communication o des liers interdite sous quelque forme que ce soit sans autorisation écrite du propriétaire. Propriete de c FCI. Droits de reproduction FCI.

FCI

All rights strictly reserved. Reproduction or issue to third parties in any form whatever is not permitted without written authority from the proprietor. Property of FCI. Copyright FCI.

PRODUCT NUMBER
51940-029

1 | 2 | 3 | 4



mat'l code		SEE NOTE 2		tolerances unless otherwise specified		CUSTOMER		FCI		www.fciconnect.com	
lfr	ecm no.	dr	date	linear	.XX±.01/0.X±0.3	projection	COPY	title			
A				angles	.XXX±.005/0.XX±0.13		INCH/MM	4P + 24S + 2P			
				dr	.XXX±.002/0.XX±0.051			VERTICAL PRESS FIT RECEPT			
				eng	T. BRUNGARD 01/13/03	scale	1:1	product family		PwrBlade	
				chr	M. MOSTOLLER 01/13/03	size		dwg no		code	
				appd	M. MOSTOLLER 01/13/03	A		51940-029		213	
sheet index	revision sheet							cage code		22526	

1 | 2 | Pro/E | 3 | cage code 22526 | 4

Tous droits strictement réservés. Reproduction ou communication o des tiers interdite sous quelque forme que ce soit sans autorisation écrite du propriétaire. Propriete de c FCI. Droits de reproduction FCI.

A
FCI

All rights strictly reserved. Reproduction or issue to third parties in any form whatever is not permitted without written authority from the proprietor. Property of FCI. Copyright FCI.

A

B

1 | 2

3 |

4

PRODUCT NUMBER
51940-029

NOTES:

1. DIMENSIONS AND TOLERANCES ARE IN ACCORDANCE WITH ASME Y14.5M, 1994 UNLESS OTHERWISE SPECIFIED.

CONNECTOR NOTES:

- ② HOUSING MATERIAL: UL 94 V-0 GLASS FILLED
HIGH-TEMP THERMOPLASTIC
POWER CONTACT MATERIAL: COPPER ALLOY
SIGNAL PIN MATERIAL: COPPER ALLOY
- 3. PLATING:
SIGNAL PINS: 30u"/0.76um Au OVER 50u"/1.27um Ni
POWER CONTACTS: 50u"/1.27um Ni UNDER ALL
WITH 30u"/0.76um Au ON CONTACT AREA
AND SnPb ON PCB INTERFACE
- ④ MANUFACTURER'S NAME, P/N, AND DATE CODE TO APPEAR ON THIS SURFACE.
- 5. PRODUCT SPECIFICATION GS-12-149.
APPLICATION SPECIFICATION BUS-20-067.
- 6. PACKAGED IN TRAYS.
- PCB NOTES:
- 7. ALL HOLE DIAMETERS ARE FINISHED HOLE SIZE.
- ⑧ MOUNTING HOLES, WHERE APPLICABLE, ARE UNPLATED.
- ⑨ $\varnothing .0453 \pm .0010$ [1.151 ± 0.025] DRILLED HOLES PLATED WITH .0003 [0.008] MIN SnPb OVER .001 [0.03] TO .003 [0.08] Cu PLATING TO ACHIEVE $\varnothing .040 \pm .003$ [1.02 ± .07] HOLE.
- ⑩ "DIM XXX" TO BE DETERMINED BY THE CUSTOMER.
- ⑪ CONNECTOR KEEP-OUT ZONE.

A

B

mat'l code		SEE NOTE 2		tolerances unless otherwise specified		CUSTOMER		FCI www.fciconnect.com	
litr	ecm no.	dr	date	linear	projection	COPY		title	
A				$.XX \pm .01 / 0.X \pm 0.3$	$XXX \pm .005 / 0.XX \pm 0.13$	INCH/MM		4P + 24S + 2P	
				angles	$XXX \pm .0020 / 0.XXX \pm 0.051$	scale		VERTICAL PRESS FIT RECEPT	
				dr	$0^\circ \pm 2^\circ$	1:1		product family PwrBlade code 213	
				eng	T. BRUNGARD 01/13/03			size 51940-029 sheet 4 of 4	
				chr	M. MOSTOLLER 01/13/03			cage code 22526	
				appd	M. MOSTOLLER 01/13/03			4	
sheet index	revision sheet								

1 | 2

Pro/E

3 |

4