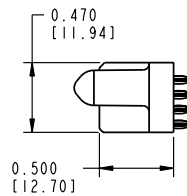
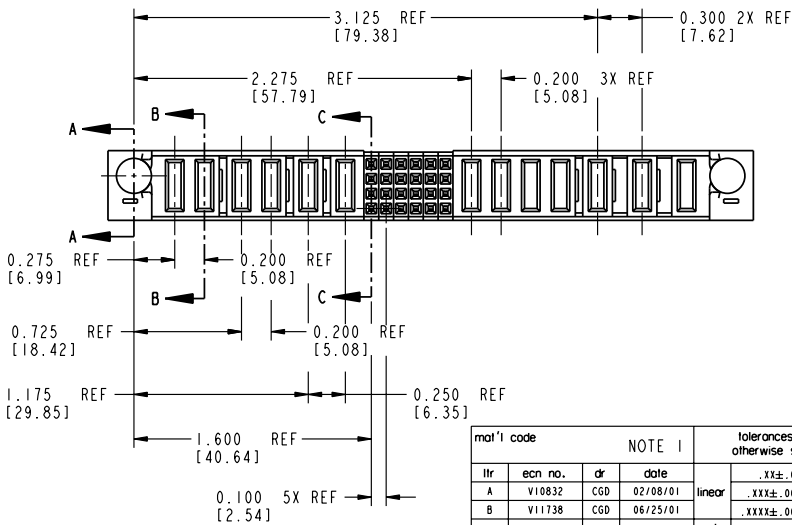
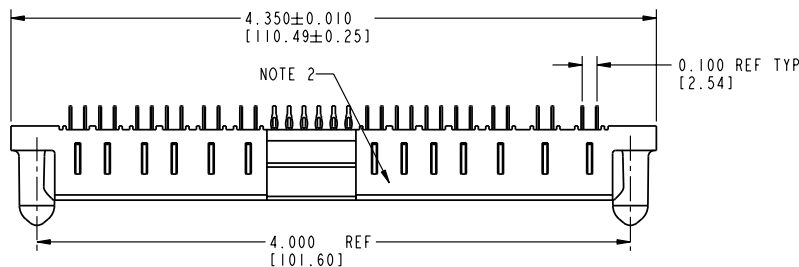


Tous droits strictement réservés. Reproduction ou communication o des tiers interdite  
 Tous droits réservés. Reproduction ou communication o des tiers interdite  
 Property of FCI. Copyright FCI. Droits de reproduction FCI.

All rights strictly reserved. Reproduction or issue to third parties in any  
 form is prohibited without written authority from the proprietor.  
 Property of FCI. Copyright FCI.

PRODUCT NUMBER  
51868-001



CONFIDENTIAL

mat'l code				NOTE 1	tolerances unless otherwise specified	CUSTOMER	FCI ELECTRONICS	
lfr	ecn no.	dr	date	linear	.xx±.01/0.xx±0.3	projection	www.fciconnect.com	
A	V10832	CGD	02/08/01		.xxx±.005/0.xx±0.13	COPY	title 3ACP + 4P + 24S + 6P	
B	V11738	CGD	06/25/01	angles	.xxx±.0020/.xxx±.051	INCH/MM	VERTICAL PRESS-FIT RECEPT SPECIAL CABLE	
				dr	0°±2°	scale	product family	PwrBlade
				engr	C. DAILY 10/20/00	1:1	size	PwrBlade
				chr	E. TREECE 10/20/00	A	dwg no	51868
				oppd	E. TREECE 10/20/00		code	213
sheet index	revision sheet	B	B	B			sheet	1 of 3
		1	2	3			code	22526

Pro/E

PDM: Rev:B

STATUS: Released

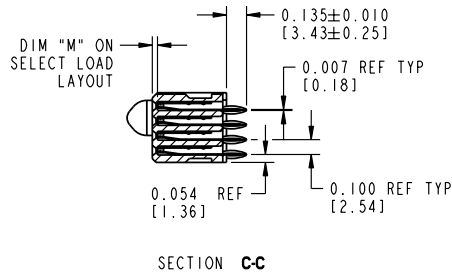
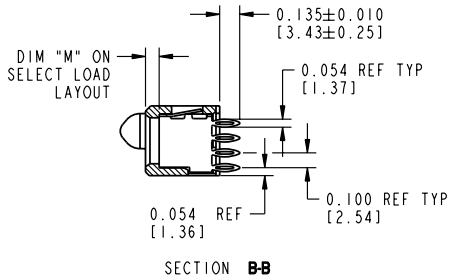
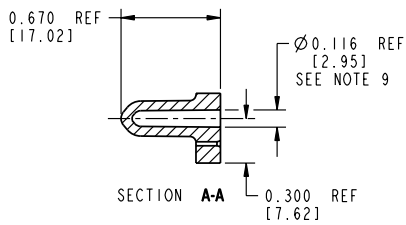
Printed: Sep 20, 2002

Tous droits strictement réservés. Reproduction ou communication o des tiers interdite sans l'aveu écrit de sans l'aveu écrit du propriétaire. Property of FCI. Copyright FCI. Droits de reproduction FCI.

All rights strictly reserved. Reproduction or issue to third parties in any form is prohibited without written authority from the proprietor. Property of FCI. Copyright FCI.



PRODUCT No.	ROWS	1   2														3														4													
51868 - 001	D C B A	E2	P13	P12	P11	P10	P9	P8	6	5	4	3	2	1	P7	P6	P5	P4	P3	P2	P1	E1																					
		○	PF	PF	PF	PF	PF	PF	PF	PF	PF	PF	PF	PF	PF	PF	PF	PF	PC	PF	PF	○																					



CODE	DIM "M"		CONTACT TYPE
F	N/A	[N/A]	SIGNAL
PF	0.092	[2.34]	POWER
PC	0.042	[1.07]	POWER

mat'l code		NOTE 1		tolerances unless otherwise specified		CUSTOMER		<b>FCI ELECTRONICS</b>	
lfr	ecr no.	dr	date	linear	.xx±.01/0.xx±0.3	projection	COPY	www.fciconnect.com	
B				angles	.xxx±.005/0.xx±0.13			title 3ACP + 4P + 24S + 6P	
				dr	.xxx±.0020/.xxx±.051			VERTICAL PRESS-FIT RECEIPT SPECIAL CABLE	
				engr	0°±2°	INCH/MM		product family	PwrBlade
				chr	C. DAILY 10/20/00	scale	A	size	213
				oppd	E. TREECE 10/20/00	1:1		dwg no	51868
					E. TREECE 10/20/00			sheet	2
sheet index	revision	sheet						cage code	22526

Pro/E

PDM: Rev:B

STATUS: Released

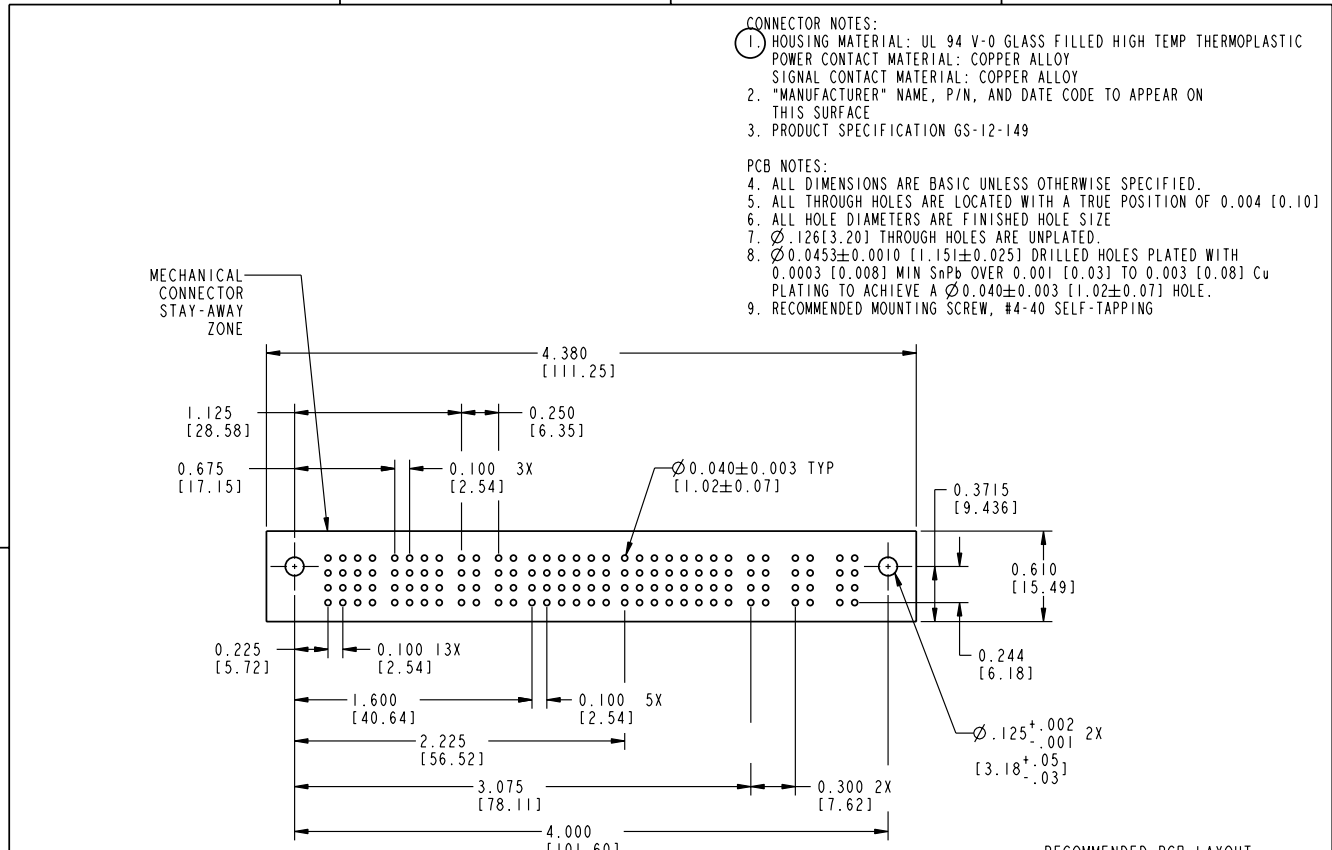
Printed: Sep 20, 2002

cage code 22526

Tous droits strictement réservés. Reproduction ou communication o des tiers interdite sans l'aveu écrit de nos services. Toute réimpression sans autorisation écrite du propriétaire. Property of FCI. Droits de reproduction FCI.



All rights strictly reserved. Reproduction or issue to third parties in any form is not permitted without written authority from the proprietor. Property of FCI. Copyright FCI.



- CONNECTOR NOTES:
- HOUSING MATERIAL: UL 94 V-0 GLASS FILLED HIGH TEMP THERMOPLASTIC
  - POWER CONTACT MATERIAL: COPPER ALLOY
  - SIGNAL CONTACT MATERIAL: COPPER ALLOY
  - "MANUFACTURER" NAME, P/N, AND DATE CODE TO APPEAR ON THIS SURFACE
  - PRODUCT SPECIFICATION GS-12-149
- PCB NOTES:
- ALL DIMENSIONS ARE BASIC UNLESS OTHERWISE SPECIFIED.
  - ALL THROUGH HOLES ARE LOCATED WITH A TRUE POSITION OF 0.004 [0.10]
  - ALL HOLE DIAMETERS ARE FINISHED HOLE SIZE
  - Ø .126 [3.20] THROUGH HOLES ARE UNPLATED.
  - Ø 0.0453 ± 0.0010 [1.15] ± 0.025] DRILLED HOLES PLATED WITH 0.0003 [0.008] MIN SnPb OVER 0.001 [0.03] TO 0.003 [0.08] Cu PLATING TO ACHIEVE A Ø 0.040 ± 0.003 [1.02 ± 0.07] HOLE.
  - RECOMMENDED MOUNTING SCREW, #4-40 SELF-TAPPING

RECOMMENDED PCB LAYOUT

mat'l code		NOTE 1		tolerances unless otherwise specified		CUSTOMER		FCI ELECTRONICS	
lfr	ecn no.	dr	date	linear	.xx±.01/0.xx±0.3	projection	COPY	www.fciconnect.com	
B					.xxx±.005/0.xx±0.13	INCH/MM		title	3ACP + 4P + 24S + 6P
				angles	.xxx±.0020/.xxx±.051	scale		product family	PwrBlade
				dr	0°±2°	1:1		size	dwg no
				engr	C. DAILY 10/20/00			code	213
				chr	E. TREECE 10/20/00			sheet	3
				appd	E. TREECE 10/20/00			51868	
sheet index	revision sheet								

Pro/E 3 cage code 22526 4

PDM: Rev:B STATUS: Released Printed: Sep 20, 2002