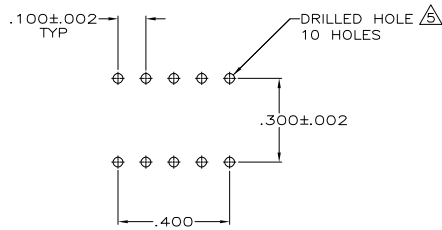
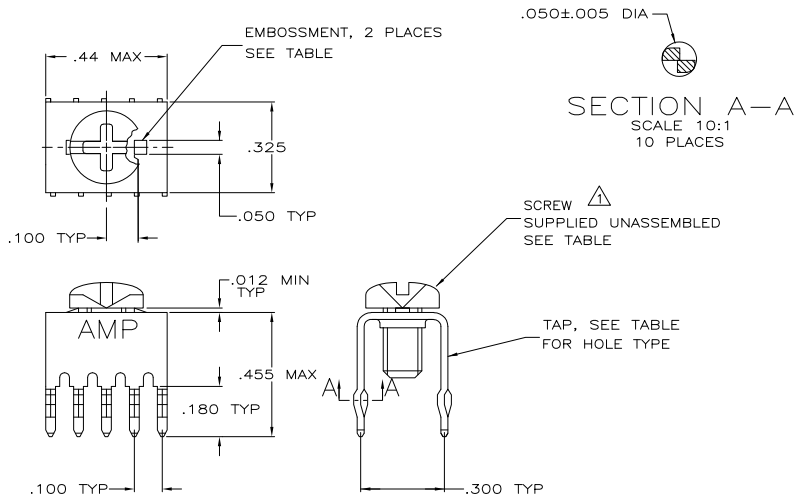


THIS DRAWING IS UNPUBLISHED. RELEASED FOR PUBLICATION  
 © COPYRIGHT BY TYCO ELECTRONICS CORPORATION. ALL RIGHTS RESERVED.

LOC		DIBT		REVISIONS		
P	LTR	DESCRIPTION	DATE	MIN	APD	
B		ECO-06-010266	17AUG06	LAM	AF	



PC BOARD PATTERN

- ⚠ TO PREVENT THREAD STRIPPING, SCREW TORQUE SHOULD NOT EXCEED 9 IN LBS.
- ⚠ TAP HOLE IS 6-32UNC-2B, TWO MIN THREADS.
- ⚠ TAP HOLE IS M4 X 0.7, TWO MIN THREADS.
- ⚠ TAP: .000150 MATTE TIN OVER .000050 NICKEL.
- ⚠ REFERENCE APPLICATION SPECIFICATION 114-11000 FOR DRILL HOLE SIZES AND FINISHES.

FINISH	HOLE TYPE	SCREW	EMBOSSMENT	PART NUMBER
⚠	⚠	NO	YES	1-5055558-1
⚠	⚠	NO	NO	5055558-7
⚠	⚠	993879-1	YES	5055558-4
⚠	⚠	NO	YES	5055558-3

THIS DRAWING IS A CONTROLLED DOCUMENT.		DIM J. ALCORTA 05-04-05 OK — 05-04-05 A. FRANTUM 05-04-05 S. FLICKINGER PRODUCT SPEC 108-11030 APPLICATION SPEC 114-11000 WEIGHT — FINISH ⚠	Tyco Electronics Corporation Harrisburg, PA 17105-3608 TAP, POWER DISTRIBUTION SIZE CASE CODE DRAWING NO A2 00779 C-5055558 CUSTOMER DRAWING	RESTRICTED TO — SCALE 4:1 SHEET 1 OF 1 REV B
--	--	--	---	---