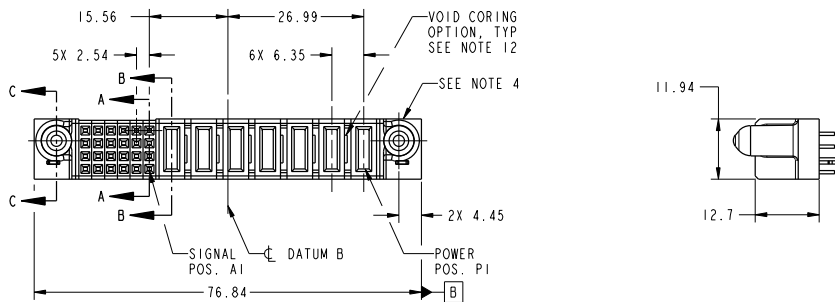


Tous droits strictement réservés. Reproduction ou communication à des tiers interdite sous quelque forme que ce soit sans autorisation écrite du propriétaire. Property of FCI. Droits de reproduction FCI.



All rights strictly reserved. Reproduction or issue to third parties in any form without prior written authority from the proprietor. Property of FCI. Copyright FCI.

PRODUCT NO.	ROWS	SIGNAL							POWER							
		E2	6	5	4	3	2	1	P7	P6	P5	P4	P3	P2	P1	E1
51752-025	DCBA															
NOTE: 3																



CODE	DIM "M" MATING LENGTH	CONTACT TYPE
E	[N/A]	SIGNAL
PA	[1.07]	POWER
HA	[N/A]	HOLD-DOWN

mal't code				SEE NOTES		tolerances unless otherwise specified		CUSTOMER		www.fciconnect.com	
itr	ecn no.	dr	date	linear	0.X ±0.5	projection		title 7P + 24S VERTICAL SOLDER RECEIPT			
A	D608-0119	JC	05/20/08	angles	0.XXX ±0.1		MM	product family PwrBlade		code 213	
				dr	0° ±2°	scale	1:1	size A		dwg no 51752-025	sheet 1 of 4
				eng	Jerome Chen 04/17/08						
				ctr	Jerome Chen 04/17/08						
				appd	Gary Hsieh 04/17/08						
				appd	Joseph Hsiao 04/17/08						
sheet index	revision sheet	A	A	A	A						
		1	2	3	4						

PDM: Rev:A

STATUS:Released

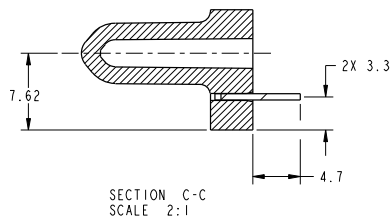
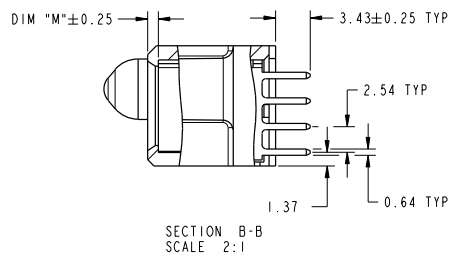
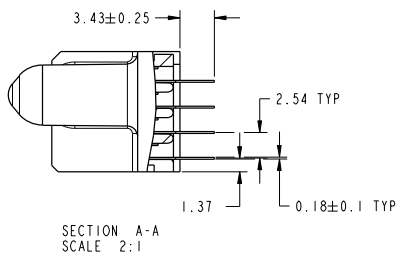
Printed: Dec 20, 2010

Tous droits strictement réservés. Reproduction ou communication à des tiers interdite sous quelque forme que ce soit sans autorisation écrite du propriétaire. Propriété de FCI. Droits de reproduction FCI.



All rights strictly reserved. Reproduction or issue to third parties in any form whatever is not permitted without written authority from the proprietor. Property of FCI. Copyright FCI.

PRODUCT NUMBER
51752-025...
NOTE: 3



mat'l code				tolerances unless otherwise specified		CUSTOMER		FCI	
lfr	ecn no.	dr	date	linear	0.X ±0.5	COPY	www.fciconnect.com		
A				linear	0.XX ±0.25	projection	title 7P + 24S		
				angles	0.XXX ±0.1		VERTICAL SOLDER RECEPT		
				or	0° ±2°		product family	PwrBlade	code
				eng	Jerome Chen 04/17/08	scale	size	dwg no	213
				chr	Jerome Chen 04/17/08	1:1	A	51752-025	sheet
				appd	Gary Hsieh 04/17/08				2 of 4
					Joseph Hsieh 04/17/08				
sheet index	revision sheet								

Pro/E

cage code 22526

PDM: Rev:A

STATUS:Released

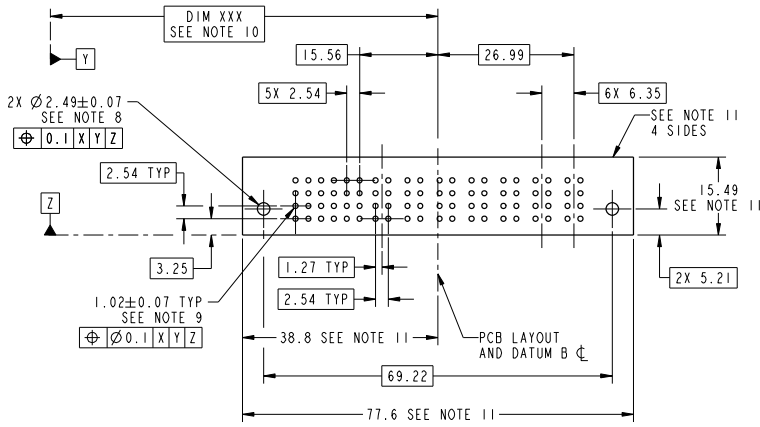
Printed: Dec 20, 2010

Tous droits strictement réservés. Reproduction ou communication à des tiers interdite sous quelque forme que ce soit sans autorisation écrite du propriétaire. Propriété de FCI. Droits de reproduction FCI.



All rights strictly reserved. Reproduction or issue to third parties in any form whatever is not permitted without written authority from the proprietor. Property of FCI. Copyright FCI.

PRODUCT NUMBER
51752-025...
NOTE: 3



RECOMMENDED PCB LAYOUT

mat'l code				tolerances unless otherwise specified		CUSTOMER		FCI	
ltr	ecn no.	dr	date	linear	angles	COPY	projection	title	www.fciconnect.com
A				0.X ± 0.5	0° ± 2°		MM	7P + 24S	
				0.XX ± 0.25	0° ± 2°			VERTICAL SOLDER RECEIPT	
				0.XXX ± 0.1	0° ± 2°			product family	PwrBlade
				dr Jerome Chen 04/17/08				size	213
				eng Jerome Chen 04/17/08				dwg no	3 of 4
				chr Gary Hsieh 04/17/08				A	51752-025
				appd Joseph Hsieh 04/17/08				scale	1:1
sheet index	revision sheet							cage code	22526

Pro/E

PDM: Rev:A

STATUS: Released

Printed: Dec 20, 2010

Tous droits strictement réservés. Reproduction ou communication à des tiers interdite sous quelque forme que ce soit sans autorisation écrite du propriétaire. Propriété de FCI. Droits de reproduction FCI.



All rights strictly reserved. Reproduction or issue to third parties in any form whatever is not permitted without written authority from the proprietor. Property of FCI. Copyright FCI.

PRODUCT NUMBER

51752-025...
NOTE: 3

NOTES:

1. DIMENSIONS AND TOLERANCES ARE IN ACCORDANCE WITH ASME Y14.5M, 1994 UNLESS OTHERWISE SPECIFIED.

CONNECTOR NOTES:

- 2 HOUSING MATERIAL: UL 94 V-0 GLASS FILLED HIGH-TEMP THERMOPLASTIC
POWER CONTACT MATERIAL: COPPER ALLOY
SIGNAL PIN MATERIAL: COPPER ALLOY
 - 3. PLATING SPEC.
51752-025, 51752-025LF PLATING SPEC. WAS SHOWN IN THE PRINT OF 10064183.
 - 4 MANUFACTURER'S NAME, P/N, AND DATE CODE TO APPEAR ON THIS SURFACE.
 - 5. PRODUCT SPECIFICATION GS-12-149,
APPLICATION SPECIFICATION BUS-20-067.
 - 6. PACKAGED IN TRAYS.
- PCB NOTES:
- 7. ALL HOLE DIAMETERS ARE FINISHED HOLE SIZE.
 - 8 MOUNTING HOLES, WHERE APPLICABLE, ARE UNPLATED.
 - 9 $\varnothing 1.151 \pm 0.025$ DRILLED HOLES PLATED WITH
0.008 MIN SnPb OR Sn OVER 0.03
TO 0.08 Cu PLATING TO ACHIEVE
 $\varnothing 1.02 \pm 0.07$ HOLE.
 - 10 "DIM XXX" TO BE DETERMINED BY THE CUSTOMER.
 - 11 CONNECTOR KEEP-OUT ZONE.
 - 12. THE VOID CORING IN BETWEEN POWER MODULES, SIGNAL MODULES AND END MODULES ARE OPTIONAL AND THE SHAPE MAY BE DIFFERENT FOR OPTIMIZE THE MOLDING PROCESS. THE VOID CORING WILL NOT EFFECT TO PRODUCT FUNCTION.

mat'l code				tolerances unless otherwise specified		CUSTOMER		FCI	
ltr	ecn no.	dr	date	linear	angles	projection	scale	product family	code
A				0.X ±0.5	0.XX ±0.25		1:1	PwrBlade	213
				0.XXX ±0.1	0° ±2°				
				eng Jerome Chen 04/17/08	app Jerome Chen 04/17/08				
				ctr Gary Hsieh 04/17/08	app Gary Hsieh 04/17/08				
				app Joseph Hsie 04/17/08					
sheet index	revision sheet								

PDM: Rev:A

STATUS:Released

Printed: Dec 20, 2010