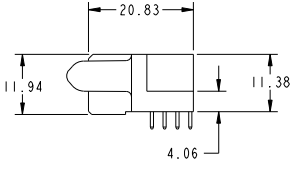
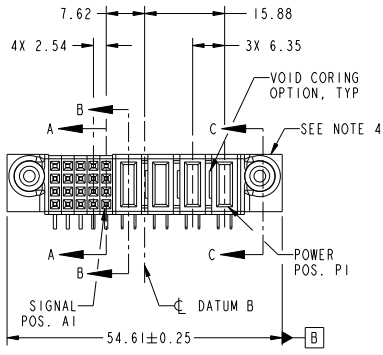


Tous droits strictement réservés. Reproduction ou communication à des tiers interdite sous quelque forme que ce soit sans autorisation écrite du propriétaire. Propriété de c.FCI. Droits de reproduction FCI.

All rights strictly reserved. Reproduction or issue to third parties in any form whatsoever is not permitted without written authority from the proprietor. Property of FCI. Copyright FCI.

PRODUCT NO.	ROWS	SIGNAL				POWER					
		E2	5	3	2	P4	P3	P2	P1	E1	
51772-012 NOTE ③	D C B A	H	H	H	H	PA	PA	PA	PA		
		G	G	G	G						
		F	F	F	F						
		E	E	E	E						



CODE	DIM "M" MATING LENGTH	CONTACT TYPE
PA	[1.07]	POWER
H	[N/A]	SIGNAL
G	[N/A]	SIGNAL
F	[N/A]	SIGNAL
E	[N/A]	SIGNAL

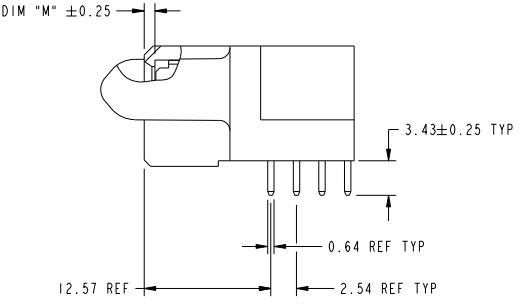
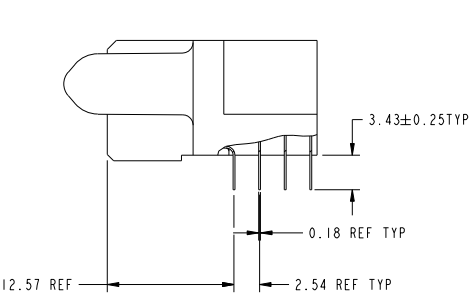
mat'l code		SEE NOTE		tolerances unless otherwise specified		CUSTOMER		FCI		www.fciconnect.com	
litr	ecn no.	dr	date	linear	0.X ± 0.3	COPY		projection	title	4P + 20S	
A	D609-0139	WD	05/06/09		0.XX ± 0.13				R/A STB RECEPTACLE		
				angles	0.XXX ± 0.051					PwrBlade	code
				gr	0						213
				eng	0						sheet
				chr	0						1 of 4
				appd	0						
sheet index	revision sheet	A	A	A	A						
		1	2	3	4						

Pro/E 3 cage code 22526 4

Tous droits strictement réservés. Reproduction ou communication à des tiers interdite sous quelque forme que ce soit sans autorisation écrite du propriétaire. Propriété de c.FCI. Droits de reproduction FCI.

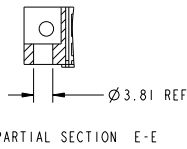
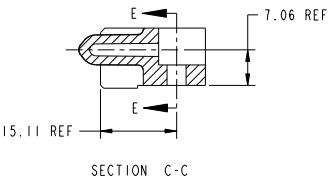
All rights strictly reserved. Reproduction or issue to third parties in any form whatsoever is not permitted without written authority from the proprietor. Property of FCI. Copyright FCI.

PRODUCT NUMBER
51772-012...
NOTE: 3



BROKEN-OUT SECTION A-A
SCALE 2:1

BROKEN-OUT SECTION B-B
SCALE 2:1



SECTION C-C

PARTIAL SECTION E-E

mat'l code		SEE NOTE		tolerances unless otherwise specified		CUSTOMER		FCI	
ltr	ecm no.	dr	date	linear	0.X ± 0.3	COPY	title	www.fciconnect.com	
A				0.XX ± 0.13		projection	4P + 20S		
				0.XXX ± 0.051		MM	R/A STB RECEPTACLE		
				angles	0° ± 2°	scale	Pwr Blade		
				dr	Worres Da 04/28/09	1:1	code		
				eng	Worres Da 04/28/09		213		
				chr	PM ZHENG 04/28/09		2 of 4		
				appd	JOSEPH HSIA 04/28/09				
sheet index	revision sheet								

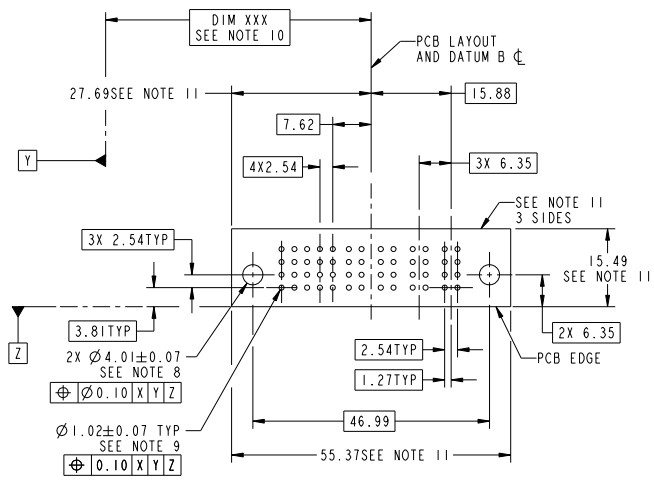
Pro/E 3 cage code 22526 4

Tous droits strictement réservés. Reproduction ou communication à des tiers interdite sous quelque forme que ce soit sans autorisation écrite du propriétaire. Propriété de c.FCI. Droits de reproduction FCI.



All rights strictly reserved. Reproduction or issue to third parties in any form whatsoever is not permitted without written authority from the proprietor. Property of FCI. Copyright FCI.

PRODUCT NUMBER
51772-012...
NOTE: 3



RECOMMENDED PCB LAYOUT

mat'l code		SEE NOTE		tolerances unless otherwise specified		CUSTOMER		FCI	
ltr	ecm no.	dr	date	linear	0.X ± 0.3	COPY		www.fciconnect.com	
A				linear	0.XX ± 0.13	projection		title 4P + 20S	
				angles	0.XXX ± 0.051			R/A STB RECEPTACLE	
				dr	0° ± 2°	MM		product family PwrBlade	
				eng	04/28/09	scale		size 213	
				chr	PM ZHENG 04/28/09			dwg no 51772-012	
				appd	JOSEPH HSIA 04/28/09			sheet 3 of 4	
sheet index	revision sheet							code 22526	

Tous droits strictement réservés. Reproduction ou communication à des tiers interdite sous quelque forme que ce soit sans autorisation écrite du propriétaire. Propriété de FCJ. Droits de reproduction FCJ.



All rights strictly reserved. Reproduction or issue to third parties in any form, whatever is not permitted without written authority from the proprietor. Property of FCJ. Copyright FCJ.

PRODUCT NUMBER

51772-012_
NOTE: 3

NOTES:

1. DIMENSIONS AND TOLERANCES ARE IN ACCORDANCE WITH ASME Y14.5M, 1994 UNLESS OTHERWISE SPECIFIED.

CONNECTOR NOTES:

- 2. HOUSING MATERIAL: UL 94 V-0 GLASS FILLED HIGH-TEMP THERMOPLASTIC
POWER CONTACT MATERIAL: COPPER ALLOY
SIGNAL PIN MATERIAL: COPPER ALLOY
 - 3. SEE ITEM 5 & 6 IN PRINT 10064183 FOR PLATING SPEC OF 51772-012 AND 51772-012LF RESPECTIVELY.
 - 4. MANUFACTURER'S NAME, P/N, AND DATE CODE TO APPEAR ON THIS SURFACE.
 - 5. PRODUCT SPECIFICATION GS-12-149.
APPLICATION SPECIFICATION BUS-20-067.
 - 6. PACKAGED IN TRAYS.
- PCB NOTES:
- 7. ALL HOLE DIAMETERS ARE FINISHED HOLE SIZE.

- 8. MOUNTING HOLES, WHERE APPLICABLE, ARE UNPLATED.
- 9. $\varnothing 1.151 \pm 0.025$ DRILLED HOLES PLATED WITH 0.008 MIN SnPb OR Sn OVER 0.03 TO 0.08 Cu PLATING TO ACHIEVE $\varnothing 1.02 \pm .07$ HOLE.
- 10. "DIM XXX" TO BE DETERMINED BY THE CUSTOMER.
- 11. CONNECTOR KEEP-OUT ZONE.

mat'l code		SEE NOTE		tolerances unless otherwise specified		CUSTOMER		FCJ	
litr	ecm no.	dr	date	linear	angles	projection	title	product family	code
A				$0.X \pm 0.3$	$0.XX \pm 0.13$		4P + 20S		
				$0.XXX \pm 0.051$	$0^\circ \pm 2^\circ$		R/A STB RECEPTACLE	PwrBlade	213
				dr Morris Da 04/28/09	eng Morris Da 04/28/09	scale 1:1	size	dwg no	sheet
				chr PM ZHENG 04/28/09	appd JOSEPH HSIA 04/28/09		A	51772-012	4 of 4
sheet index	revision sheet								

Pro/E 3 cage code 22526 4

PDM: Rev:A

STATUS:Released

Printed: Dec 20, 2010