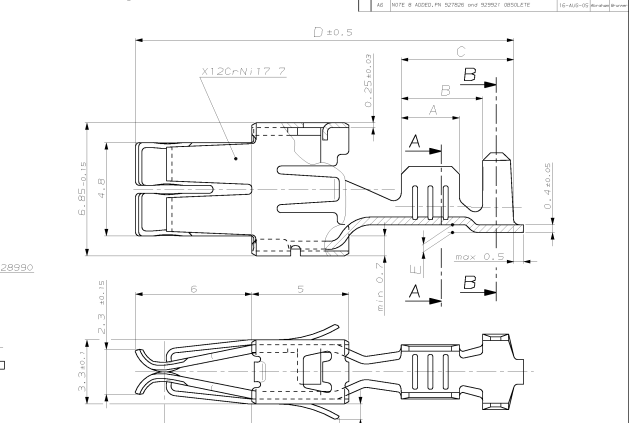
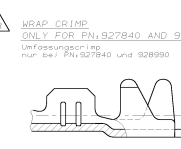
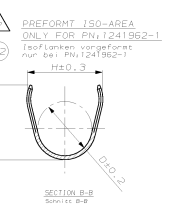


REV.	DATE	DESCRIPTION	BY	CHK
1	13-03-11	NEW VARIANTS ADDED	ABT	H.T.
2	13-07-12	NEW VARIANTS ADDED	RAL	R.W.
3	16-08-13	NEW VARIANTS ADDED	RAL	R.W.
4	14-03-15	CORRECTED DIM. 20 TO 23	RAL	R.W.
5	20-09-14	NEW VARIANTS ADDED	RAL	R.W.
6	16-04-15	NOTE # ADDED, FN, S2780 AND S2787 CHANGED	RAL	R.W.

VERSION A

(UNSEALED / ungedichtet)

AMP	ORDER-No.	AMP	ORDER-No.	NATURAL	DIAPHR.	DIR	WH	SIZE	CRIMP	CRIMP	CRIMP	APPL. TOL.	HAND	SM	AMP	ORDER-No.
				Alt	Alt	Alt	Alt	Alt	Alt	Alt	Alt	Alt	Alt	Alt		
1-927820-1	1-927820-1	1-927820-2	1-927820-3	1-927820-4	1-927820-5	1-927820-6	1-927820-7	1-927820-8	1-927820-9	1-927820-10	1-927820-11	1-927820-12	1-927820-13	1-927820-14	1-927820-15	1-927820-16



VERSION B

(SINGLE WIRE SEAL / Einzel-Dichtungs-System)

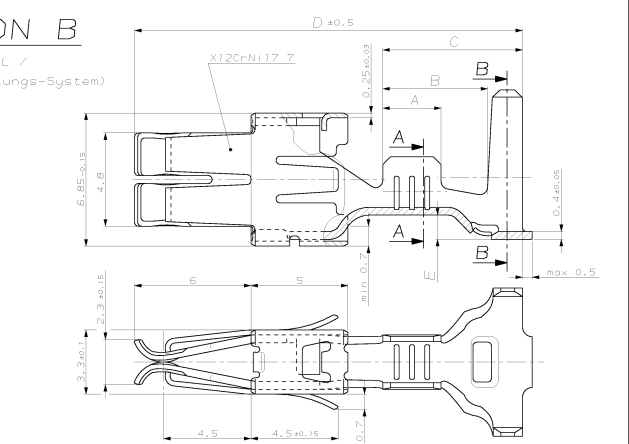
REMARKS
 Bemerkungen

CONTACT ZONE SELECTIVE PRE SILVER PLATED MIN 3-4.5 μm
 Kontaktzone selektiv vorversilbert min. 3-4,5 μm

CONTACT ZONE SELECTIVE PRE SILVER PLATED MIN 1-1.5 μm
 Kontaktzone selektiv vorversilbert min. 1-1,5 μm

CONTACT BODY, ELECTRO TIN PLATED OVER NICKEL CONTACT AREA, GOLD PLATED
 Kontaktkörper, gal. verzinkt über Nickel Kontaktzone verguldet

CONTACT BODY, ELECTRO TIN PLATED OVER NICKEL CONTACT AREA, SELECTIVE NICKEL PLATED 2-4μm
 Kontaktkörper, gal. verzinkt über Nickel Kontaktzone selektiv vernickelt 2-4μm



1-1579007-6 927107-1 1-1579007-6 927107-1		1-1579007-6 927107-1	AMP Standard Power Timer Contact 1-1579007-6 927107-1
--	--	-------------------------	---