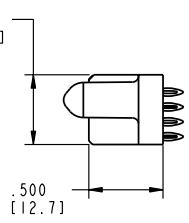
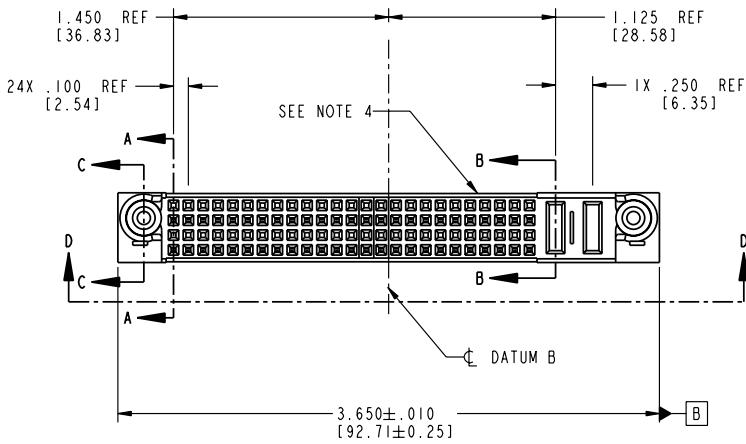


Tous droits strictement réservés. Reproduction ou communication o des tiers interdite sans autorisation écrite du propriétaire. Property of FCI. Droits de reproduction FCI.

All rights strictly reserved. Reproduction or issue to third parties in any form is not permitted without written authority from the proprietor. Property of FCI. Copyright FCI.



PRODUCT NO.	ROWS	SIGNAL																				POWER													
		E2	25	24	23	22	21	20	19	18	17	16	15	14	13	12	11	10	9	8	7	6	5	4	3	2	1	P2	P1	E1					
51752-005	D	X	X	X	X	X	X	X	X	X	X	X	X	X	X	X	X	X	X	X	X	X	X	X	X	X	X	X	X	X	X	X	PC	PF	X
	C	F	F	F	F	F	F	F	F	F	F	F	F	F	F	F	F	F	F	F	F	F	F	F	F	F	F	F	F	F	F				
	B	X	X	X	X	X	X	X	X	X	X	X	X	X	X	X	X	X	X	X	X	X	X	X	X	X	X	X	X	X	X	X			
A		F	F	F	F	F	F	F	F	F	F	F	F	F	F	F	F	F	F	F	F	F	F	F	F	F	F	F	F	F	F				



CODE	DIM "M" MATING LENGTH	CONTACT TYPE
F	N/A [N/A]	SIGNAL
PC	.042 [1.07]	POWER
PF	.092 [2.34]	POWER

mat'l code				SEE NOTE 2	tolerances unless otherwise specified	CUSTOMER	FCI ELECTRONICS	
lfr	ecm no.	dr	date	linear	angles	projection	copy	www.fciconnect.com
A	V12797	DAI	12/17/01	.XX±.01/0.XX±0.3	°±°	INCH/MM	COPY	title
				.XXX±.005/0.XX±0.13				2P+100 S
				.XXX±.0020/0.XX±0.051				VERTICAL PRESSFIT RECEPTACLE
				dr D. INGRAM 12/17/01				product family PwrBlade
				enrg M.MOSTOLLER 12/17/01				code 213
				chr M.MOSTOLLER 12/17/01				size 1 of 4
				oppr M.MOSTOLLER 12/17/01				scale 1:1
sheet index	revision sheet	A	A	A	A			dwg no A
		1	2	3	4			51752-005

Pro/E 3 cage code 22526 4

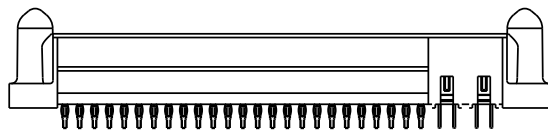
PDM: Rev:A STATUS:Released Printed: Oct 08, 2006

Tous droits strictement réservés. Reproduction ou communication a des tiers interdite sans autorisation écrite du propriétaire. Property of FCI. Droits de reproduction FCI.

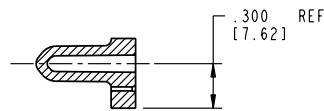
All rights strictly reserved. Reproduction or issue to third parties in any form is not permitted without written authority from the proprietor. Property of FCI. Copyright FCI.



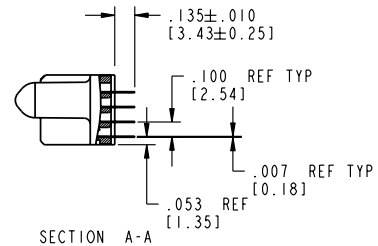
PRODUCT NUMBER
51752-005



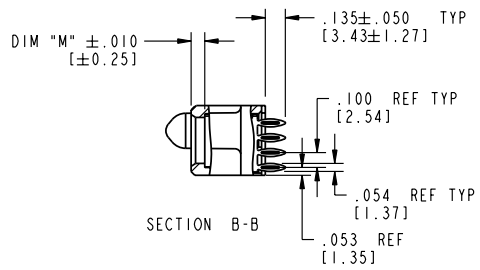
VIEW D-D



SECTION C-C



SECTION A-A



SECTION B-B

mat'l code		SEE NOTE 2		tolerances unless otherwise specified		CUSTOMER		ELECTRONICS www.fciconnect.com	
lfr	ecm no.	dr	date	linear	.XX±.01/0.XX±0.3	projection	COPY	title	2P +100 S
A				linear	.XXX±.005/0.XX±0.13	projection		VERTICAL PRESSFIT RECEPTACLE	
				angles	.XXX±.0020/0.XX±0.051	projection			
				dr	D. INGRAM 12/17/01	projection		product family	PwrBlade
				enr	M. MOSTOLLER 12/17/01	INCH/MM		size	dwg no
				chr	M. MOSTOLLER 12/17/01	scale		A	51752-005
				appd	M. MOSTOLLER 12/17/01	scale	1:1	code	213
sheet index	revision sheet							sheet	2

Pro/E

cage code 22526

PDM: Rev:A

STATUS Released

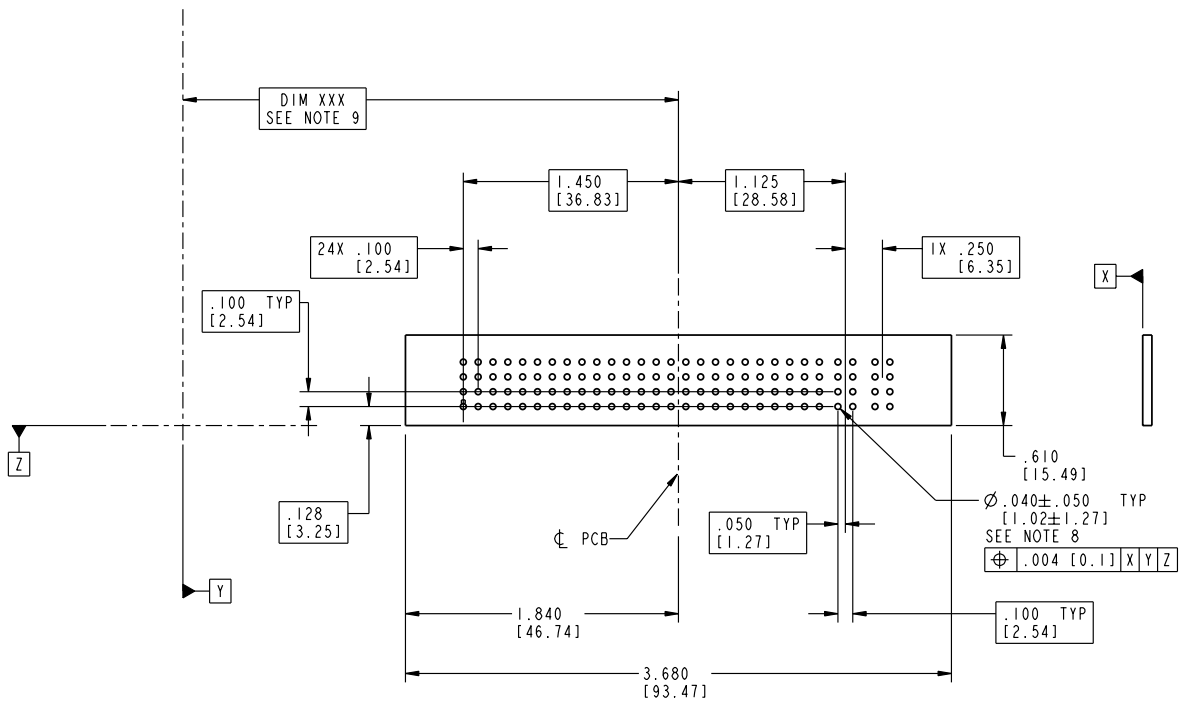
Printed: Oct 08, 2006

Tous droits strictement réservés. Reproduction ou communication o des tiers interdite
 Tous droits réservés. Reproduction ou communication o des tiers interdite
 Property of FCI. Copyright FCI. Droits de reproduction FCI.



All rights strictly reserved. Reproduction or issue to third parties in any
 form is not permitted without written authority from the proprietor.
 Property of FCI. Copyright FCI.

PRODUCT NUMBER
51752-005



mat'l code		SEE NOTE 2	tolerances unless otherwise specified		CUSTOMER	ELECTRONICS www.fciconnect.com
lfr	ecm no.	dr	date	linear	COPY	
A				$.XX \pm .01 / 0 .XX \pm 0.3$	projection	title
				$.XXX \pm .005 / 0 .XX \pm 0.13$		2P +100 S
				$.XXX \pm .0020 / 0 .XX \pm 0.051$	INCH/MM	VERTICAL PRESSFIT RECEPTACLE
				angles	scale	product family
				$0^\circ + 7^\circ$	1:1	PwrBlade
				dr		code
				D. INGRAM		213
				enr		sheet
				M. MOSTOLLER		3
				chr		
				M. MOSTOLLER		
				appd		
				M. MOSTOLLER		
sheet index	revision sheet					

Pro/E

cage code 22526

PDM: Rev:A

STATUS Released

Printed: Oct 08, 2006

Tous droits strictement réservés. Reproduction ou communication o des tiers interdite sans autorisation écrite du propriétaire. Property of FCI. © Copyright FCI. Droits de reproduction FCI.

All rights strictly reserved. Reproduction or issue to third parties in any form is not permitted without written authority from the proprietor. Property of FCI. © Copyright FCI.



PRODUCT NUMBER
51752-005

NOTES:

1. DIMENSIONS AND TOLERANCES ARE IN ACCORDANCE WITH ASME Y14.5M, 1994 UNLESS OTHERWISE SPECIFIED.

CONNECTORS NOTES:

② HOUSING MATERIAL: UL 94 V-0 GLASS FILLED HIGH TEMP THERMO PLASTIC
POWER CONTACT MATERIAL: COPPER ALLOY
SIGNAL PIN MATERIAL: COPPER ALLOY

3. PLATING:

SIGNAL PINS: 30u"/0.76um Au OVER 50u"/1.27um Ni
POWER CONTACTS: 50u"/1.27um Ni UNDER ALL WITH 30u"/0.76um Au ON CONTACT AREA AND SnPb ON PCB INTERFACE

④ "MANUFACTURER" NAME, P/N, AND DATE CODE TO APPEAR ON THIS SURFACE.

5. PRODUCT SPECIFICATION GS-12-149.

PCB - NOTES:

6. ALL HOLE DIAMETERS ARE FINISHED HOLE SIZE.

⑦ HOLD DOWN THROUGH HOLES ARE UNPLATED.

⑧ $\varnothing .0453 \pm 0.0010$ [1.51 \pm 0.025] DRILLED HOLES PLATED WITH 0.0003 [0.008] MIN SnPb OVER .001 [0.03] TO .003 [0.08] Cu PLATING TO ACHIEVE $\varnothing .040 \pm .003$ [1.02 \pm .07] HOLE.

⑨ "DIM XXX" TO BE DETERMINED BY THE CUSTOMER.

mat'l code				SEE NOTE 2	tolerances unless otherwise specified		CUSTOMER	ELECTRONICS www.fciconnect.com	
lfr	ecm no.	dr	date	linear	.XX±.01/0.XX±0.3	projection	COPY		
A				linear	.XXX±.005/0.XX±0.13		title 2P +100 S VERTICAL PRESSFIT RECEPTACLE		
				angles	.XXX±.0020/0.XX±0.051		product family PwrBlade code 213		
				dr	D. INGRAM 12/17/01		size dwg no 51752-005 sheet 4		
				enr	M.MOSTOLLER 12/17/01	INCH/MM	scale 1:1		
				chr	M.MOSTOLLER 12/17/01				
				oppd	M.MOSTOLLER 12/17/01				
sheet index	revision sheet								

Pro/E

cage code 22526

PDM: Rev:A

STATUS: Released

Printed: Oct 08, 2006