

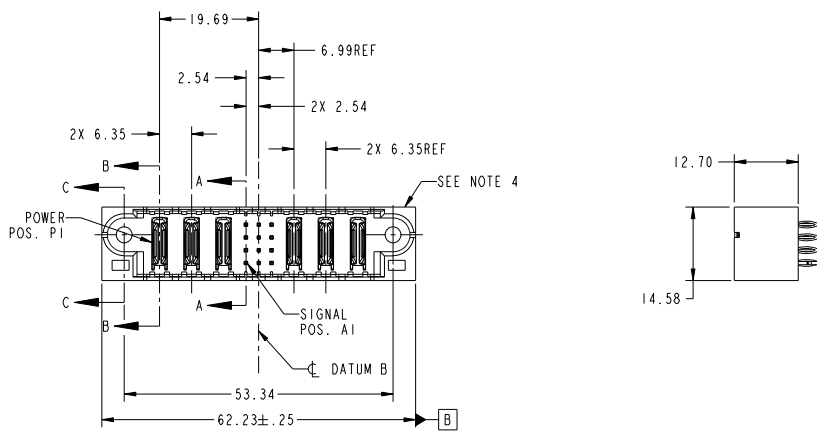
Tous droits strictement réservés. Reproduction ou communication à des tiers interdite sous quelque forme que ce soit sans autorisation écrite du propriétaire. Propriété de c.FCI. Droits de reproduction FCI.

All rights strictly reserved. Reproduction or issue to third parties in any form without written authority from the proprietor. Property of FCI. Copyright FCI.



| PRODUCT NO. | ROWS | 1 | | 2 | | POWER | | | SIG. | | | POWER | | | E2 |
|-------------|------------------|----|----|----|----|-------|---|---|------|----|----|-------|---|---|----|
| | | E1 | P1 | P2 | P3 | 1 | 2 | 3 | P4 | P5 | P6 | K | G | G | |
| 51710-018 | D C B A | | | | | | | | | | | | | | |

NOTE: 3



| CODE | DIM "M" MATING LENGTH | CONTACT TYPE |
|------|-----------------------|--------------|
| HA | [N/A] | HOLD-DOWN |
| PC | [N/A] | POWER |
| K | [5.59] | SIGNAL |
| G | [6.86] | SIGNAL |

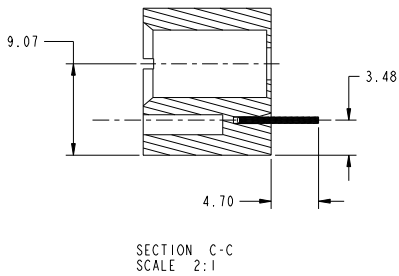
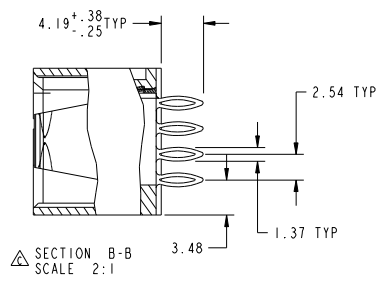
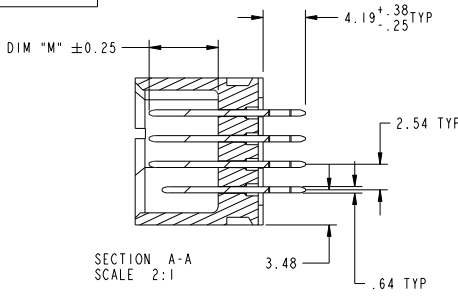
| mat'l code | | | | SEE NOTE | | tolerances unless otherwise specified | | CUSTOMER | | FCI | |
|-------------|----------------|-------|----------|----------|-------------|---------------------------------------|----------------|----------|----------------------------------|-----|--|
| ltr | con no. | dr | date | linear | 0.X ±0.5 | projection | COPY | | www.fciconnect.com | | |
| A | D606-0018 | SW | 01/13/06 | | 0.XX ±0.25 | | title | | 3P + 12S + 3P VERTICAL PF HEADER | | |
| B | D607-0357 | JULIA | 09/10/07 | angles | 0.XXX ±.10 | | product family | | PwrBlade | | |
| C | D608-0273 | JW | 12/05/08 | | 0° ±2° | | size | | 213 | | |
| | | | | dr | STEVEN WANG | 01/13/06 | scale | | 1 of 4 | | |
| | | | | eng | STEVEN WANG | 01/13/06 | A | | 51710-018 | | |
| | | | | chr | BEER FU | 01/13/06 | 1:1 | | | | |
| | | | | appd | JOSEPH HSIA | 01/13/06 | | | | | |
| sheet index | revision sheet | C | C | C | C | C | | | cage code 22526 | | |
| 1 | 2 | 3 | 4 | | | | | | | | |

Tous droits strictement réservés. Reproduction ou communication à des tiers interdite sous quelque forme que ce soit sans autorisation écrite du propriétaire. Propriété de c.FCI. Droits de reproduction FCI.



All rights strictly reserved. Reproduction or issue to third parties in any form whatsoever is not permitted without written authority from the proprietor. Property of FCI. Copyright FCI.

PRODUCT NUMBER
51710-018...
NOTE: 3



| mat'l code | | SEE NOTE | | tolerances unless otherwise specified | | CUSTOMER | |
|-------------|----------------|----------|------|---------------------------------------|----------------------|------------|--------------------|
| lfr | ecm no. | dr | date | linear | 0.X ±0.5 | COPY | www.fciconnect.com |
| C | | | | | 0.XX ±0.25 | projection | |
| | | | | angles | 0.XXX ±0.10 | | title |
| | | | | dr | 0° ±2° | | 3P + 12S + 3P |
| | | | | eng | STEVEN WANG 01/13/06 | scale | VERTICAL PF HEADER |
| | | | | chr | STEVEN WANG 01/13/06 | 1:1 | product family |
| | | | | appd | BEER FU 01/13/06 | | PwrBlade |
| | | | | | JOSEPH HSIA 01/13/06 | | code |
| sheet index | revision sheet | | | | | | 213 |
| | | | | | | | sheet |
| | | | | | | | 2 |

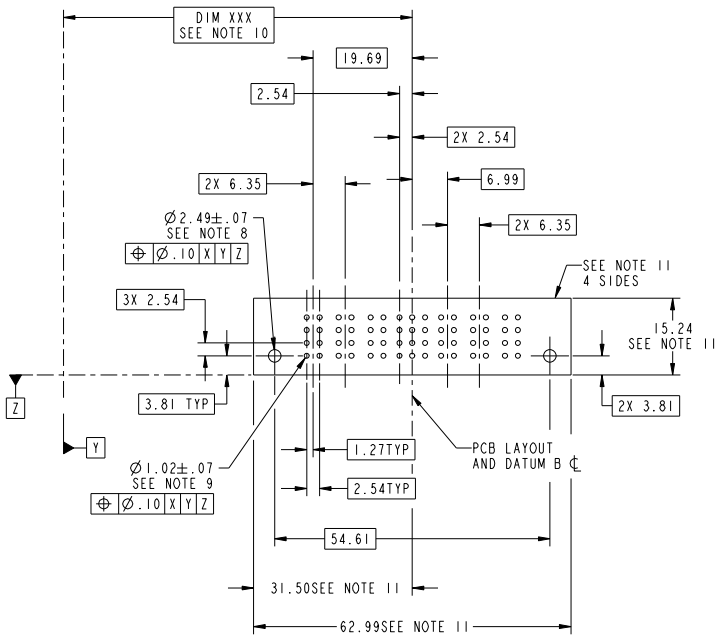
cage code 22526

Tous droits strictement réservés. Reproduction ou communication à des tiers interdite sous quelque forme que ce soit sans autorisation écrite du propriétaire. Propriété de c.FCI. Droits de reproduction FCI.



All rights strictly reserved. Reproduction or issue to third parties in any form whatsoever is not permitted without written authority from the proprietor. Property of FCI. Copyright FCI.

PRODUCT NUMBER
51710-018...
NOTE: 3



| mat'l code | | SEE NOTE | | tolerances unless otherwise specified | | CUSTOMER | |
|-------------|----------------|----------|------|---------------------------------------|----------------------|----------------|--------------------|
| ltr | ecm no. | dr | date | linear | 0.X ±0.5 | COPY | www.fciconnect.com |
| C | | | | | 0.XX ±0.25 | projection | |
| | | | | angles | 0.XXX ±0.10 | MM | |
| | | | | dr | STEVEN WANG 01/13/06 | product family | PwrBlade |
| | | | | eng | STEVEN WANG 01/13/06 | size | 213 |
| | | | | chr | BEER FU 01/13/06 | scale | 3 |
| | | | | appd | JOSEPH HSIA 01/13/06 | A | 51710-018 |
| sheet index | revision sheet | | | | | | |

3P + 12S + 3P
VERTICAL PF HEADER
code 213
sheet 3
cage code 22526

Tous droits strictement réservés. Reproduction ou communication à des tiers interdite sous quelque forme que ce soit sans autorisation écrite du propriétaire. Propriété de c.FCI. Droits de reproduction FCI.



All rights strictly reserved. Reproduction or issue to third parties in any form, whatever is not permitted without written authority from the proprietor. Property of FCI. Copyright FCI.

PRODUCT NUMBER
51710-018
NOTE: 3

NOTES:

1. DIMENSIONS AND TOLERANCES ARE IN ACCORDANCE WITH ASME Y14.5M, 1994 UNLESS OTHERWISE SPECIFIED.

CONNECTOR NOTES:

- 2 HOUSING MATERIAL: UL 94 V-0 GLASS FILLED HIGH-TEMP THERMOPLASTIC
POWER CONTACT MATERIAL: COPPER ALLOY
SIGNAL PIN MATERIAL: COPPER ALLOY
 - 3. PLATING:
SEE ITEM 3 & 4 IN PRINT 10064183 FOR PLATING SPEC OF 51710-018; 51710-018LF PRESPECTIVELY
 - 4 MANUFACTURER'S NAME, P/N, AND DATE CODE TO APPEAR ON THIS SURFACE.
 - 5. PRODUCT SPECIFICATION GS-12-149.
APPLICATION SPECIFICATION BUS-20-067.
 - 6. PACKAGED IN TRAYS.
- PCB NOTES:
- 7. ALL HOLE DIAMETERS ARE FINISHED HOLE SIZE.
 - 8. MOUNTING HOLES, WHERE APPLICABLE, ARE UNPLATED.
 - 9 $\varnothing 1.151 \pm 0.025$ DRILLED HOLES PLATED WITH 0.008 MIN SnPb OR Sn OVER 0.03 TO 0.08 Cu PLATING TO ACHIEVE $\varnothing 1.02 \pm .07$ HOLE.
 - 10 "DIM XXX" TO BE DETERMINED BY THE CUSTOMER.
 - 11 CONNECTOR KEEP-OUT ZONE.
 - 12. FOR PRESS FIT APPLICATION USE FCI CAM TOOL 430169-XXX.
 - 13. A Δ SYMBOL WILL BE NEXT TO ANY DIMENSION, VIEW, OR NOTE WHICH HAS BEEN MODIFIED WITH THE CURRENT DRAWING REVISION.

| mat'l code | | SEE NOTE | | tolerances unless otherwise specified | | CUSTOMER | |
|-------------|----------------|----------|------|---------------------------------------|--------|--------------------------|--|
| ltr | ecm no. | dr | date | linear | angles | projection | title |
| C | | | | 0.X ±0.5 | 0° ±2° | | www.fciconnect.com 3P + 12S + 3P VERTICAL PF HEADER |
| | | | | 0.XXX ±0.25 | | | |
| | | | | 0.XXX ±0.10 | | | product family PwrBlade size dwg no 213 code sheet 4 |
| | | | | dr STEVEN WANG 01/13/06 | | | |
| | | | | eng STEVEN WANG 01/13/06 | | scale 1:1 A 51710-018 | cage code 22526 |
| | | | | chr BEER FU 01/13/06 | | | |
| | | | | appd JOSEPH HSIA 01/13/06 | | | |
| sheet index | revision sheet | | | | | | |